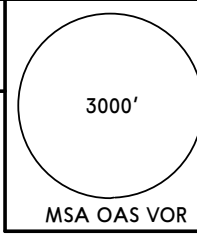
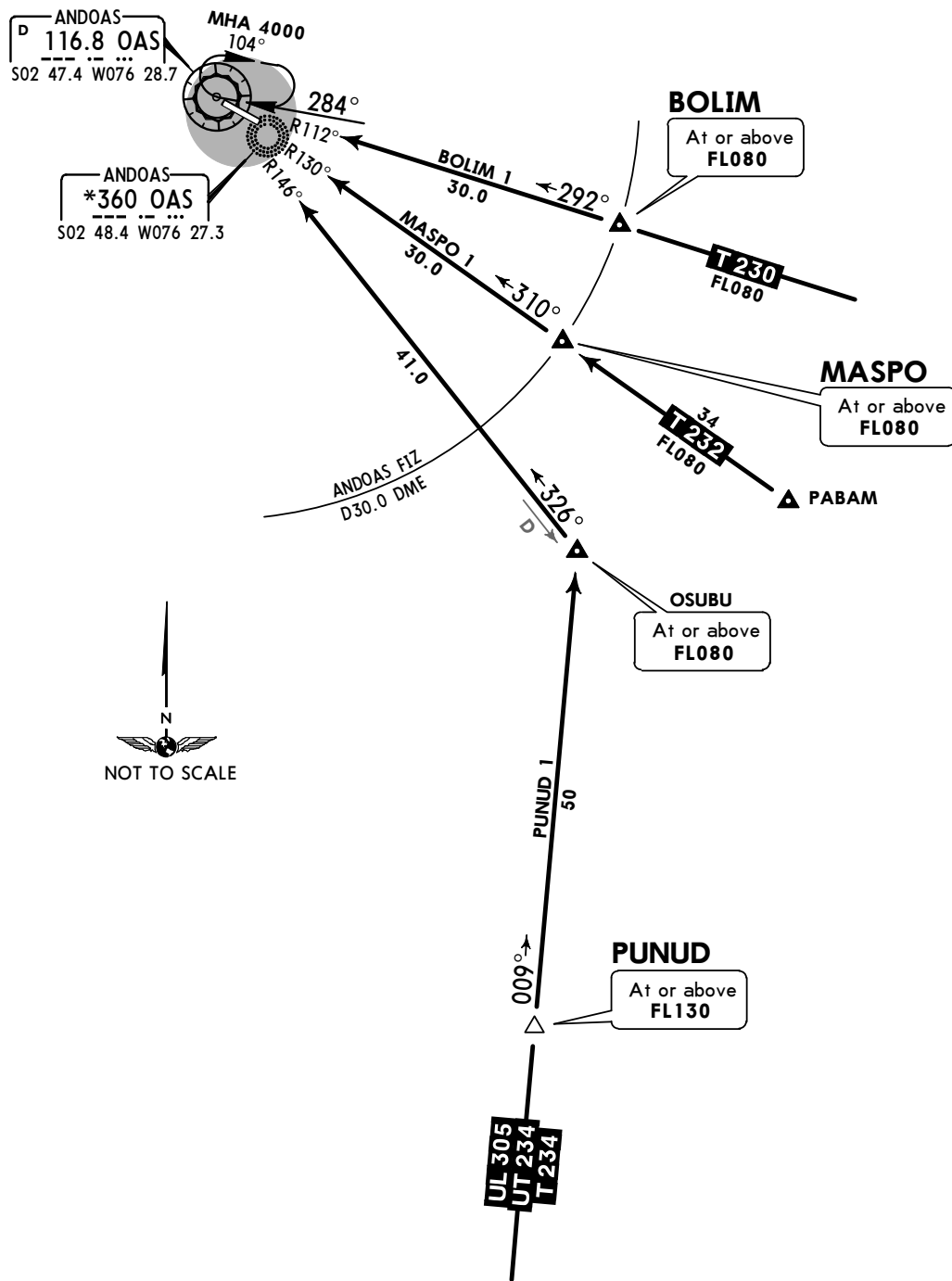


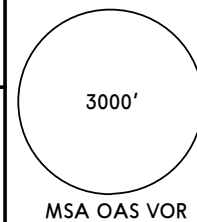
*ANDOAS Radio (FIS/AFIS) 118.2	Apt Elev 728'	Alt Set: hPa Trans level: By ATC Trans alt: 10000' DME required.	 <p>3000' MSA OAS VOR</p>
--	-------------------------	---	--

**BOLIM 1 [BOLIM1], MASPO 1 [MASPO1]
PUNUD 1 [PUNUD1] ARRIVALS
(RWY 12)**

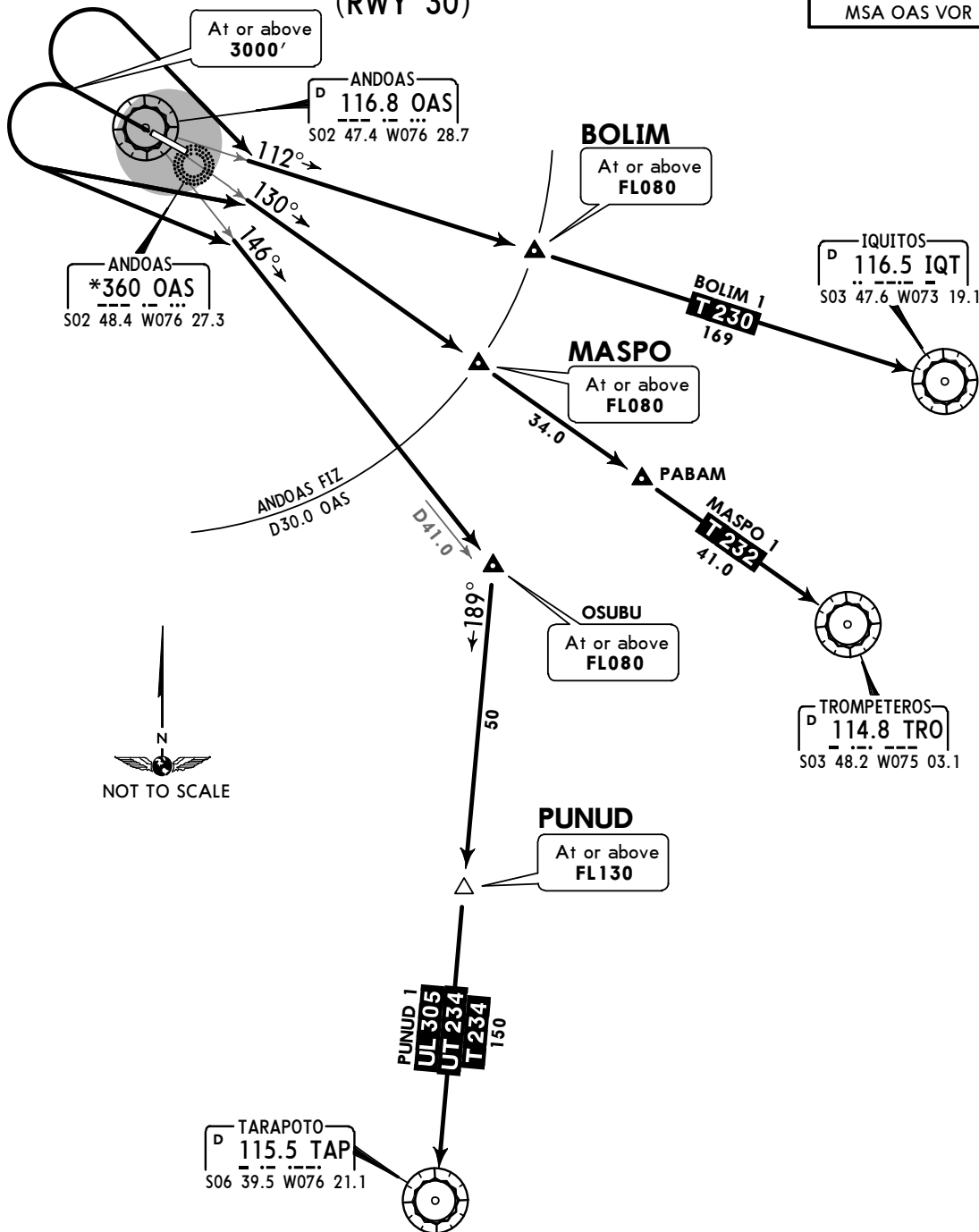


STAR	ROUTING
BOLIM 1	Descend from T-230 to BOLIM, continue descent on OAS R-112 (heading 292°) to OAS in accordance with Andoas AFIS.
MASPO 1	Descend from T-232 to MASPO, continue descent on OAS R-130 (heading 310°) to OAS in accordance with Andoas AFIS.
PUNUD 1	Descend from T-234/UT-234/UL-305 to PUNUD, continue to OSUBU, turn LEFT onto OAS R-146 (heading 326°) to OAS and continue descent in accordance with Andoas AFIS.

Apt Elev 728' Trans level: By ATC Trans alt: 10000'
DME required.



**BOLIM 1 [BOLIM1], MASPO 1 [MASPO1]
PUNUD 1 [PUNUD1] DEPARTURES
(RWY 30)**

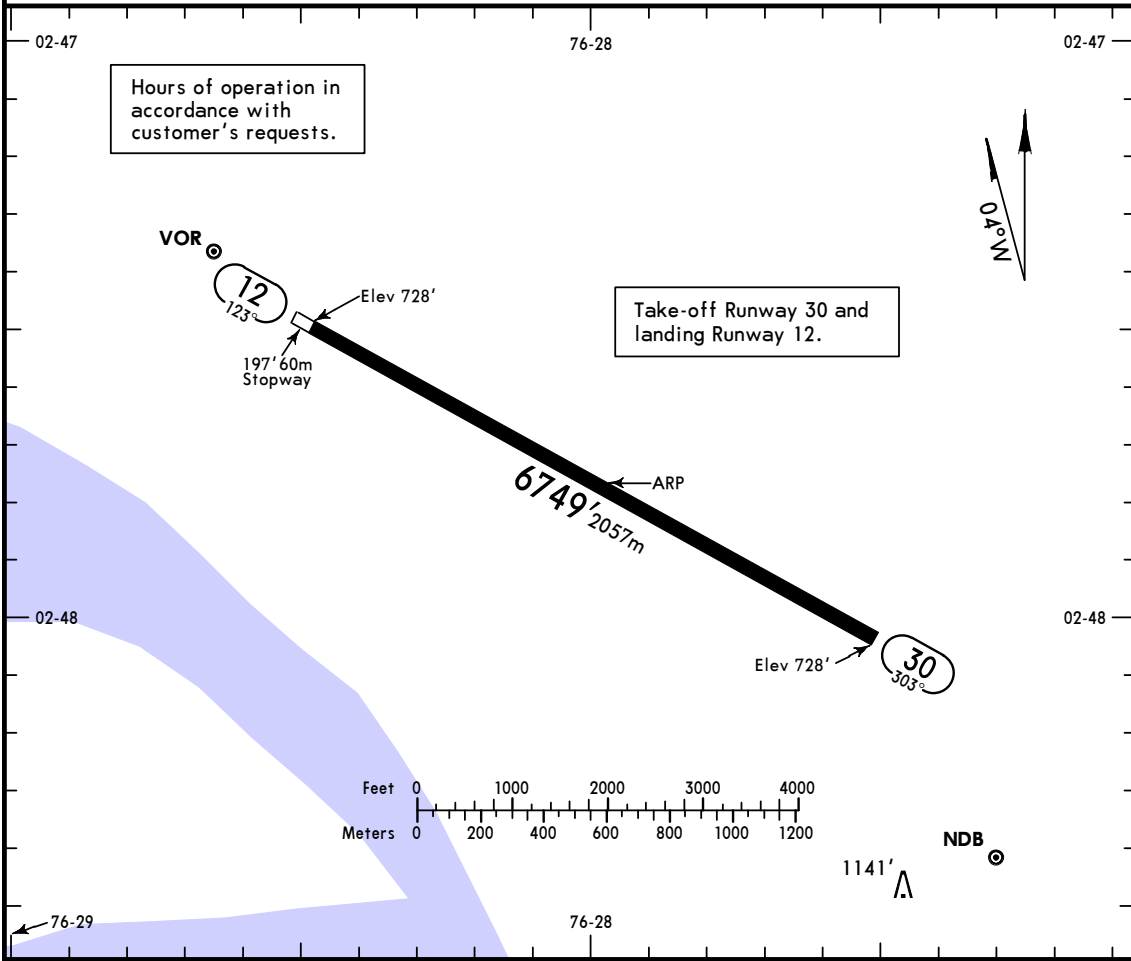


INITIAL CLIMB

Take-off runway 30. MAINTAIN runway heading to 3000'.

SID	ROUTING
BOLIM 1	Turn RIGHT to intercept OAS R-112 (heading 112°). Continue climbing to BOLIM. Proceed on T-230 to IQT VOR.
MASPO 1	Turn LEFT to intercept OAS R-130 (heading 130°). Continue climbing to MASPO. Proceed on T-232 to TRO VOR.
PUNUD 1	Turn LEFT to intercept OAS R-146 (heading 146°). Continue climbing to OSUBU. Turn RIGHT to 189° course to PUNUD. Proceed on T-234/UT-234/UL-305 to TAP VOR.

*ANDOAS Radio (FIS/AFIS) 118.2



ADDITIONAL RUNWAY INFORMATION

RWY		USABLE LENGTHS		TAKE-OFF	WIDTH
		LANDING Threshold	BEYOND Glide Slope		
12	RL ALS PAPI (angle 3.0°)				148'
30	RL				45m

TAKE-OFF

All Rwy's

	Take-Off Alternate Apt. Filed	Take-Off Alternate Apt. Not Filed
1 Eng	1600m or Higher Available Landing Minimums	
2 Eng	1 hr alternate (1 Eng Inop) 1600m	Available Landing Minimums
3 or more Eng	2 hr alternate (1 Eng Inop) 800m	

SPAS

JEPPESEN

ANDOAS, PERU

ALFREDO VLADIMIR SARA BAUER

2 DEC 16

Eff 8 Dec

13-1

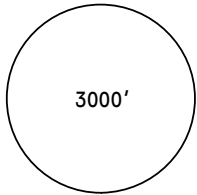
CAT A, B & C

VOR Rwy 12

*ANDOAS Radio (FIS/AFIS) 118.2

BRIEFING STRIP™

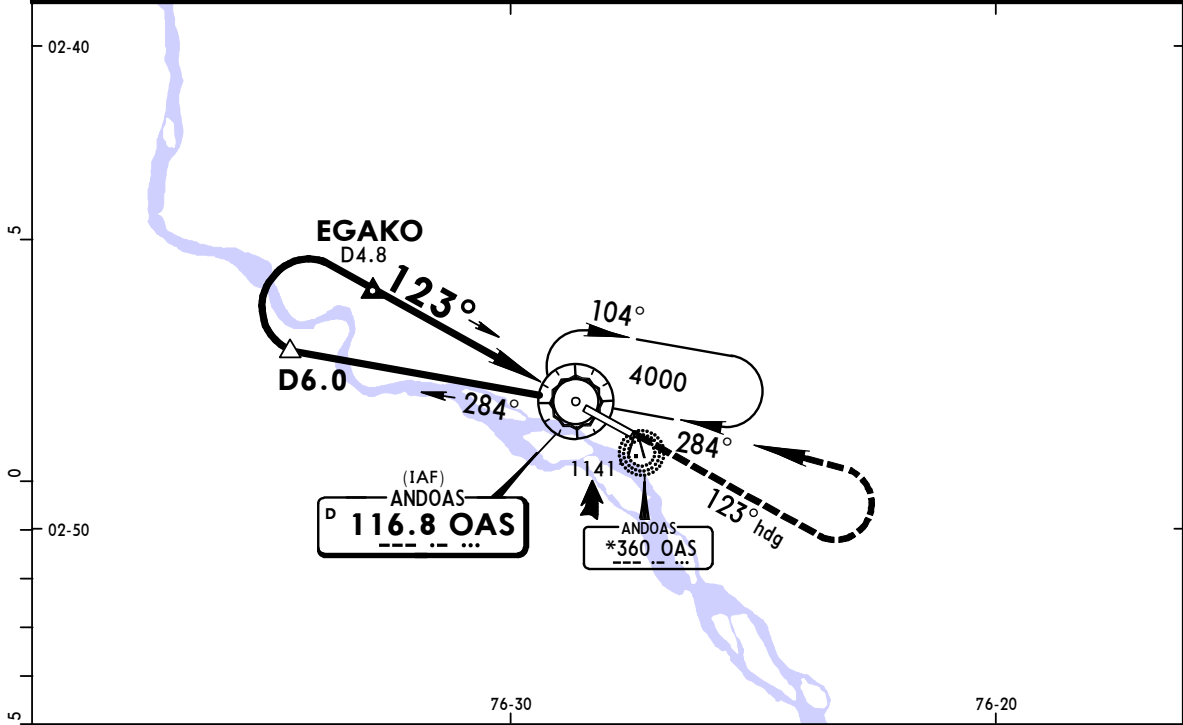
VOR OAS 116.8	Final Apch Crs 123°	Minimum Alt EGAKO 2400' (1672')	MDA(H) 1400' (672')	Apt Elev 728' Rwy 728'
-------------------------	-------------------------------	--	-------------------------------	---------------------------



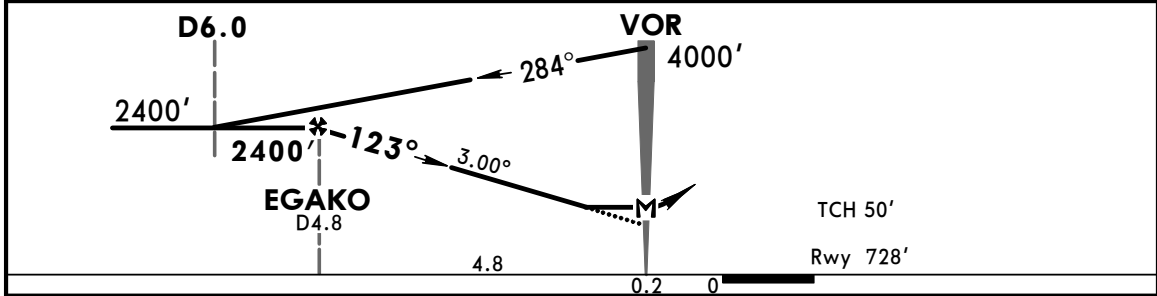
MISSED APCH: Climb on 123° heading to 4000' and proceed to OAS VOR and hold.

Alt Set: hPa Rwy Elev: 26 hPa Trans level: By ATC Trans Alt: 10000'
 1. DME required. 2. CAUTION: Antenna southeast of airport 1141'. 3. Prohibited to land on Runway 30.

MSA OAS VOR



OAS DME	5.0	4.0	3.0	2.0
ALTITUDE	2470'	2150'	1830'	1510'



Gnd speed-Kts	70	90	100	120	140	160	ALS PAPI	4000' ↑ on 123° hdg
Descent Angle	3.00°	372	478	531	637	743		

STRAIGHT-IN LANDING RWY 12		CIRCLE-TO-LAND	
MDA(H) 1400' (672')			
ALS out			

PANS OPS

A	2.8 km	A	NOT AUTHORIZED
B		B	
C	3.6 km	C	
D	NOT APPLICABLE	D	

CHANGES: Airport name.

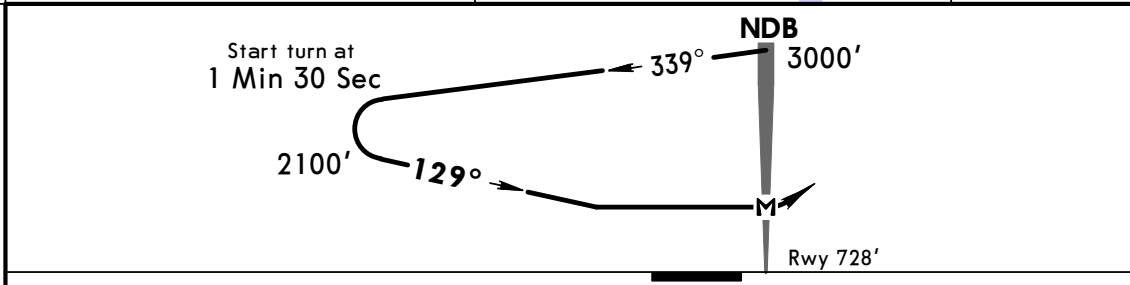
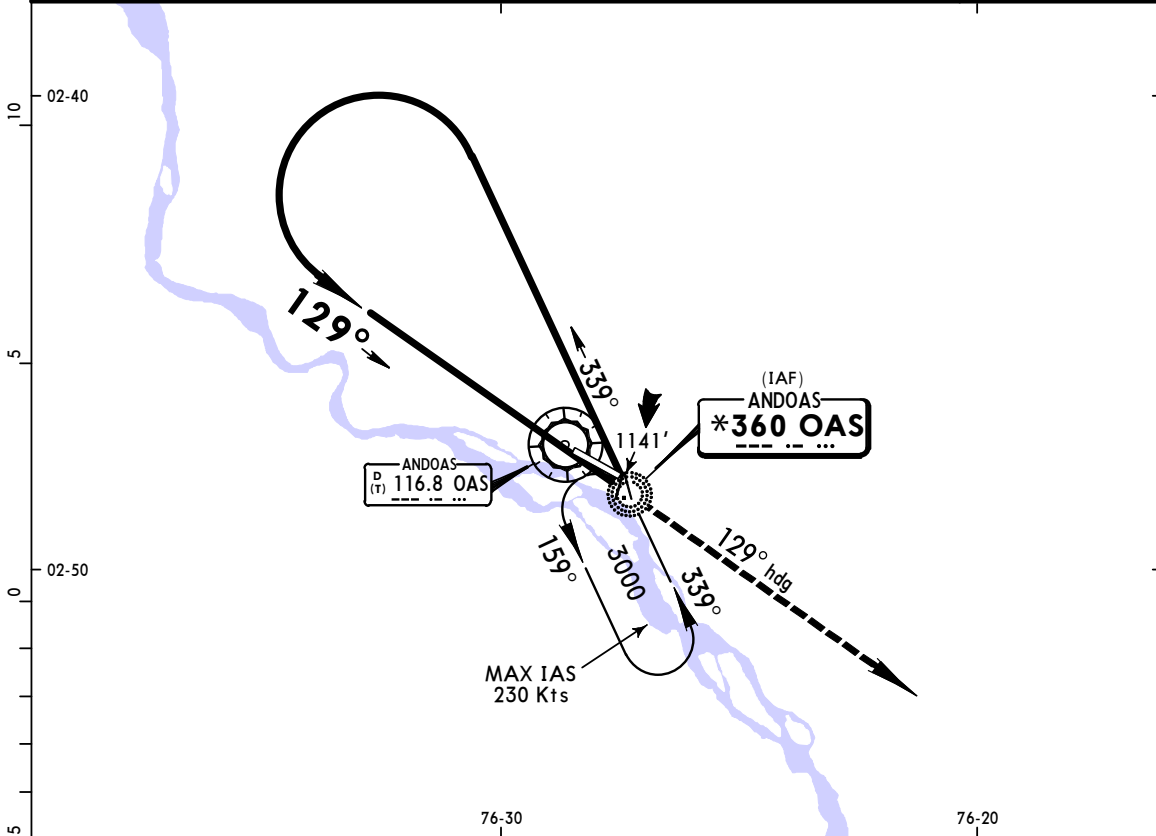
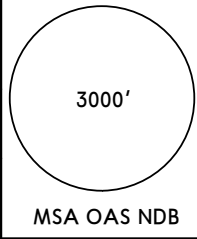
© JEPPESEN, 2010, 2016. ALL RIGHTS RESERVED.

CAT C

*ANDOAS Radio (FIS/AFIS) 118.2

BRIEFING STRIP™

NDB OAS *360	Final Apch Crs 129°	No FAF	MDA(H) 1450' (722')	Apt Elev 728' Rwy 728'
MISSED APCH: Climb on 129° heading to 3000' and proceed to OAS NDB and hold.				
Alt Set: hPa Rwy Elev: 26 hPa Trans level: By ATC Trans Alt: 10000' 1. CAUTION: Antenna southeast of airport 1141'. 2. Prohibited to land on Runway 30. 3. Max IAS base turn: 180 Kts.				



MAP at NDB	ALS PAPI	3000' on	129° hdg
------------	----------	----------	----------

STRAIGHT-IN LANDING RWY 12	CIRCLE-TO-LAND
MDA(H) 1450' (722')	
ALS out	

PANS OPS

A	NOT APPLICABLE	A	
B		B	
C	3.5 km	C	NOT AUTHORIZED
D	NOT APPLICABLE	D	

SPAS

ALFREDO VLADIMIR SARA BAUER

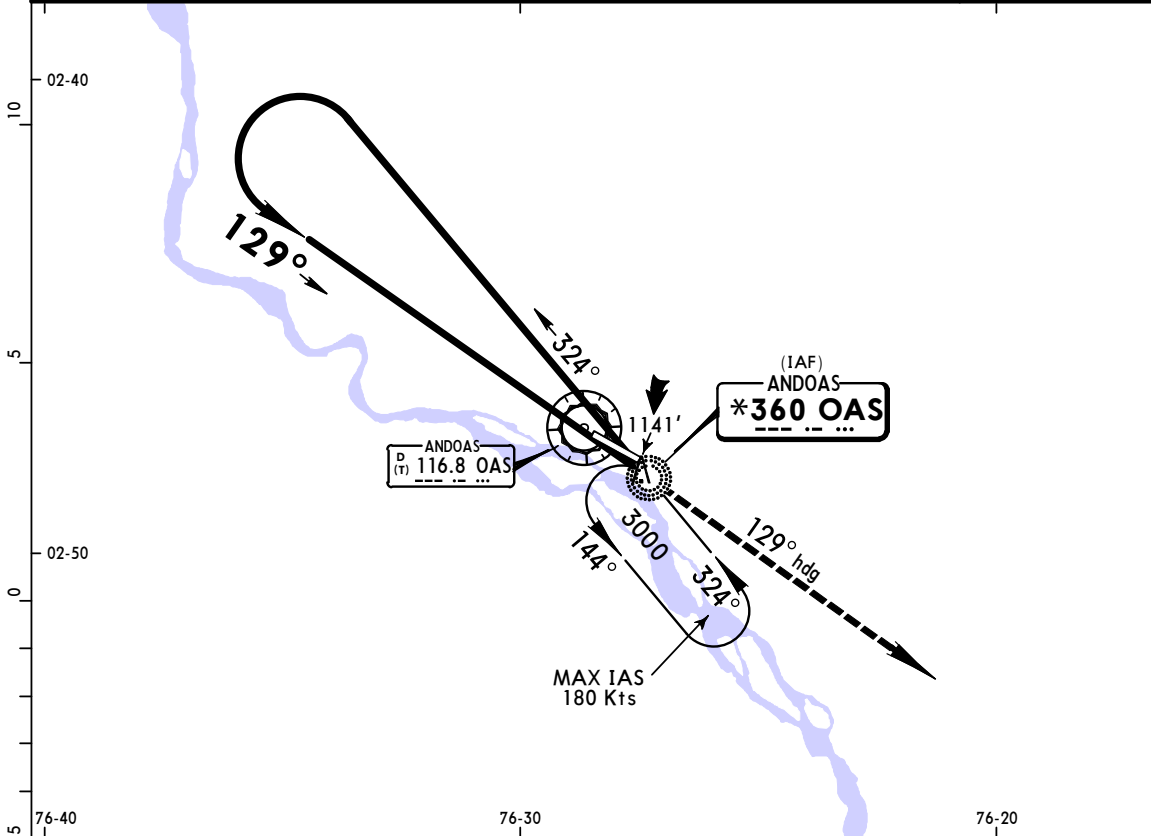
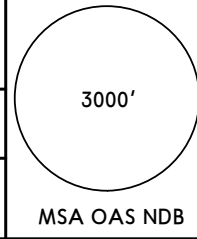
JEPPESEN
2 DEC 16
Eff 8 Dec (16-2)

ANDOAS, PERU
CAT A & B NDB Rwy 12

*ANDOAS Radio (FIS/AFIS) 118.2

BRIEFING STRIP™

NDB OAS *360	Final Apch Crs 129°	No FAF	MDA(H) 1450' (722')	Apt Elev 728' Rwy 728'
MISSED APCH: Climb on 129° heading to 3000' and proceed to OAS NDB and hold.				
Alt Set: hPa Rwy Elev: 26 hPa Trans level: By ATC Trans Alt: 10000'				
1. CAUTION: Antenna southeast of airport 1141'. 2. Prohibited to land on Runway 30. 3. Max IAS base turn: 150 Kts.				



Start turn at 2 Min 30 Sec

2100'

129°

324°

NDB 3000'

M

Rwy 728'

MAP at NDB	ALS PAPI	3000' on 129° hdg
------------	----------	-------------------

STRAIGHT-IN LANDING RWY 12	CIRCLE-TO-LAND
MDA(H) 1450' (722')	
ALS out	

PANS OPS

A	3.5 km	A	NOT AUTHORIZED
B		B	
C	NOT APPLICABLE	C	
D		D	