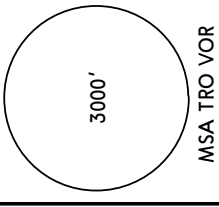
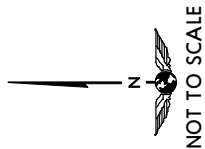
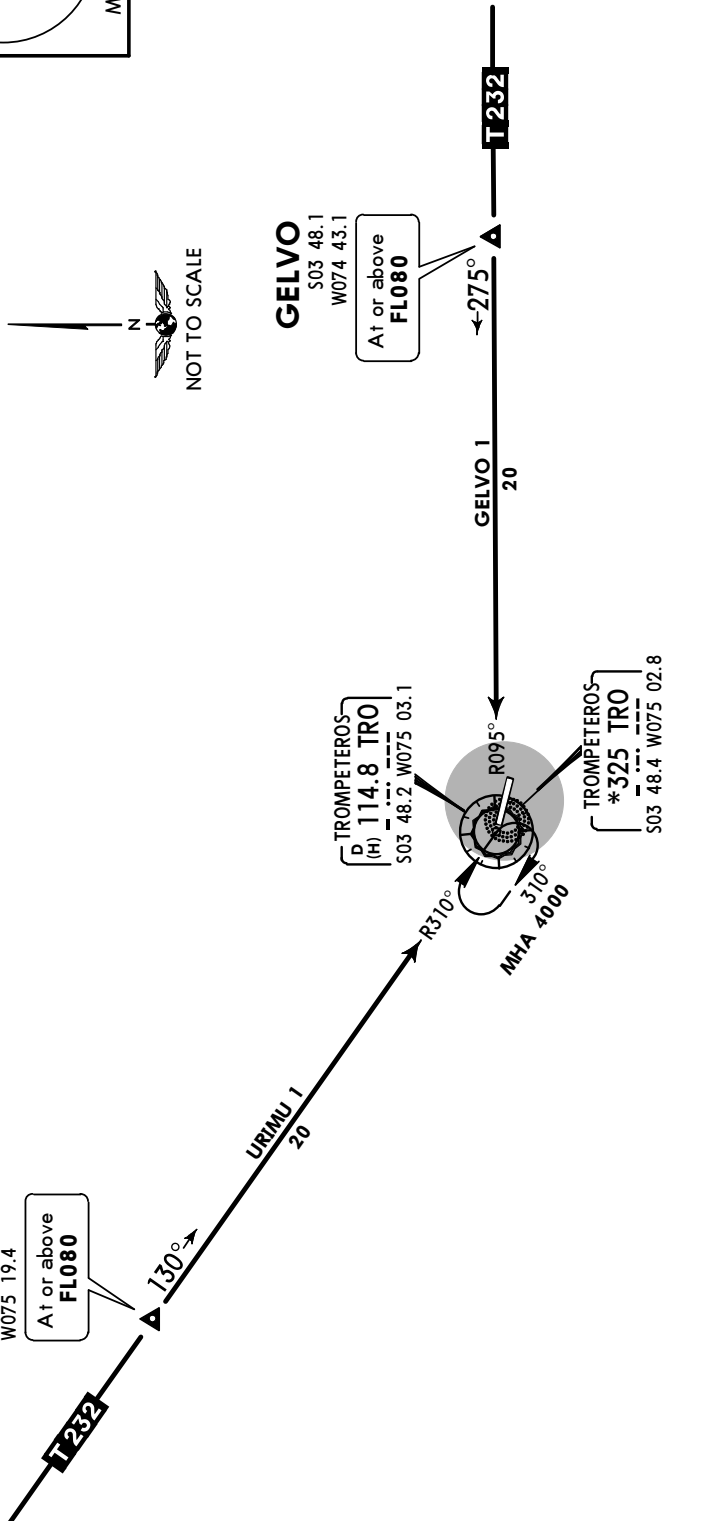


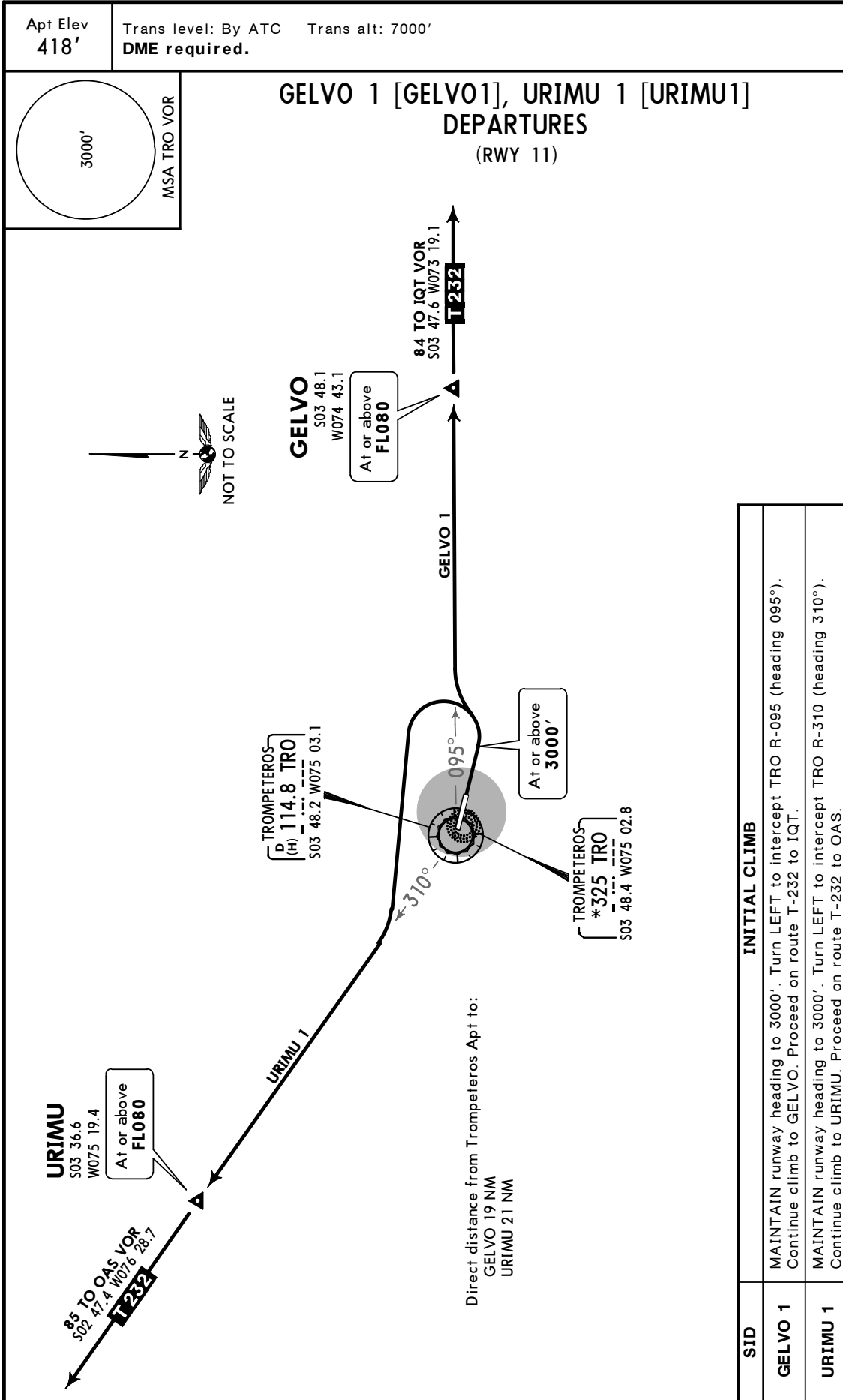
Apt Elev 418' Alt Set: hPa Trans level: By ATC Trans alt: 7000'
DME required.

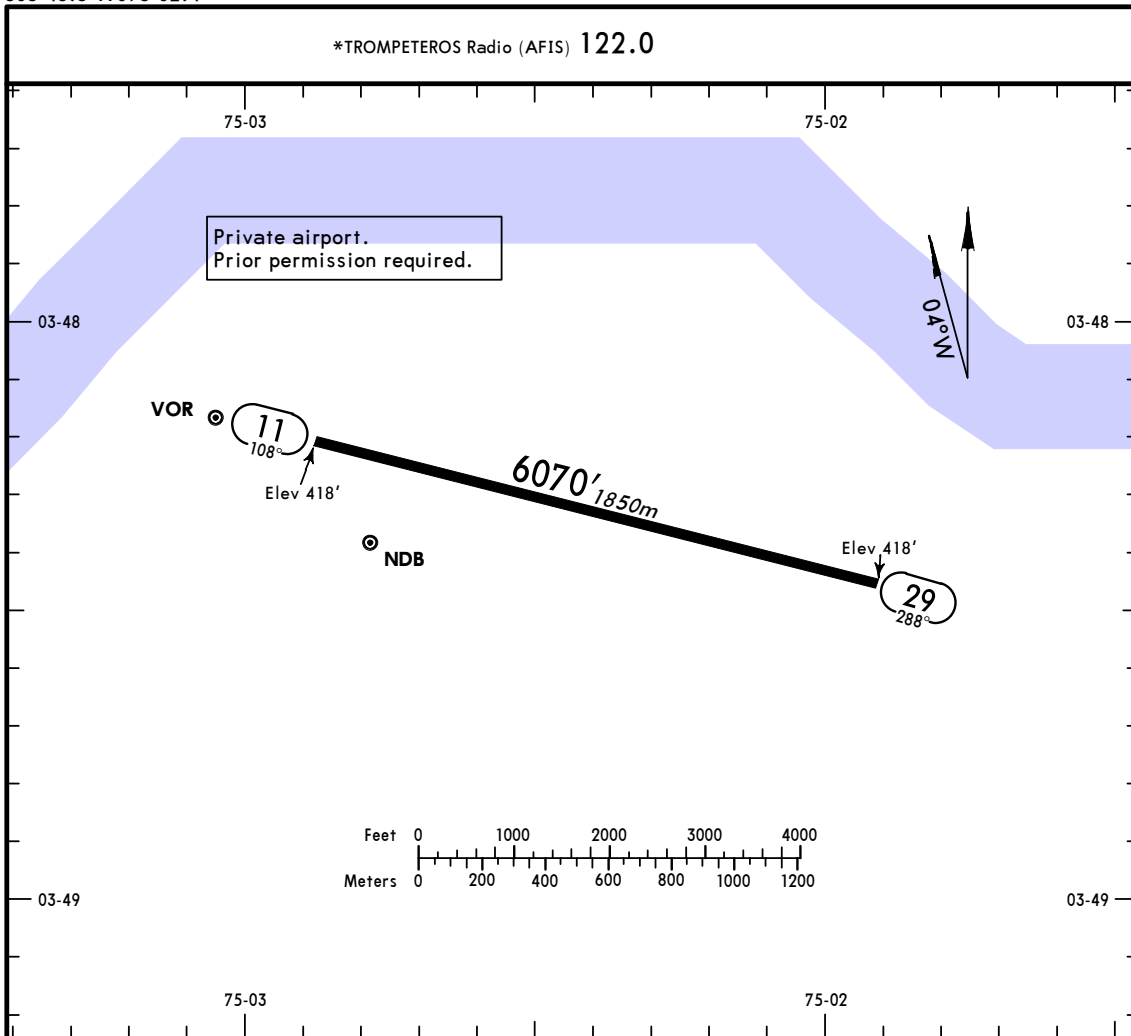


GELVO 1 [GELVO1], URIMU 1 [URIMU1]
ARRIVALS
(RWY 29)



ROUTING	
STAR	
GELVO 1	From GELVO, continue descent on TRO R-095 (heading 275°) to TRO, then in accordance with Trompeteros AFIS.
URIMU 1	From URIMU, continue descent on TRO R-310 (heading 130°) to TRO, then in accordance with Trompeteros AFIS.





ADDITIONAL RUNWAY INFORMATION

RWY	USABLE LENGTHS		TAKE-OFF	WIDTH
	LANDING Threshold	BEYOND Glide Slope		
11 29				98' 30m

TAKE-OFF

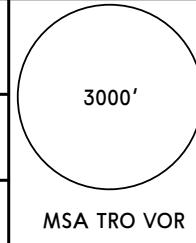
All Rwy's

	Take-Off Alternate Apt. Filed	Take-Off Alternate Apt. Not Filed
1 Eng	1600m or Higher Available Landing Minimums	
2 Eng	1 hr alternate (1 Eng Inop) 1600m	Available Landing Minimums
3 or more Eng	2 hr alternate (1 Eng Inop) 800m	

*TROMPETEROS Radio (AFIS) 122.0

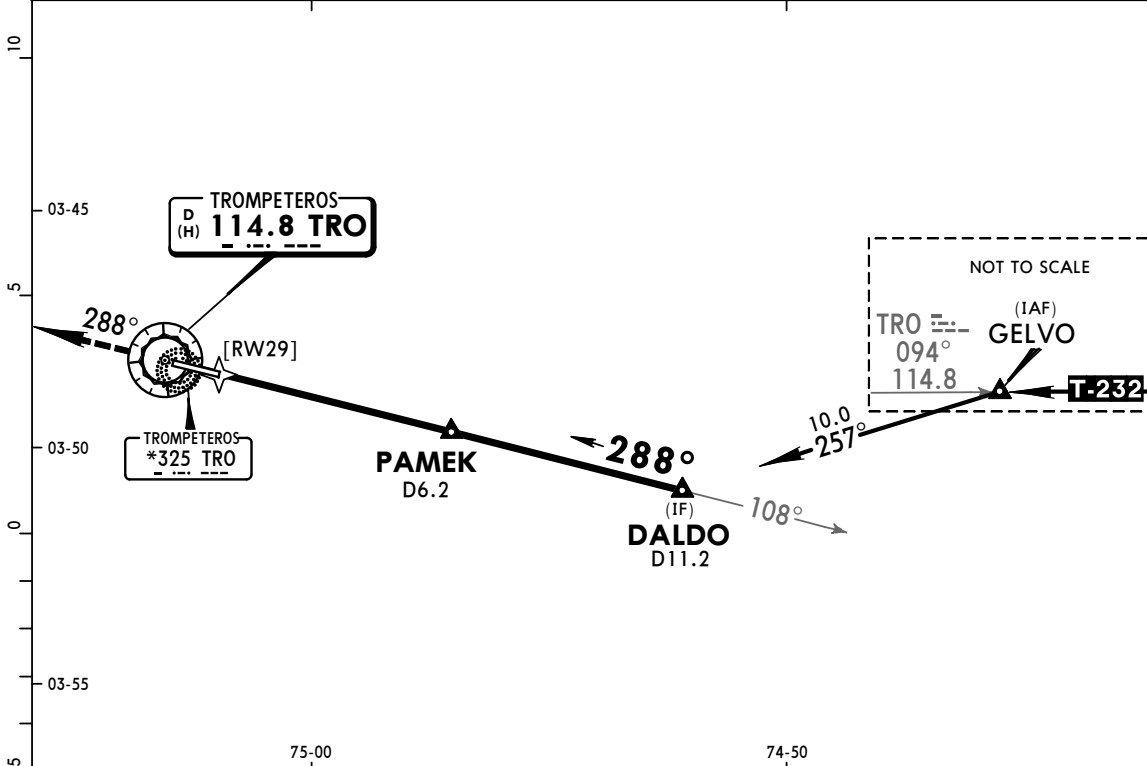
BRIEFING STRIP™

VOR TRO 114.8	Final Apch Crs 288°	Minimum Alt PAMEK 2070' (1652')	MDA(H) 790' (372')	Apt Elev 418' Rwy 418'
----------------------------	----------------------------------	---	------------------------------	---------------------------

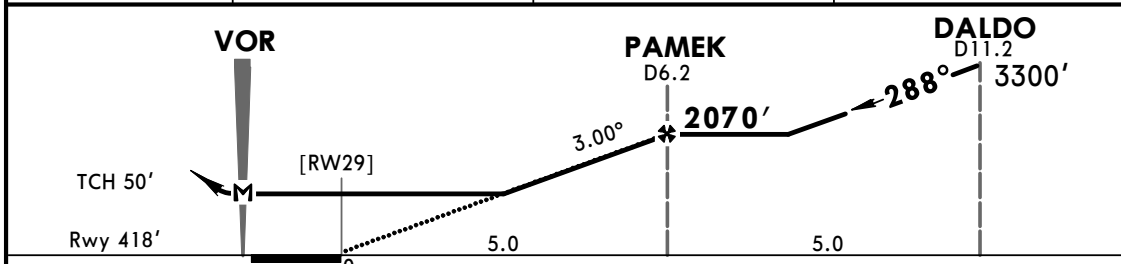


MISSED APCH: Climb outbound on TRO VOR R-288 to 3000', then continue in coordination with AFIS.

Alt Set: hPa Rwy Elev: 15 hPa Trans level: by ATC Trans alt: 7000'
1. DME Required.



TRO DME	3.0	4.0	5.0
ALTITUDE	1060'	1370'	1690'



Gnd speed-Kts	70	90	100	120	140	160	3000' TRO on 114.8 R-288
Descent angle	3.00°	372	478	531	637	743	
MAP at VOR							

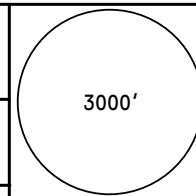
STRAIGHT-IN LANDING RWY29		CIRCLE-TO-LAND	
MDA(H) 790' (372')			

A	2.0 km	A	NOT AUTHORIZED
B			
C			
D		NOT APPLICABLE	

*TROMPETEROS Radio (AFIS) 122.0

BRIEFING STRIP™

VOR TRO 114.8	Final Apch Crs 289°	Minimum Alt PAMEK 2070' (1652')	MDA(H) 790' (372')	Apt Elev 418' Rwy 418'
----------------------------	----------------------------------	--	------------------------------	---------------------------

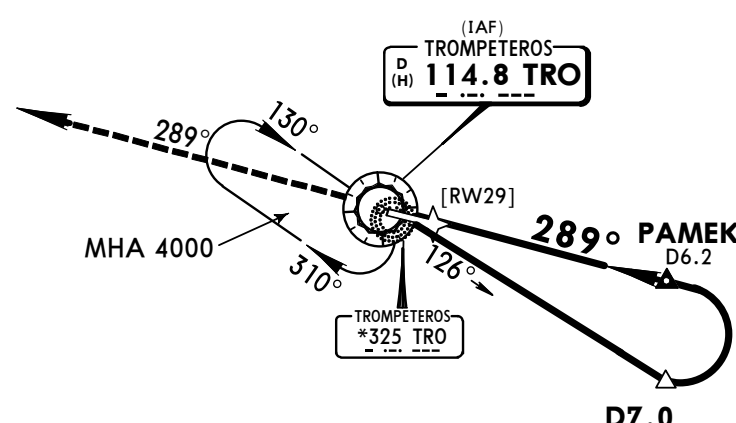


MISSED APCH: Climb outbound on TRO VOR R-288 to 3000', then continue in coordination with AFIS.

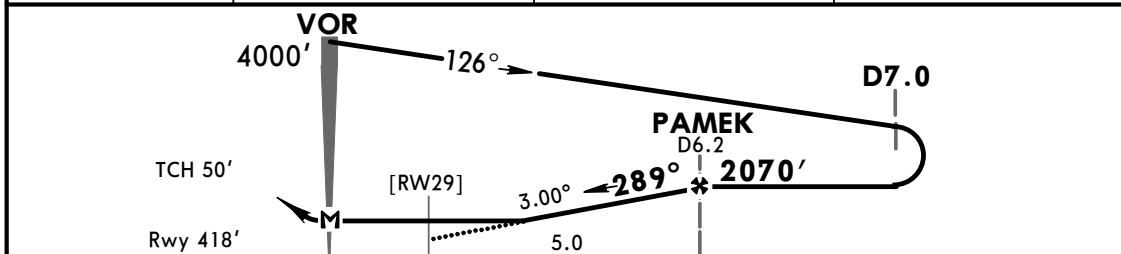
Alt Set: hPa Rwy Elev: 15 hPa Trans level: by ATC Trans alt: 7000'
1. DME Required.

MSA TRO VOR

10
03-45
5
03-50
0
03-55
5



TRO DME	3.0	4.0	5.0
ALTITUDE	1060'	1370'	1690'



Gnd speed-Kts	70	90	100	120	140	160	3000' TRO on 114.8 R-288	
Descent angle	3.00°	372	478	531	637	743		849
MAP at VOR								

STRAIGHT-IN LANDING RWY29		CIRCLE-TO-LAND	
MDA(H) 790' (372')			

A	2.0 km	A	NOT AUTHORIZED
B		B	
C		C	
D		D	