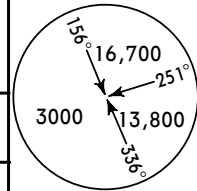


*CHIMBOTE Radio (FIS/AFIS)

118.1

BRIEFING STRIP

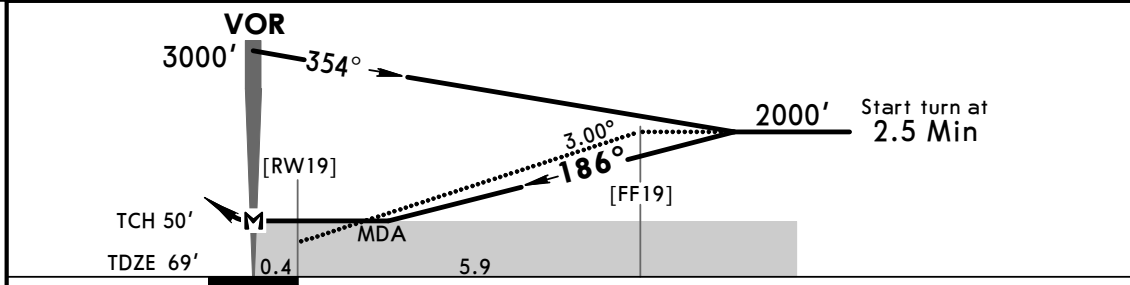
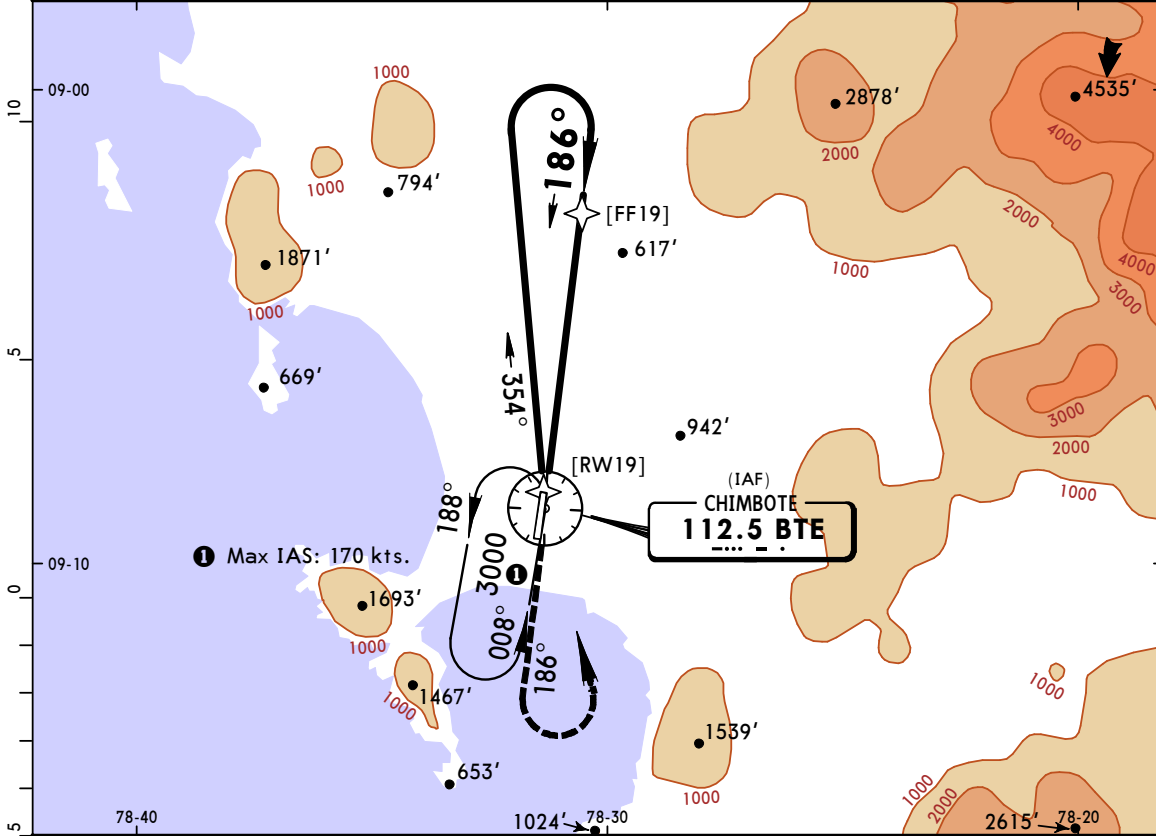
VOR BTE 112.5	Final Apch Crs 186°	No FAF	MDA(H) 1170' (1101')	Apt Elev 69' Rwy 69'
----------------------------	----------------------------------	--------	--------------------------------	-------------------------



MISSED APCH: Climb outbound on BTE VOR R-186 to 2000', then turn LEFT direct BTE VOR to hold.

Alt Set: hPa Rwy Elev: 3 hPa Trans level: By ATC Trans Alt: 4000'
1. Max IAS base turn: 120 kts.

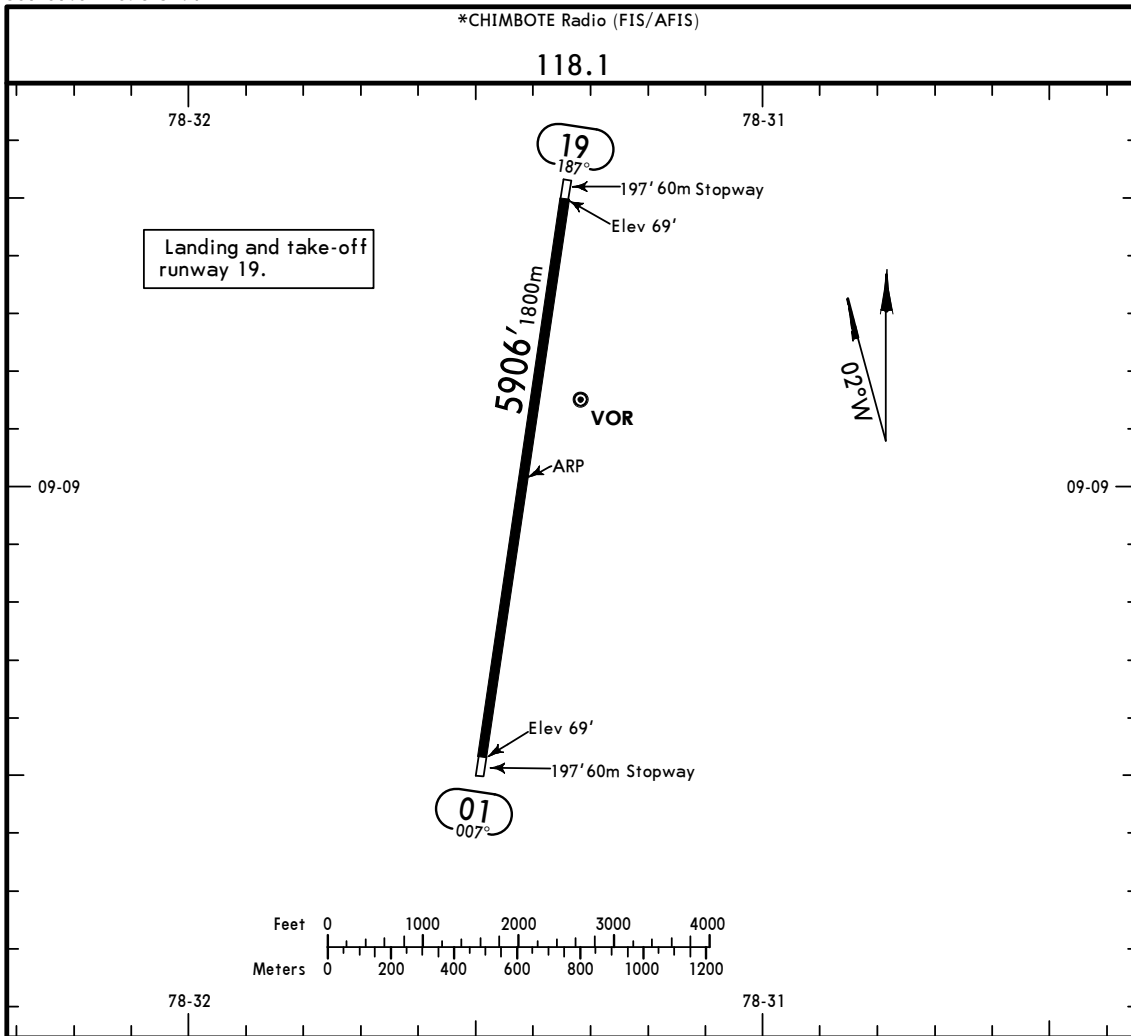
MSA BTE VOR



Gnd speed-Kts	70	90	100	120	140	160	APAPI	2000'	on	BTE 112.5 R-186	D	BTE 112.5
Descent Angle	3.00°	372	478	531	637	849						
MAP at VOR												

STRAIGHT-IN LANDING RWY 19				CIRCLE-TO-LAND			
MDA(H) 1170' (1101')				MDA(H) _____			
A	2.5 km			Max Kts	1250' (1181') - 3 km		
B				100			
C	NOT APPLICABLE			135			
D				C	NOT APPLICABLE		
				D			

PANS OPS



ADDITIONAL RUNWAY INFORMATION

RWY		USABLE LENGTHS		TAKE-OFF	WIDTH
		LANDING Threshold	BEYOND Glide Slope		
01	19 APAPI (angle 3.0°)				98' 30m

TAKE-OFF

All Rwy's	
Take-Off Alternate Apt. Filed	Take-Off Alternate Apt. Not Filed
1 Eng	1600m or Higher Available Landing Minimums
2 Eng	Available Landing Minimums
3 or more Eng	