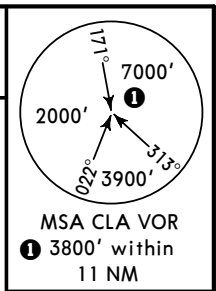
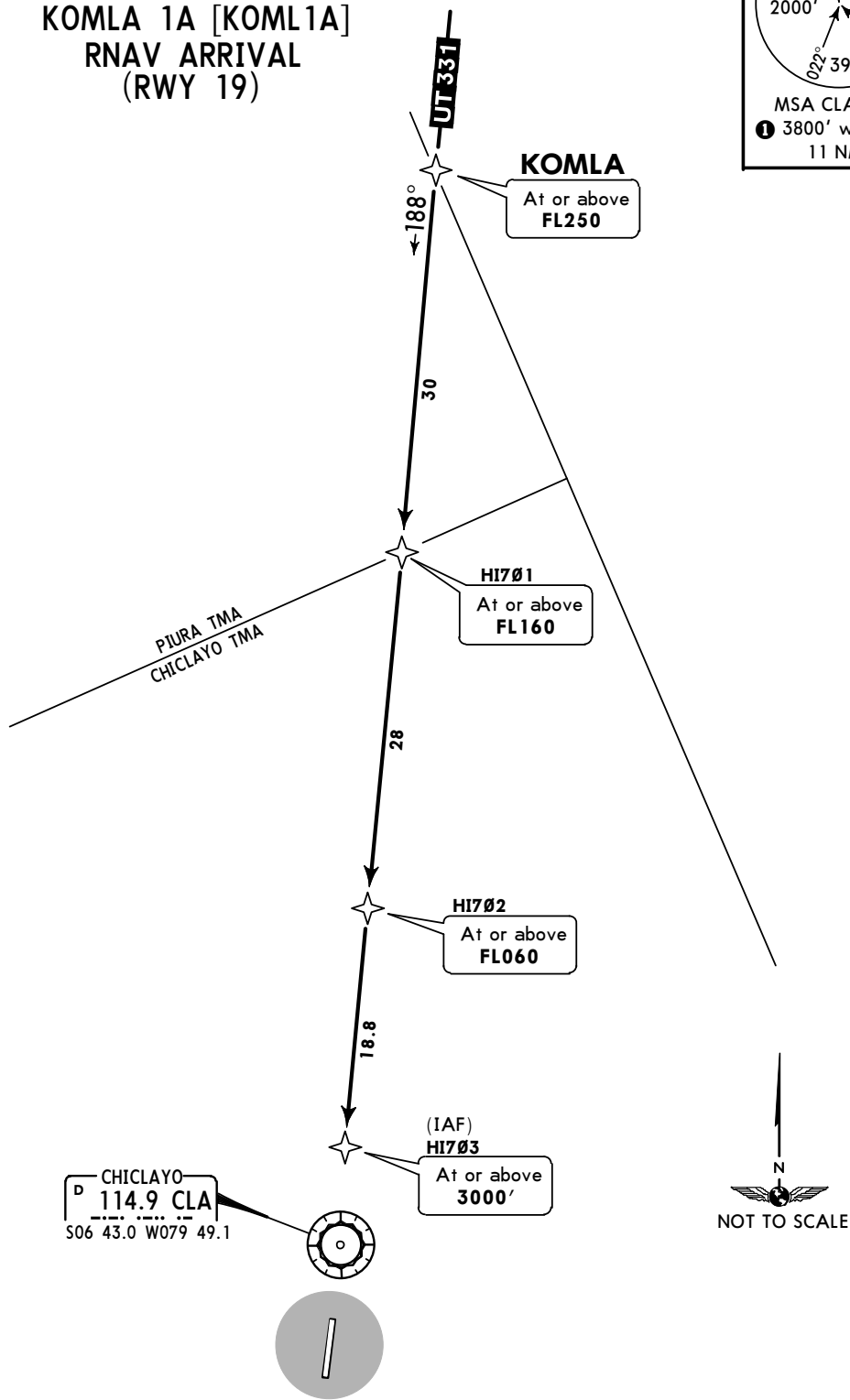


ATIS 132.5	Apt Elev 97'	Alt Set: hPa Trans level: By ATC Trans alt: 3000'
1. GNSS required. 2. RNP 1 approval required.		



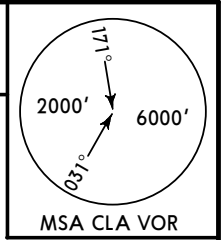
**KOMLA 1A [KOML1A]
 RNAV ARRIVAL
 (RWY 19)**



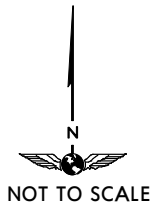
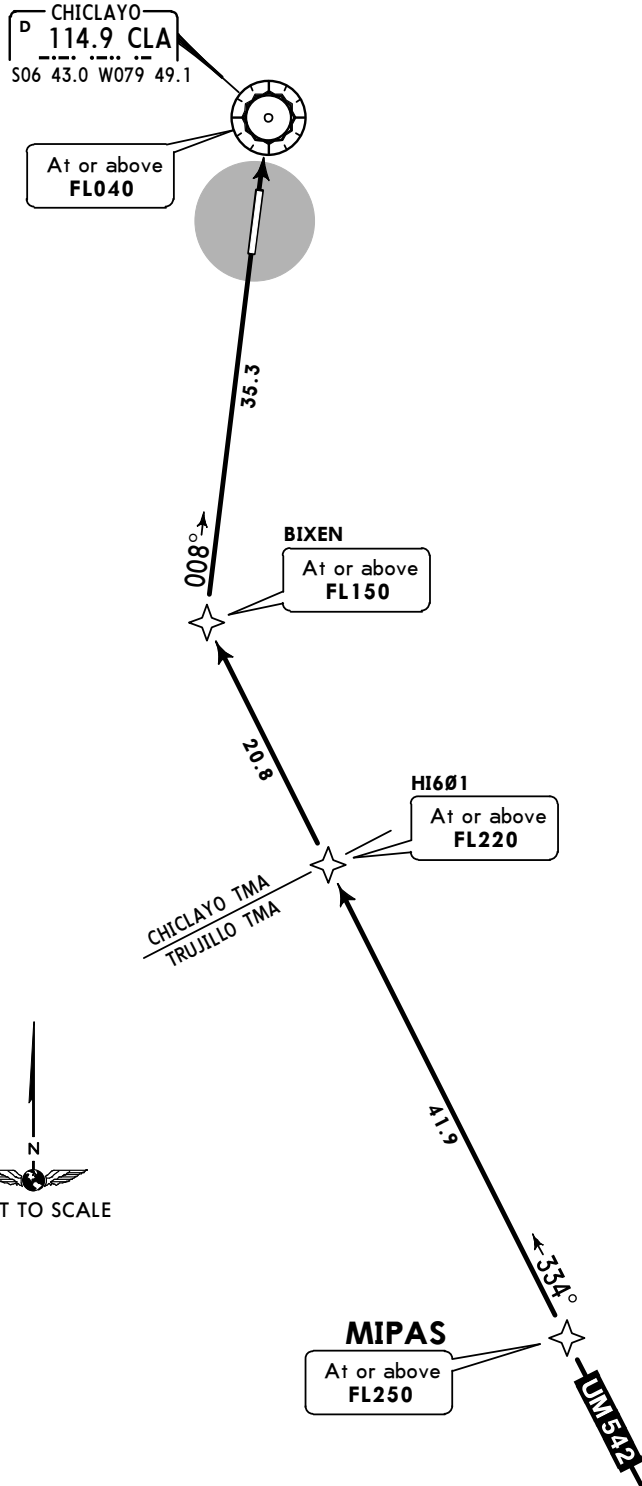
ROUTING

Descend on UT-331 to KOMLA at or above FL250, continue to HI703 (IAF) via HI701, then HI702 according to ATC authorization.

ATIS 132.5	Apt Elev 97'	Alt Set: hPa Trans level: By ATC Trans alt: 3000' 1. GNSS required. 2. RNP 1 approval required.
---------------	-----------------	-------------------------------------------------------------------------------------------------------



MIPAS 1A RNAV (GNSS) ARRIVAL
 [MIPA1A]
 (RWY 19)



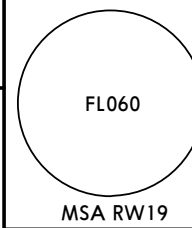
ROUTING

Descend on route UM-542 to cross MIPAS at or above FL250, then continue via BIXEN to CLA VOR according to ATC instructions.

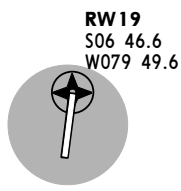
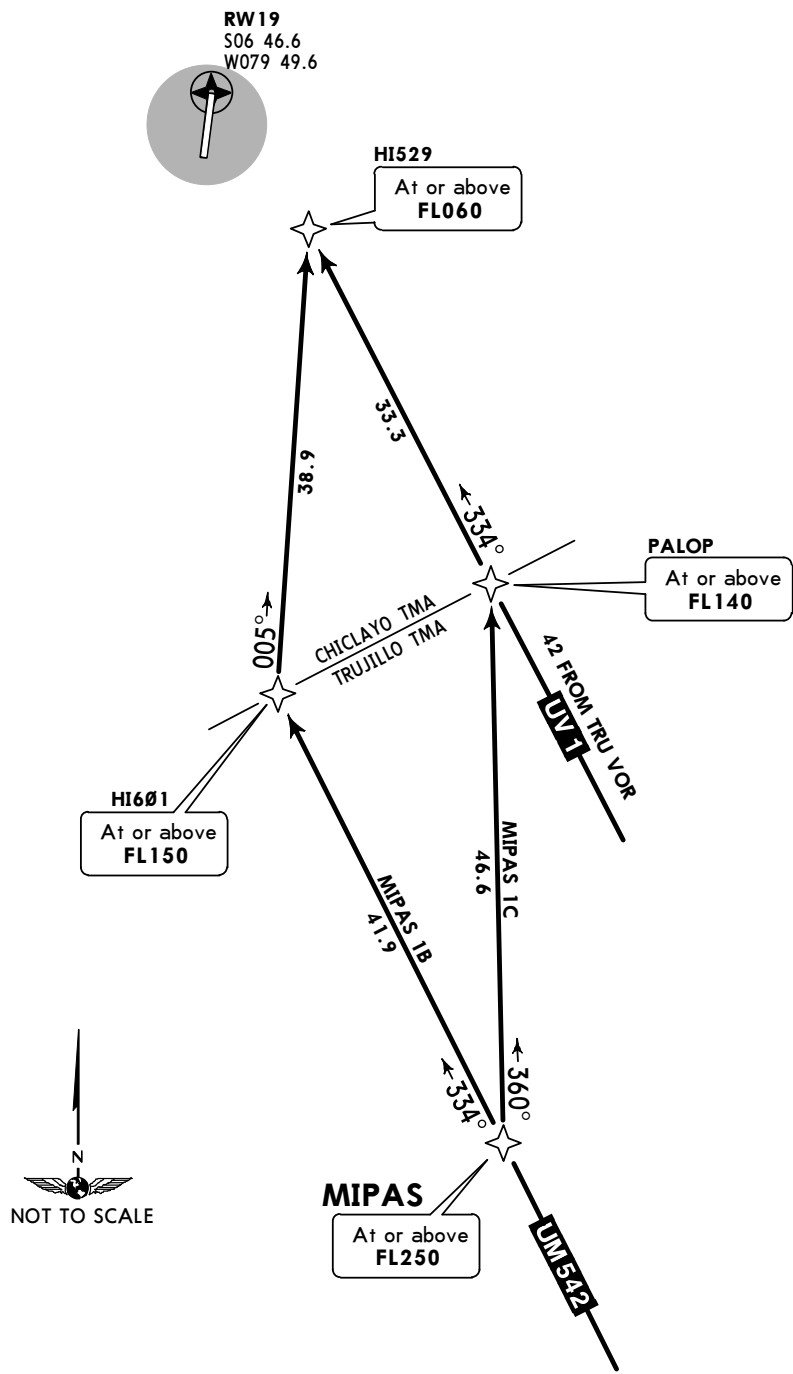
ATIS
 132.5

Apt Elev
 97'

Alt Set: hPa Trans level: By ATC Trans alt: 3000'



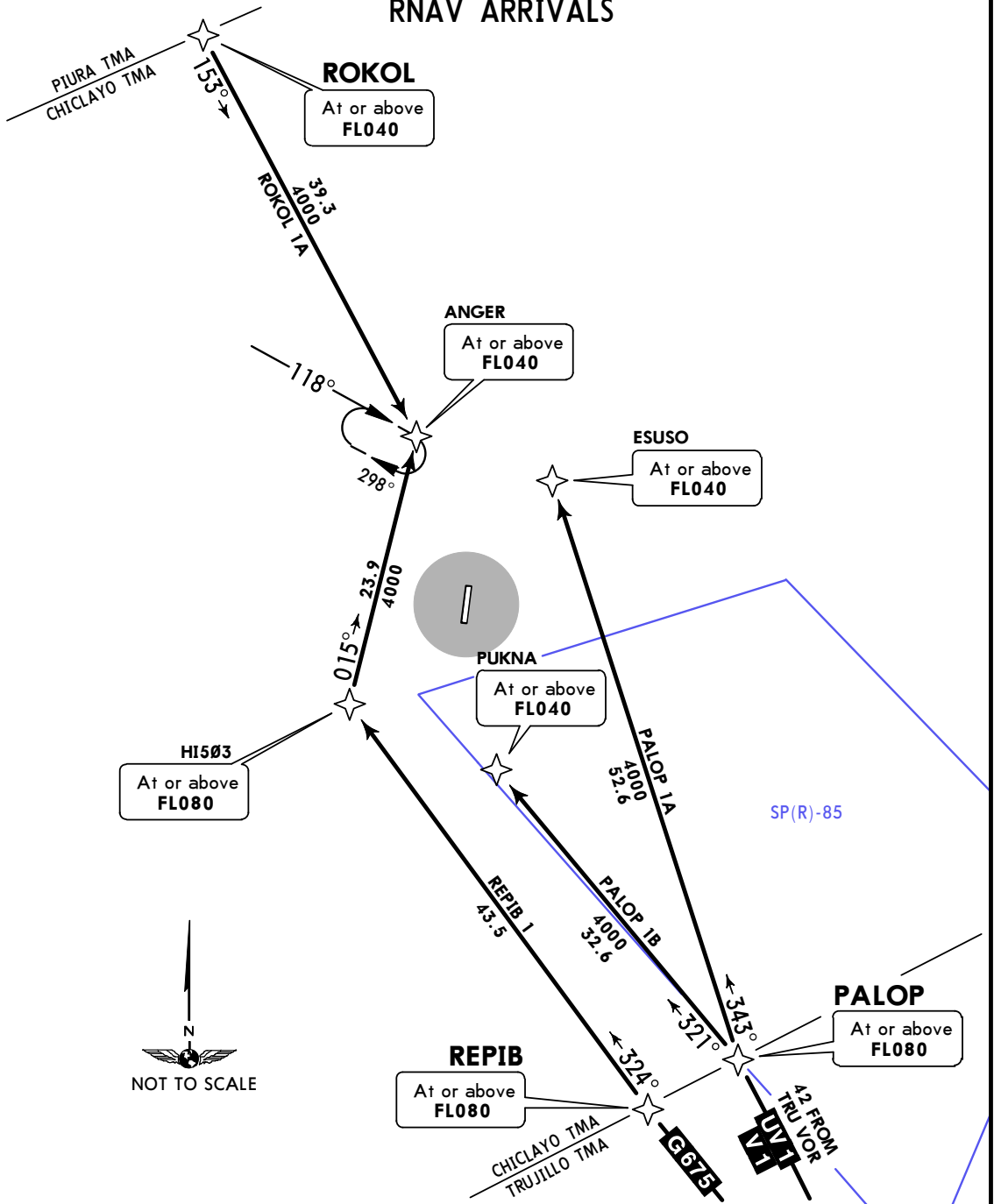
MIPAS 1B [MIPA1B], MIPAS 1C [MIPA1C]
 RNAV ARRIVALS



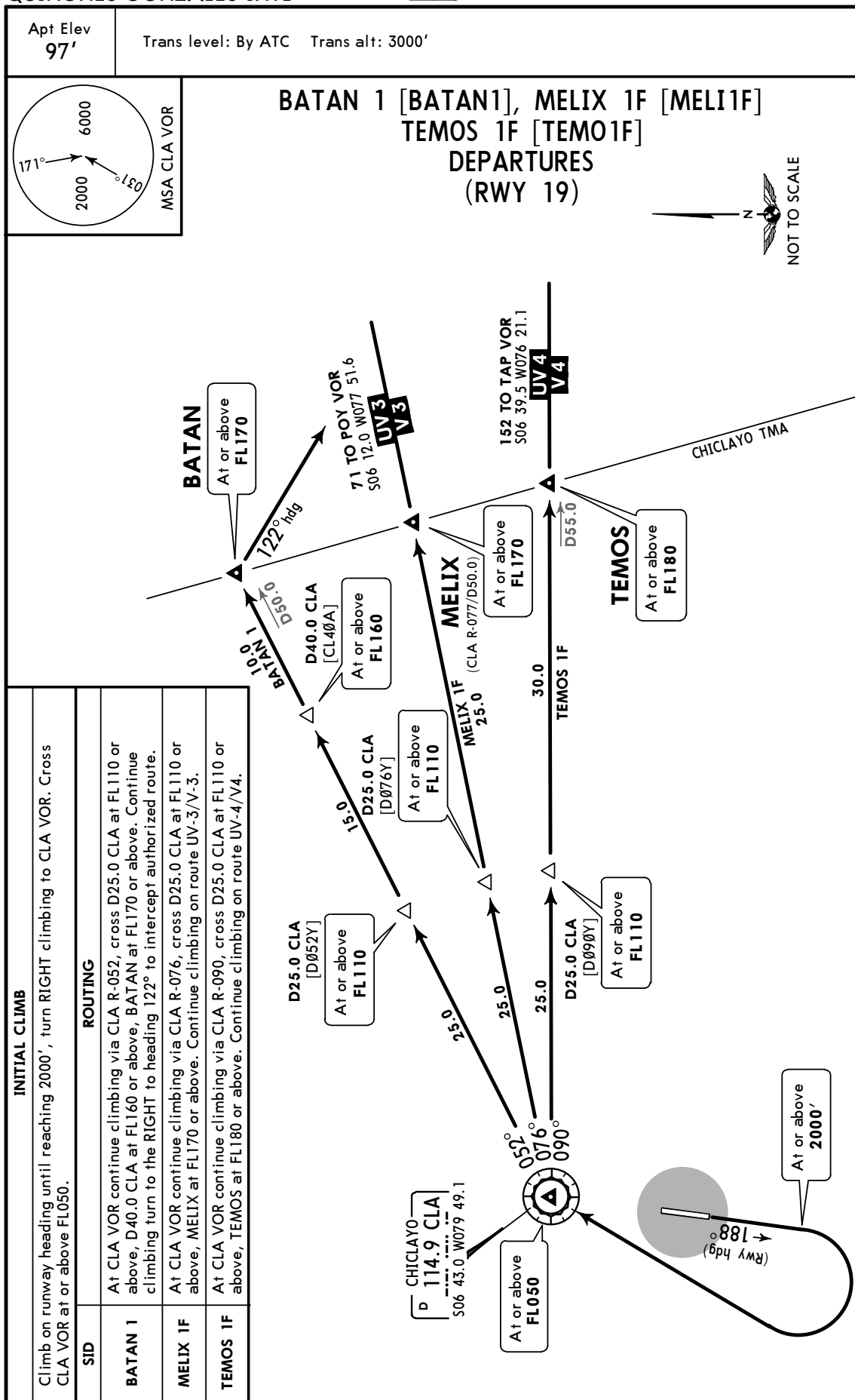
STAR	ROUTING
MIPAS 1B	Descend from route UM-542 to MIPAS, continue to HI601, turn RIGHT to HI529.
MIPAS 1C	Descend from route UM-542 to MIPAS, turn RIGHT to PALOP, turn LEFT to HI529.

ATIS 132.5	Apt Elev 97'	Alt Set: hPa Trans level: By ATC Trans alt: 3000' 1. STAR RNP 1.0. 2. GNSS required. 3. PALOP 1A not applicable when SP(R)-85 is active.
---------------	-----------------	------------------------------------------------------------------------------------------------------------------------------------------------

**PALOP 1A [PALO1A], PALOP 1B [PALO1B]
REPIB 1 [REPIB1], ROKOL 1A [ROK01A]
RNAV ARRIVALS**

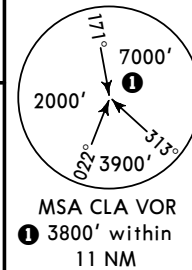


STAR	RWY	ROUTING
PALOP 1A	19	After PALOP at or above FL080, turn RIGHT to continue on track 343° to ESUSO at or above FL040, then according to ATC authorization.
PALOP 1B	01	After PALOP at or above FL080, turn LEFT to track 321° to PUKNA at or above FL040, then according to ATC authorization.
REPIB 1	19	After REPIB at or above FL080, turn RIGHT to track 015° to ANGER at or above FL040, then according to ATC authorization.
ROKOL 1A	19	After ROKOL, track 153° to ANGER at or above FL040, then according to ATC authorization.

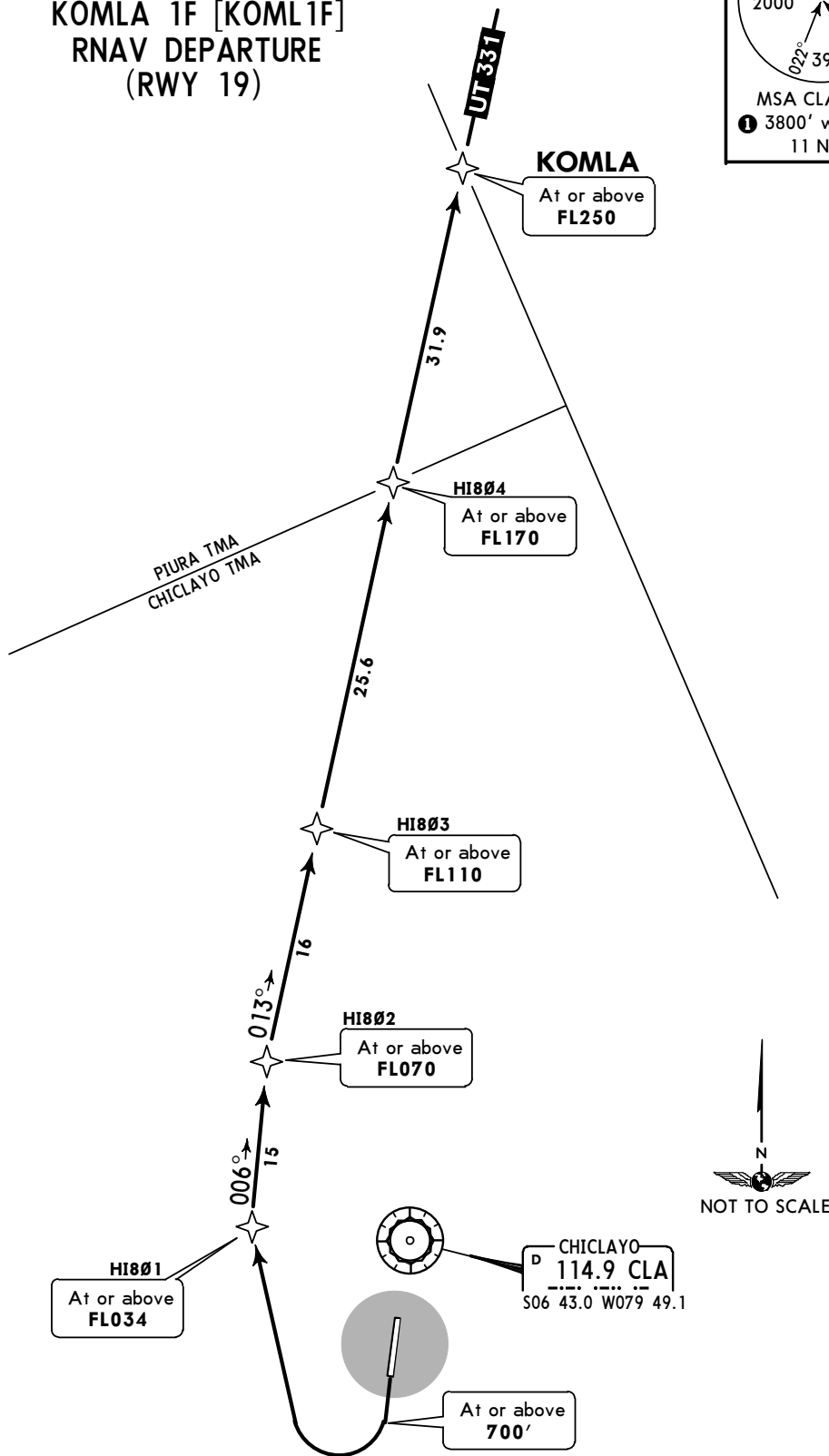


Apt Elev
 97'

Trans level: By ATC Trans alt: 3000'
 1. GNSS required.
 2. RNP 1 approval required.

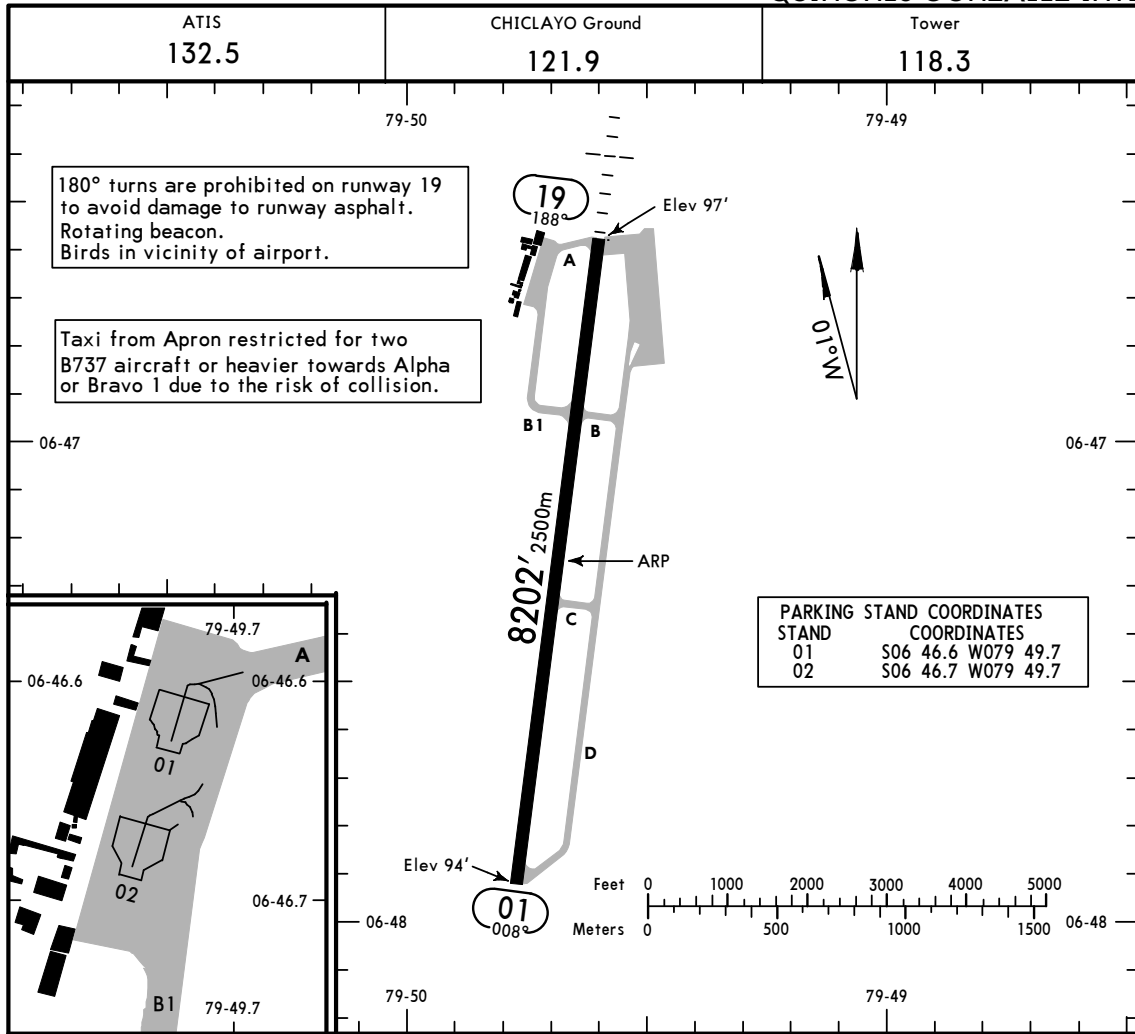


KOMLA 1F [KOML1F]
 RNAV DEPARTURE
 (RWY 19)



INITIAL CLIMB

Climb on runway heading to 700' or above, turn RIGHT direct to HI801, proceed on RNAV track to KOMLA at or above FL250.



ADDITIONAL RUNWAY INFORMATION

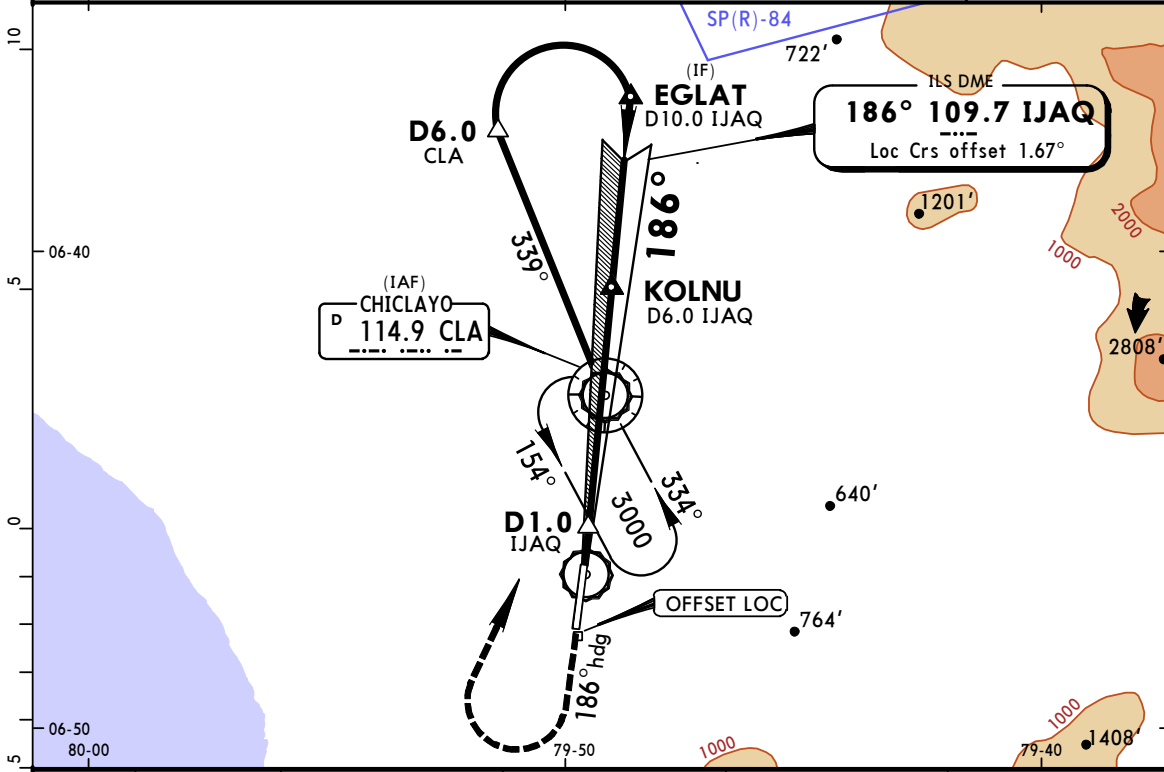
RWY	THRESHOLD	USABLE LENGTHS		TAKE-OFF	WIDTH
		LANDING BEYOND	GLIDE SLOPE		
01	RL				148'
19	RL ALS (non-std) PAPI-L (angle 3.0°)		7088' 2160m		45m

TAKE-OFF

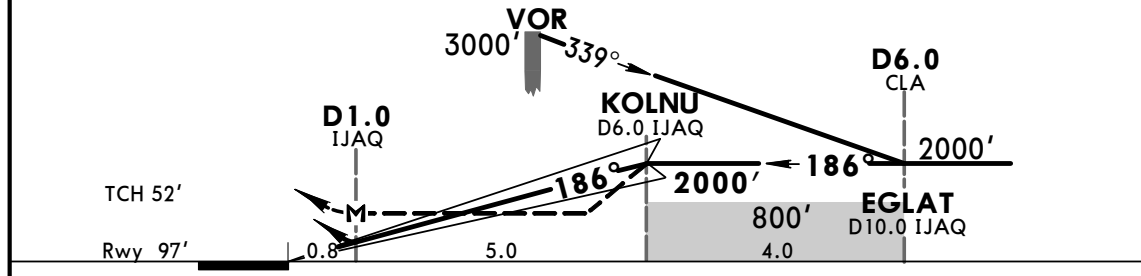
All Rwy's

	Take-Off Alternate Apt. Filed	Take-Off Alternate Apt. Not Filed
1 Eng	1600m or Higher Available Landing Minimums	
2 Eng	1 hr alternate (1 Eng Inop) 1600m	Available Landing Minimums
3 or more Eng	2 hr alternate (1 Eng Inop) 800m	

ATIS 132.5		CHICLAYO Approach 118.3		CHICLAYO Tower 118.3		Ground 121.9	
LOC IJAQ 109.7	Final Apch Crs 186°	Minimum Alt KOLNU 2000' (1903')	ILS DA(H) 390' (293')	Apt Elev 97'	Rwy 97'		
MISSED APCH: Climb on 186° heading to 1000', then turn RIGHT to CLA VOR. Climb to 3000'.							
Alt Set: hPa		Rwy Elev: 4 hPa		Trans level: By ATC		Trans alt: 3000'	
1. DME required.						MSA CLA VOR	



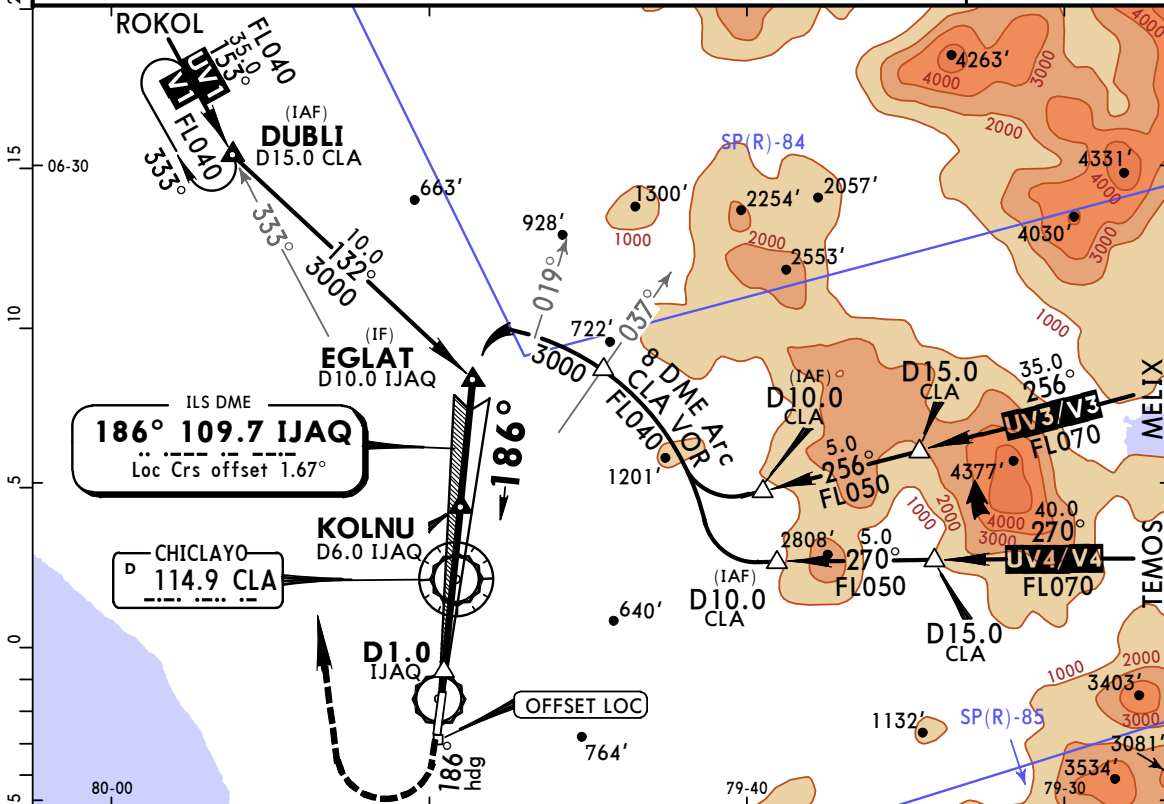
LOC (GS out)	IJAQ DME	2.0	3.0	4.0	5.0
	ALTITUDE	730'	1050'	1370'	1690'



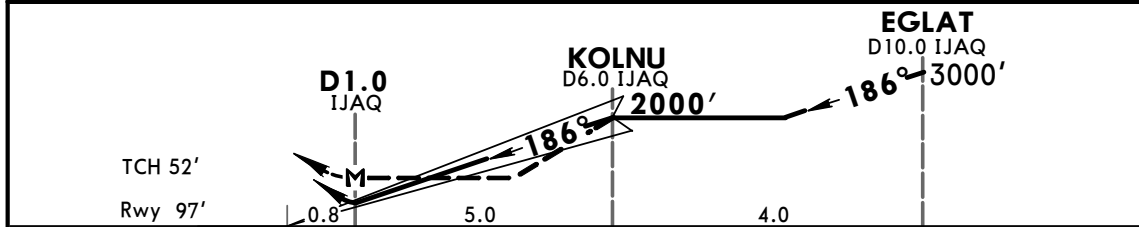
Gnd speed-Kts	70	90	100	120	140	160	ALS PAPI	1000' on ↑	186° hdg	RT	CLA 114.9
GS	3.00°	372	478	531	637	743					
MAP at D1.0 IJAQ											

STRAIGHT-IN LANDING RWY 19						CIRCLE-TO-LAND					
ILS DA(H) 390' (293')			LOC (GS out) MDA(H) 420' (323')			Not Authorized East of Airport					
FULL		ALS out		ALS out		Max Kts MDA(H)					
A						100	800' (703') - 3.0 km				
B						135					
C	1000m		1200m		1200m	180					
D					1600m	205	900' (803') - 5.0 km				

ATIS 132.5		CHICLAYO Approach 118.3		CHICLAYO Tower 118.3		Ground 121.9
LOC IJAQ 109.7	Final Apch Crs 186°	Minimum Alt KOLNU 2000' (1903')	ILS DA(H) 390' (293')	Apt Elev 97' Rwy 97'		
MISSED APCH: Climb on 186° heading to 1000', then turn RIGHT to DUBLI. Climb to FL040.						
Alt Set: hPa		Rwy Elev: 4 hPa	Trans level: By ATC		Trans alt: 3000'	
1. DME required.						MSA CLA VOR



LOC (GS out)	IJAQ DME	2.0	3.0	4.0	5.0
	ALTITUDE	730'	1050'	1370'	1690'

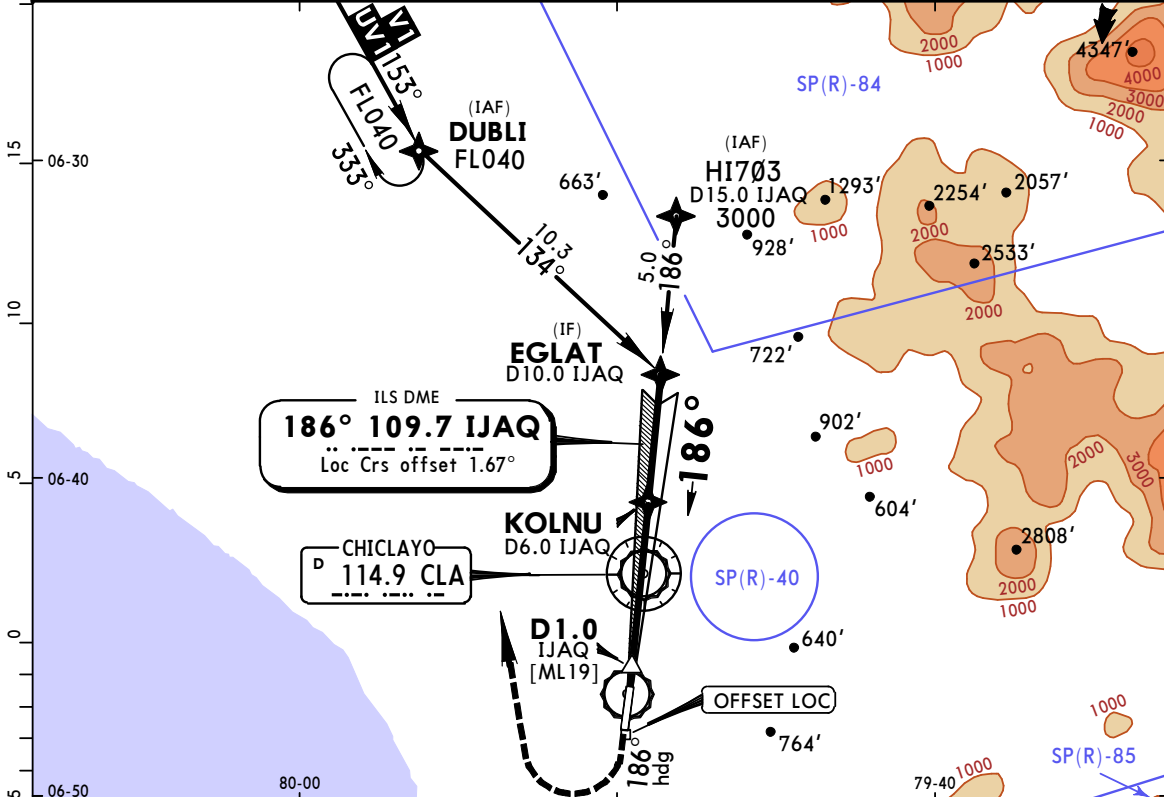


Gnd speed-Kts	70	90	100	120	140	160	ALS PAPI	1000' on 186° hdg	RT	DUBLI
GS	3.00°	372	478	531	637	743				
MAP at D1.0 IJAQ										

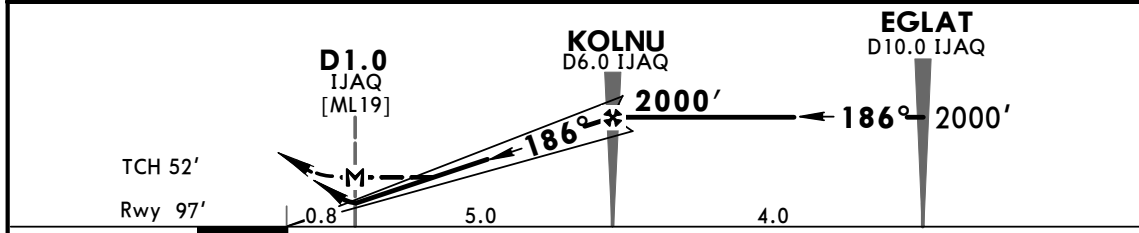
STRAIGHT-IN LANDING RWY 19				CIRCLE-TO-LAND	
ILS DA(H) 390' (293')		LOC (GS out) MDA(H) 420' (323')		Not Authorized East of Airport	
FULL	ALS out	ALS out	ALS out	Max Kts	MDA(H)
A				100	800' (703') -3.0 km
B				135	
C	1000m	1200m	1200m	180	900' (803') -5.0 km
D				205	

PANS OPS

ATIS 132.5		CHICLAYO Approach 118.3		CHICLAYO Tower 118.3		Ground 121.9
LOC IJAQ 109.7	Final Apch Crs 186°	Minimum Alt KOLNU 2000' (1903')	ILS DA(H) 390' (293')	Apt Elev 97' Rwy 97'		
MISSED APCH: Climb on heading 186° to 1000', then turn RIGHT and to DUBLI climbing to FL040.						
Alt Set: hPa		Rwy Elev: 4 hPa		Trans level: By ATC		Trans alt: 3000'
1. DME required. 2. RNP 1.0 required on initial and missed approach.						



LOC	IJAQ DME	2.0	3.0	4.0	5.0
(GS out)	ALTITUDE	730'	1050'	1370'	1690'

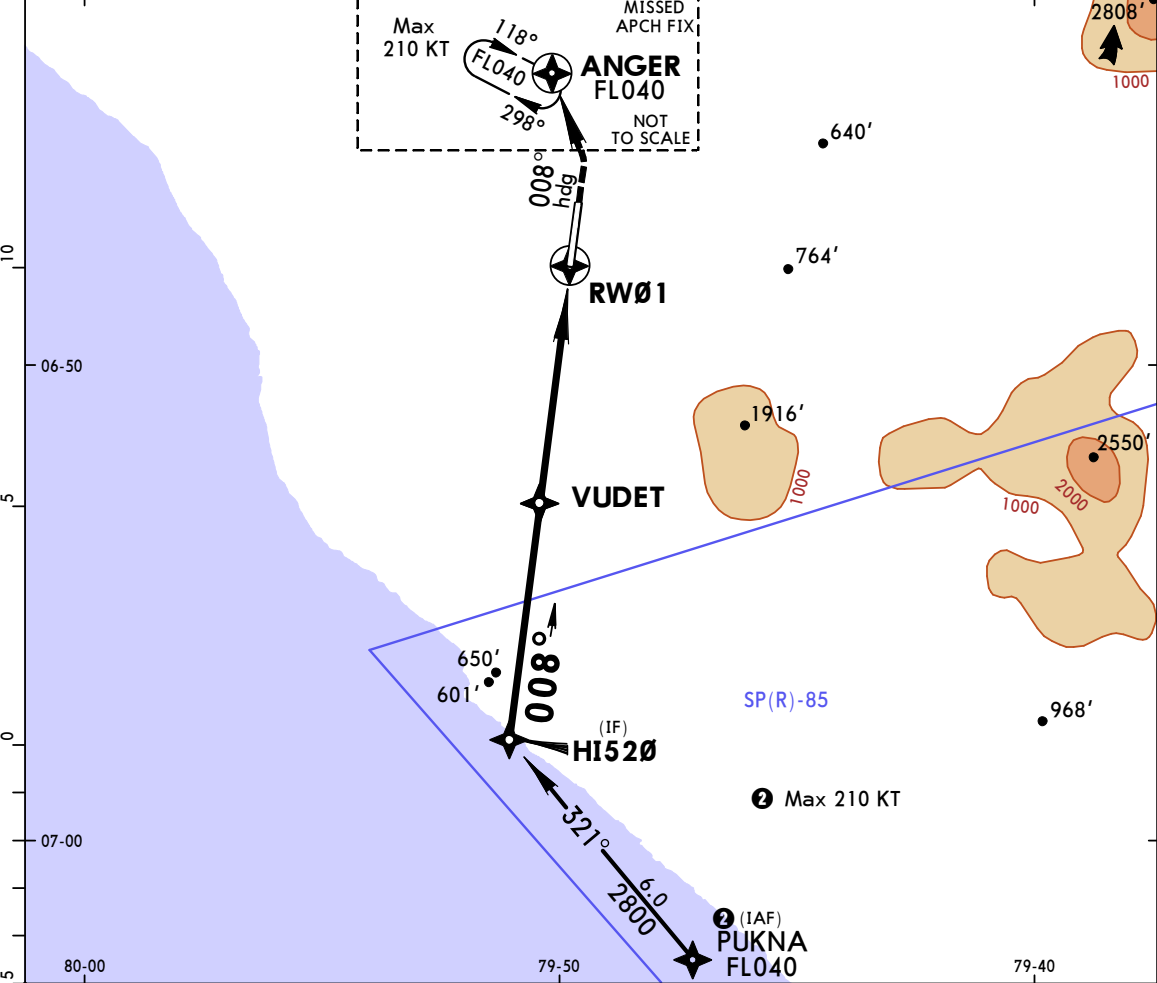


Gnd speed-Kts	70	90	100	120	140	160	ALS PAPI	1000'	186° hdg	RT	DUBLI
GS	3.00°	372	478	531	637	743					
MAP at D1.0 IJAQ											

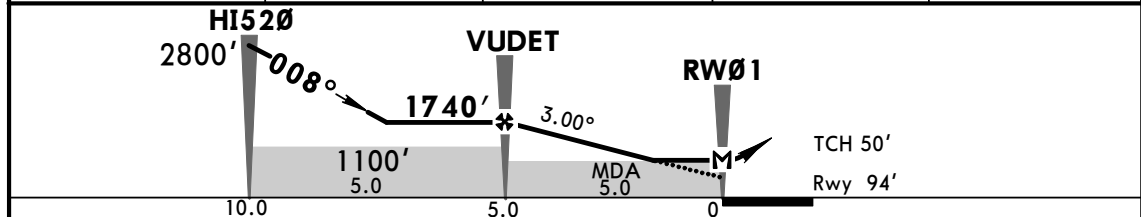
STRAIGHT-IN LANDING RWY 19				CIRCLE-TO-LAND	
ILS DA(H) 390' (293')		LOC (GS out) MDA(H) 420' (323')		Not Authorized East of Airport	
FULL		ALS out		Max Kts	
A		A		800' (703') - 3000m	
B		B		135	
C		C		180	
D		D		900' (803') - 5000m	

PANS OPS

ATIS 132.5		CHICLAYO Approach 118.3		CHICLAYO Tower 118.3		Ground 121.9	
RNP	Final Apch Crs 008°	Minimum Alt 1740' (1646')	LNAV MDA(H) 590' (496')	Apt Elev 97'	Rwy 94'		
MISSED APCH: Climb to 1000' heading 008°, turn LEFT climbing to FL040 direct to ANGER.							
Alt Set: hPa		Apt Elev: 4 hPa		Trans level: By ATC		Trans alt: 3000'	



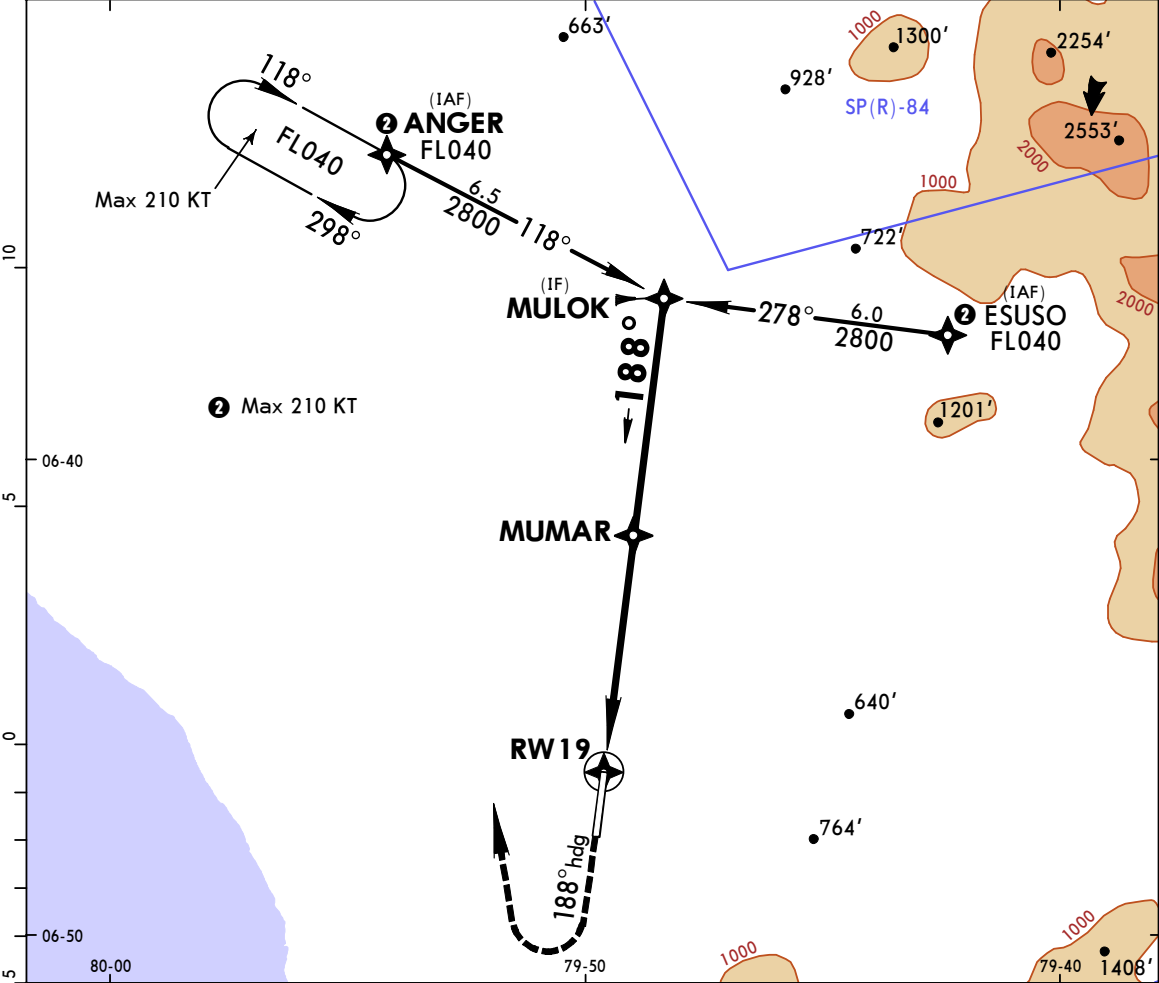
NM TO RW01	VUDET	4.0	3.0	2.0
ALTITUDE	1740'	1420'	1100'	780'



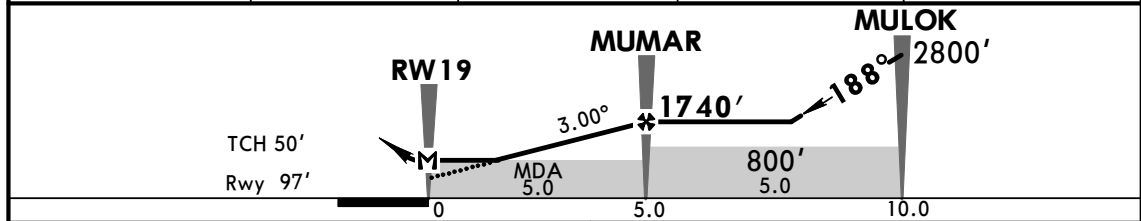
Gnd speed-Kts	70	90	100	120	140	160	1000' ↑ on ↓ 008° FL040 ↑ on ↓ LT ANGER
Descent angle 3.00°	372	478	531	637	743	849	
MAP at RW01							

STRAIGHT-IN LANDING RWY 01 LNAV MDA(H) 590' (496')		Max Kts	CIRCLE-TO-LAND Not Authorized East of Airport MDA(H)
A			100
B	1.6 km	135	
C	2.0 km	180	900' (803') -5.0 km
D	2.4 km	205	

ATIS 132.5		CHICLAYO Approach 118.3		CHICLAYO Tower 118.3		Ground 121.9	
RNP	Final Apch Crs 188°	Minimum Alt MUMAR 1740' (1643')	LNAV MDA(H) 540' (443')	Apt Elev 97'	Rwy 97'		
Alt Set: hPa		Apt Elev: 4 hPa		Trans level: By ATC		Trans alt: 3000'	

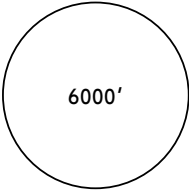


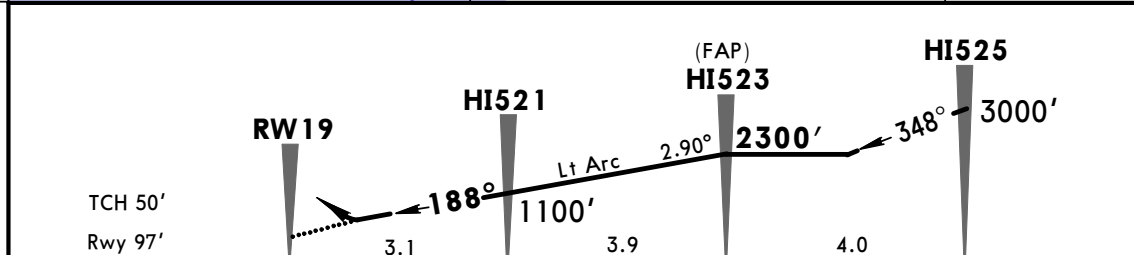
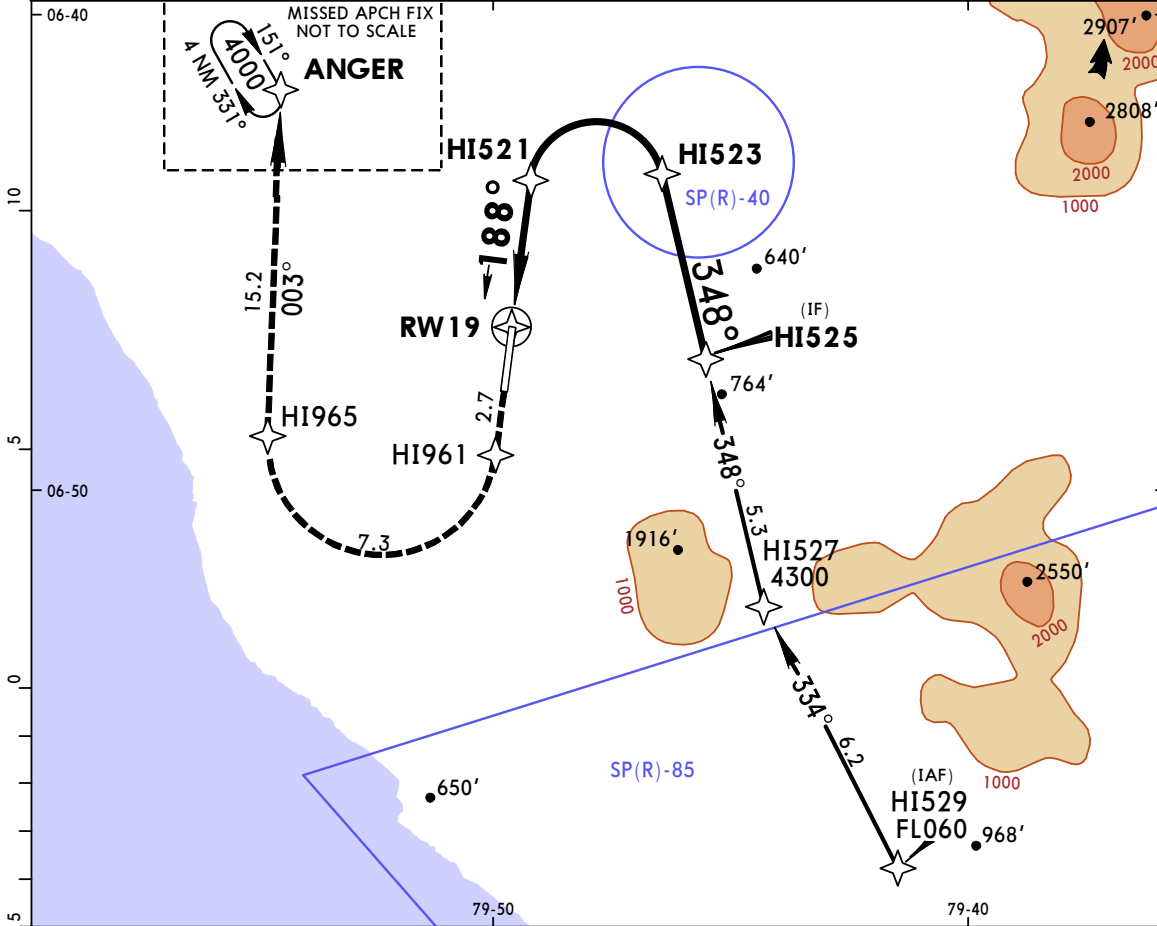
NM TO RW19	2.0	3.0	4.0	MUMAR
ALTITUDE	780'	1100'	1420'	1740'



Gnd speed-Kts	70	90	100	120	140	160	ALS	1000'	188° hdg	4000'	ANGER
Descent angle	3.00°	372	478	531	637	743					
MAP at RW19								PAPI	↑	RT	

PANS OPS	STRAIGHT-IN LANDING RWY 19 LNAV MDA(H) 540' (443')			ALS out	Max Kts	CIRCLE-TO-LAND Not Authorized East of Airport	
						MDA(H)	
	A	1.6 km			100	800' (703') -3.0 km	
	B	2.0 km			135	900' (803') -5.0 km	
C	2.4 km			180			
D				205			

ATIS 132.5		CHICLAYO Approach 118.3		CHICLAYO Tower 118.3		Ground 121.9		
RNAV	Final Apch Crs 188°	Minimum Alt HI523 2300' (2203')	RNP 0.30 DA(H) 400' (303')	Apt Elev 97' Rwy 97'		 <p>6000'</p> <p>MSA RW19</p>		
<p>MISSED APCH: Climb to 4000' via the missed approach RNP track to ANGER and join hold. Follow instructions from ATC.</p>								
<p>Alt Set: hPa Rwy Elev: 4 hPa Trans level: By ATC Trans alt: 3000'</p> <p>1. SPECIAL AIRCRAFT & AIRCREW AUTHORIZATION REQUIRED. 2. RF required. 3. For uncompensated Baro-VNAV systems, procedure not authorized below 5°C (41°F) or above 54°C (129°F).</p>								



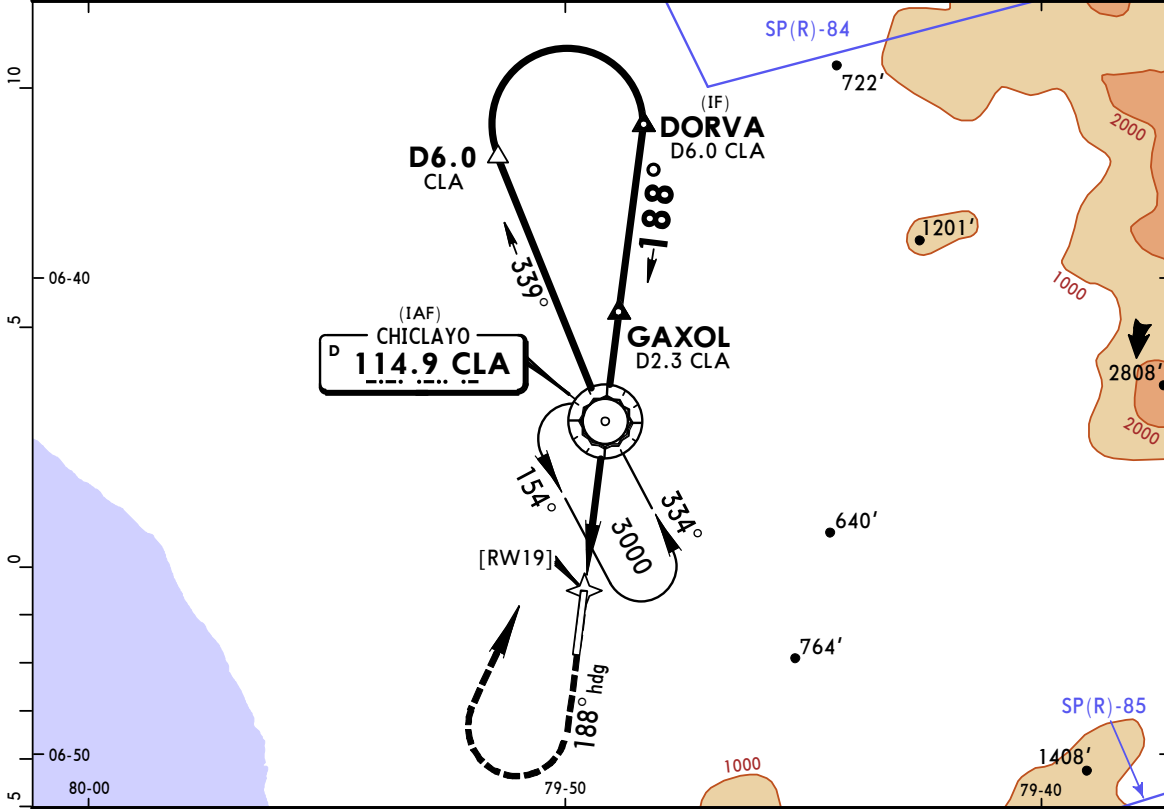
Gnd speed-Kts	70	90	100	120	140	160	ALS PAPI	4000' via RNP track ANGER
Descent Angle 2.90°	359	462	513	616	718	821		
MAP at DA								

1 STRAIGHT-IN LANDING RWY 19
RNP 0.30
DA(H) **400'** (303')
ALS out

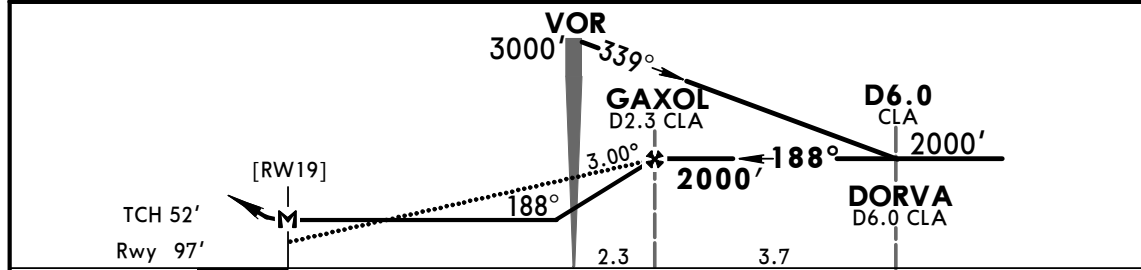
A	
B	NOT APPLICABLE
C	1200m
D	NOT APPLICABLE

1 Circling not authorized.

ATIS 132.5		CHICLAYO Approach 118.3		CHICLAYO Tower 118.3		Ground 121.9	
VOR CLA 114.9	Final Apch Crs 188°	Minimum Alt GAXOL 2000' (1903')	MDA(H) 570' (473')	Apt Elev 97' Rwy 97'			
MISSED APCH: Climb on 188° heading to 1000', then turn RIGHT to CLA VOR. Climb to 3000'.							
Alt Set: hPa		Rwy Elev: 4 hPa		Trans level: By ATC		Trans alt: 3000'	
1. DME required.						MSA CLA VOR	



CLA DME	CLA VOR	1.0	2.0	GAXOL
ALTITUDE	1280'	1600'	1920'	2000'



Gnd speed-Kts	70	90	100	120	140	160	ALS PAPI	1000' ↑ on	188° hdg	RT	CLA 114.9
Descent Angle 3.00°	372	478	531	637	743	849					
GAXOL to MAP	5.9	5:03	3:56	3:32	2:57	2:32	2:13				

STRAIGHT-IN LANDING RWY 19 MDA(H) 570' (473')				CIRCLE-TO-LAND Not Authorized East of Airport			
ALS out				Max Kts			
A	1.6 km			100	800'(703') -3.0 km		
B				135			
C	2.8 km			180	900'(803') -5.0 km		
D				205			

PANS OPS