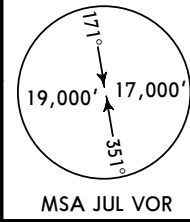
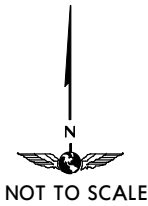
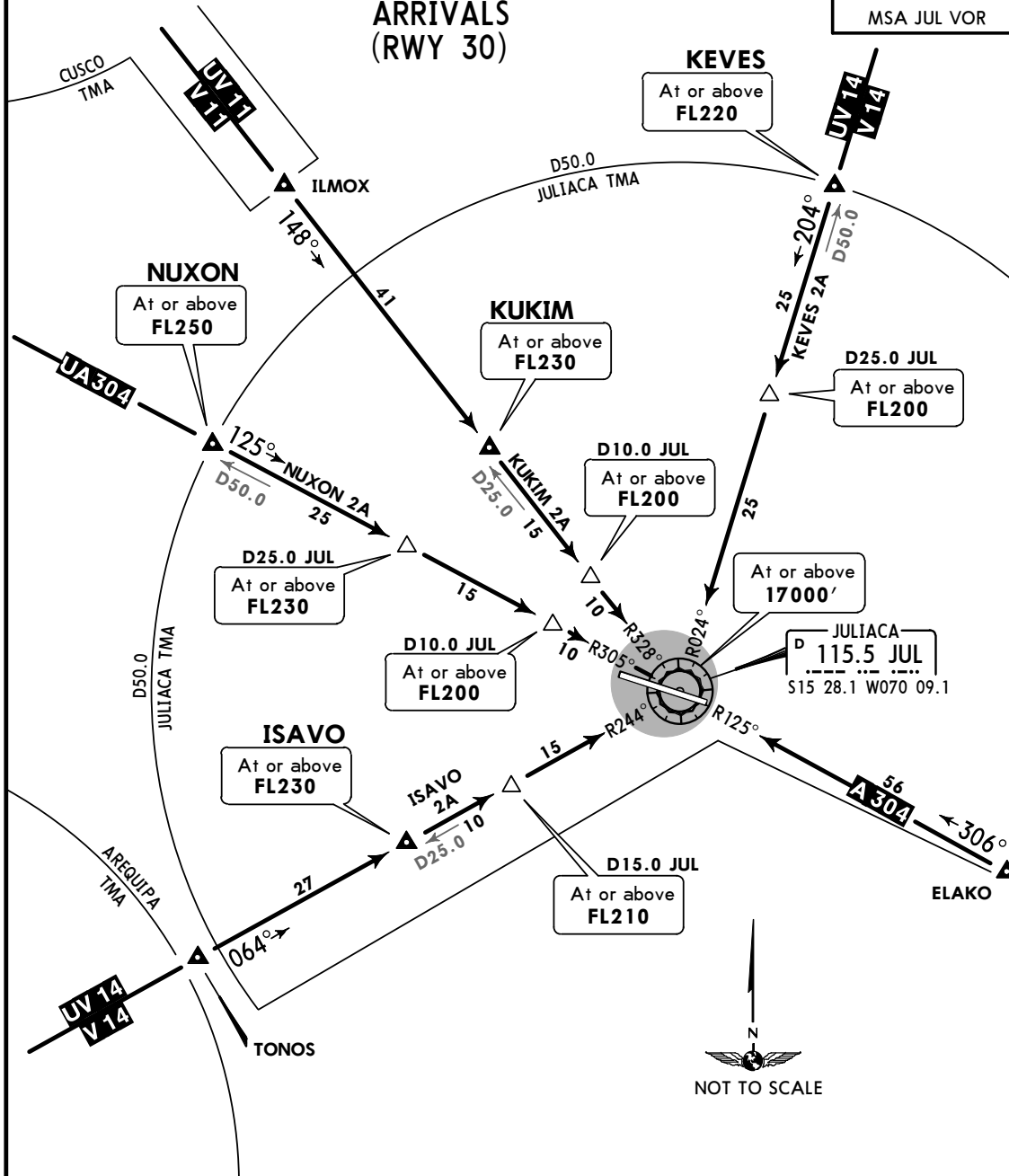


Apt Elev 12552'
Alt Set: hPa
Trans level: By ATC Trans alt: 17000'



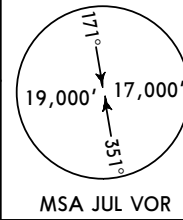
ISAVO 2A [ISAV2A], KEVES 2A [KEVE2A]
KUKIM 2A [KUKI2A], NUXON 2A [NUX02A]
ARRIVALS
(RWY 30)



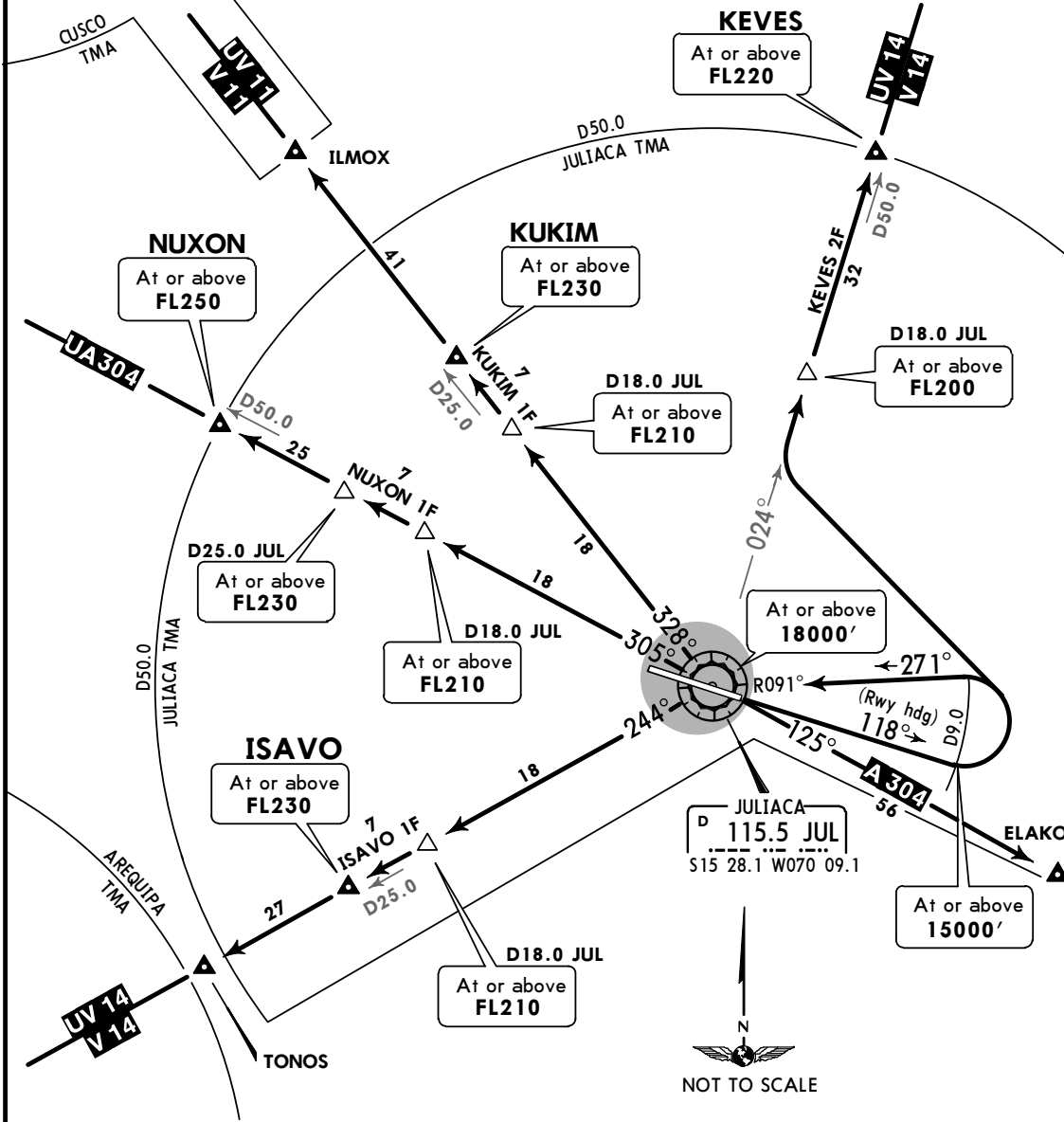
STAR	ROUTING
ISAVO 2A	Descend from route V-14/UV-14 on JUL R-244 (heading 064°) to ISAVO, to D15.0 JUL, to JUL VOR.
KEVES 2A	Descend from route V-14/UV-14 on JUL R-024 (heading 204°) to KEVES, to D25.0 JUL, to JUL VOR.
KUKIM 2A	Descend from route V-11/UV-11 on JUL R-328 (heading 148°) to KUKIM, to D10.0 JUL, to JUL VOR.
NUXON 2A	Descend from route UA-304 on JUL R-305 (heading 125°) to NUXON, to D25.0 JUL, to D10.0 JUL, to JUL VOR.
LANDING	
Continue according to ATC instructions.	

Apt Elev
12552'

Trans level: By ATC Trans alt: 17000'



ISAVO 2F [ISAV2F], KEVES 2F [KEVE2F]
KUKIM 1F [KUKI1F], NUXON 1F [NUXO1F]
DEPARTURES
(RWY 12)

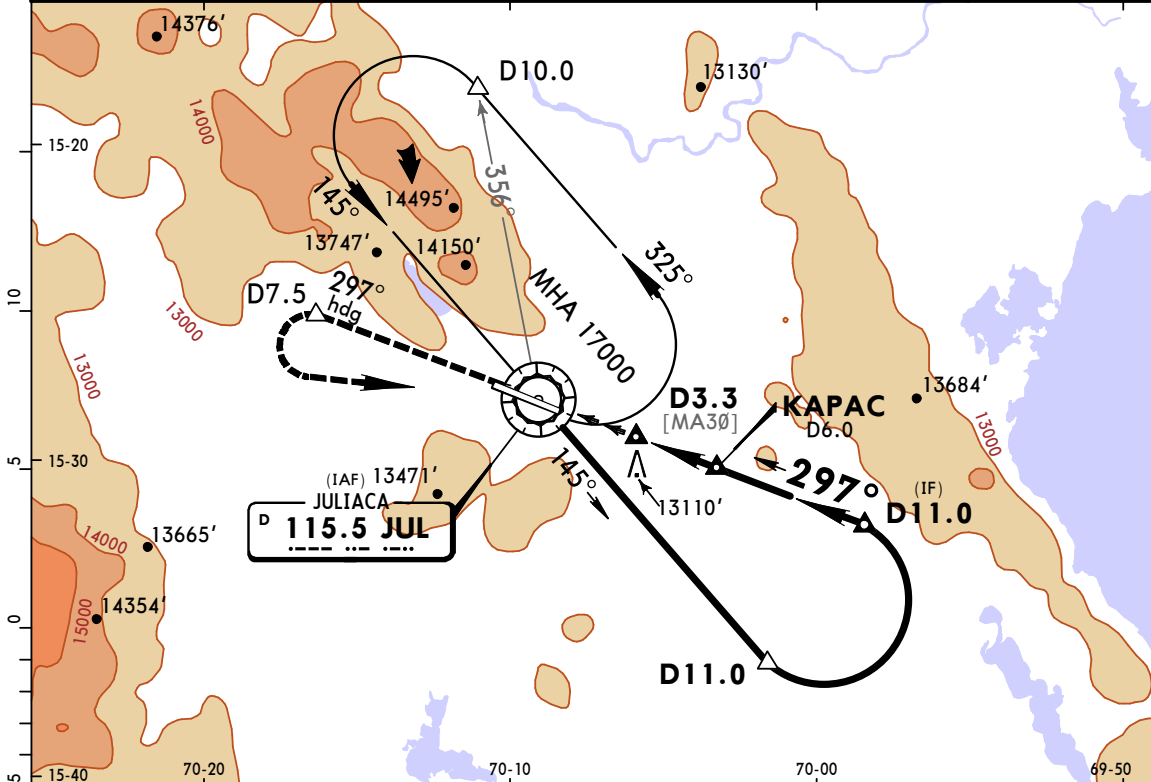


INITIAL CLIMB

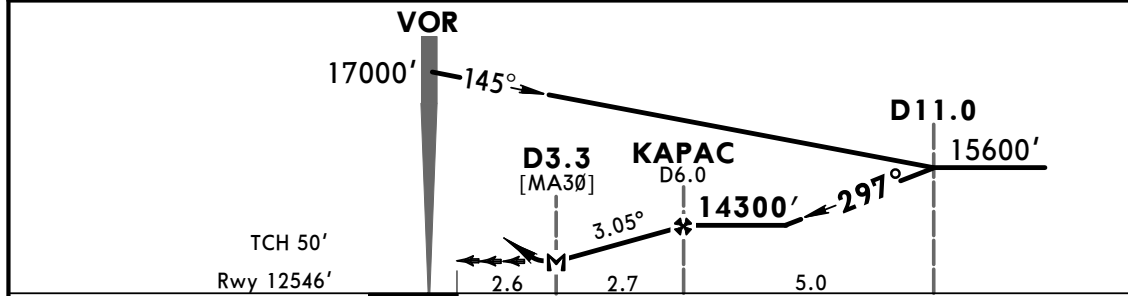
Climb on runway heading (118°), cross D9.0 JUL.

SID	ROUTING
ISAVO 2F	At D9.0 JUL turn LEFT to intercept and proceed via JUL R-091 (heading 271°) to JUL VOR, turn LEFT to intercept JUL R-244 (heading 244°) to D18.0 JUL, to ISAVO. Continue climbing on V-14/UV-14 and follow ATC instructions.
KEVES 2F	At D9.0 JUL turn LEFT to intercept and proceed via JUL R-024 (heading 024°) to D18.0 JUL, to KEVES. Continue climbing on V-14/UV-14 and follow ATC instructions.
KUKIM 1F	At D9.0 JUL turn LEFT to intercept and proceed via JUL R-091 (heading 271°) to JUL VOR, turn RIGHT to intercept JUL R-328 (heading 328°) to D18.0 JUL, to KUKIM. Continue climbing on V-11/UV-11 and follow ATC instructions.
NUXON 1F	At D9.0 JUL turn LEFT to intercept and proceed via JUL R-091 (heading 271°) to JUL VOR, turn RIGHT to intercept JUL R-305 (heading 305°) to D18.0 JUL, to D25.0 JUL, to NUXON. Continue climbing on UA-304 and follow ATC instructions.

*JULIACA Radio (FIS/AFIS) 126.9				*JULIACA Tower 118.1	
VOR JUL 115.5	Final Apch Crs 297°	Minimum Alt KAPAC 14300' (1754')	MDA(H) 13500' (954')	Apt Elev 12552'	Rwy 12546'
MISSED APCH: Climb on 297° heading, cross D7.5 at 15000' or above, then LEFT turn to JUL VOR and hold at minimum of 17000'. Maximum IAS 230 Kts.					
Alt Set: hPa Rwy Elev: 382 Trans level: By ATC Trans alt: 17000' 1. DME Required. 2. Max IAS for base leg 200 Kts.					



JUL DME	4.0	5.0	6.0
ALTITUDE	13700'	14000'	14300'



Gnd speed-Kts	70	90	100	120	140	160	SALS PAPI ↑ on 297° hdg D7.5
Descent angle	3.05°	378	486	540	648	755	
MAP at D3.3							

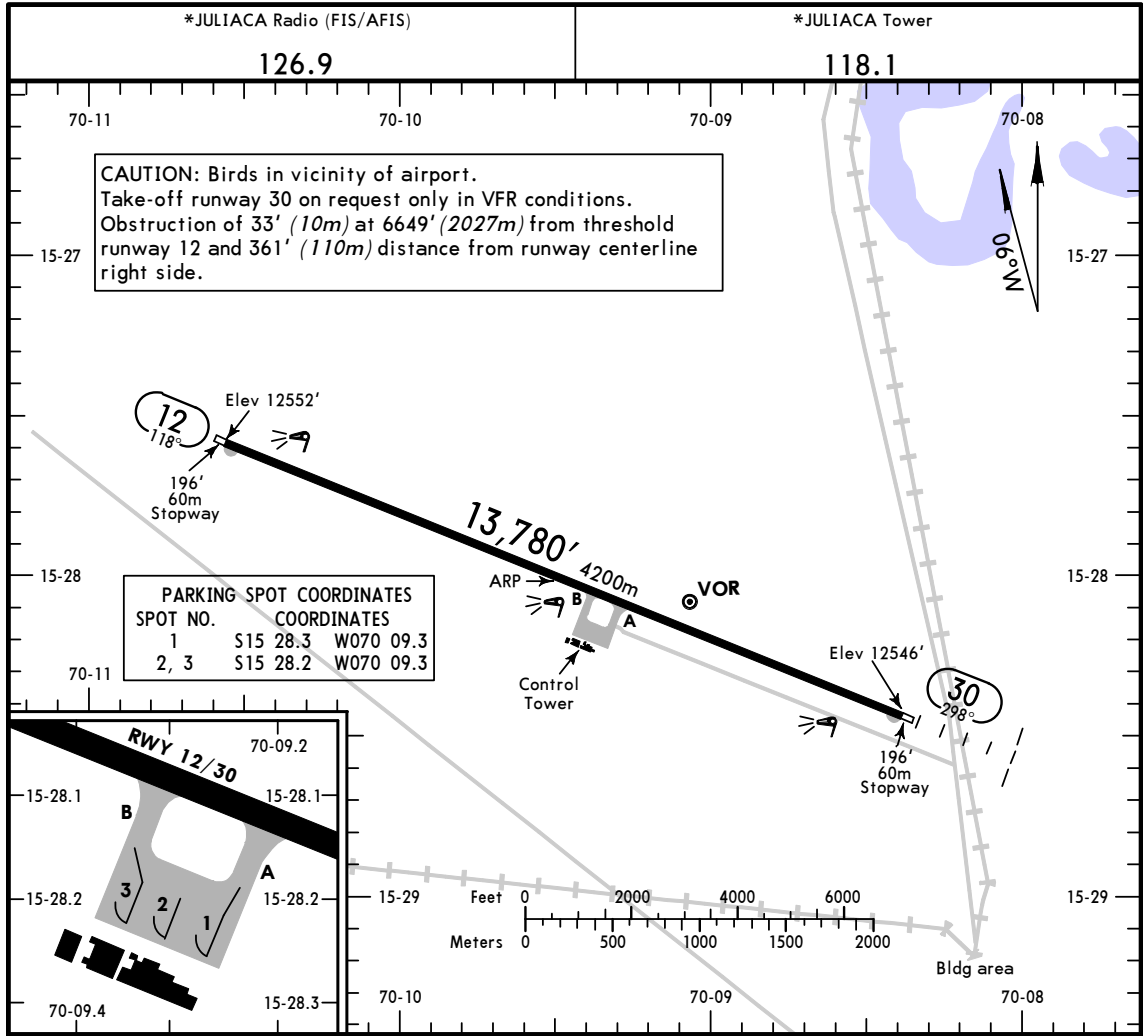
STRAIGHT-IN LANDING RWY 30 MDA(H) 13500' (954')			CIRCLE-TO-LAND Authorized only Southwest of Airport Not Authorized at Night			
ALS out			MDA(H)			
A	NOT APPLICABLE			NOT APPLICABLE		
B				135		
C	5.0 km			180		
D				205		
			14400' (1848') -8.0 km			

PANS OPS

SPJL/JUL
 Apt Elev 12552'
 S15 28.0 W070 09.5

JEPPESSEN
 14 AUG 15
 Eff 20 Aug (13-1)

JULIACA, PERU
 INCA MANCO CAPAC INTL



ADDITIONAL RUNWAY INFORMATION

RWY	USABLE LENGTHS		TAKE-OFF	WIDTH
	Threshold	Landing Beyond Glide Slope		
12	RL (60m)	PAPI-L (angle 3.0°)		148'
30	RL (60m)	SALS PAPI-L (angle 3.0°)		45m

TAKE-OFF

	Rwy 30	
1 & 2 Eng	On request only in VFR conditions	
3 & 4 Eng		

CHANGES: Magnetic variation, rwy bearings.

© JEPPESSEN, 2003, 2015. ALL RIGHTS RESERVED.