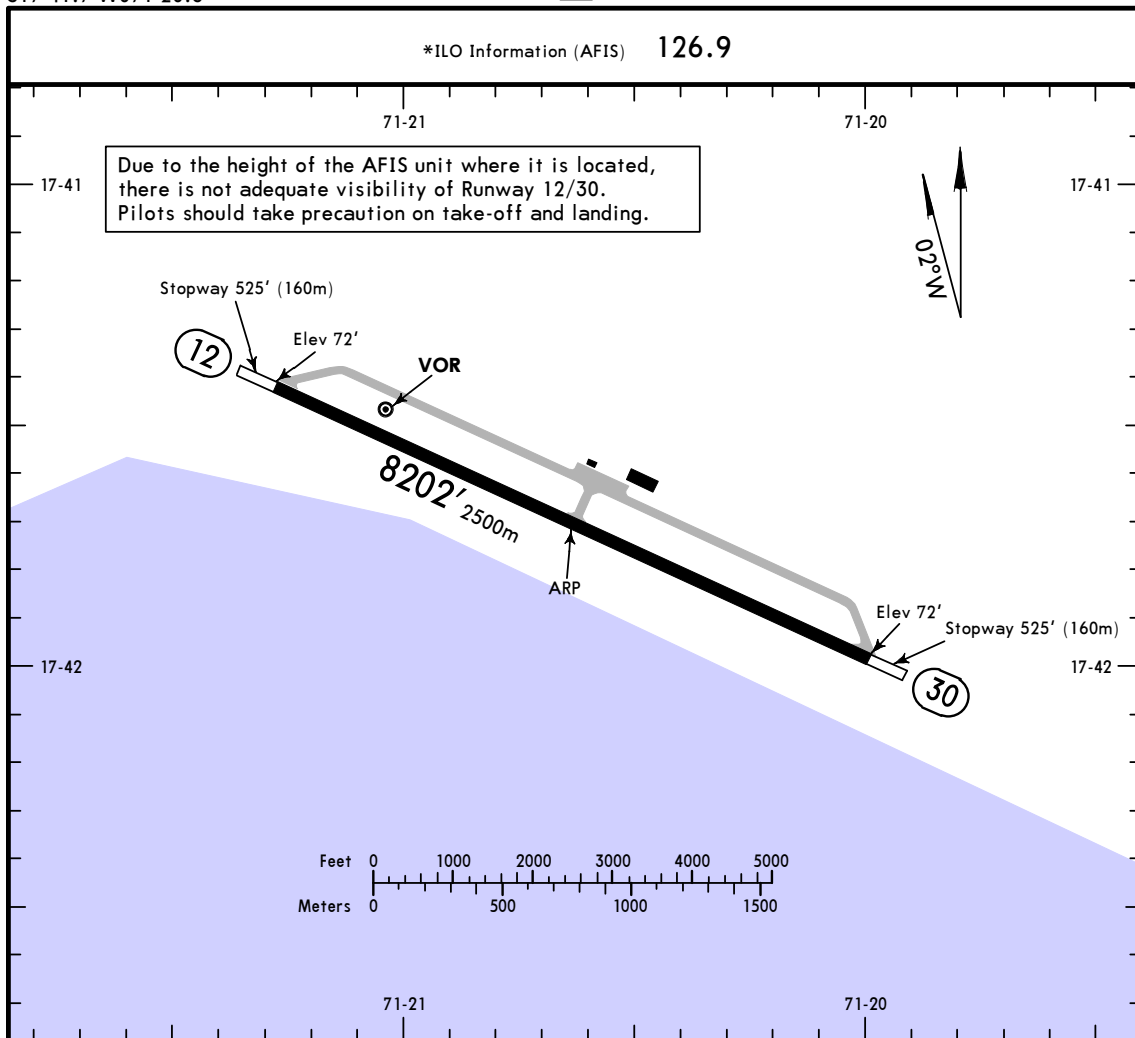


*ILO Information (AFIS) 126.9



ADDITIONAL RUNWAY INFORMATION

RWY	USABLE LENGTHS			WIDTH
	LANDING BEYOND Threshold	Glide Slope	TAKE-OFF	
12 30				148' 45m

TAKE-OFF

All Rwy's

	Take-Off Alternate Apt. Filed	Take-Off Alternate Apt. Not Filed
1 Eng	1600m or Higher Available Landing Minimums	
2 Eng	1 hr alternate (1 Eng Inop) 1600m	Available Landing Minimums
3 or more Eng	2 hr alternate (1 Eng Inop) 800m	

SPLO
ILO

JEPPESEN

8 SEP 17
Eff 14 Sep

(13-1)

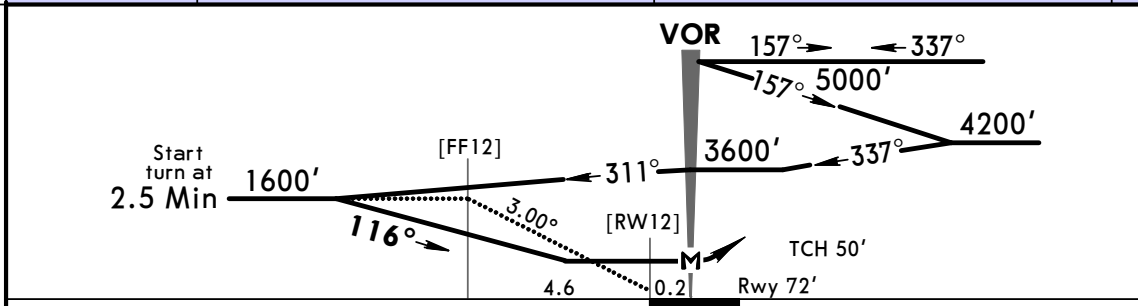
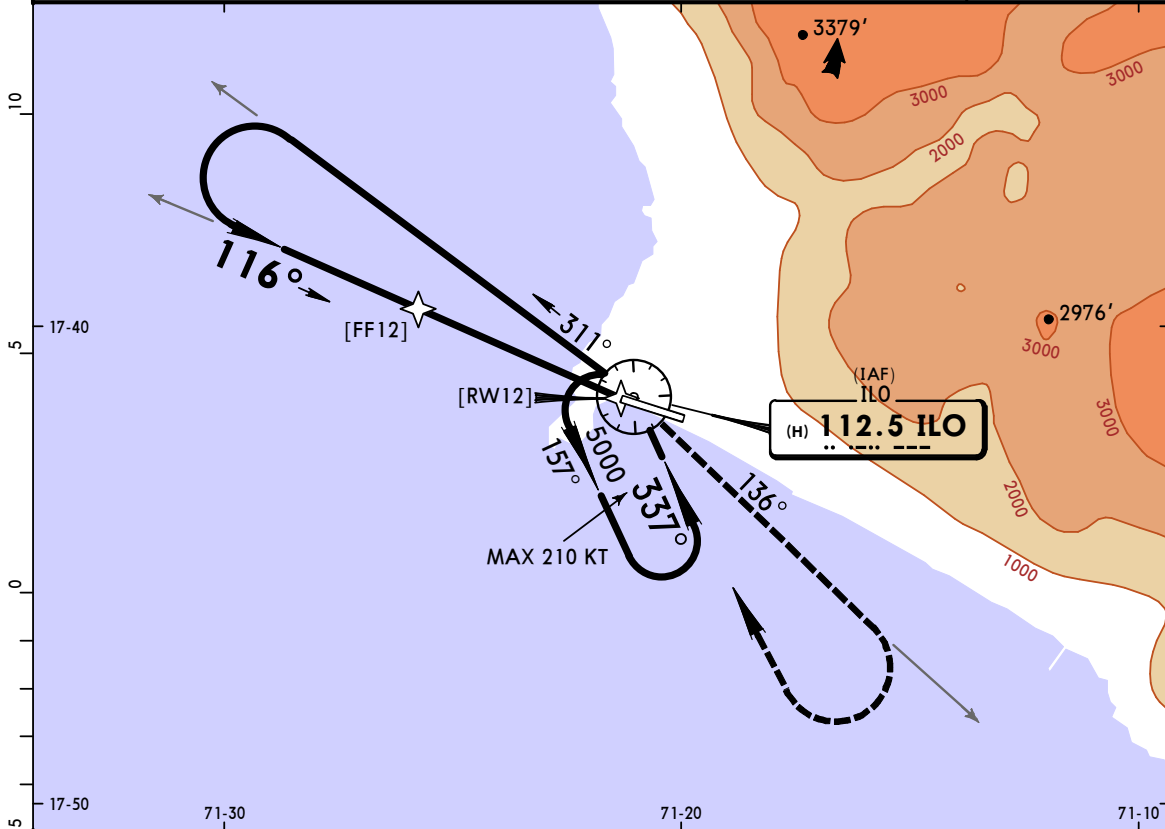
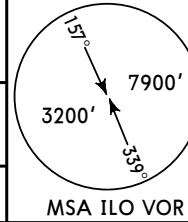
CAT A & B

ILO, PERU
VOR Rwy 12

*ILO Radio (AFIS) 126.9

BRIEFING STRIP™

VOR ILO 112.5	Final Apch Crs 116°	No FAF	MDA(H) 650' (578')	Apt Elev 72' Rwy 72'
MISSED APCH: Climb on ILO VOR R-136 to 3000', then turn RIGHT to hold at ILO VOR.				
Alt Set: hPa		Rwy Elev: 3 hPa	Trans level: By ATC	Trans alt: 4000'
1. Base turn MAX 210 KT.				



Gnd speed-Kts	70	90	100	120	140	160	3000' ILO on 112.5 RT R-136	ILO 112.5
Descent Angle 3.00°	372	478	531	637	743	849		
MAP at VOR								

STRAIGHT-IN LANDING RWY 12		CIRCLE-TO-LAND RWY30	
MDA(H) 650' (578')		Not Authorized Northeast and East of Airport	
2.6 km		Max Kts 100	650' (578') - 3.8 km
NOT APPLICABLE		C	NOT APPLICABLE
		D	

PANS OPS

CHANGES: MSA, procedure.

© JEPPESEN, 2003, 2017. ALL RIGHTS RESERVED.

SPLO
ILO

JEPPESEN

8 SEP 17
Eff 14 Sep (13-2)

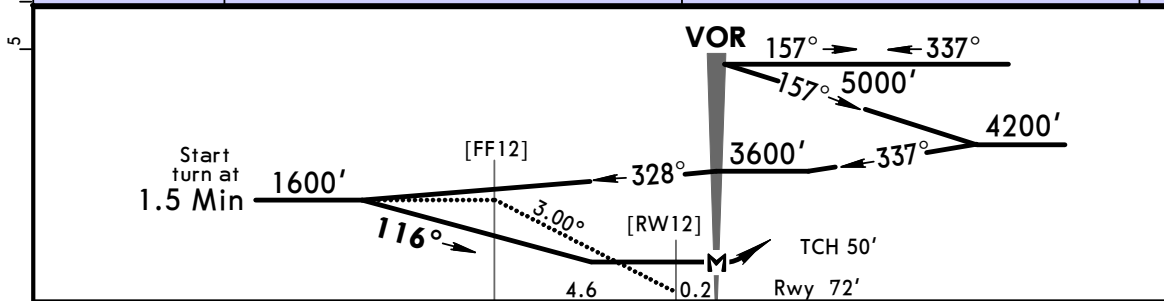
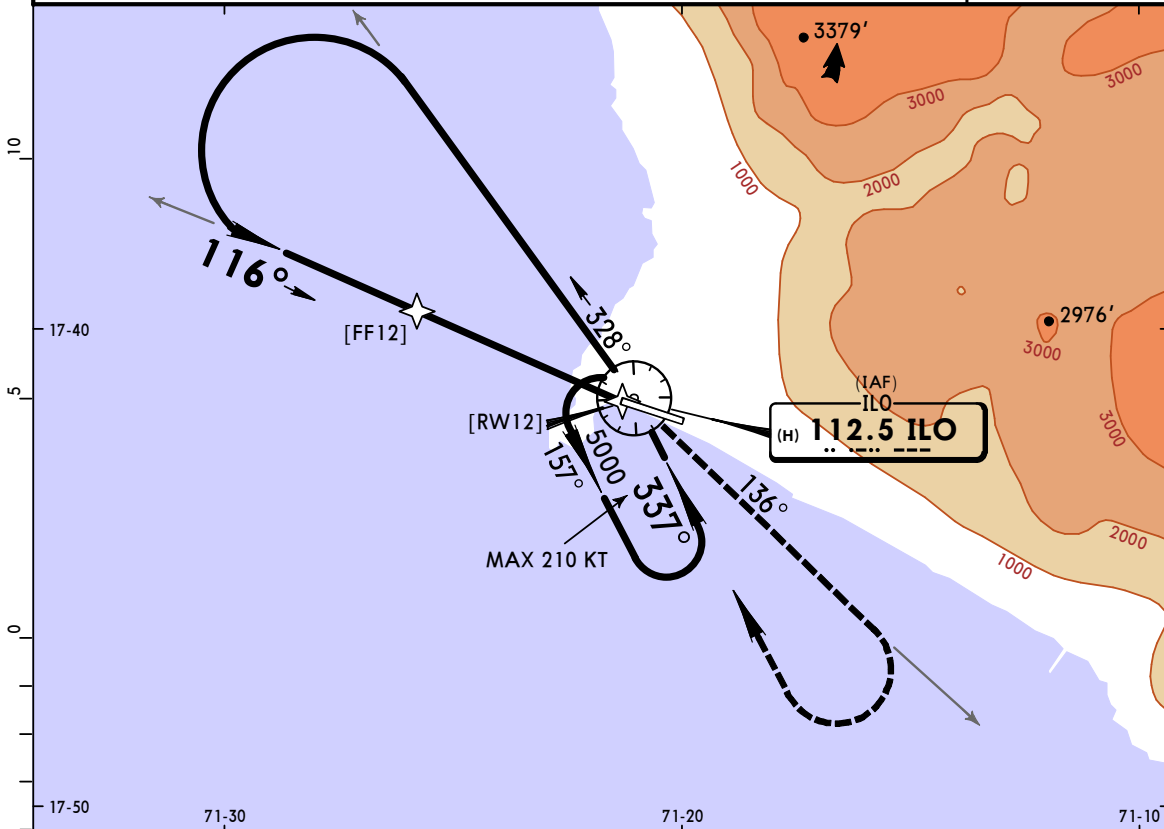
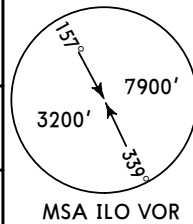
ILO, PERU

CAT C VOR Rwy 12

*ILO Radio (AFIS) 126.9

BRIEFING STRIP™

VOR ILO 112.5	Final Apch Crs 116°	No FAF	MDA(H) 650' (578')	Apt Elev 72' Rwy 72'
MISSED APCH: Climb on ILO VOR R-136 to 3000', then turn RIGHT to hold at ILO VOR.				
Alt Set: hPa Rwy Elev: 3 hPa		Trans level: By ATC		Trans alt: 4000'
1. Base turn MAX IAS 210 KT.				



Gnd speed-Kts	70	90	100	120	140	160	3000' on ILO RT R-136	ILO 112.5
Descent Angle 3.00°	372	478	531	637	743	849		
MAP at VOR								

STRAIGHT-IN LANDING RWY 12		CIRCLE-TO-LAND RWY30	
MDA(H) 650' (578')		Not Authorized Northeast and East of Airport	
A	NOT APPLICABLE	Max Kts	MDA(H)
B	NOT APPLICABLE	A	NOT APPLICABLE
C	3.4 km	180	670'(598') -4.7 km
D	NOT APPLICABLE	D	NOT APPLICABLE

PANS OPS

CHANGES: MSA, procedure.

© JEPPESEN, 2003, 2017. ALL RIGHTS RESERVED.