

ADDITIONAL RUNWAY INFORMATION

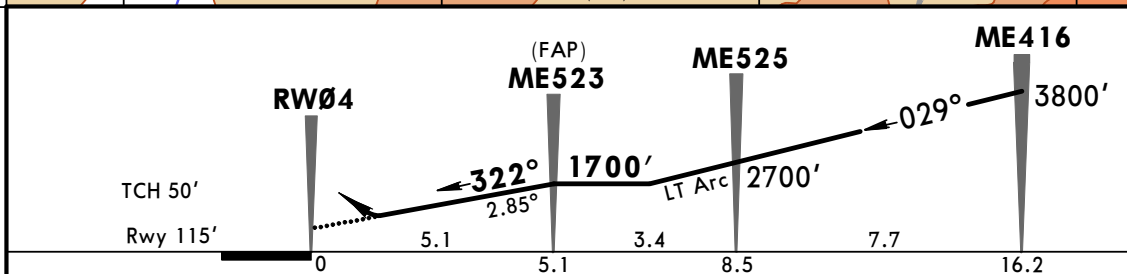
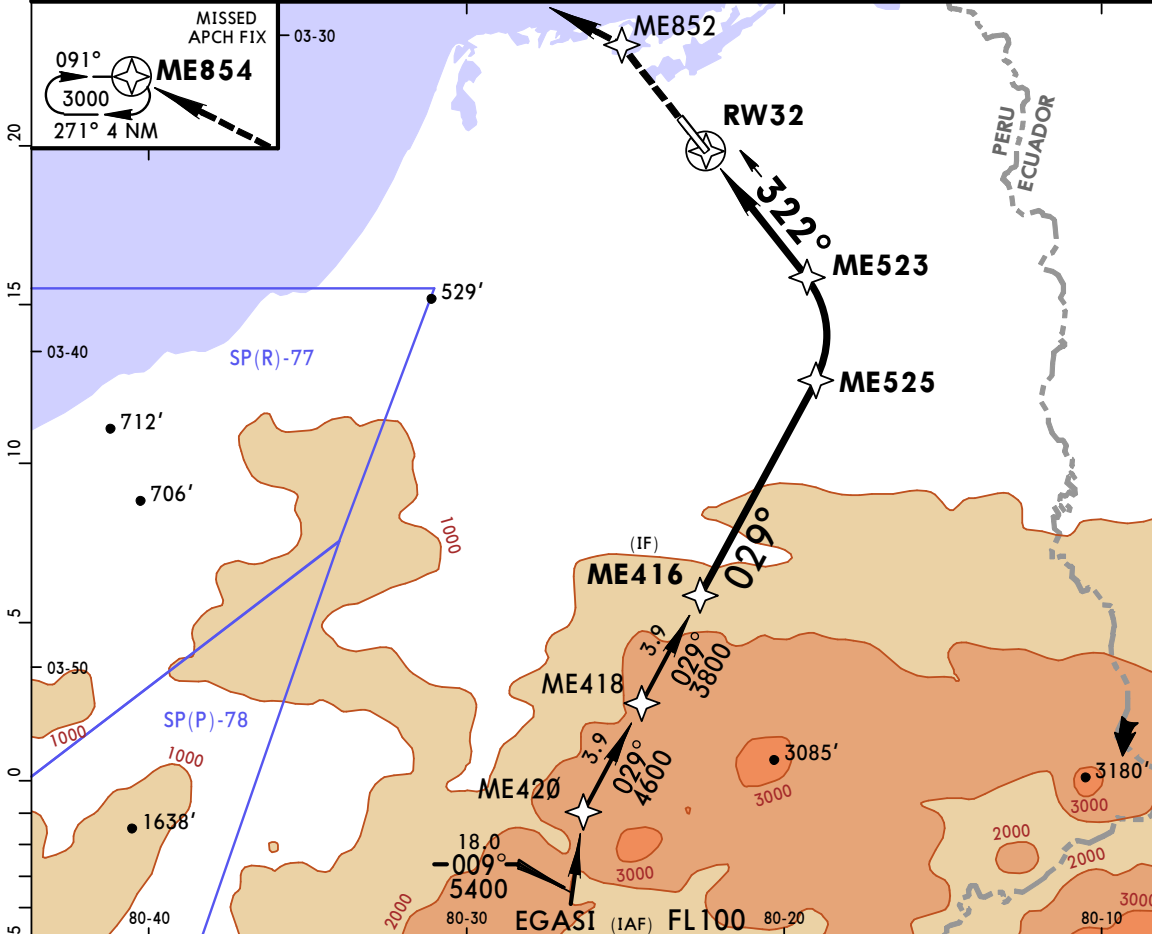
RWY		USABLE LENGTHS		TAKE-OFF	WIDTH
		LANDING BEYOND Threshold	Glide Slope		
14	RL PAPI-L (angle 3.0°)				148'
32	RL SALS PAPI-L (angle 3.0°)				45m

TAKE-OFF

	All Rwys	
	Take-Off Alternate Apt. Filed	Take-Off Alternate Apt. Not Filed
1 Eng	1600m or Higher Available Landing Minimums	
2 Eng	1 hr alternate (1 Eng Inop) 1600m	Available Landing Minimums
3 or more Eng	2 hr alternate (1 Eng Inop) 800m	

\*TUMBES Tower 126.8

BRIEFING STRIP™	RNAV	Final Apch Crs <b>322°</b>	Minimum Alt <b>ME523</b> 1700' (1585')	RNP 0.30 DA(H) <b>500'</b> (385')	Apt Elev 115' Rwy 115'	5200 MSA RW32
	<b>MISSED APCH: Climb to 3000' following the RNAV path to ME854 and hold. Follow ATC instructions.</b> Alt Set: hPa Rwy Elev: 4 hPa Trans level: By ATC Trans alt: 10000' <b>1. SPECIAL AIRCRAFT &amp; AIRCREW AUTHORIZATION REQUIRED. 2. RF required.</b> 3. For uncompensated Baro-VNAV systems, procedure not authorized below 10°C (50°F) or above 54°C (130°F).					



**1** STRAIGHT-IN LANDING RWY 32

RNP 0.30  
DA(H) **500'** (385')

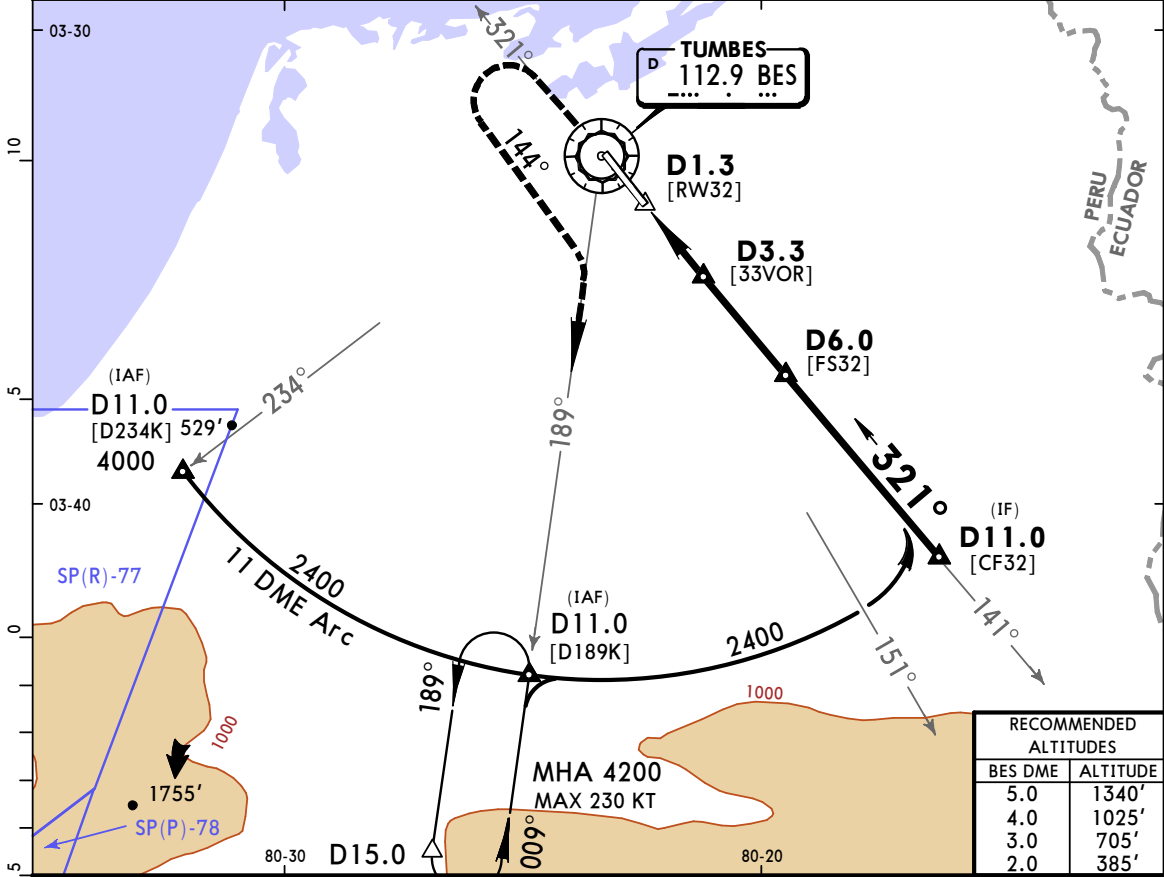
A	NOT APPLICABLE
B	NOT APPLICABLE
C	1900m
D	NOT APPLICABLE

**1** Circling not authorized.

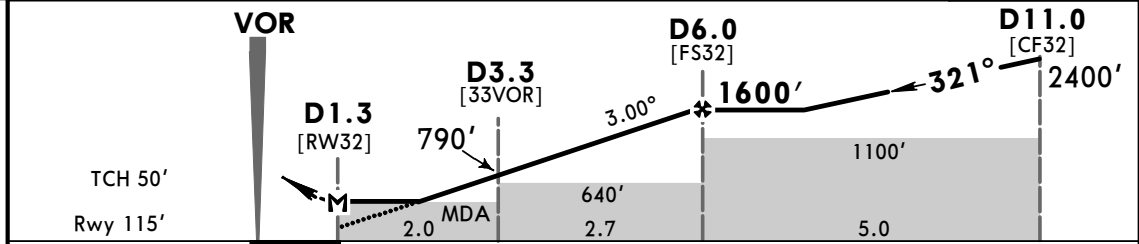
CHANGES: Procedure title, hold bearings, transition altitude.

\*TUMBES Tower  
**126.8**

VOR BES <b>112.9</b>	Final Apch Crs <b>321°</b>	Procedure Alt <b>D6.0</b>	MDA(H) <b>520' (405')</b>	Apt Elev 115' Rwy 115'	
<b>MISSED APCH:</b> Climb outbound on BES VOR R-321, after passing 1500', then turn LEFT (MAX 185 KT). Continue on hdg 144° to intercept BES VOR R-189° and continue to holding at or above 4200'.					
Alt Set: hPa    Rwy Elev: 4 hPa    Trans level: By ATC    Trans alt: 10000' <b>1. DME required.</b> 2. LEFT turn prior to MAP is prohibited.					



RECOMMENDED ALTITUDES	
BES DME	ALTITUDE
5.0	1340'
4.0	1025'
3.0	705'
2.0	385'



Gnd speed-Kts	70	90	100	120	140	160	SALS PAPI 1500' BES <b>112.9</b> R-321
Descent Angle 3.00°	372	478	531	637	743	849	

PANS OPS	STRAIGHT-IN LANDING RWY 32			CIRCLE-TO-LAND		
	MDA(H) <b>520' (405')</b>			MDA(H)		
	ALS out		Max Kts	720'(605') -2.8 km		
	A	1.3 km	1.6 km			
B	1.6 km	2.0 km	135	820'(705') -4.6 km		
C			180			
D			205			