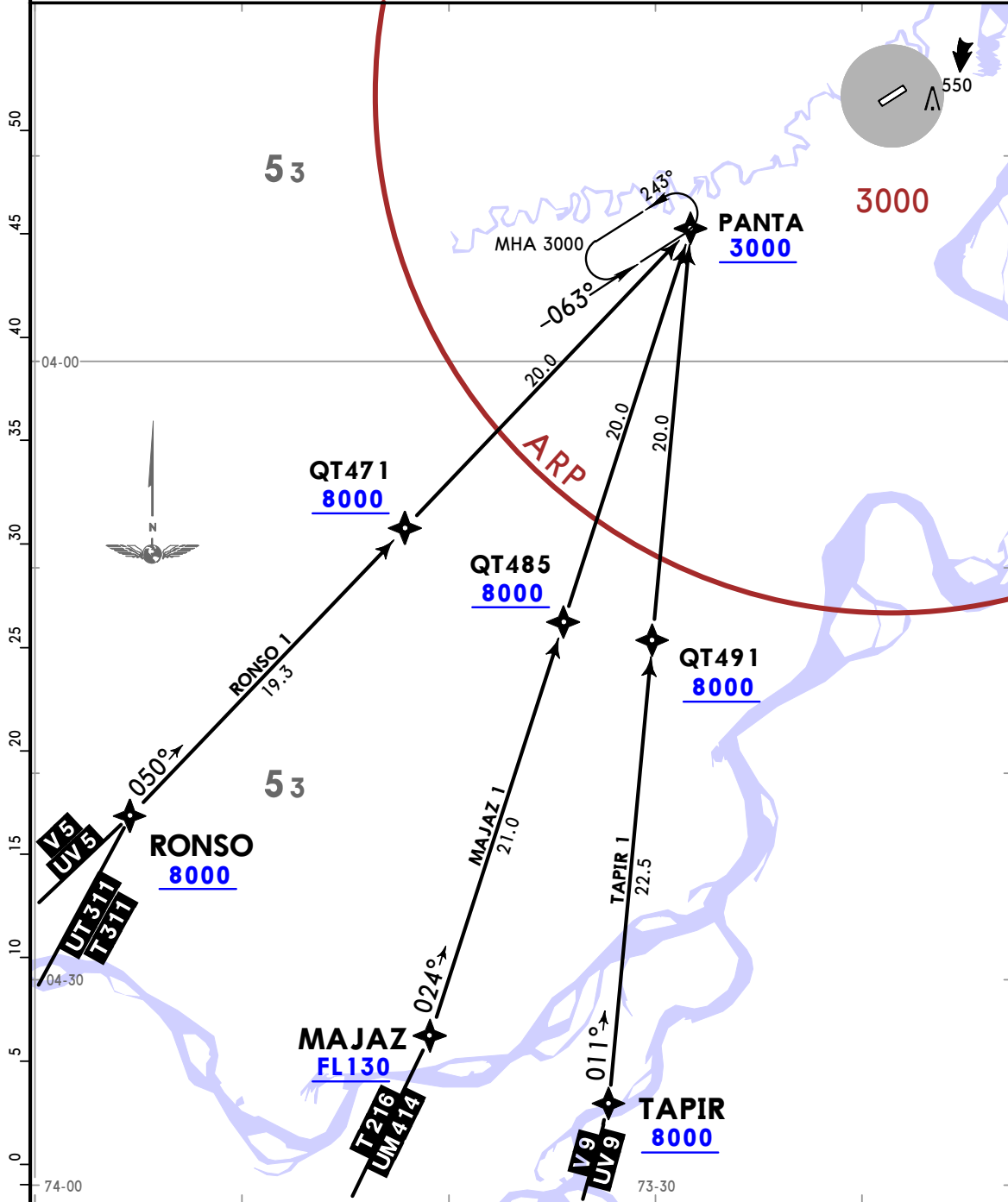


ATIS 132.5	Apt Elev 306	Alt set: hPa Trans level: By ATC 1. RNP 1 or RNAV 1 approval required. 2. GNSS required.
---------------	-----------------	--

MAJAZ 1 [MAJAZ1], RONSO 1 [RONSO1], TAPIR 1 [TAPIR1]
 RNAV ARRIVALS
 (RWY 06)

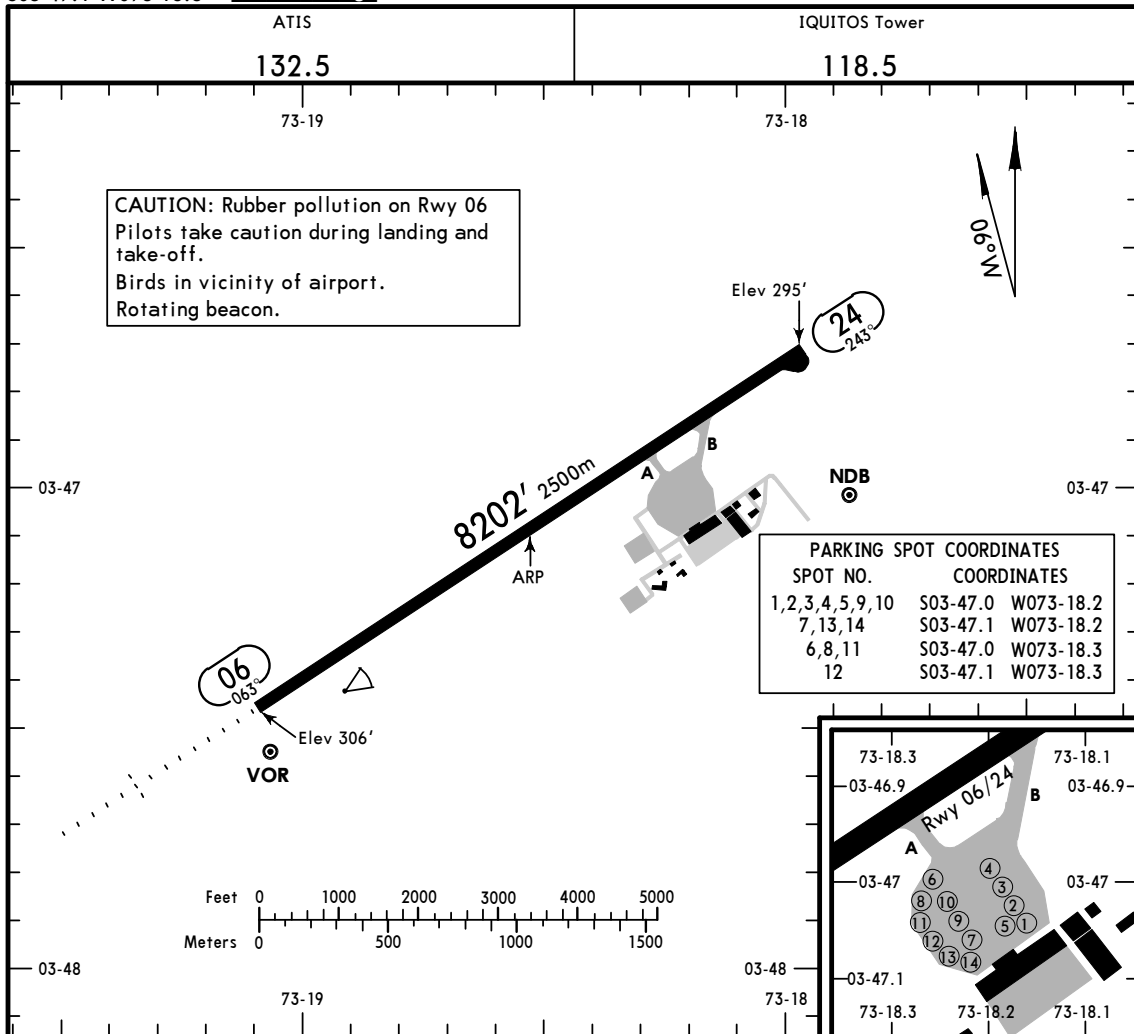


STAR	ROUTING
MAJAZ 1	Descend from routes T-216/UM-414, cross MAJAZ at or above FL130, continue towards PANTA on course 024°.
RONSO 1	Descend from routes V-5/T-311/UV-5, cross RONSO at or above 8000, continue towards PANTA on course 050°.
TAPIR 1	Descend from routes V-9/UV-9, cross TAPIR at or above 8000, continue towards PANTA on course 011°.

SPQT/IQT
 Apt Elev 306'
 S03 47.1 W073 18.5

JEPPESEN
 12 AUG 16
 Eff 18 Aug 10-9

IQUITOS, PERU
 CORONEL FRANCISCO SECADA VIGNETTA INTL



ADDITIONAL RUNWAY INFORMATION

RWY		USABLE LENGTHS			WIDTH
		Threshold	Glide Slope	TAKE-OFF	
06	RL HIALS SFL PAPI-L (angle 3.00°)		7218' 2200m		148'
24	RL PAPI-L (angle 3.00°)				45m

TAKE-OFF

All Rwy's

	Take-Off Alternate Apt. Filed	Take-Off Alternate Apt. Not Filed
1 Eng	1600m or Higher Available Landing Minimums	
2 Eng	1 hr alternate (1 Eng Inop) 1600m	Available Landing Minimums
3 or more Eng	2 hr alternate (1 Eng Inop) 800m	

CHANGES: Taxiway identifiers, parking spots.

© JEPPESEN, 2000, 2016. ALL RIGHTS RESERVED.

SPQT/IQT
CORONEL FRANCISCO
SECADA VIGNETTA INTL

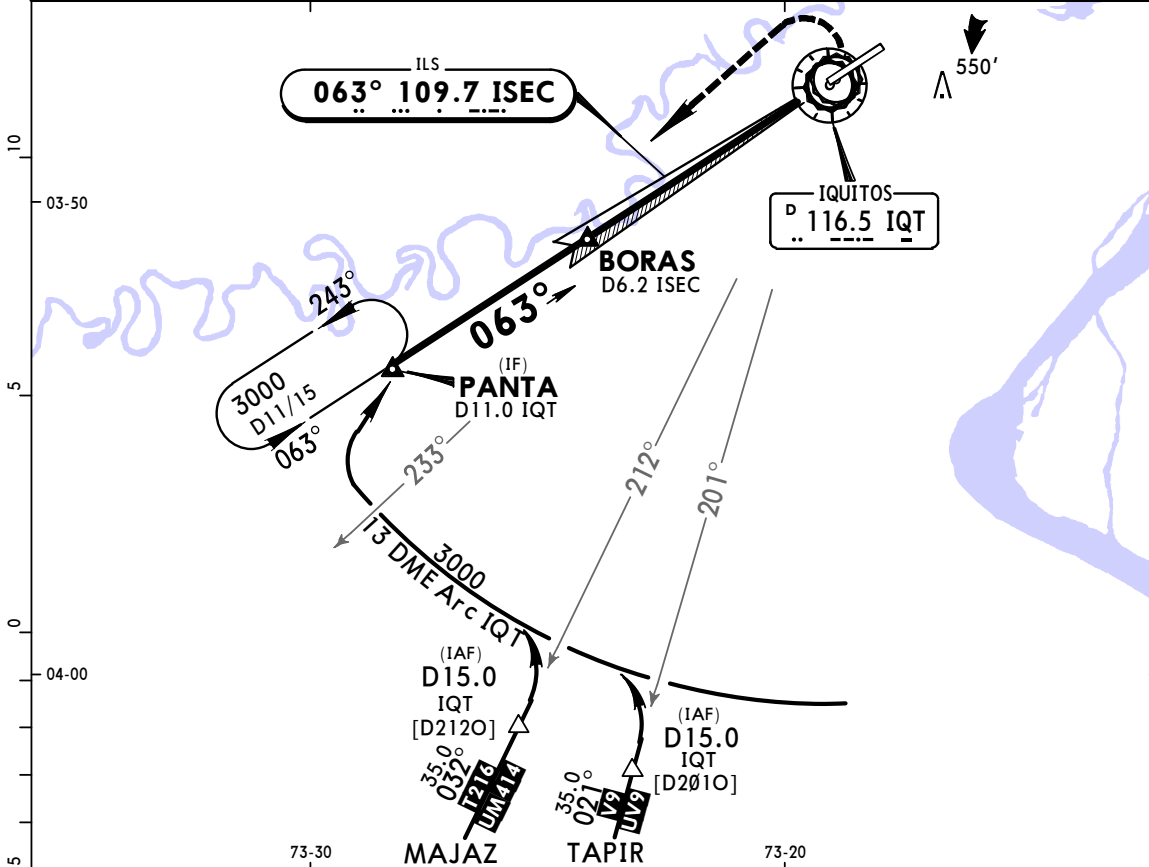
JEPPESEN
1 DEC 17 (11-1) Eff 7 Dec

IQUITOS, PERU

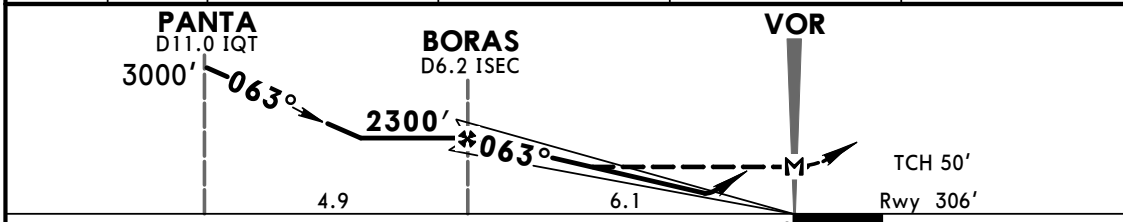
ILS Rwy 06

BRIEFING STRIP™

ATIS 132.5		IQUITOS Approach 124.1		IQUITOS Tower 118.5	
LOC ISEC 109.7	Final Apch Crs 063°	Minimum Alt BORAS 2300' (1994')	ILS DA(H) 570' (264')	Apt Elev 306' Rwy 306'	3000'
MISSED APCH: Climbing LEFT turn to PANTA.					
Alt Set: hPa		Rwy Elev: 11 hPa	Trans level: By ATC	Trans alt: 10000'	MSA IQT VOR



LOC (GS out)	ISEC DME	5.0	4.0	3.0	2.0
	ALTITUDE	1910'	1590'	1270'	950'



Gnd speed-Kts	70	90	100	120	140	160	ALS	PAPI	LT	PANTA
GS	3.00°	372	478	531	637	743				
MAP at VOR										

STRAIGHT-IN LANDING RWY 06				CIRCLE-TO-LAND	
ILS DA(H) 570' (264')		LOC (GS out) MDA(H) 660' (354')		Max Kts	
FULL	ALS out	ALS out	ALS out	MDA(H)	
A				100	850'(544') -3.0 km
B		900m	1600m	135	
C	800m	1200m	1600m	180	1100'(794') -5.0 km
D		1200m		205	

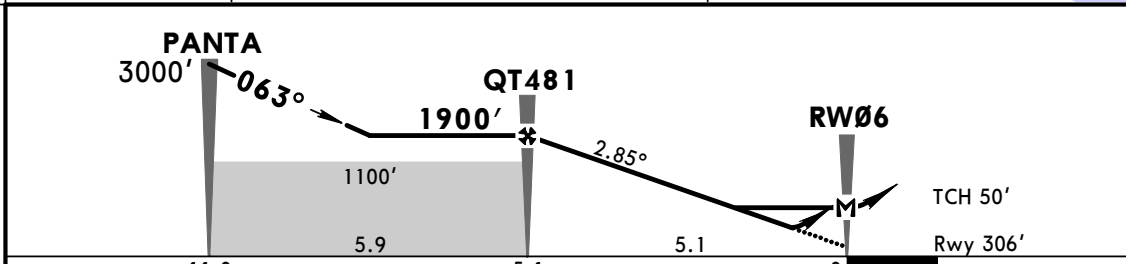
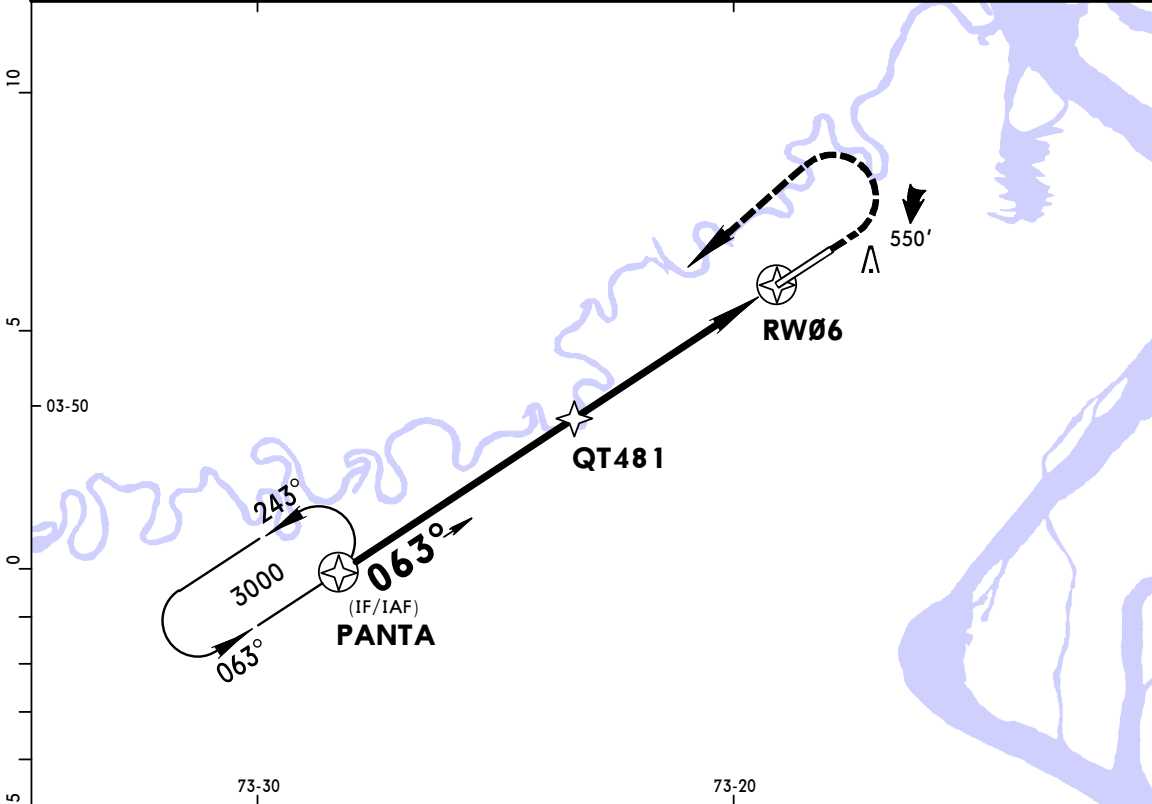
PANS OPS

CHANGES: Transition removed.

© JEPPESEN, 2000, 2017. ALL RIGHTS RESERVED.

SPQT/IQT
CORONEL FRANCISCO
SECADA VIGNETTA INTL

ATIS 132.5		IQUITOS Approach 124.1		IQUITOS Tower 118.5	
RNAV	Final Apch Crs 063°	Procedure Alt QT481 1900' (1594')	LNAV/VNAV DA(H) 600' (294')	Apt Elev 306' Rwy 306'	3000' MSA RW06
MISSED APCH: Climb to 1000' then turn LEFT direct to PANTA climbing to 3000' and hold. Follow ATC instructions.					
Alt Set: hPa Rwy Elev: 11 hPa Trans level: By ATC Trans alt: 10000' 1. For uncompensated Baro-VNAV systems, procedure not authorized below 10°C (50°F) or above 54°C (129°F).					



Gnd speed-Kts	70	90	100	120	140	160	ALS 1000' 3000' PANTA
Descent Angle 2.85°	353	454	504	605	706	807	
LNAV/VNAV: MAP at DA							
LNAV: MAP at RW06							

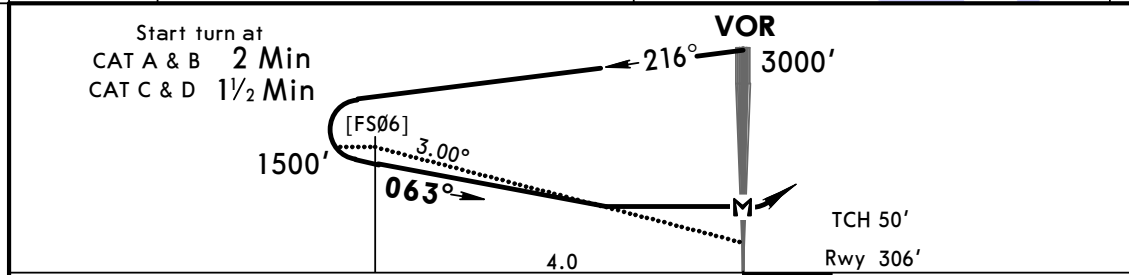
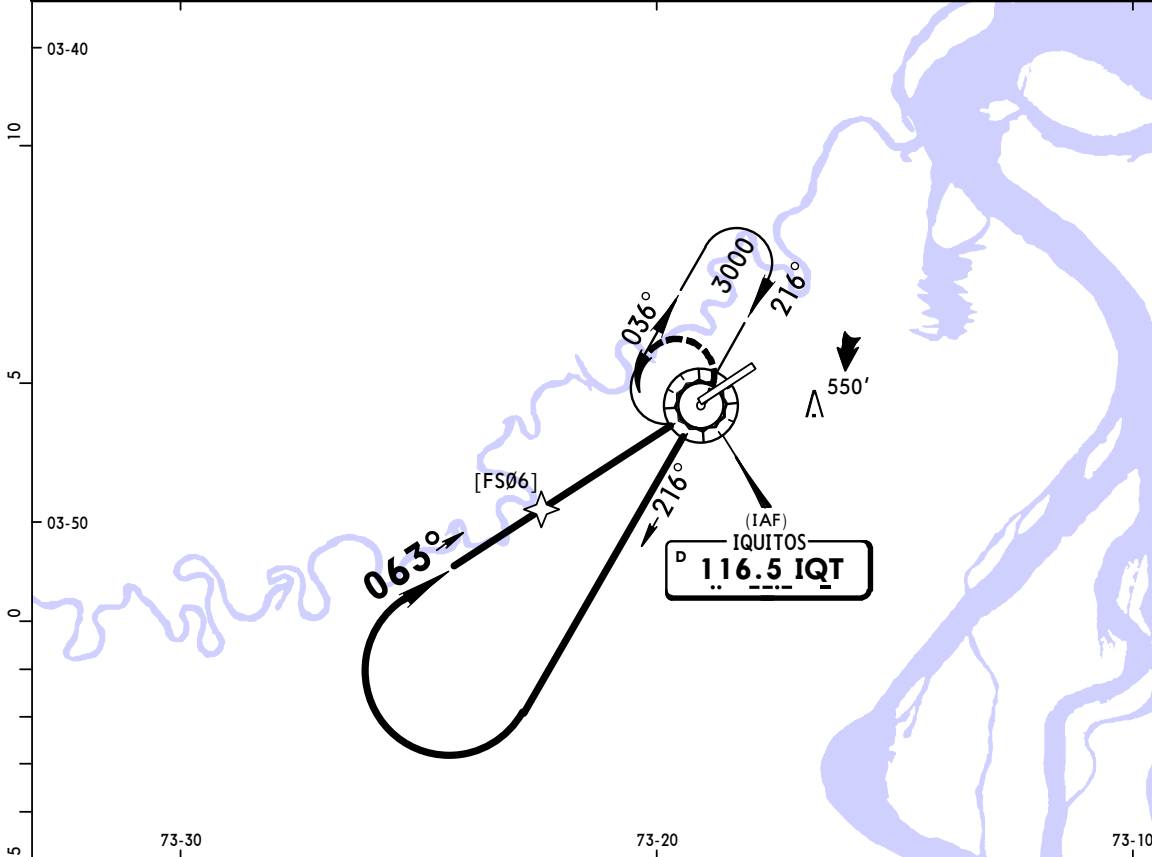
STRAIGHT-IN LANDING RWY06				CIRCLE-TO-LAND	
LNAV/VNAV DA(H) 600' (294')		LNAV MDA(H) 700' (394')		Max Kts	MDA(H)
ALS out		ALS out		100	850'(544') -3.0 km
A				135	
B	800m	1600m	1100m	180	1100'(794') -5.0 km
C			1800m	205	
D	1600m		1600m		

PANS OPS

CHANGES: New procedure.

SPQT/IQT
CORONEL FRANCISCO
SECADA VIGNETTA INTL

ATIS 132.5		IQUITOS Approach 124.1		IQUITOS Tower 118.5	
VOR IQT 116.5	Final Apch Crs 063°	No FAF	MDA(H) 800' (494')	Apt Elev 306' Rwy 306'	3000'
MISSED APCH: Turn LEFT to IQT VOR climbing to 3000'.					
Alt Set: hPa Rwy Elev: 11 hPa Trans level: By ATC Trans alt: 10000' 1. Max IAS 230 kts for holding, 185 kts for base leg.					
					MSA IQT VOR



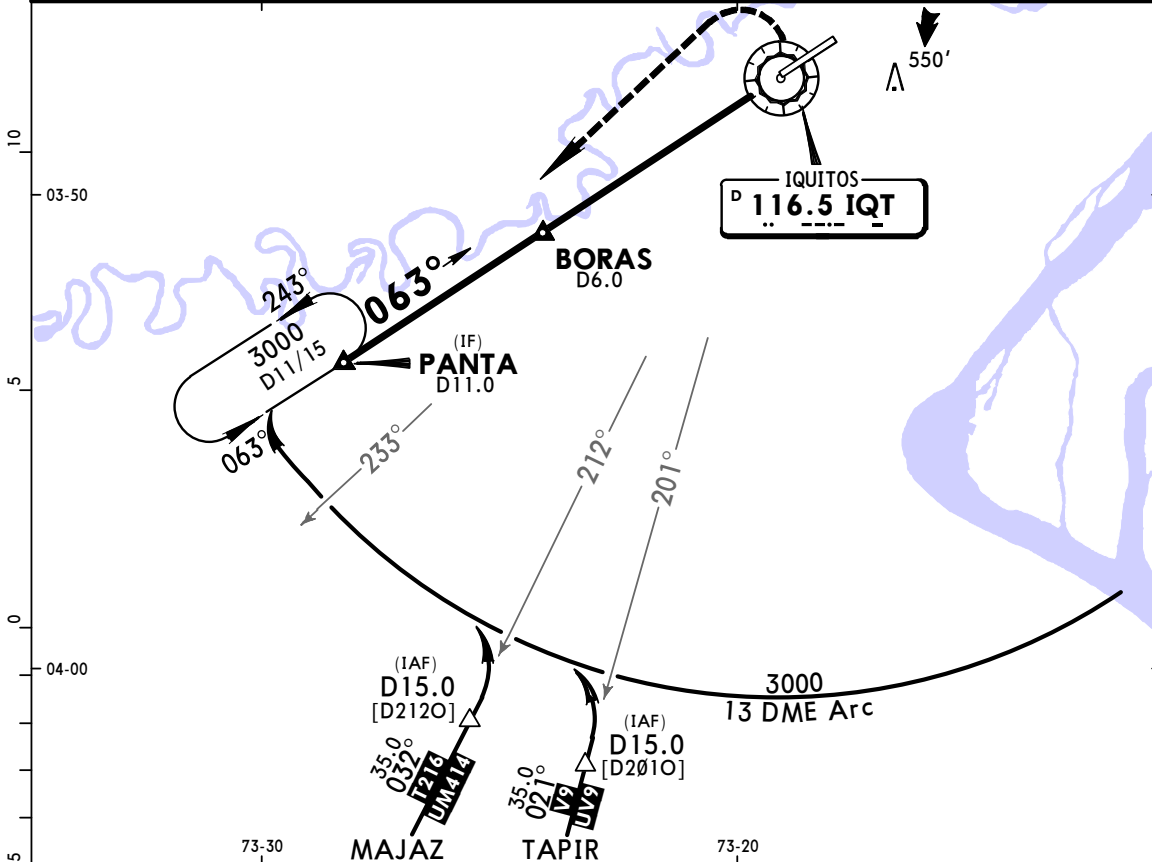
Gnd speed-Kts	70	90	100	120	140	160	ALS 3000'	IQT 116.5
Descent Angle 3.00°	372	478	531	637	743	849		
MAP at VOR							PAPI	LT

STRAIGHT-IN LANDING RWY06			CIRCLE-TO-LAND		
MDA(H) 800' (494')			MDA(H)		
ALS out			Max Kts		
A			100	850' (544') -3.0 km	
B			135		
C	1.6 km	2.3 km	180	1100' (794') -5.0 km	
D			205		

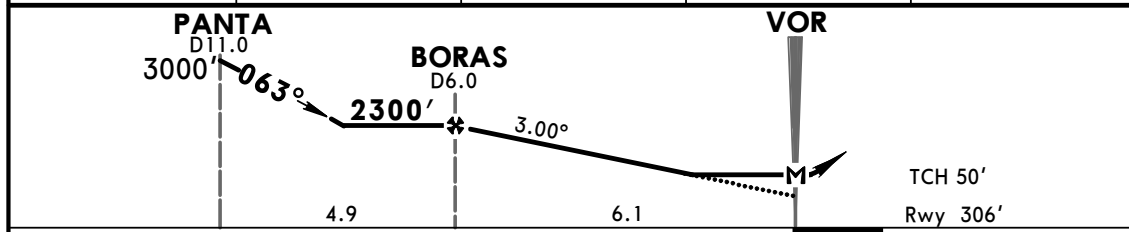
PANS OPS

SPQT/IQT
CORONEL FRANCISCO
SECADA VIGNETTA INTL

ATIS 132.5		IQUITOS Approach 124.1			IQUITOS Tower 118.5	
VOR IQT 116.5	Final Apch Crs 063°	Minimum Alt BORAS 2300' (1994')	MDA(H) 800' (494')	Apt Elev 306' Rwy 306'	3000' MSA IQT VOR	
MISSED APCH: Climbing LEFT turn to PANTA.						
Alt Set: hPa		Rwy Elev: 11 hPa	Trans level: By ATC		Trans alt: 10000'	
1. DME Required						



IQT DME	5.0	4.0	3.0	2.0
ALTITUDE	1960'	1640'	1320'	1000'

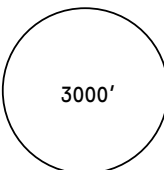


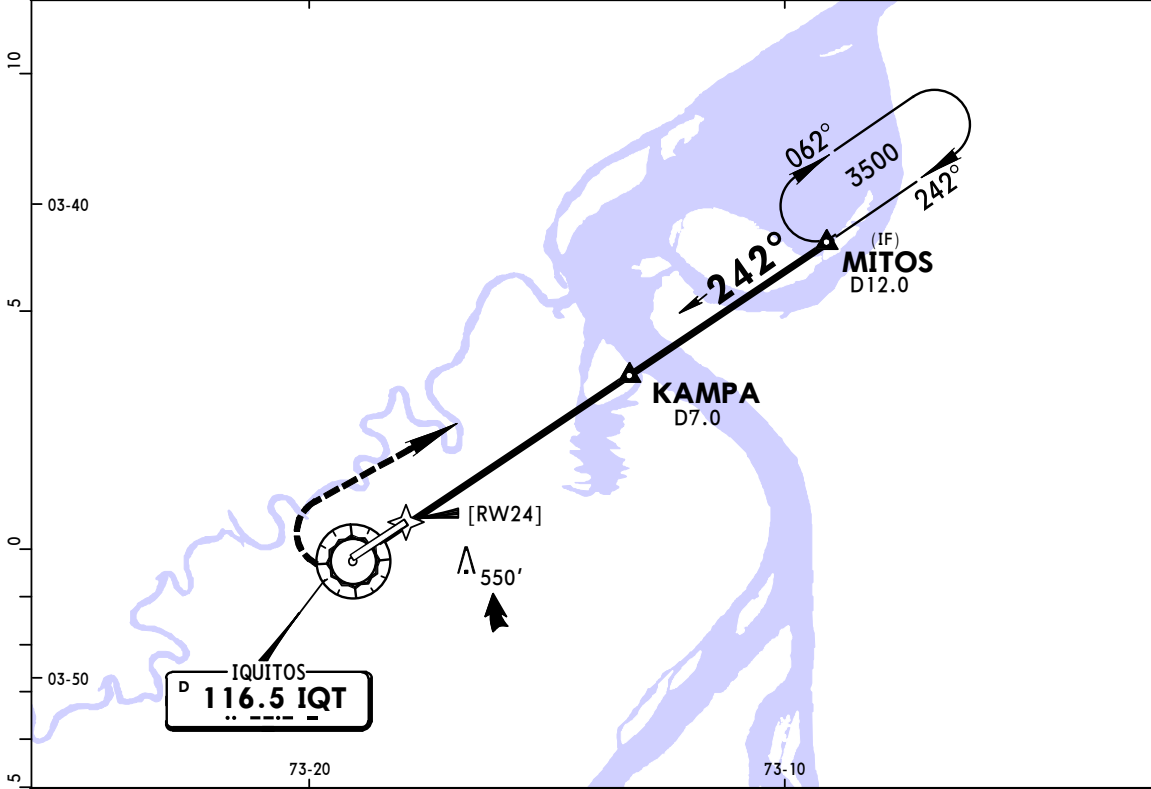
Gnd speed-Kts	70	90	100	120	140	160	ALS PAPI LT PANTA
Descent Angle	3.00°	372	478	531	637	743	
MAP at VOR							

STRAIGHT-IN LANDING RWY 06 MDA(H) 800' (494')			CIRCLE-TO-LAND		
ALS out			Max Kts	MDA(H)	
A	1.6 km	2.3 km	100	850' (544') -3.0 km	
B			135		
C			180	1100' (794') -5.0 km	
D			205		

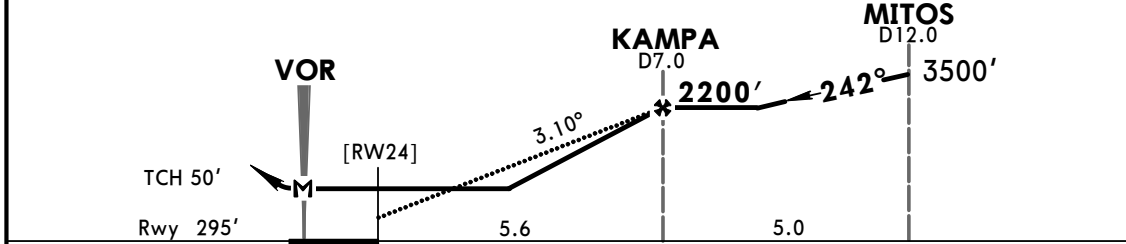
PANS OPS


CHANGES: Transition removed.

BRIEFING STRIP™	ATIS 132.5		IQUITOS Approach 124.1		IQUITOS Tower 118.5	
	VOR IQT 116.5	Final Apch Crs 242°	Minimum Alt KAMPA 2200' (1905')	MDA(H) 800' (505')	Apt Elev 306' Rwy 295'	 3000' MSA IQT VOR
	MISSED APCH: Climbing RIGHT turn to MITOS.					
Alt Set hPa		Rwy Elev: 11 hPa	Trans level: By ATC		Trans alt: 10000'	
1. DME Required.						



IQT DME	3.0	4.0	5.0	6.0
ALTITUDE	880'	1200'	1520'	1840'



Gnd speed-Kts	70	90	100	120	140	160	PAPI-L		MITOS
Descent Angle	3.10°	384	494	548	658	768			
MAP at VOR									

STRAIGHT-IN LANDING RWY24		CIRCLE-TO-LAND	
MDA(H) 800' (505')		MDA(H) _____	
A	2.3 km	Max Kts	
B		100	850'(544') -3.0 km
C		135	
D		180	1100'(794') -5.0 km
		205	

PANS OPS