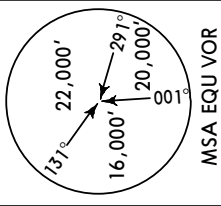
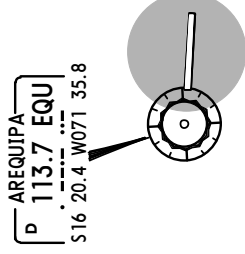


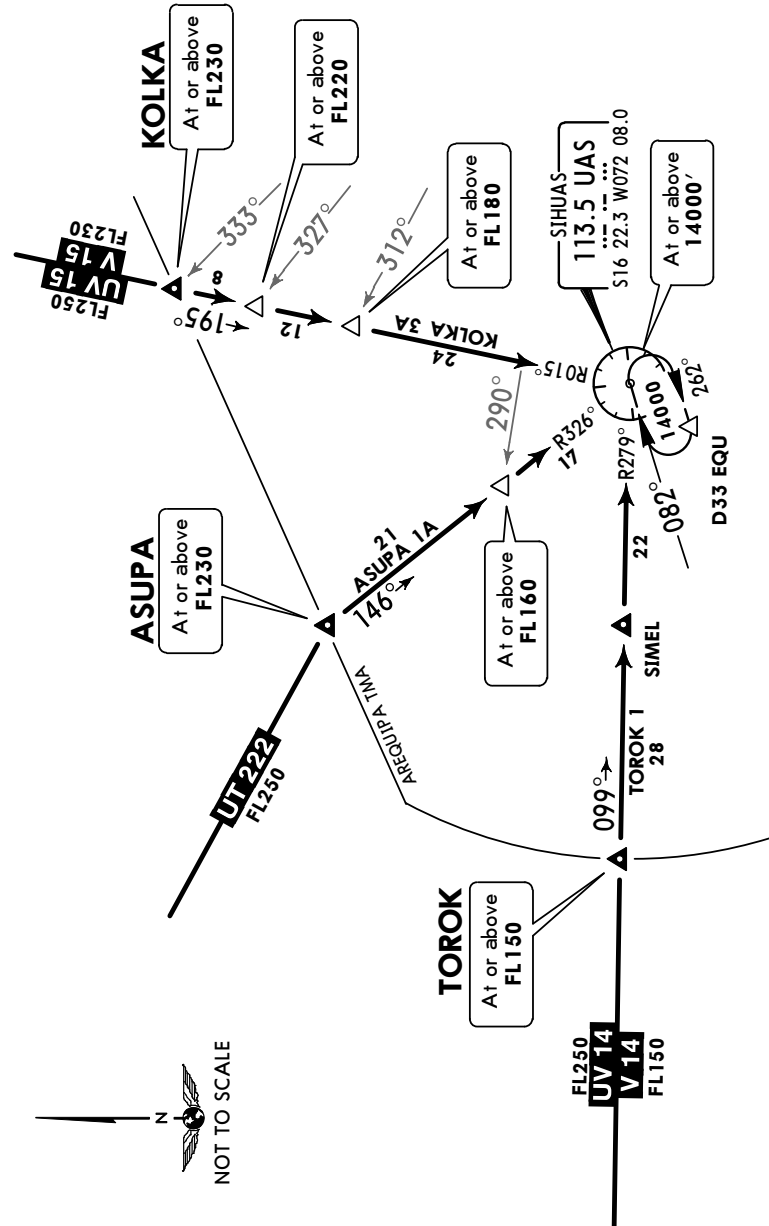
ATIS <b>130.9</b>	Apt Elev <b>8405'</b>	Alt Set: hPa Trans level: By ATC Trans alt: 14000'
----------------------	--------------------------	----------------------------------------------------



**ASUPA 1A [ASUP1A], KOLKA 3A [KOLK3A]  
TOROK 1 [TOROK1] ARRIVALS  
(RWY 10)**



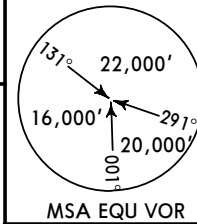
STAR	ROUTING
<b>ASUPA 1A</b>	Descend from route UT-222 to ASUPA. Proceed on UAS R-326 (heading 146°) to UAS VOR and hold. Proceed in accordance with ATC authorization.
<b>KOLKA 3A</b>	Descend from routes V-15/UV-15 to KOLKA. Proceed on UAS R-015 (heading 195°) to UAS VOR and hold. Proceed in accordance with ATC authorization.
<b>TOROK 1</b>	Descend from routes V-14/UV-14 to TOROK. Proceed on UAS R-279 (heading 099°) to UAS VOR and hold. Proceed in accordance with ATC authorization.



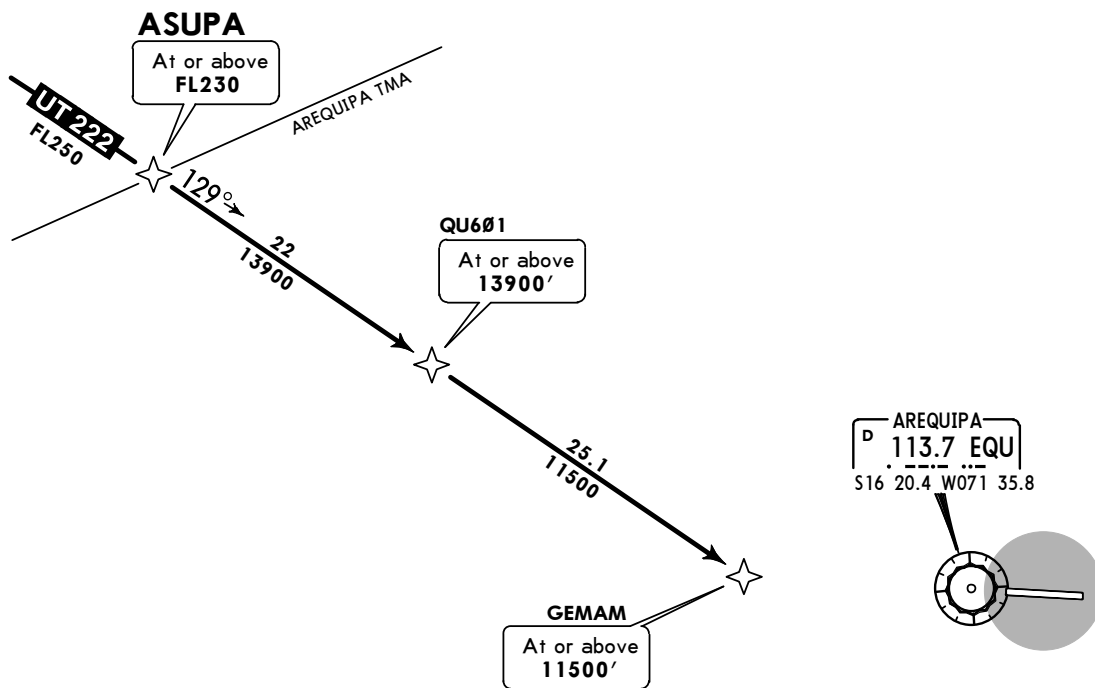
ATIS  
130.9

Apt Elev  
8405'

Alt Set: hPa  
Trans level: By ATC Trans alt: 14000'  
1. GNSS required. 2. RNP 1 approval required.



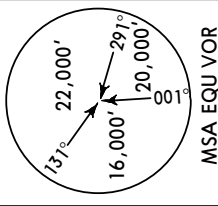
**ASUPA 1B RNAV ARRIVAL [ASUP1B]  
(RWY 10)**



**ROUTING**

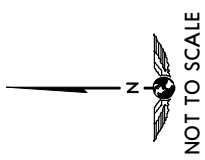
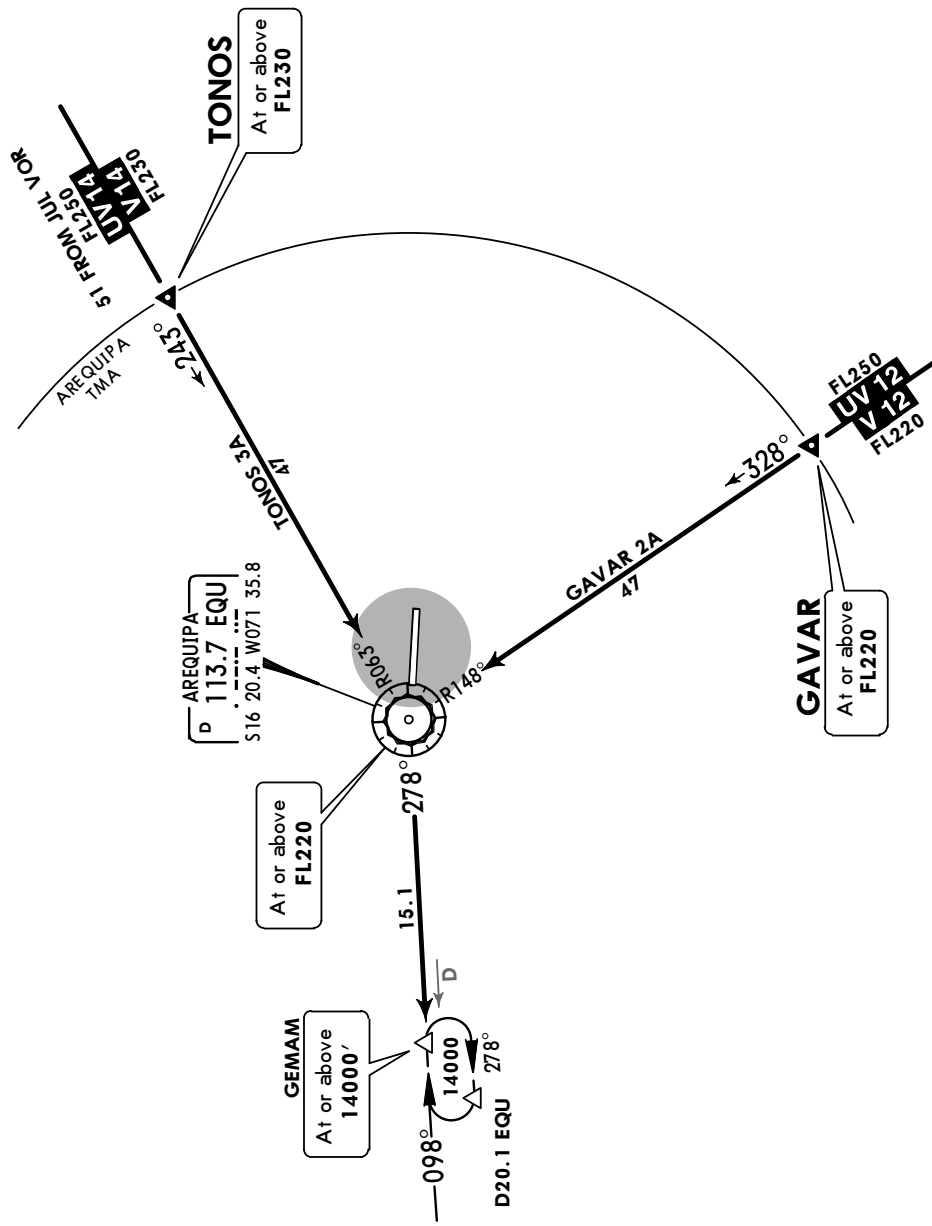
Descend from route UT-222, cross ASUPA at or above FL230. Proceed direct to QU601, direct to GEMAM in accordance with ATC authorization.

ATIS <b>130.9</b>	Apt Elev <b>8405'</b>	Alt Set: hPa Trans level: By ATC Trans alt: 14000'
----------------------	--------------------------	----------------------------------------------------



**GAVAR 2A [GAVA2A], TONOS 3A [TONO3A]  
ARRIVALS  
(RWY 10)**

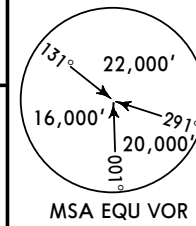
STAR	ROUTING
<b>GAVAR 2A</b>	Descend from routes V-12/UV-12 to GAVAR. Proceed on EQU R-148 (heading 328°) to EQU VOR. Continue on EQU R-278 to hold at GEMAM. Continue in accordance with ATC authorization.
<b>TONOS 3A</b>	Descend from routes V-14/UV-14 to TONOS. Proceed on EQU R-063 (heading 243°) to EQU VOR. Continue on EQU R-278 to hold at GEMAM. Continue in accordance with ATC authorization.



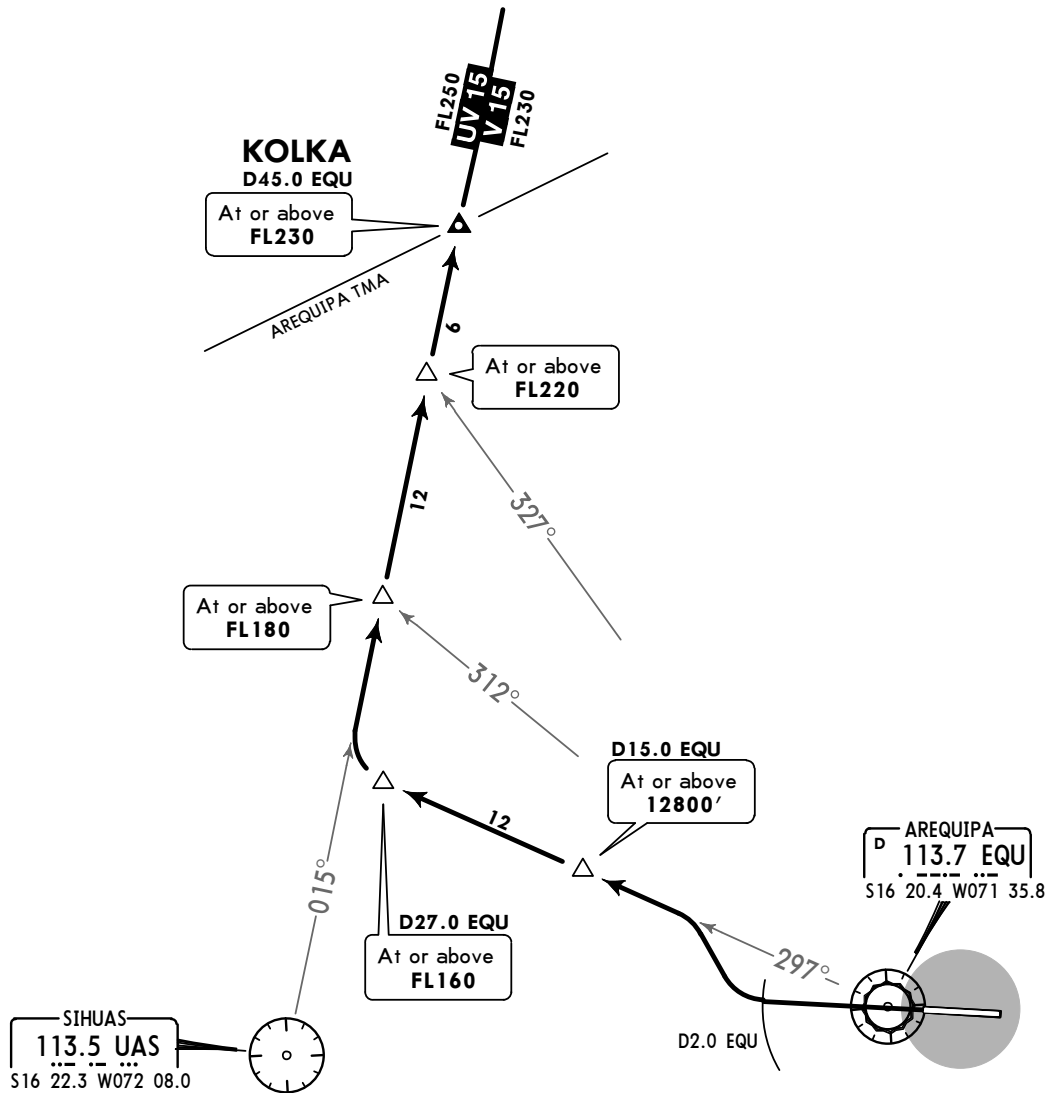


Apt Elev  
8405'

Trans level: By ATC Trans alt: 14000'



**KOLKA 3F DEPARTURE**  
[KOLK3F]  
(RWY 28)

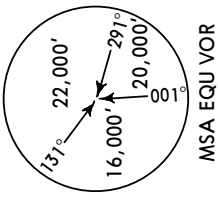


**INITIAL CLIMB**

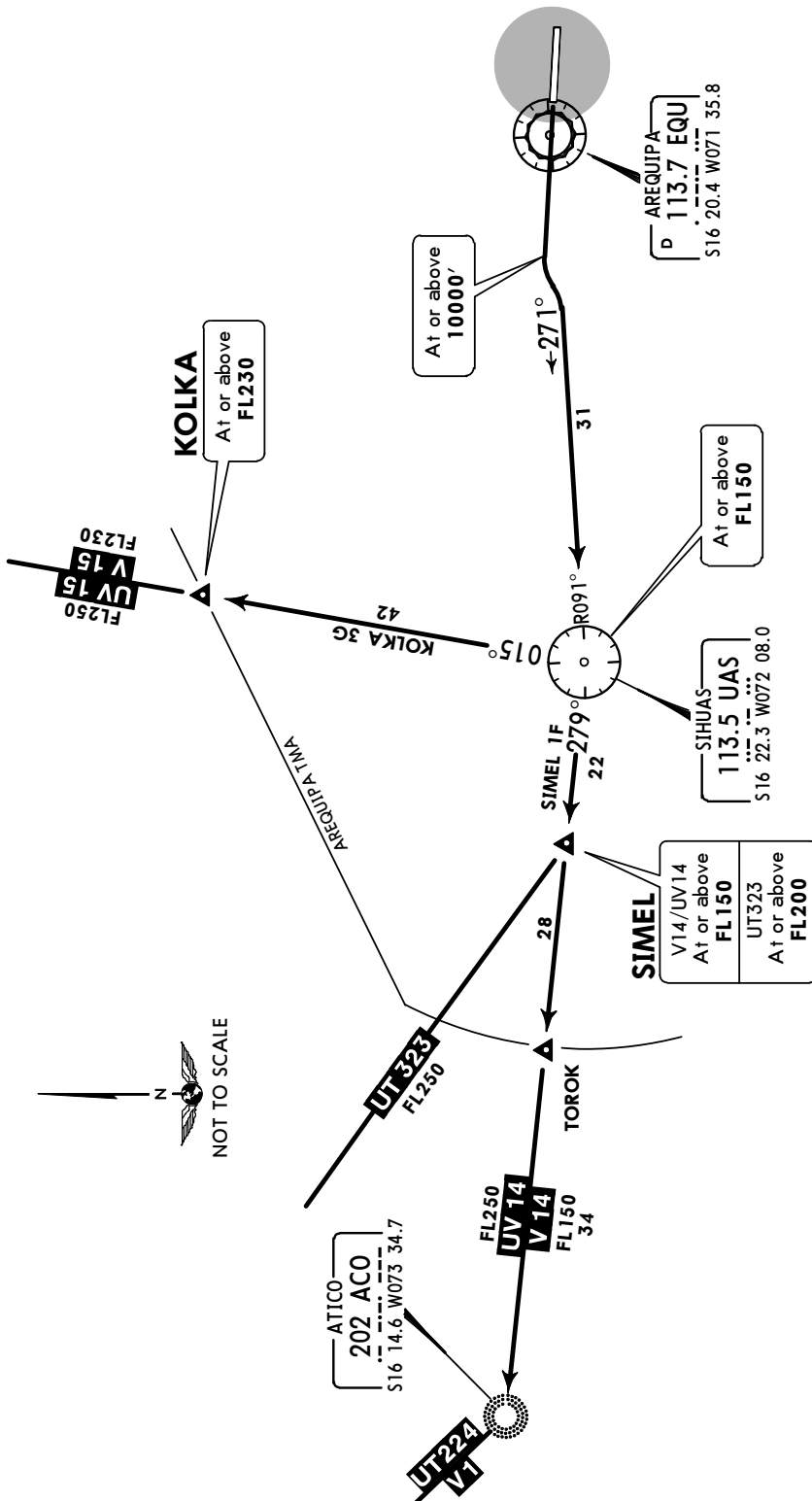
Climb on runway heading until D2.0 EQU, turn RIGHT to proceed on EQU R-297. At D27.0 EQU turn RIGHT to proceed on UAS R-015 to KOLKA. Continue climbing on routes V-15/UV-15.

Apt Elev  
8405'

Trans level: By ATC Trans alt: 14000'



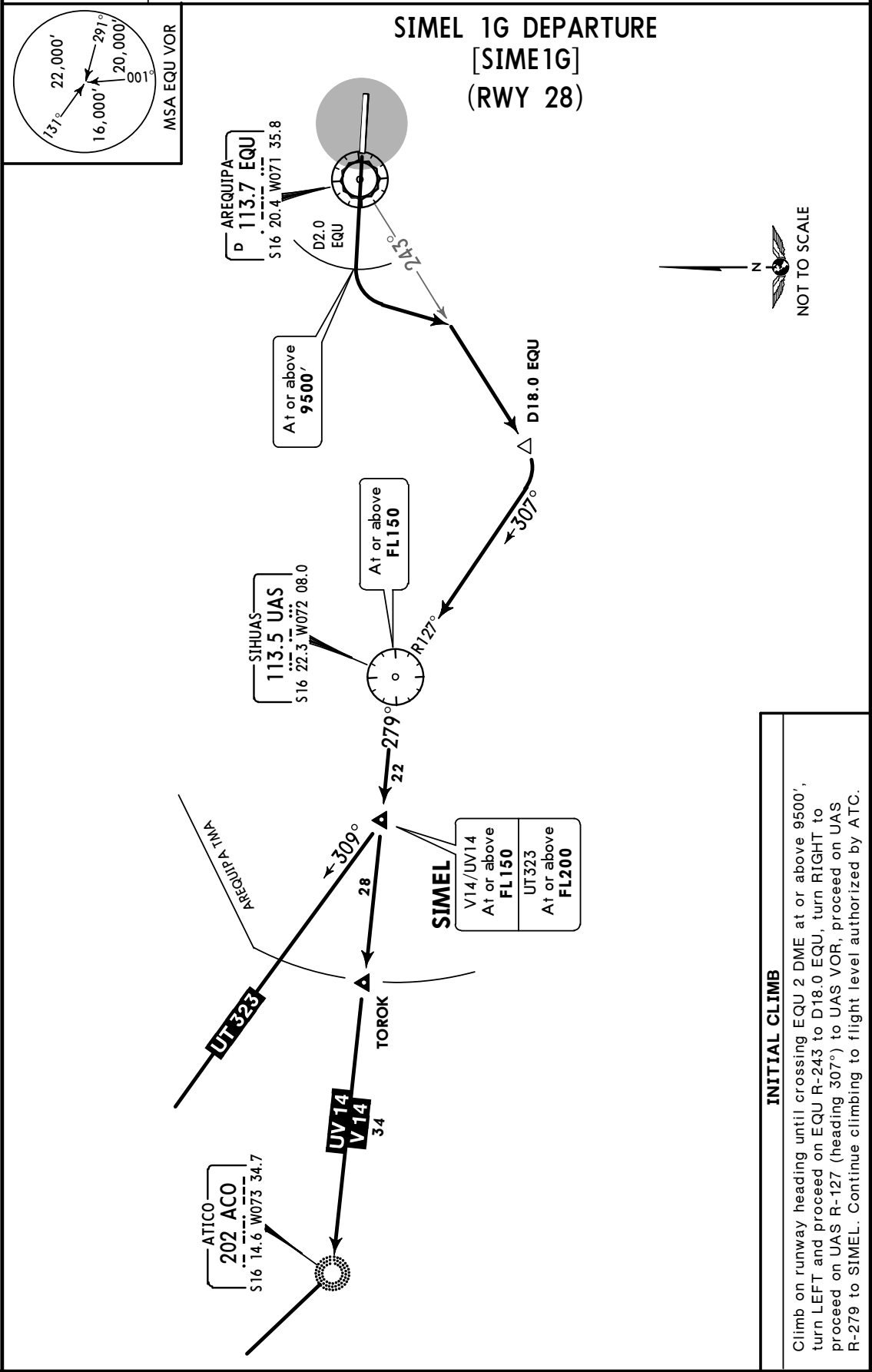
**KOLKA 3G [KOLK3G]  
SIMEL 1F [SIME1F]  
DEPARTURES  
(RWY 28)**



SID	INITIAL CLIMB
<b>KOLKA 3G</b>	Climb on runway heading until crossing 10000', turn LEFT and proceed on UAS R-091 to UAS VOR, intercept UAS R-015 to KOLKA, intercept ATC route.
<b>SIMEL 1F</b>	Climb on runway heading until crossing 10000', turn LEFT and proceed on UAS R-091 to UAS VOR, intercept UAS R-279 to SIMEL. Continue climb as authorized by ATC.

Apt Elev  
8405'

Trans level: By ATC Trans alt: 14000'

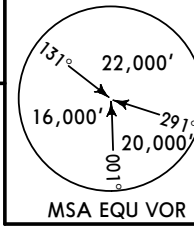


**INITIAL CLIMB**

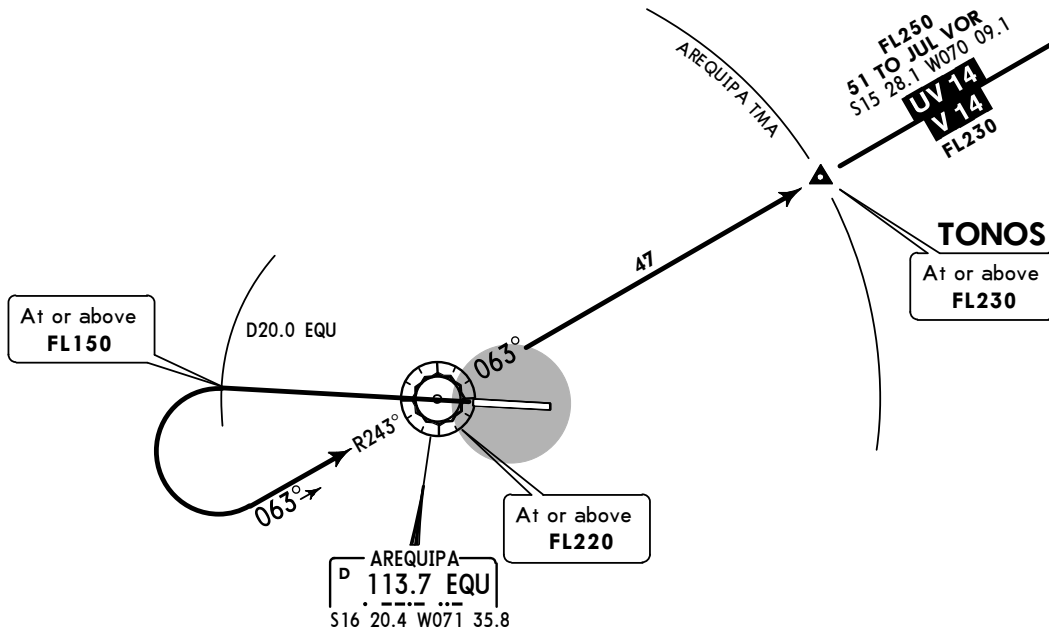
Climb on runway heading until crossing EQU 2 DME at or above 9500', turn LEFT and proceed on EQU R-243 to D18.0 EQU, turn RIGHT to proceed on UAS R-127 (heading 307°) to UAS VOR, proceed on UAS R-279 to SIMEL. Continue climbing to flight level authorized by ATC.

Apt Elev  
8405'

Trans level: By ATC Trans alt: 14000'



**TONOS 3F DEPARTURE**  
[TONO3F]  
(RWY 28)

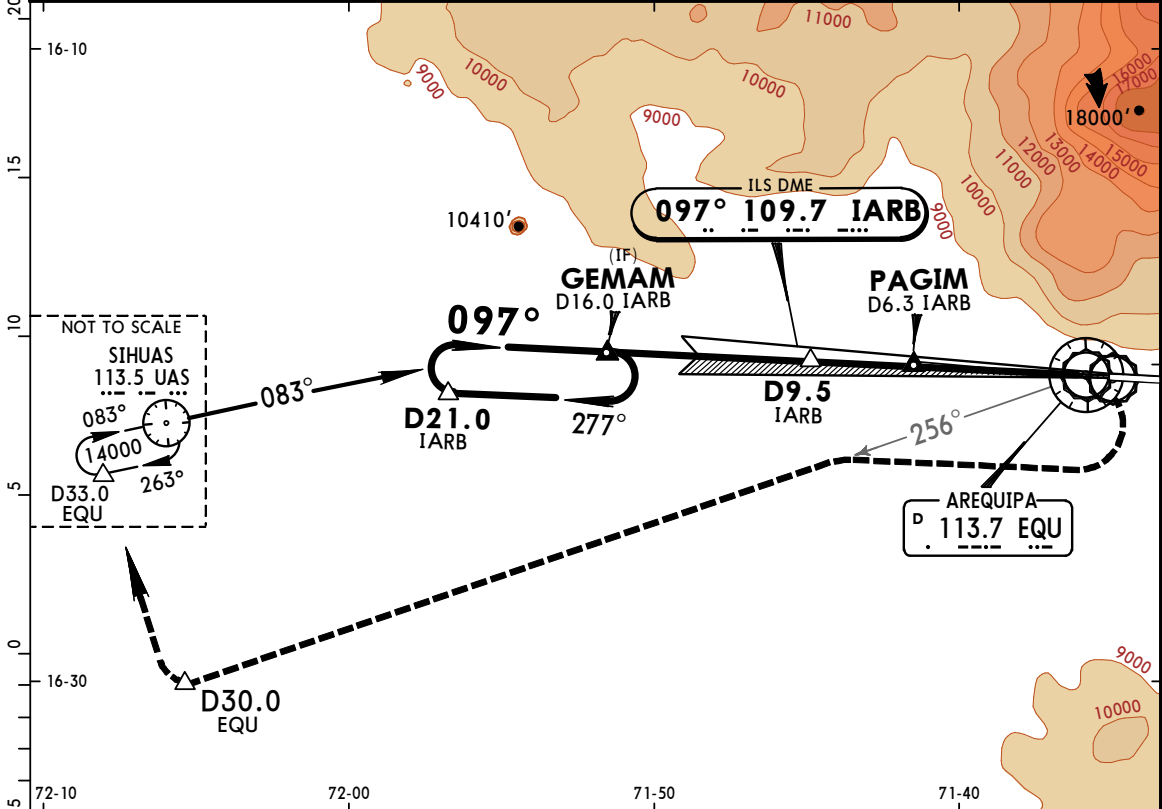


**INITIAL CLIMB**

Climb on runway heading until crossing D20.0 EQU at or above FL150, turn LEFT to proceed on EQU R-243 (heading 063°) to EQU VOR. Continue on EQU R-063 to TONOS. Continue climbing on routes V-14/UV-14.



ATIS 130.9		AREQUIPA Approach 118.7		AREQUIPA Tower 118.7		Ground 121.9	
LOC IARB 109.7	Final Apch Crs 097°	GS PAGIM 10270' (2000')	MDA(H) Refer to Minimums	Apt Elev 8400' Rwy 8270'		<p>MSA EQU VOR</p>	
<p><b>MISSED APCH:</b> Turn RIGHT climbing to intercept and track EQU VOR R-256 to D30.0 EQU, then turn to UAS VOR and hold.</p> <p>MAX IAS: Cat B-150 KT, Cat C-185 KT.</p> <p>Alt Set: hPa Rwy Elev: 268 hPa Trans level: By ATC Trans alt: 14000'</p> <p>1. DME required. 2. CAUTION: High terrain North of airport. 3. Circle-to-land MAX IAS 180 KT.</p>							



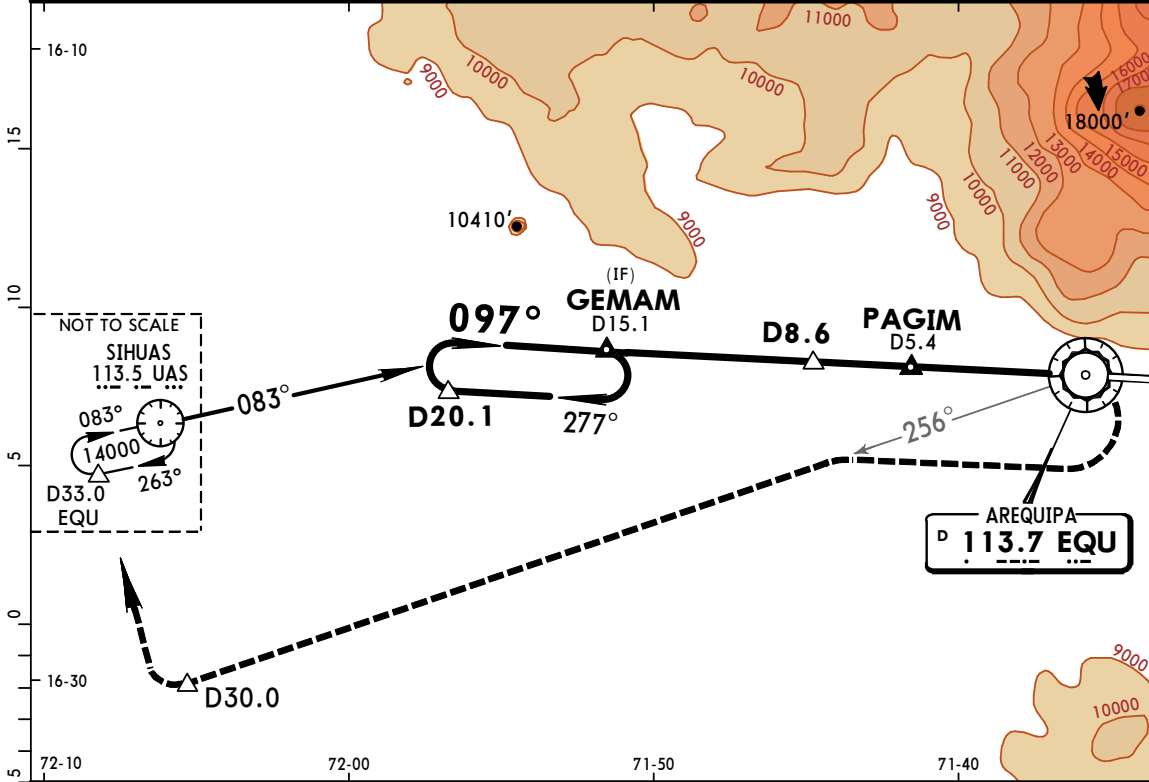
LOC (GS out)	IARB DME	4.0	3.0	2.0
	ALTITUDE	9545'	9225'	8905'
D21.0 IARB	GEMAM D16.0 IARB	D9.5 IARB	PAGIM D6.3 IARB GS 10270'	VOR
097° ← 277°				
097° ← 14000'				
097° ← 11500'				
		10270'	*097°	
		6.5	3.2	5.4
				0.7
				TCH 52'
				Rwy 8270'

Gnd speed-Kts	70	90	100	120	140	160	PAPI SALSF	RT	EQU 113.7 R-256	D30.0 EQU
GS	3.00°	372	478	531	637	849				
MAP at VOR										

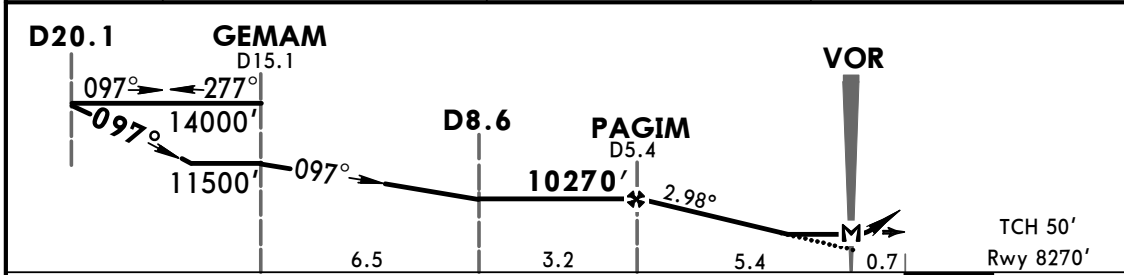
STRAIGHT-IN LANDING RWY 10				CIRCLE-TO-LAND			
ILS		LOC (GS out)		DAY		NIGHT	
DA(H) A, B: 8520' (250')		A, B: 8640' (370')		Not Authorized North of Airport			
C: 8530' (260')		C: 8660' (390')		DAY		NIGHT	
FULL		ALS out		MDA(H)			
A				Max Kts.			
B	900m	1200m	1.6 km	100	9800' (1400') -5.5 km		
C				135			
D	NOT APPLICABLE	NOT APPLICABLE	NOT APPLICABLE	180	10140' (1740') -7.0 km		NA
				D	NOT APPLICABLE		

PANS OPS

ATIS <b>130.9</b>		AREQUIPA Approach <b>118.7</b>		AREQUIPA Tower <b>118.7</b>		Ground <b>121.9</b>
VOR EQU <b>113.7</b>	Final Apch Crs <b>097°</b>	Minimum Alt <b>PAGIM</b> <b>10270'</b> (2000')	MDA(H) Refer to Minimums	Apt Elev 8400' Rwy 8270'		
<b>MISSED APCH:</b> Turn RIGHT climbing to intercept and track EQU VOR R-256 to D30.0 EQU, then turn to UAS VOR and hold. <b>MAX IAS:</b> Cat B-150 KT, Cat C-185 KT. Alt Set: hPa    Rwy Elev: 268 hPa    Trans level: By ATC    Trans alt: 14000' <b>1. DME required.</b> 2. CAUTION: High terrain North of airport.    3. Circle-to-land MAX IAS 180 KT.						



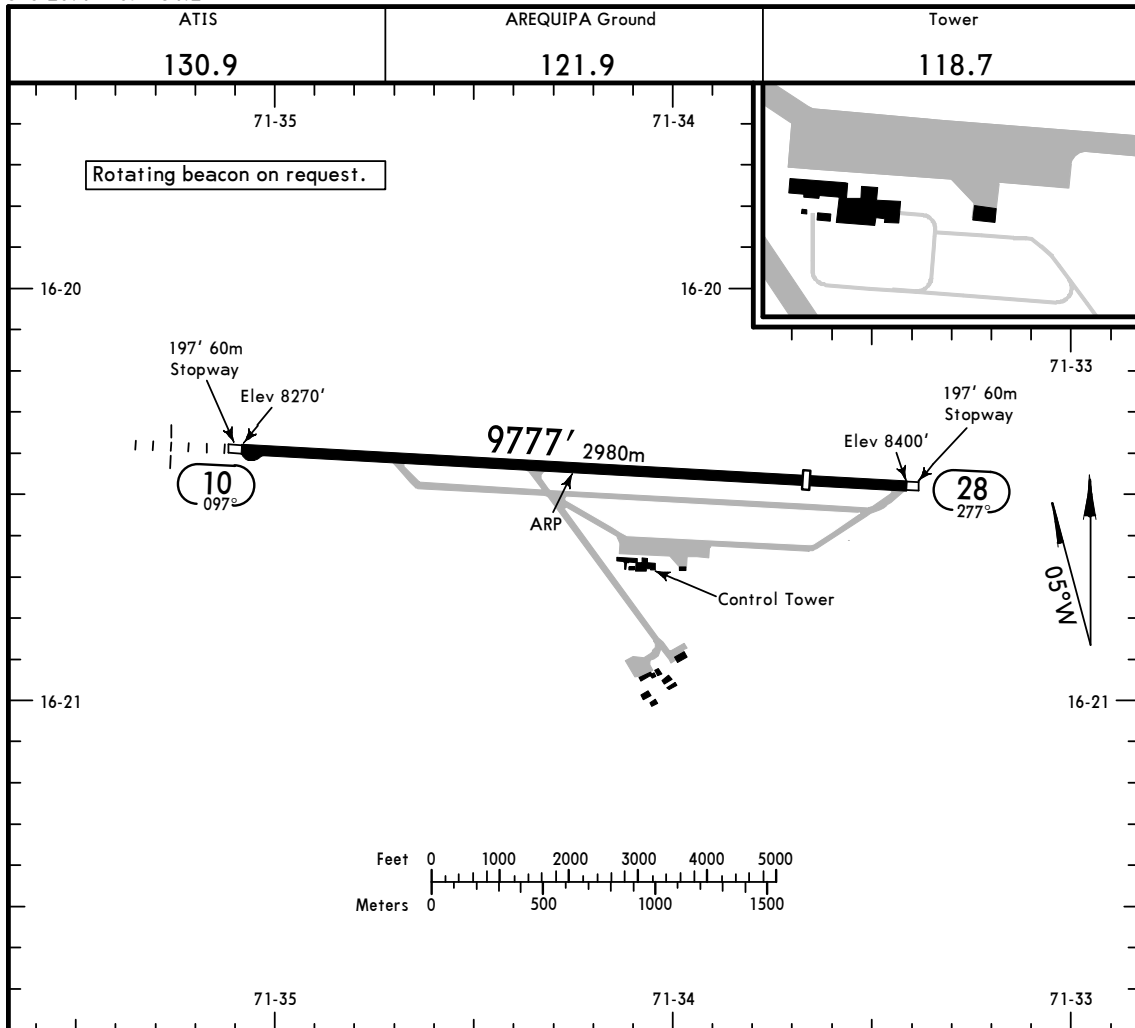
EQU DME	3.1	2.1	1.1
ALTITUDE	9540'	9220'	8900'



Gnd speed-Kts	70	90	100	120	140	160	PAPI SALSF	RT	EQU <b>113.7</b> <b>R-256</b>	D30.0
Descent Angle	2.98°	369	474	527	633	738				
MAP at VOR										

STRAIGHT-IN LANDING RWY 10					CIRCLE-TO-LAND				
MDA(H) A, B: <b>8730'</b> (460')					Not Authorized North of Airport				
C: <b>8760'</b> (490')					DAY				
ALS out					NIGHT				
A					Max Kts				
B	1.6 km				100	9800' (1400') -5.5 km			
C					135	10140' (1740') -7.0 km			
D	NOT APPLICABLE				180	NA			
					D	NOT APPLICABLE			

PANS OPS



**ADDITIONAL RUNWAY INFORMATION**

RWY		USABLE LENGTHS		TAKE-OFF	WIDTH
		Threshold	Glide Slope		
10	Flare pots (Emerg. only) <b>①</b> RL SALSF PAPI (angle 3.0°)		9023' 2750m		148'
28	Flare pots (Emerg. only) <b>①</b> RL PAPI (angle 3.3°)	8301' 2530m			45m

**①** 8301' (2530m) in length.

**TAKE-OFF**

**All Rwys**

	Take-Off Alternate Apt. Filed	Take-Off Alternate Apt. Not Filed
1 Eng	1600m or Higher Available Landing Minimums	
2 Eng	1 hr alternate (1 Eng Inop) 1600m	Available Landing Minimums
3 or more Eng	2 hr alternate (1 Eng Inop) 800m	