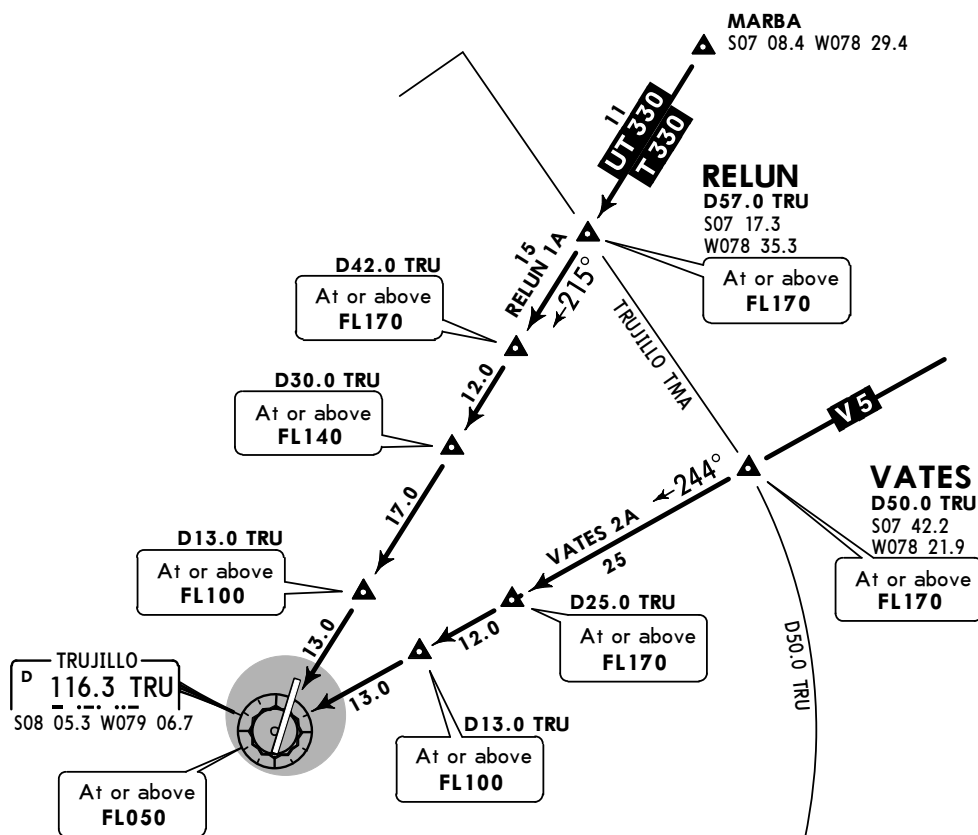


Apt Elev  
128'

Alt set: hPa Trans level: By ATC Trans alt: 4500'

RELUN 1A [RELU1A]  
VATES 2A [VATE2A]  
ARRIVALS

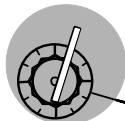


STAR	ROUTING
RELUN 1A	Descend on route to cross RELUN at or above FL170, D42.0 TRU at or above FL170, D30.0 TRU at or above FL140, D13.0 TRU at or above FL100, TRU VOR at or above FL050 and continue according to ATC instructions.
VATES 2A	Descend on route to cross VATES at or above FL170, D25.0 TRU at or above FL170, D13.0 TRU at or above FL100, TRU VOR at or above FL050 and continue according to ATC instructions.

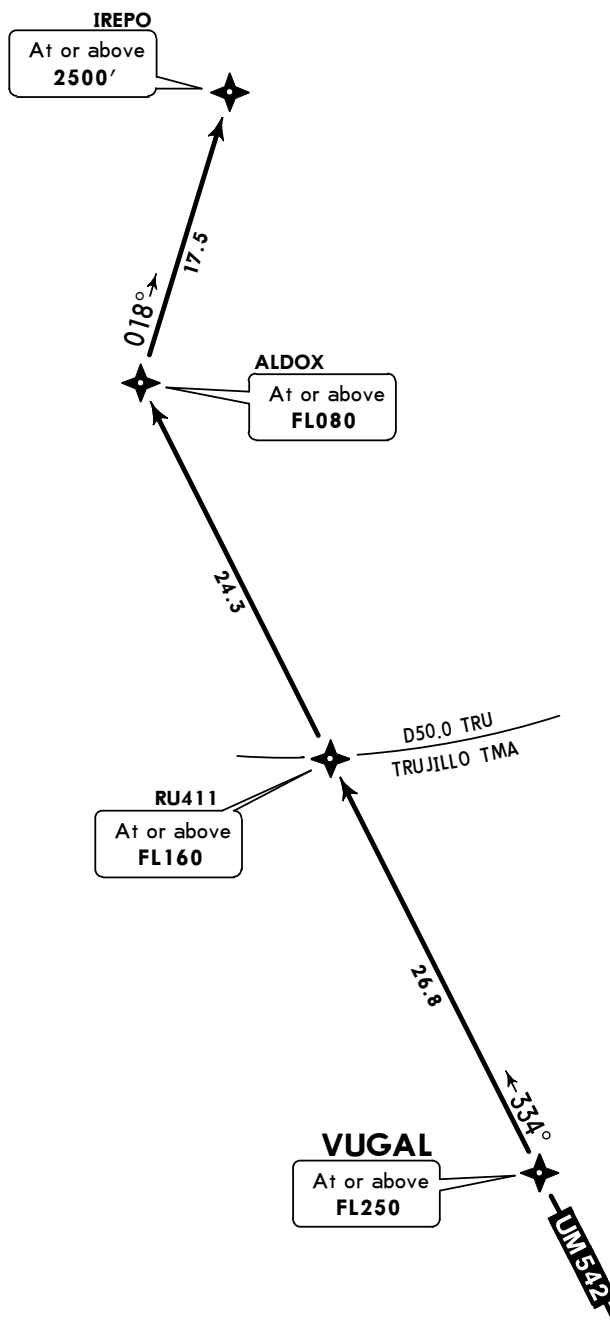
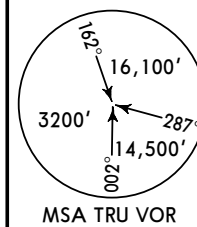
Apt Elev  
128'

Alt set: hPa Trans level: By ATC Trans alt: 4500'  
1. GNS or DME/DME/IRU required.  
2. RNP 1 approval required.

VUGAL 1 RNAV (GNSS) ARRIVAL  
[VUGAL1]  
(RWY 02)



TRUJILLO  
D 116.3 TRU  
S08 05.3 W079 06.7



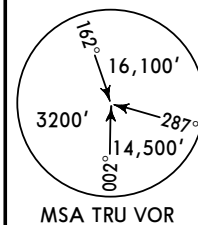
**ROUTING**

Descend on route UM-542 to VUGAL at or above FL250, continue via ALDOX to IREPO according to ATC instructions.

Apt Elev  
 128'

Trans level: By ATC Trans alt: 4500'  
 1. RNP 1 approval required.  
 2. GNSS or DME/DME/IRU required.  
 3. No turn before end of runway.

ESMIL 1A RNAV DEPARTURE  
 [ESMI1A]  
 (RWY 20)



TRUJILLO  
 D 116.3 TRU  
 508 05.3 W079 06.7

MAX 200 KT  
 At or above  
 700'

RU801  
 D10.0 TRU  
 At or above  
 3000'

RU802  
 D25.0 TRU  
 At or above  
 FL080

ESMIL  
 At or above  
 FL080

D50.0 TRU  
 TRUJILLO TMA

22 TO RTE VOR  
 509 08.8 W078 31.3  
 G675  
 UVI  
 V11



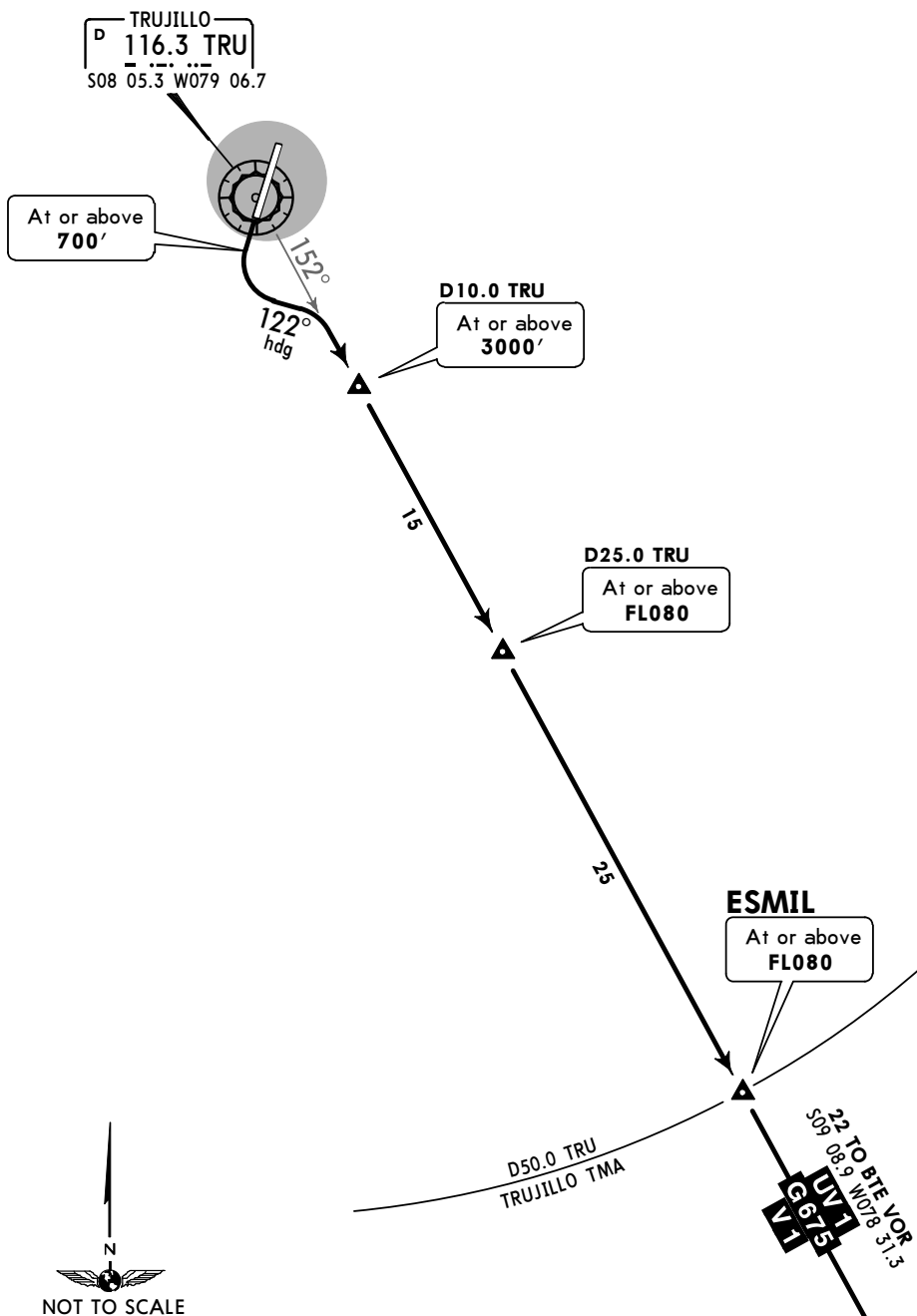
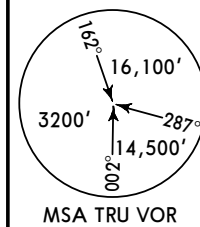
INITIAL CLIMB

Climb on runway heading until crossing 700', turn LEFT direct to RU801 at or above 3000', to RU802 on course 151° at or above FL080, to ESMIL on course 151°, continue climb to authorized flight level.

Apt Elev  
 128'

Trans level: By ATC Trans alt: 4500'  
 No turn before end of runway.

**ESMIL 1B DEPARTURE**  
**[ESMI1B]**  
**(RWY 20)**



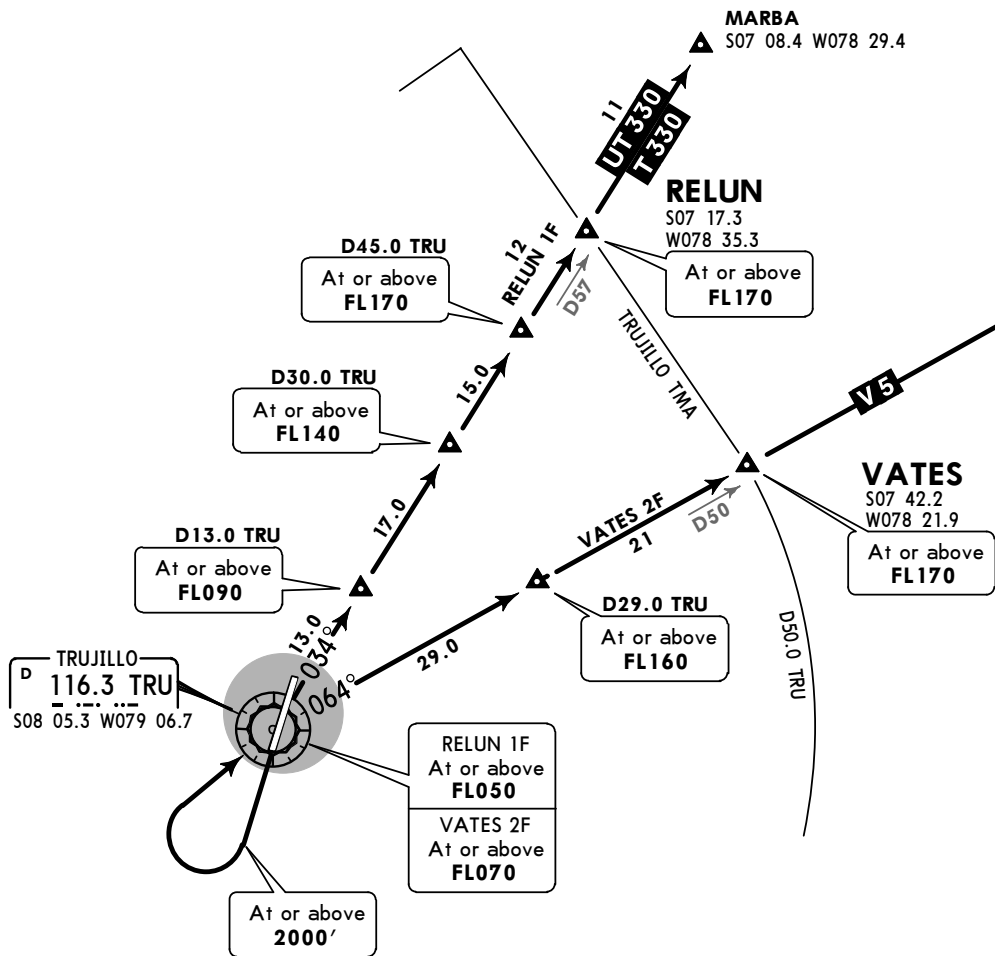
**INITIAL CLIMB**

Climb on runway heading until crossing 700', turn LEFT heading 122° to intercept TRU R-152.  
 Cross D10.0 TRU at or above 3000', D25.0 TRU at or above FL080, continue to ESMIL climbing to authorized flight level.

Apt Elev  
128'

Trans level: By ATC Trans alt: 4500'

RELUN 1F [RELU1F]  
VATES 2F [VATE2F]  
DEPARTURES  
(RWY 20)



These SIDs require minimum climb gradients:

RELUN 1F: 4.7% (285' per NM).

VATES 2F: 5.0% (300' per NM).

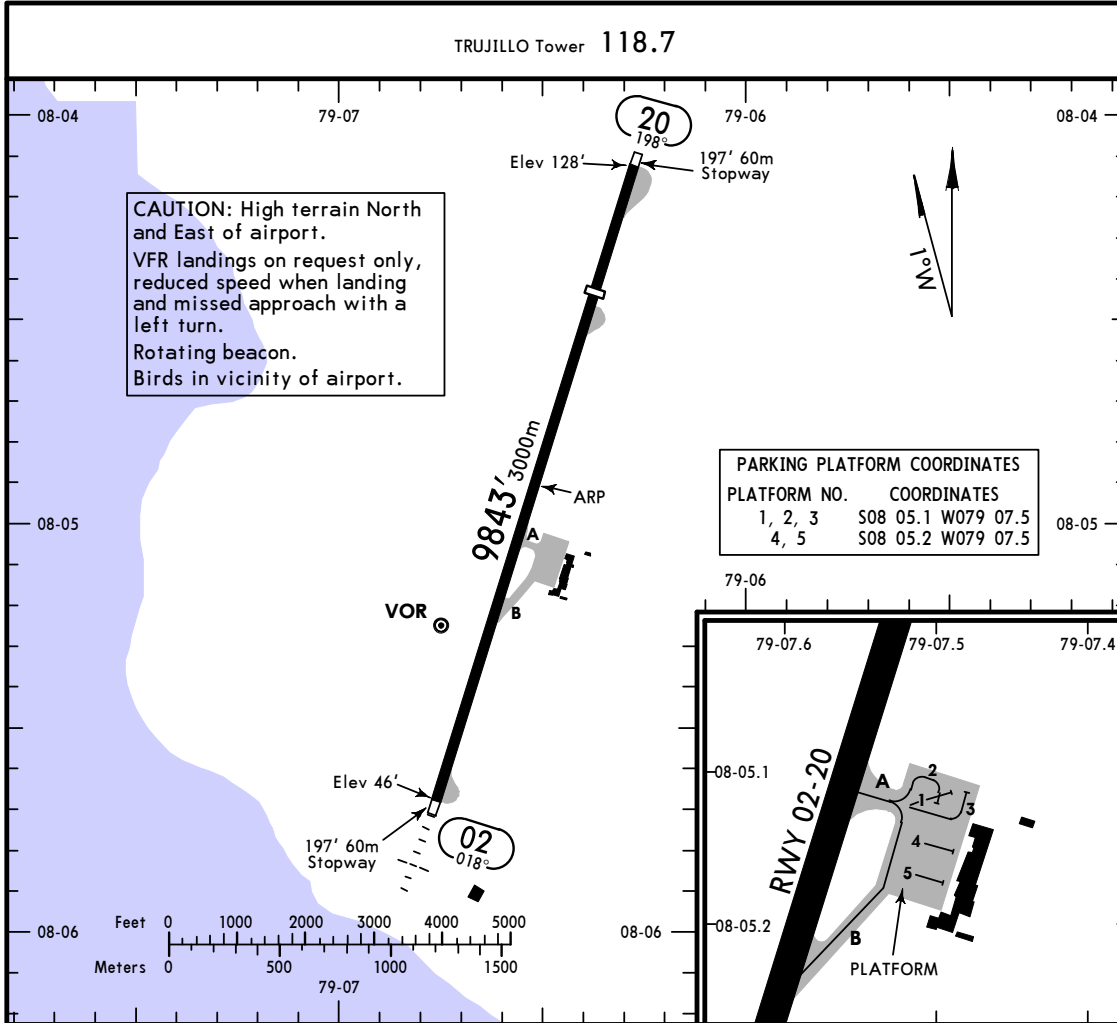
Gnd speed-KT	75	100	150	200	250	300
4.7% V/V (fpm)	357	476	714	952	1190	1428
5.0% V/V (fpm)	380	506	760	1013	1266	1519



INITIAL CLIMB

Climb on runway heading until reaching 2000', then turn RIGHT climbing to TRU VOR.

SID	ROUTING
RELUN 1F	At TRU VOR cross at or above FL050, continue climbing on TRU R-034 to cross D13.0 TRU at or above FL090, D30.0 TRU at or above FL140, D45.0 TRU at or above FL170, RELUN at or above FL170 climbing to authorized level.
VATES 2F	At TRU VOR cross at or above FL070, continue climbing on TRU R-064 to cross D29.0 TRU at or above FL160, VATES at or above FL170 climbing to authorized level.



ADDITIONAL RUNWAY INFORMATION

RWY		USABLE LENGTHS		TAKE-OFF	WIDTH
		LANDING BEYOND Threshold	Glide Slope		
02	RL ALS PAPI-L (angle 3.0°)		8906' 2715m		148'
20	RL PAPI-L (angle 3.0°)	7874' 2400m			45m

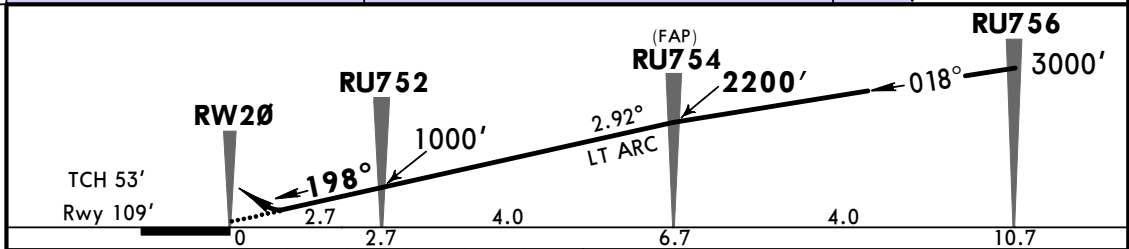
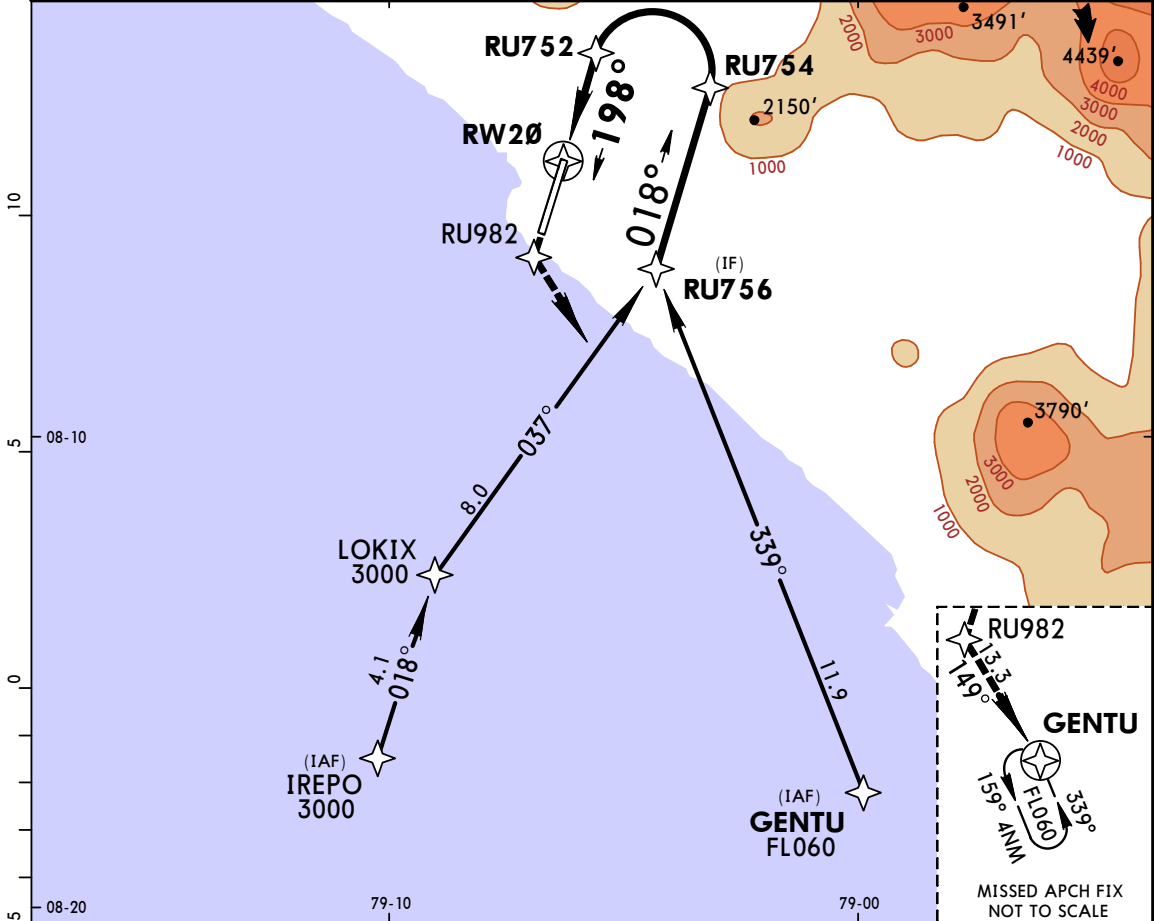
TAKE-OFF

All Rwys

	Take-Off Alternate Apt. Filed	Take-Off Alternate Apt. Not Filed
1 Eng	1600m or Higher Available Landing Minimums	
2 Eng	1 hr alternate (1 Eng Inop) 1600m	Available Landing Minimums
3 or more Eng	2 hr alternate (1 Eng Inop) 800m	



TRUJILLO Approach <b>118.7</b>				TRUJILLO TOWER <b>118.7</b>	
RNAV	Final Apch Crs <b>198°</b>	Minimum Alt <b>RU754</b> <b>2200'</b> (2091')	RNP 0.30 DA(H) <b>600'</b> (491')	Apt Elev 128'	Rwy 109'
<b>MISSED APCH: Climb to FL060 following the RNAV track to GENTU and enter the holding pattern. Follow ATC instructions.</b> Note: Procedure considers Rwy 20 displaced threshold.					<p>MSA RW20</p>
Alt Set: hPa Rwy Elev: 4 hPa Trans level: By ATC Trans alt: 4500' <b>1. SPECIAL AIRCRAFT &amp; AIRCREW AUTHORIZATION REQUIRED. 2. RF required.</b> 3. For uncompensated Baro-VNAV systems, procedure not authorized below 5°C (41°F) or above 54°C (129°F).					

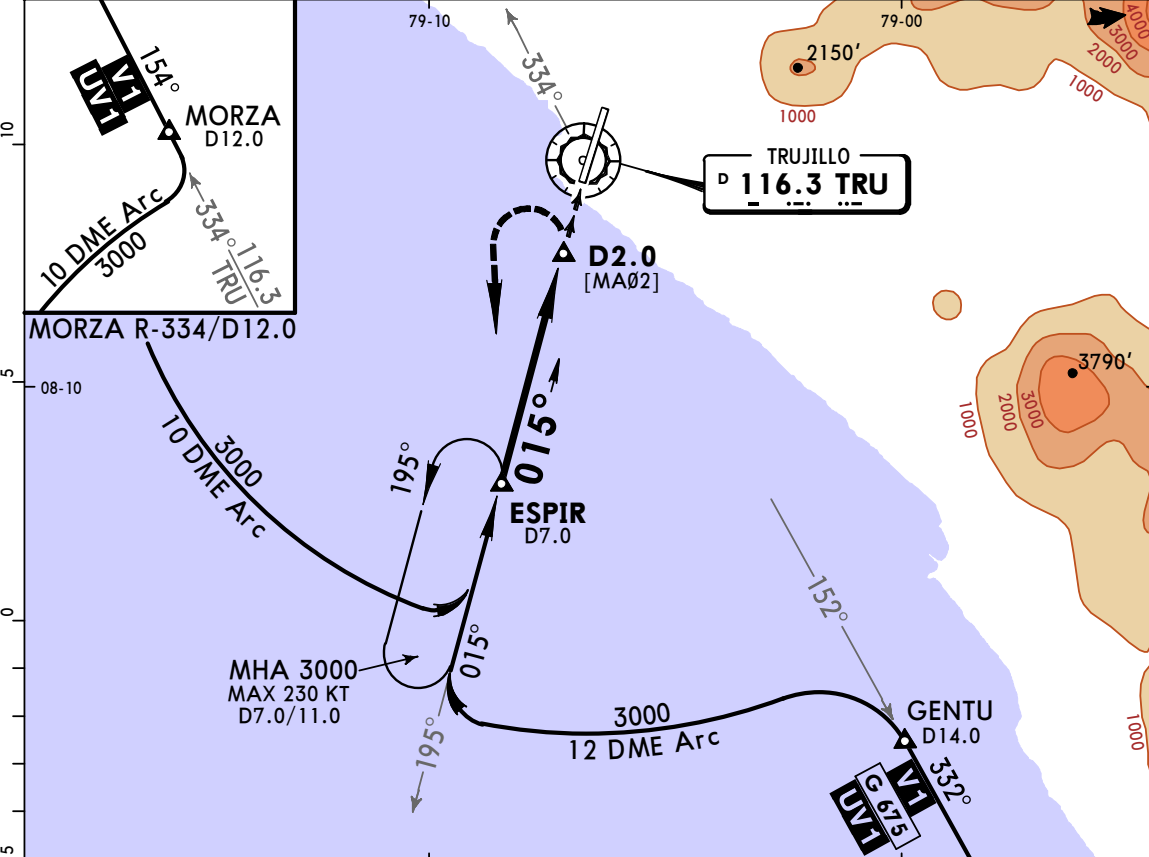


Gnd speed-Kts	70	90	100	120	140	160			
Descent Angle	2.92°	362	465	517	620	723	826	PAPI-L	FL060
MAP at DA									RNAV Track to GENTU

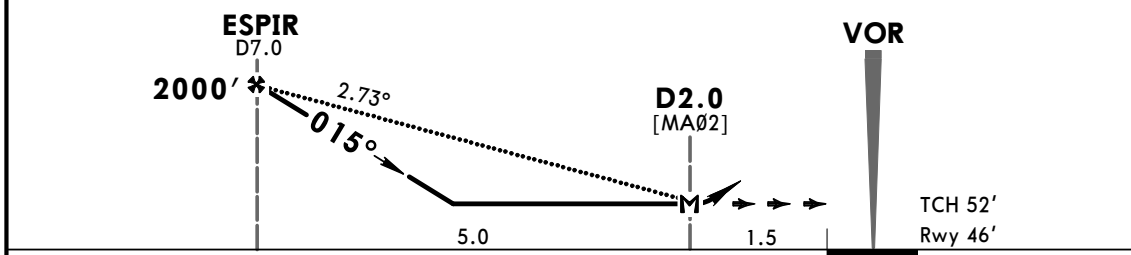
STRAIGHT-IN LANDING RWY 20 RNP 0.30 DA(H) <b>600'</b> (491')				CIRCLE-TO-LAND			
A	NOT APPLICABLE			Max Kts	A		
B	NOT APPLICABLE			B	NOT AUTHORIZED		
C	2000m			C	NOT AUTHORIZED		
D	NOT APPLICABLE			D	NOT AUTHORIZED		



TRUJILLO Approach <b>118.7</b>				TRUJILLO Tower <b>118.7</b>	
VOR TRU <b>116.3</b>	Final Apch Crs <b>015°</b>	Minimum Alt ESPIR <b>2000'</b> (1954')	MDA(H) <b>550'</b> (504')	Apt Elev 128'	Rwy 46'
<b>MISSED APCH: Immediate climbing LEFT turn to 3000' to ESPIR and hold. MAX 160 KT until completing turn.</b>					
Alt Set: hPa    Rwy Elev: 2 hPa    Trans level: By ATC    Trans alt: 4500' <b>1. DME required. 2. CAUTION: High terrain North and East of airport.</b>					



TRU DME	6.0	5.0	4.0	3.0
ALTITUDE	1700'	1414'	1129'	843'



Gnd speed-Kts	70	90	100	120	140	160	ALS PAPI-L 3000' LT ESPIR
Descent Angle	2.73°	338	435	483	579	676	
MAP at D2.0							

STRAIGHT-IN LANDING RWY 02		<b>CEILING REQUIRED</b>		CIRCLE-TO-LAND	
MDA(H) <b>550'</b> (504')		ALS out		Not Authorized at Night	
A	CEILING-VISIBILITY	Max Kts	MDA(H)	CEIL-VIS	
B	500' - 2.8 km	135	900' (772')	900' - 3.5 km	
C		160	1200' (1072')	1200' - 4.5 km	
D	NOT APPLICABLE	D	NOT APPLICABLE		

CHANGES: Comms H24, airways, minimums.

© JEPPESEN, 1999, 2016. ALL RIGHTS RESERVED.

TRUJILLO Approach  
118.7

TRUJILLO Tower  
118.7

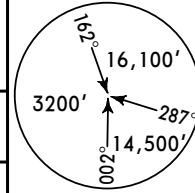
VOR  
TRU  
116.3

Final  
Apch Crs  
137°

Minimum Alt  
EBANO  
1500' (1372')

MDA(H)  
Refer to  
Minimums

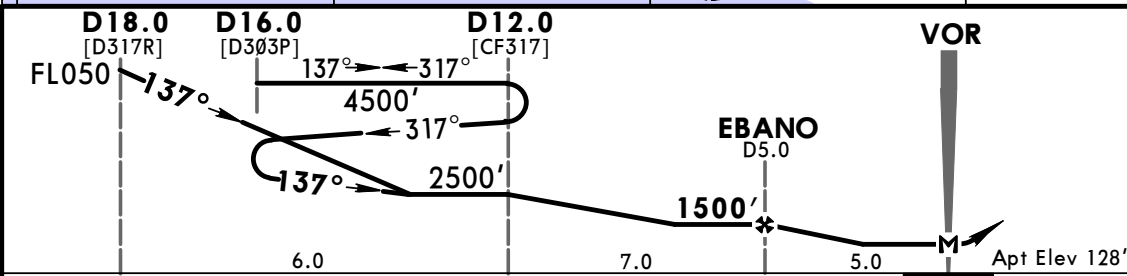
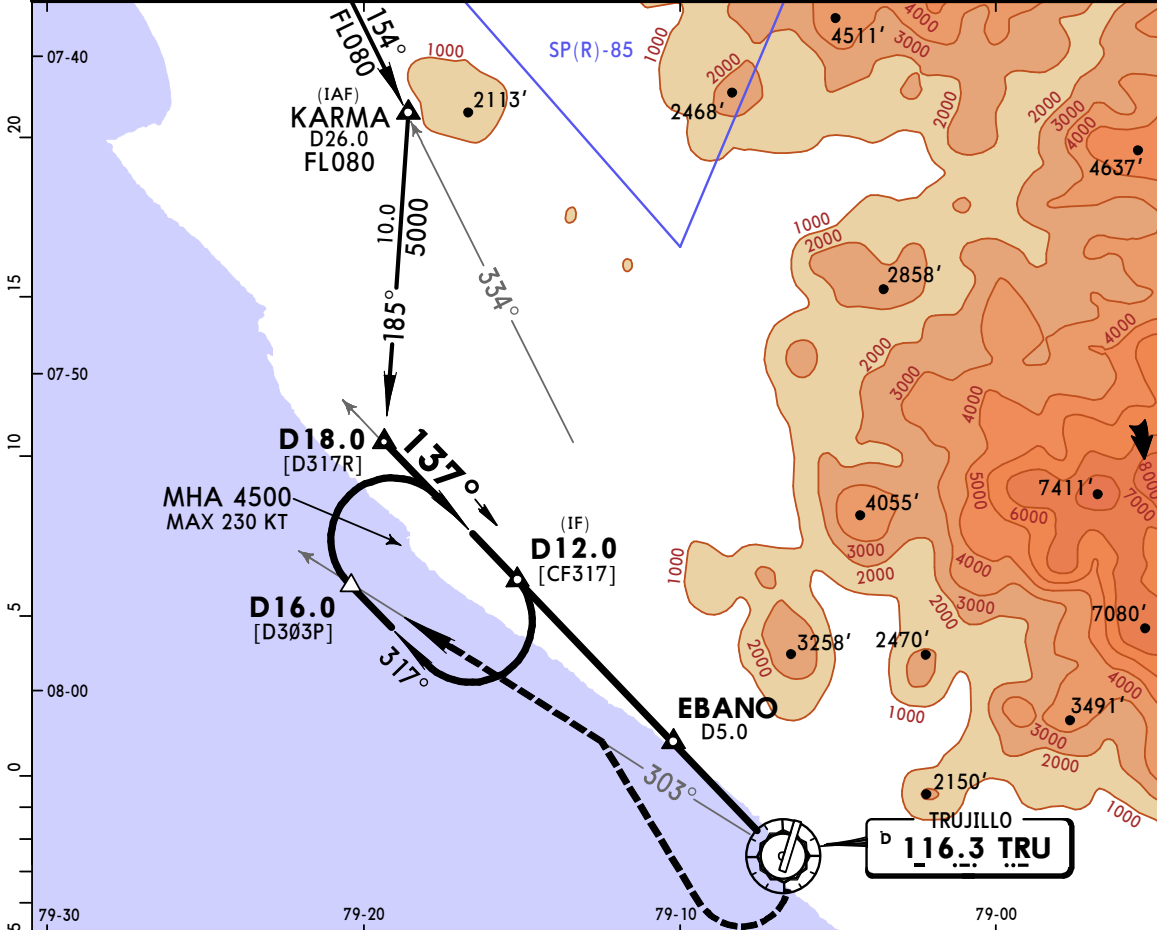
Apt Elev 128'



**MISSED APCH:** Climbing RIGHT turn, proceed outbound via TRU VOR R-303 to D16.0 TRU, then RIGHT turn to D12.0 TRU and hold.

Alt Set: hPa Apt Elev: 5 hPa Trans level: By ATC Trans alt: 4500'  
1. DME required. 2. CAUTION: High terrain North and East of airport.

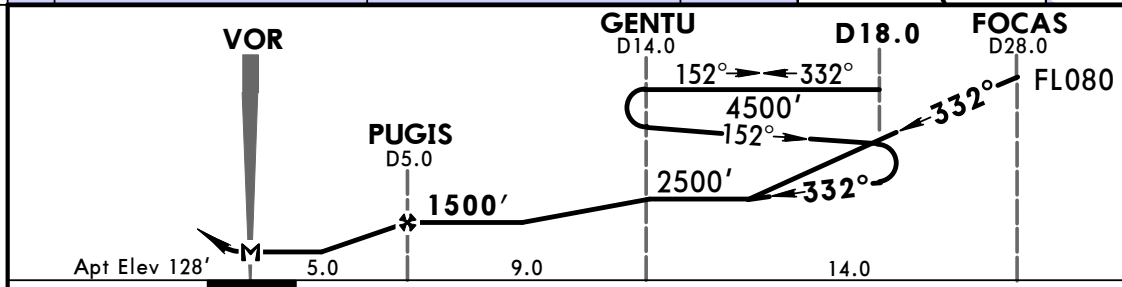
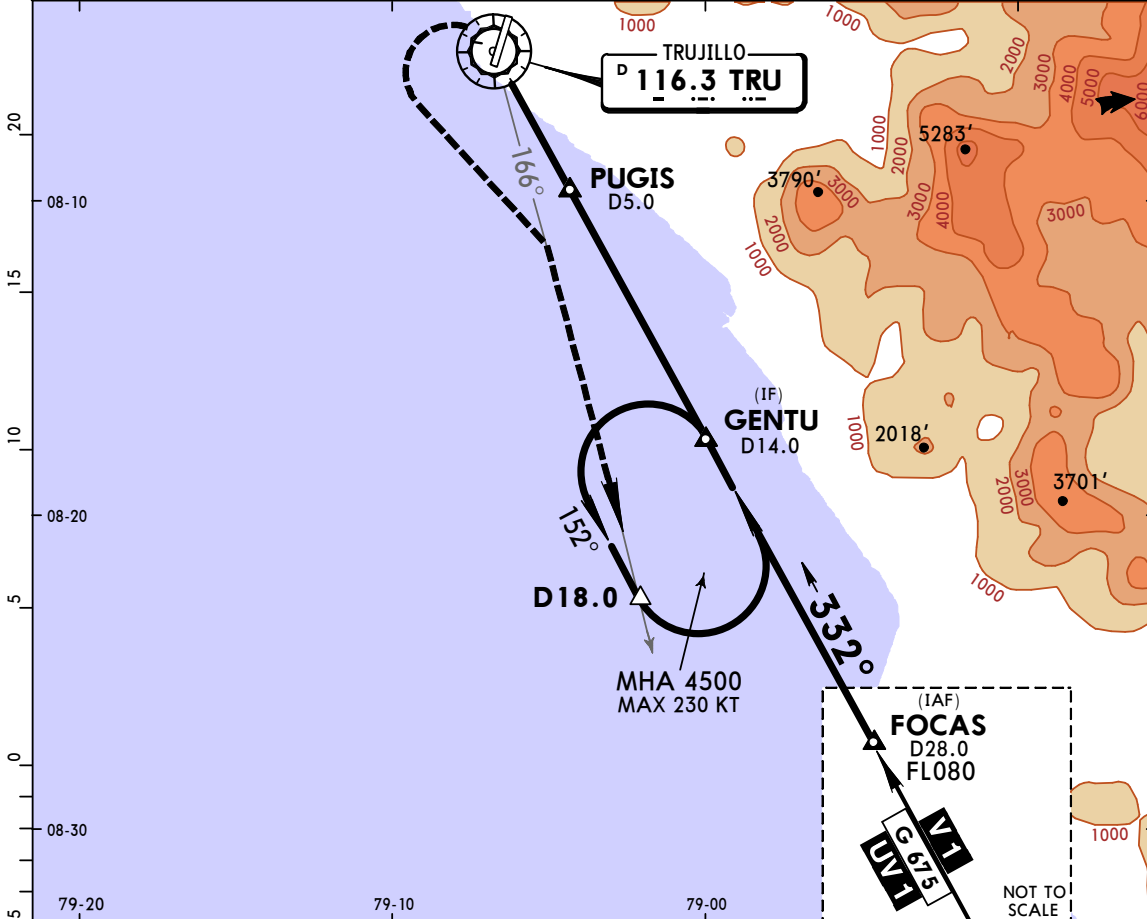
MSA TRU VOR



MAP at VOR					Lighting - Refer to Airport Chart	TRU via 116.3 R-303	D16.0
------------	--	--	--	--	-----------------------------------	---------------------	-------

CEILING REQUIRED		CIRCLE-TO-LAND Not Authorized at Night	
Max Kts	MDA(H)	CEIL-VIS	
A 135	900' (772')	900' - 3.5 km	
B 160	1200' (1072')	1200' - 4.5 km	
D	NOT APPLICABLE		

TRUJILLO Approach			TRUJILLO Tower		
118.7			118.7		
VOR TRU <b>116.3</b>	Final Apch Crs <b>332°</b>	Minimum Alt <b>PUGIS</b> <b>1500'</b> (1372')	MDA(H) Refer to Minimums	Apt Elev 128'	
<b>MISSED APCH:</b> Climbing LEFT turn, proceed outbound via TRU VOR R-166 to D18.0 TRU, then LEFT turn to GENTU INT and hold.					
Alt Set: hPa    Apt Elev: 5 hPa    Trans level: By ATC    Trans alt: 4500' <b>1. DME required.</b> 2. CAUTION: High terrain North and East of airport.					MSA TRU VOR



VOR	GENTU D14.0	D18.0	FOCAS D28.0 FL080
Apt Elev 128'	5.0	9.0	14.0
Lighting - Refer to Airport Chart			
MAP at VOR			TRU via <b>116.3</b> <b>R-166</b>

<b>CEILING REQUIRED</b>		CIRCLE-TO-LAND Not Authorized at Night	
	Max Kts	MDA(H)	CEIL-VIS
A	135	<b>900'</b> (772')	900'-3.5 km
B			
C	160	<b>1200'</b> (1072')	1200'-4.5 km
D		NOT APPLICABLE	