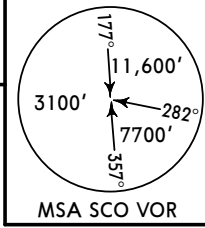
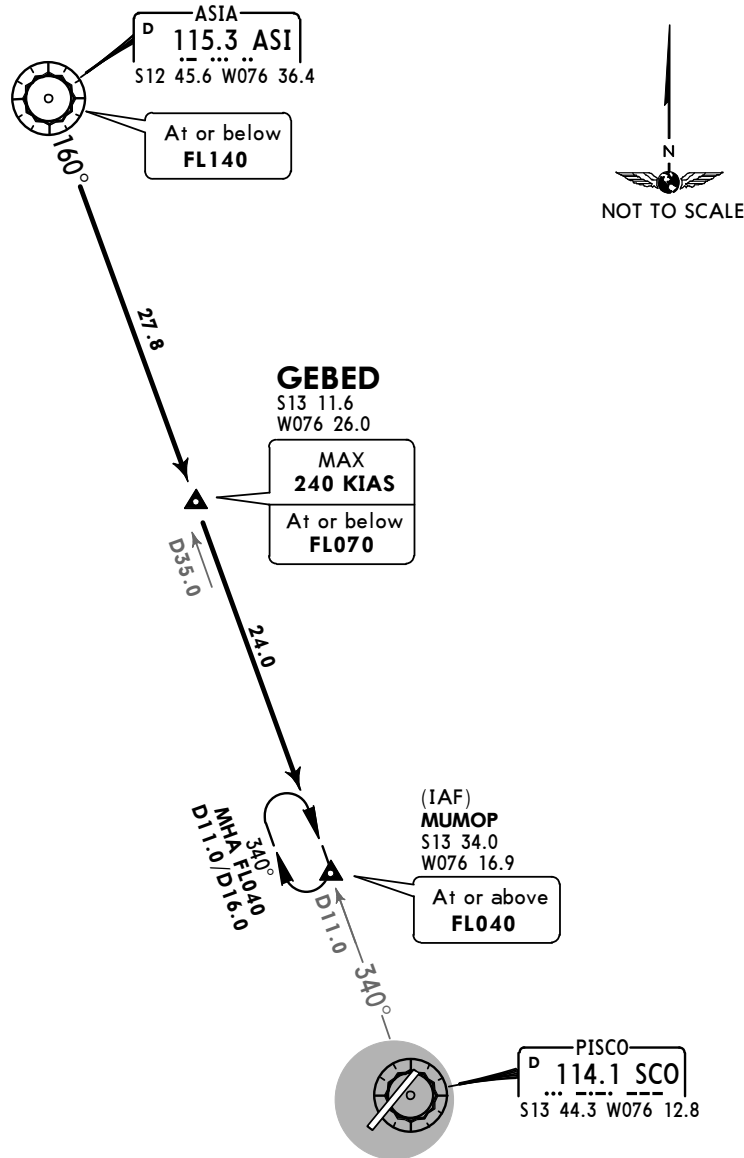


ATIS 132.95	Apt Elev 40'	Alt Set: hPa Trans level: By ATC Trans alt: 3000' DME required.
----------------	-----------------	--



**GEBED 2 [GEBED2]  
ARRIVAL  
(RWY 22)**

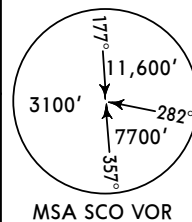


**ROUTING**

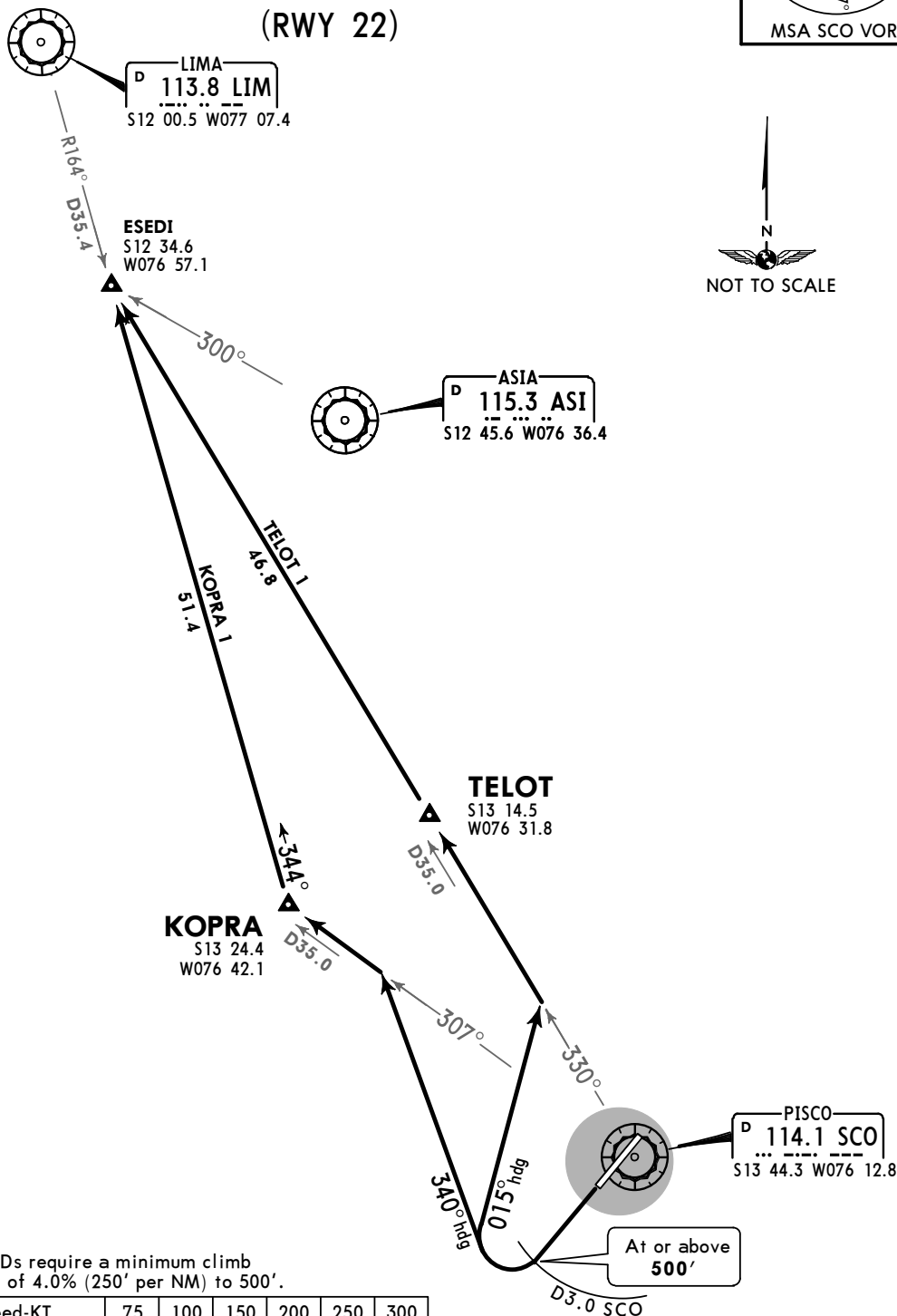
Crossing ASI VOR at or below FL140, follow ASI R-160 (heading 160°) to cross GEBED at or below FL070, continue to MUMOP at or above FL040 and proceed according to ATC instructions.

Apt Elev  
40'

Trans level: By ATC Trans alt: 3000'  
1. DME required.  
2. Initial ATC authorization: MAINTAIN FL140, request flight level change enroute on frequency 135.0 or 128.8.



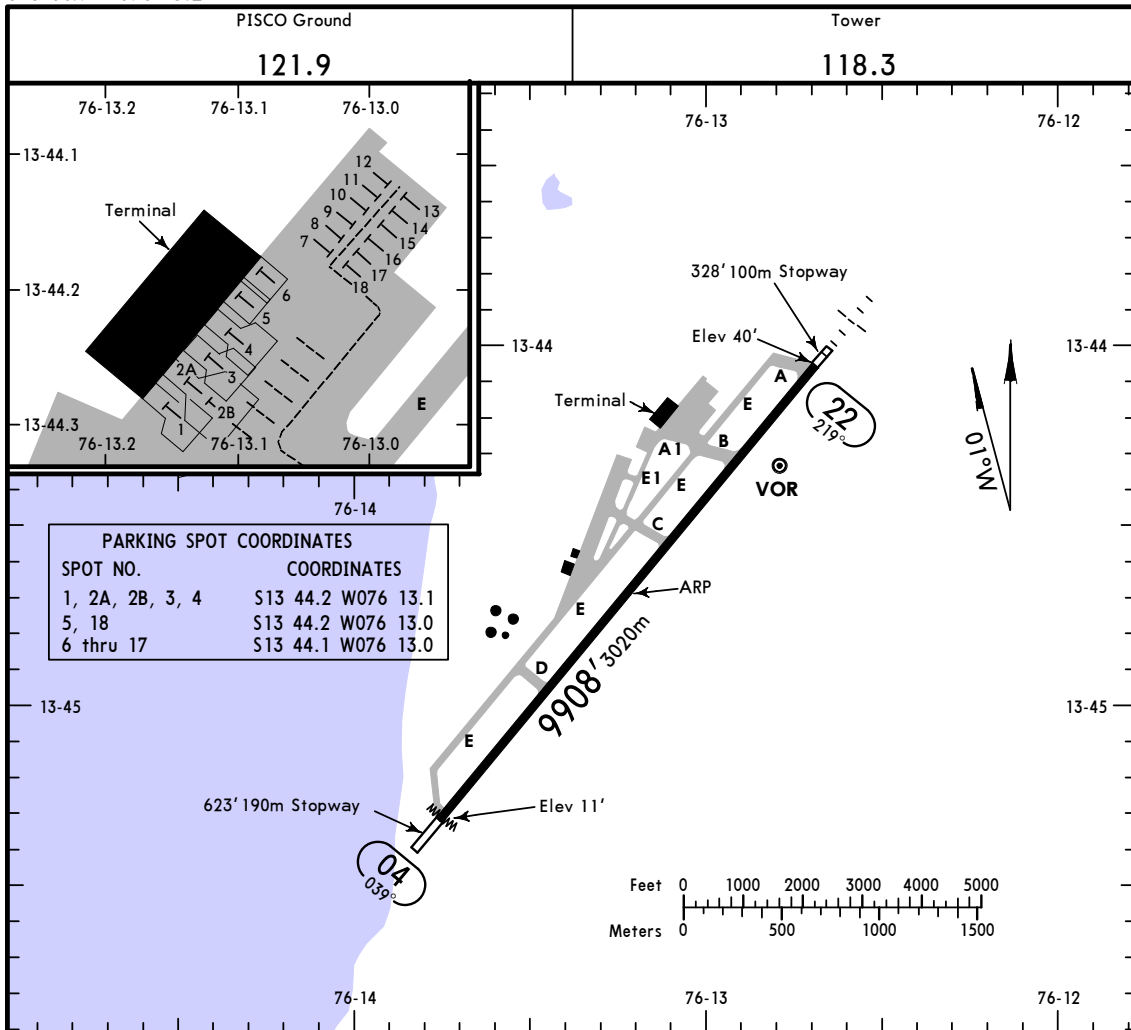
**KOPRA 1 [KOPRA1], TELOT 1 [TELOT1]  
DEPARTURES  
(RWY 22)**



These SIDs require a minimum climb gradient of 4.0% (250' per NM) to 500'.

Gnd speed-KT	75	100	150	200	250	300
4.0% V/V (fpm)	304	405	608	810	1013	1215

SID	INITIAL CLIMB
<b>KOPRA 1</b>	Climb on runway heading until crossing D3.0 SCO at or above 500', turn RIGHT on heading 340° to intercept and follow SCO R-307 to KOPRA, turn RIGHT to intercept LIM R-164, continue on LIM R-164 (heading 344°) to ESEDI and climb to flight level assigned by ATC.
<b>TELOT 1</b>	Climb on runway heading until crossing D3.0 SCO at or above 500', turn RIGHT on heading 015° to intercept and follow SCO R-330 (heading 330°) to TELOT, MAINTAIN SCO R-330 (heading 330°) to ESEDI and climb to flight level assigned by ATC.



ADDITIONAL RUNWAY INFORMATION

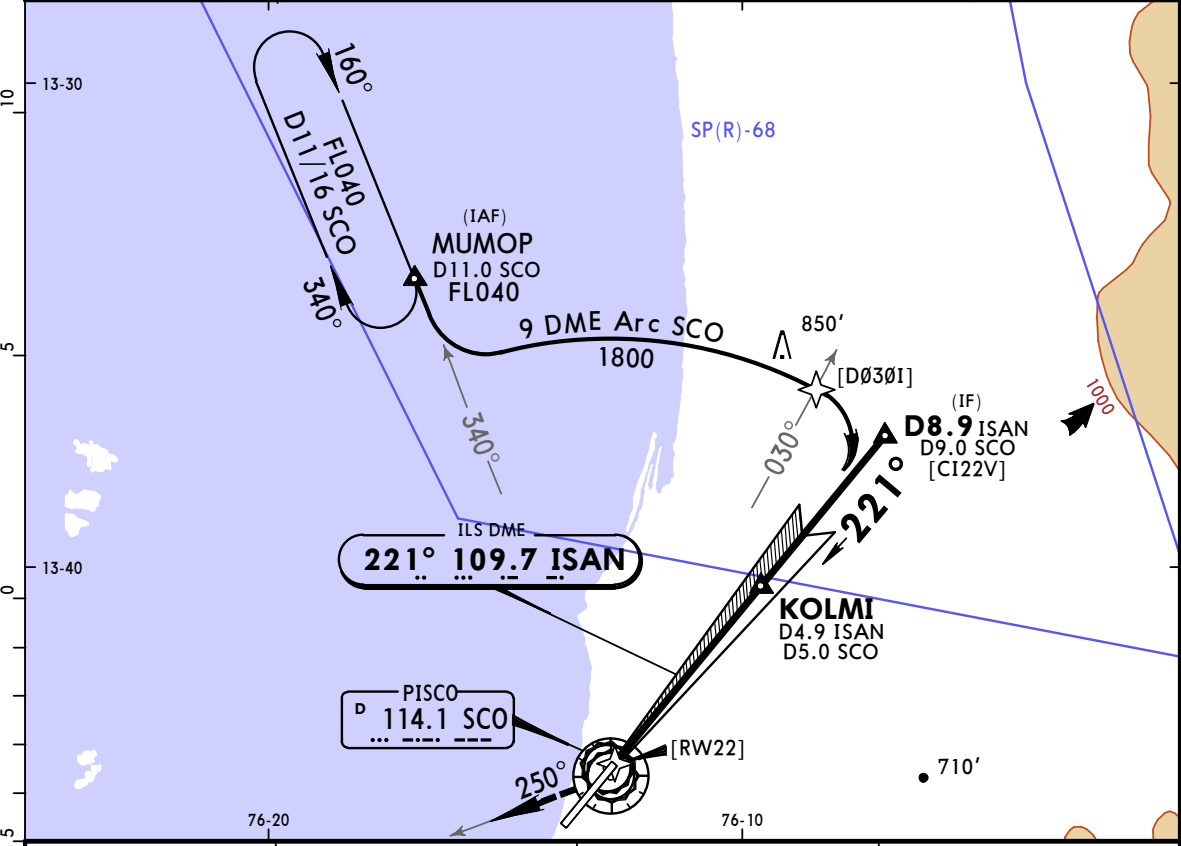
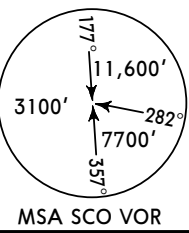
RWY		USABLE LENGTHS			WIDTH
		Threshold	Landing Beyond Glide Slope	TAKE-OFF	
04	MIRL				148'
22	MIRL SALSF PAPI-L (angle 3.0°)		8923' 2720m		45m

TAKE-OFF

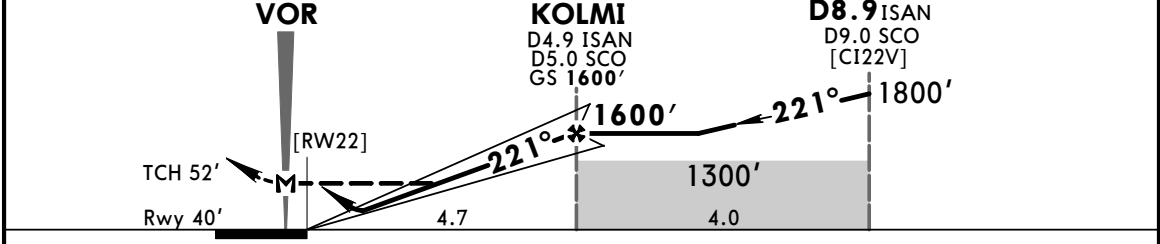
All Rwys

	Take-Off Alternate Apt. Filed	Take-Off Alternate Apt. Not Filed
1 Eng	1600m or Higher Available Landing Minimums	
2 Eng	1 hr alternate (1 Eng Inop) 1600m	Available Landing Minimums
3 or more Eng	2 hr alternate (1 Eng Inop) 800m	

ATIS <b>132.95</b>		PISCO Tower <b>118.3</b>			Ground <b>121.9</b>
LOC ISAN <b>109.7</b>	Final Apch Crs <b>221°</b>	GS <b>KOLMI</b> 1600' (1560')	ILS DA(H) <b>300'</b> (260')	Apt Elev 40' Rwy 40'	
<b>MISSED APCH: Climb outbound on SCO VOR R-250 to 2000', then follow ATC instructions.</b>					
Alt Set: hPa    Rwy Elev: 1 hPa    Trans level: By ATC    Trans alt: 3000' <b>1. DME required. 2. ILS DME associated with the glidepath (0.2 NM from Rwy 22 threshold).</b>					



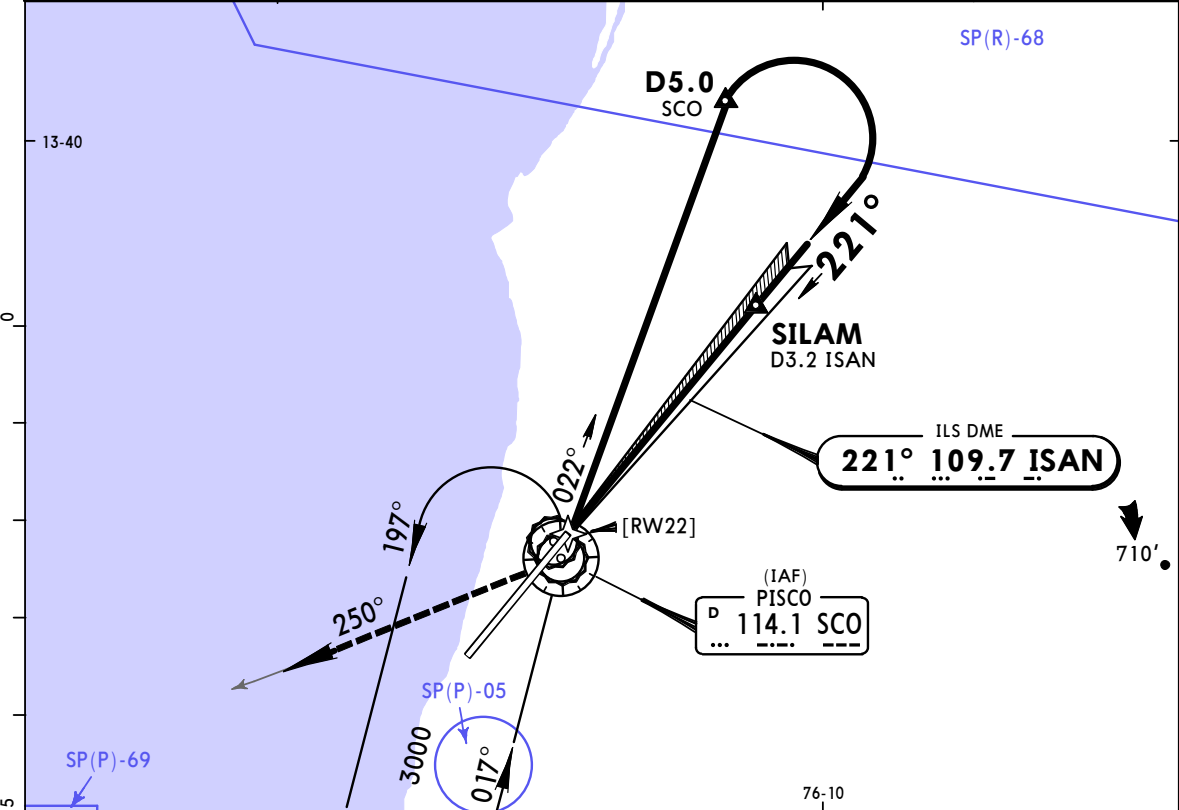
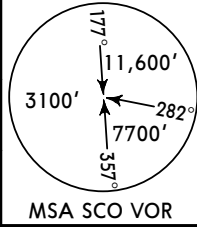
ISAN DME	2.0	3.0	4.0
ALTITUDE	670'	990'	1310'



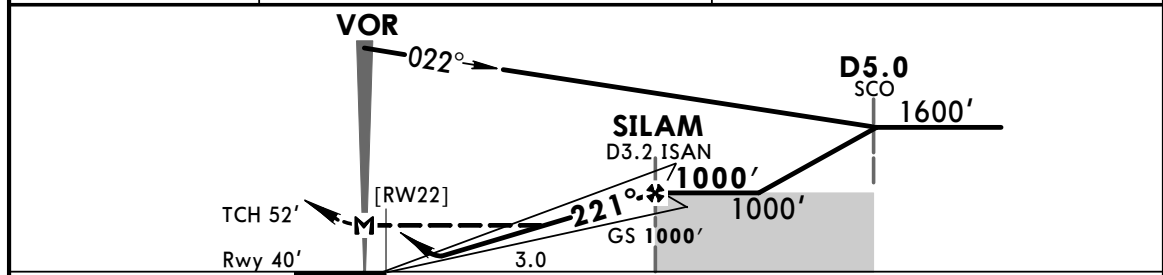
Gnd speed-Kts	70	90	100	120	140	160	SALS PAPI	2000' SCO on 114.1 R-250
GS	3.00°	372	478	531	637	743		
MAP at VOR								

STRAIGHT-IN LANDING RWY 22				CIRCLE-TO-LAND	
ILS DA(H) <b>300'</b> (260')		LOC (GS out) MDA(H) <b>380'</b> (340')		Max Kts	
FULL	ALS out	ALS out	ALS out	MDA(H)	
A				100	1000' (960') -3800m
B				135	
C	1200m		1600m	180	
D				205	

ATIS 132.95		PISCO Tower 118.3		Ground 121.9	
LOC ISAN <b>109.7</b>	Final Apch Crs <b>221°</b>	GS <b>SILAM</b> 1000' (960')	ILS DA(H) <b>300'</b> (260')	Apt Elev 40' Rwy 40'	
<b>MISSED APCH: Climb outbound on SCO VOR R-250 to 2000', then follow ATC instructions.</b>					
Alt Set: hPa		Rwy Elev: 1 hPa	Trans level: By ATC		Trans alt: 3000'
1. DME required. threshold).		2. ILS DME associated with the glidepath (0.2 NM from Rwy 22)			



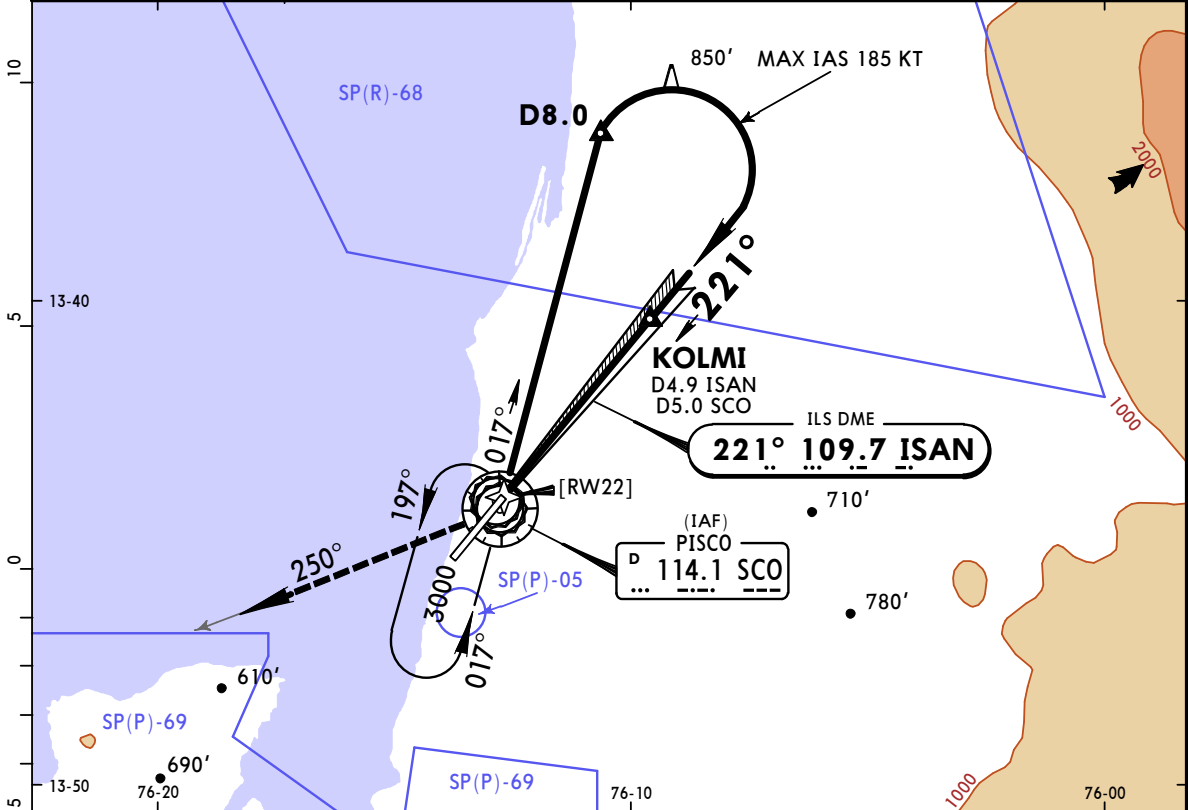
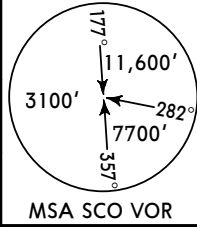
ISAN DME	2.0	3.0
ALTITUDE	670'	990'



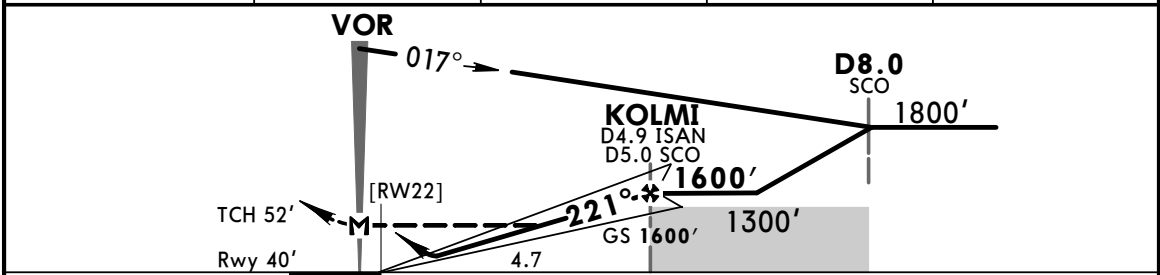
Gnd speed-Kts	70	90	100	120	140	160	SALS PAPI	2000' on 114.1 R-250
GS	3.00°	372	478	531	637	743		
MAP at VOR								

STRAIGHT-IN LANDING RWY 22				CIRCLE-TO-LAND			
ILS DA(H) <b>300'</b> (260')		LOC (GS out) MDA(H) <b>380'</b> (340')					
FULL		ALS out		ALS out		Max Kts	
A	1200m		1600m		100		1000' (960') -3800m
B					135		
C	NOT APPLICABLE		NOT APPLICABLE		C		NOT APPLICABLE
D					D		

ATIS 132.95		PISCO Tower 118.3		Ground 121.9	
LOC ISAN <b>109.7</b>	Final Apch Crs <b>221°</b>	GS <b>KOLMI</b> 1600' (1560')	ILS DA(H) <b>300'</b> (260')	Apt Elev 40' Rwy 40'	
<b>MISSED APCH: Climb outbound on SCO VOR R-250 to 2000', then follow ATC instructions.</b>					
Alt Set: hPa		Rwy Elev: 1 hPa	Trans level: By ATC		Trans alt: 3000'
1. DME required. threshold).		2. ILS DME associated with the glidepath (0.2 NM from Rwy 22)			



ISAN DME	2.0	3.0	4.0	5.0
ALTITUDE	670'	990'	1310'	1630'

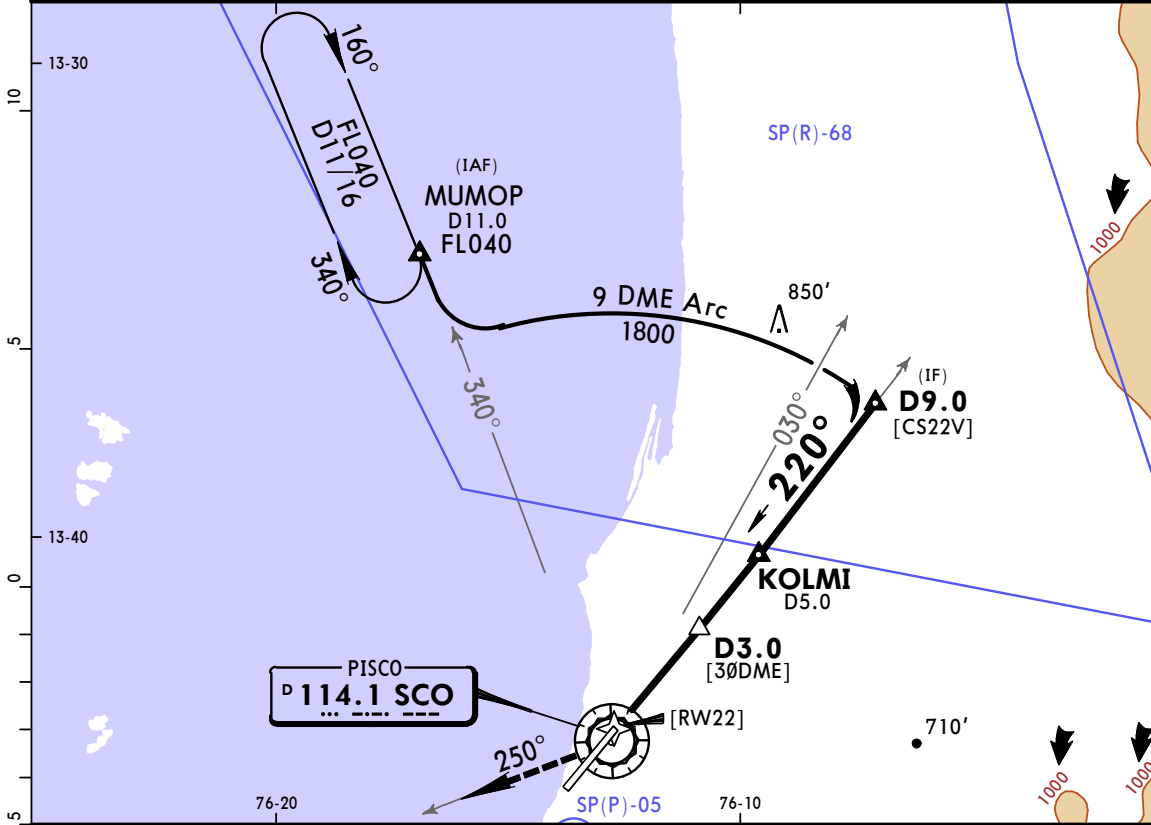
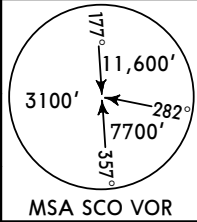


Gnd speed-Kts	70	90	100	120	140	160	SALS PAPI	2000' SCO on 114.1 R-250
GS	3.00°	372	478	531	637	743		
MAP at VOR								

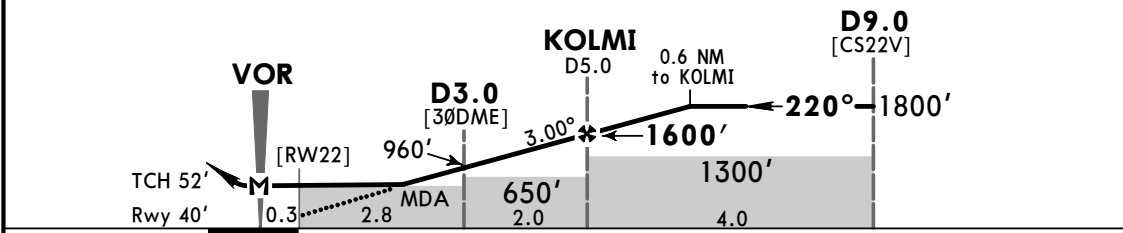
STRAIGHT-IN LANDING RWY 22				CIRCLE-TO-LAND			
ILS DA(H) <b>300'</b> (260')		LOC (GS out) MDA(H) <b>380'</b> (340')		Max Kts		MDA(H)	
FULL		ALS out		ALS out		NOT APPLICABLE	
A	NOT APPLICABLE			NOT APPLICABLE			A
B	NOT APPLICABLE			NOT APPLICABLE			B
C	1200m			1600m			180
D	1200m			1600m			205

PANS OPS

ATIS <b>132.95</b>		PISCO Tower <b>118.3</b>			Ground <b>121.9</b>
VOR SCO <b>114.1</b>	Final Apch Crs <b>220°</b>	Minimum Alt <b>KOLMI</b> <b>1600'</b> (1560')	MDA(H) <b>540'</b> (500')	Apt Elev 40' Rwy 40'	
<b>MISSED APCH: Climb outbound on SCO VOR R-250 to 2000', then proceed according to ATC instructions.</b>					
Alt Set: hPa		Rwy Elev: 1 hPa	Trans level: By ATC		Trans alt: 3000'
<b>1. DME required.</b>					MSA SCO VOR



SCO DME	2.0	3.0	4.0	5.0
ALTITUDE	650'	960'	1280'	1600'

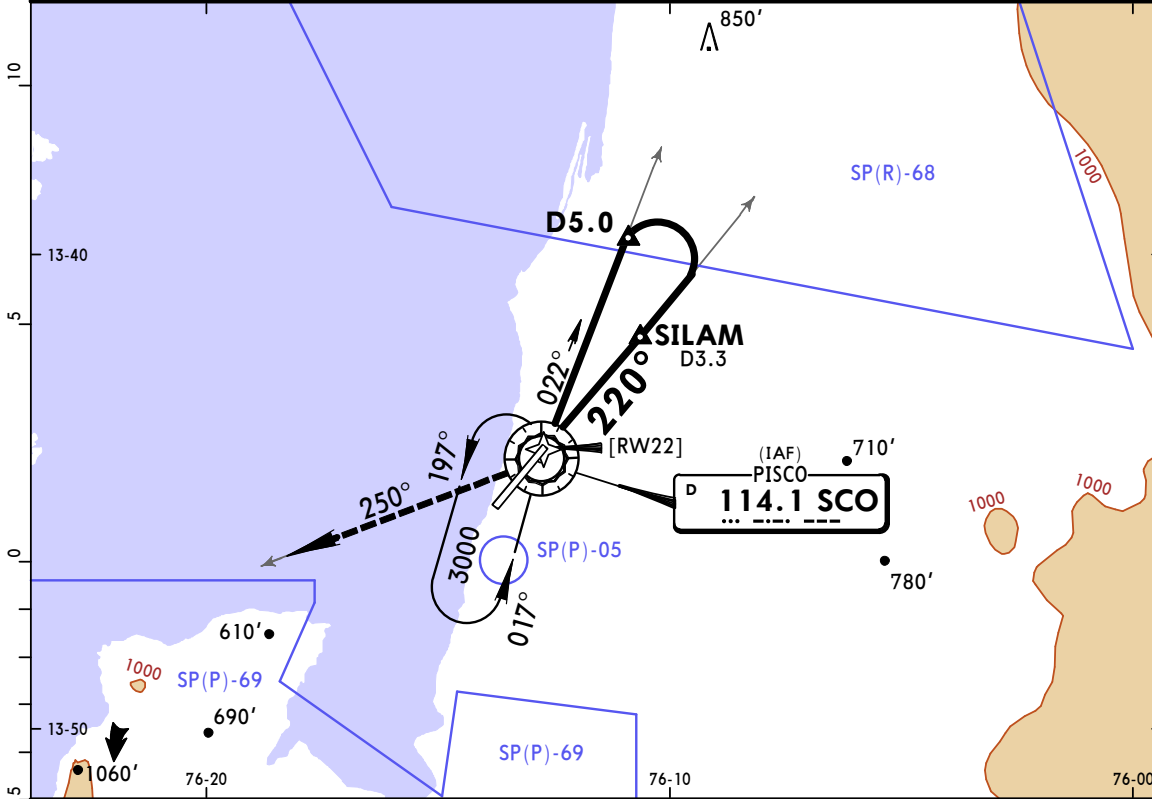
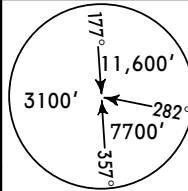


Gnd speed-Kts	70	90	100	120	140	160	SALSF PAPI <b>2000'</b> ↑ SCO on <b>114.1</b> <b>R-250</b>
Descent angle	3.00°	372	478	531	637	743	
MAP at VOR							

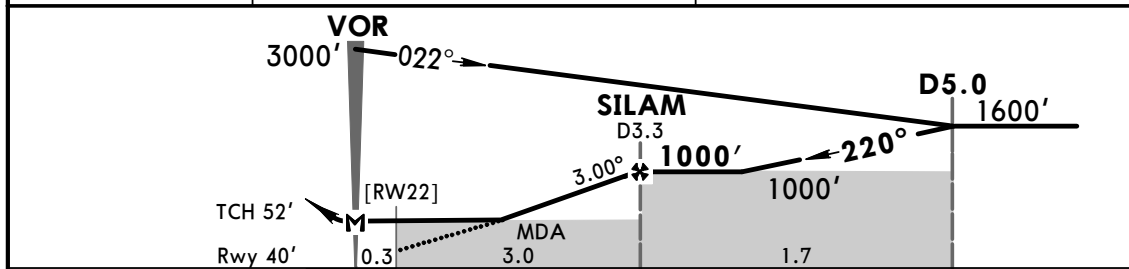
STRAIGHT-IN LANDING RWY22			CIRCLE-TO-LAND	
MDA(H) <b>540'</b> (500')			MDA(H)	
ALS out			Max Kts	
A	2000m		100	
B			135	
C	2800m		180	
D			205	
			1000' (960') -3800m	

PANS OPS

ATIS 132.95		PISCO Tower 118.3			Ground 121.9
VOR SCO <b>114.1</b>	Final Apch Crs <b>220°</b>	Minimum Alt SILAM <b>1000'</b> (960')	MDA(H) <b>540'</b> (500')	Apt Elev 40' Rwy 40'	
<b>MISSED APCH:</b> Climb outbound on SCO VOR R-250 to 2000', then proceed according to ATC instructions.					
Alt Set: hPa    Rwy Elev: 1 hPa    Trans level: By ATC    Trans alt: 3000' <b>1. DME required. 2. MAX 140 KT turning base.</b>					



SCO DME	2.0	3.0
ALTITUDE	650'	960'



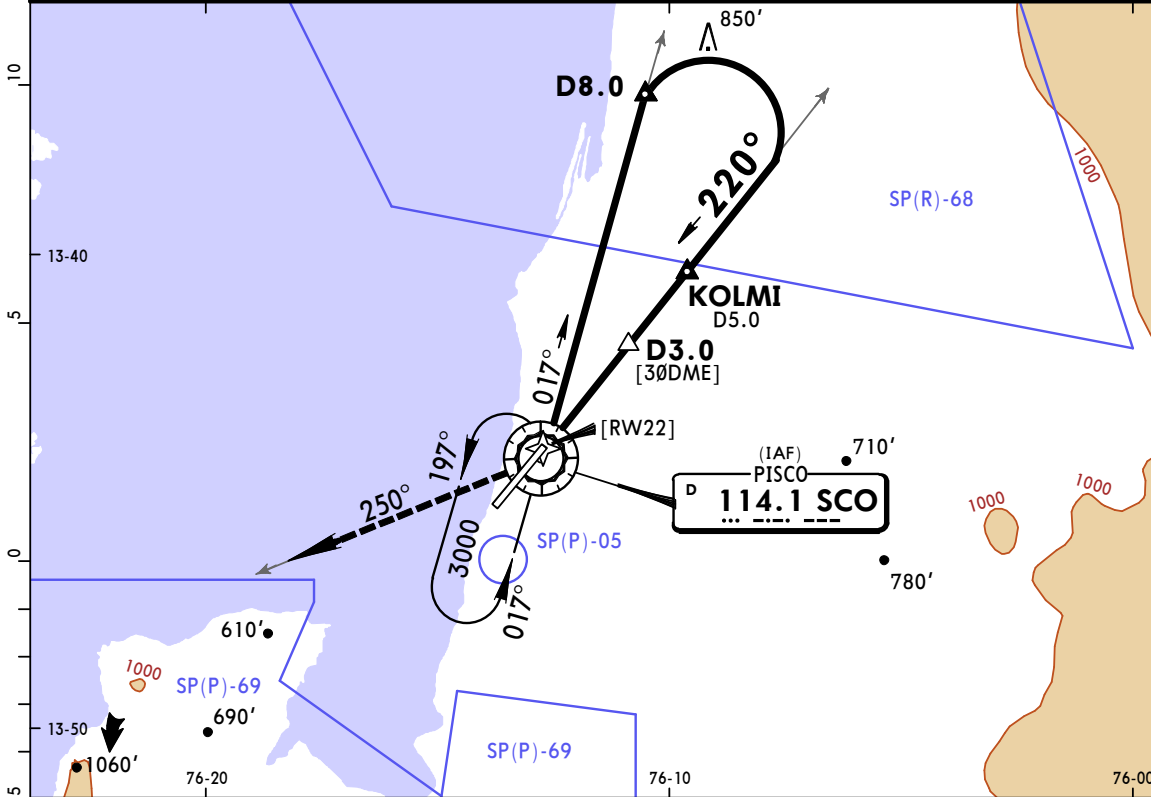
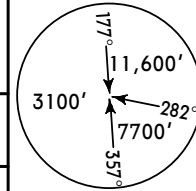
Gnd speed-Kts	70	90	100	120	140	160	SALSF PAPI 2000' on 114.1 ↑ SCO R-250
Descent angle	3.00°	372	478	531	637	743	
MAP at VOR							

STRAIGHT-IN LANDING RWY22			CIRCLE-TO-LAND		
MDA(H) <b>540'</b> (500')			MDA(H)		
ALS out			Max Kts		
A	2000m		100	1000' (960') -3800m	
B			135		
C	NOT APPLICABLE		C	NOT APPLICABLE	
D			D		

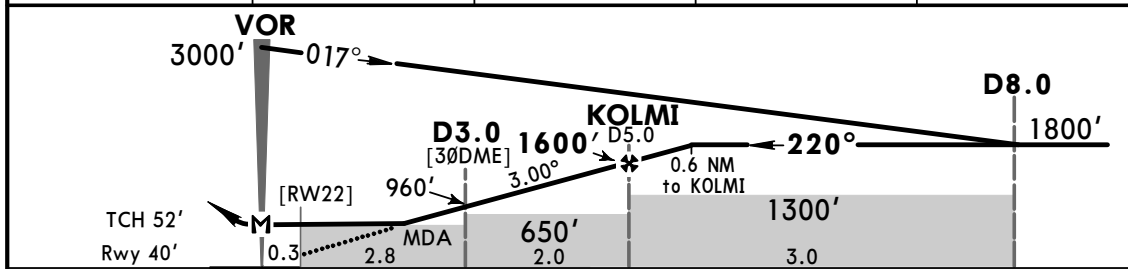
PANS OPS



ATIS 132.95		PISCO Tower 118.3			Ground 121.9
VOR SCO <b>114.1</b>	Final Apch Crs <b>220°</b>	Minimum Alt <b>KOLMI</b> 1600' (1560')	MDA(H) <b>540'</b> (500')	Apt Elev 40' Rwy 40'	
<b>MISSED APCH: Climb outbound on SCO VOR R-250 to 2000', then proceed according to ATC instructions.</b>					
Alt Set: hPa		Rwy Elev: 1 hPa	Trans level: By ATC		Trans alt: 3000'
1. DME required. 2. MAX 185 KT turning base.					MSA SCO VOR



SCO DME	2.0	3.0	4.0	5.0
ALTITUDE	650'	960'	1280'	1600'



Gnd speed-Kts	70	90	100	120	140	160	SALSF PAPI 2000' on 114.1 ↑ R-250
Descent angle	3.00°	372	478	531	637	743	
MAP at VOR							

STRAIGHT-IN LANDING RWY22				CIRCLE-TO-LAND			
MDA(H) <b>540'</b> (500')				ALS out			
NOT APPLICABLE				Max Kts	MDA(H)		
A	NOT APPLICABLE			A	NOT APPLICABLE		
B	2000m			B	1000' (960') -3800m		
C	2800m			180			
D				205			

PANS OPS