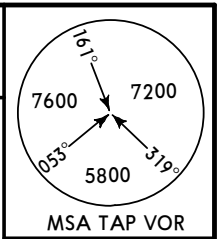
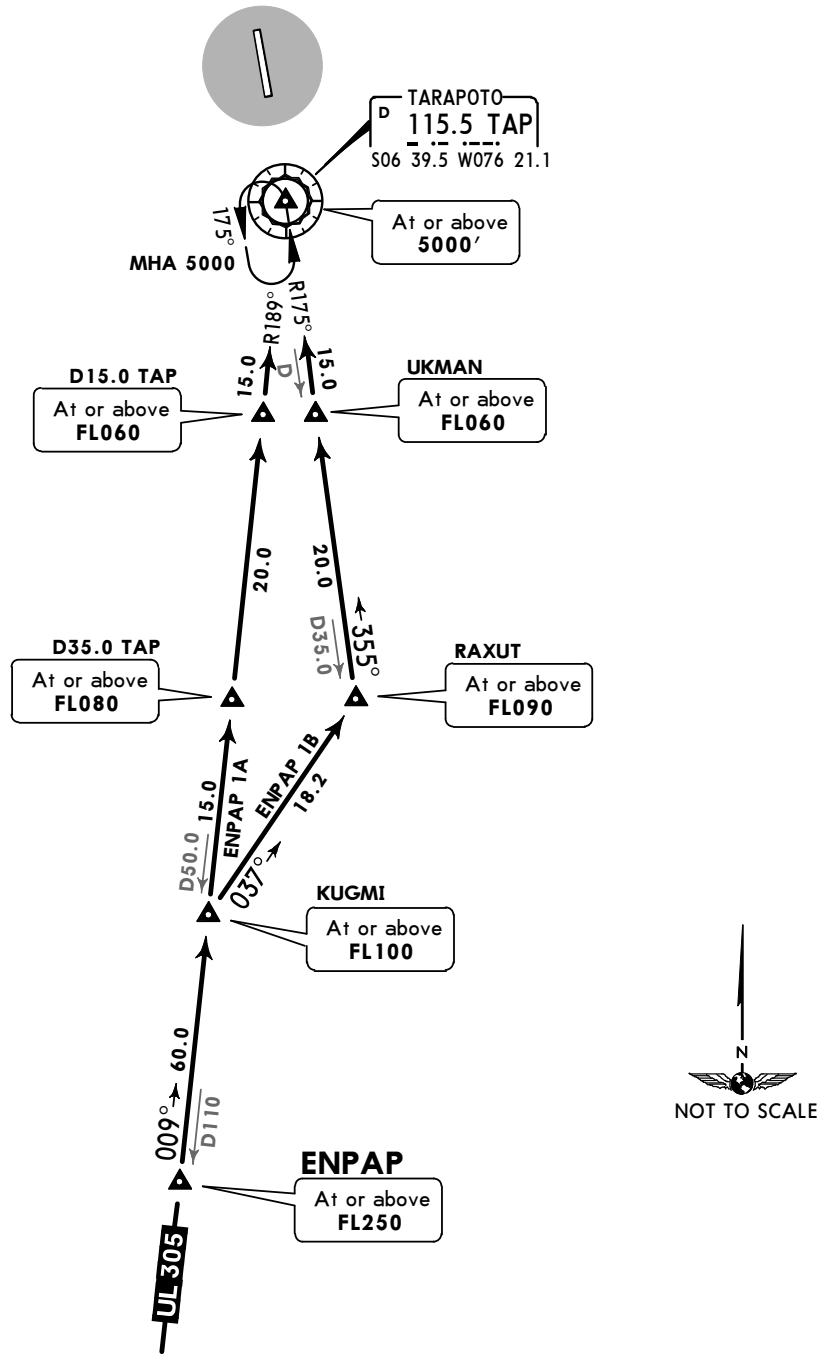


*ATIS 130.85	Apt Elev 868'	Alt Set: hPa Trans level: By ATC Trans alt: 5000'
-----------------	------------------	--



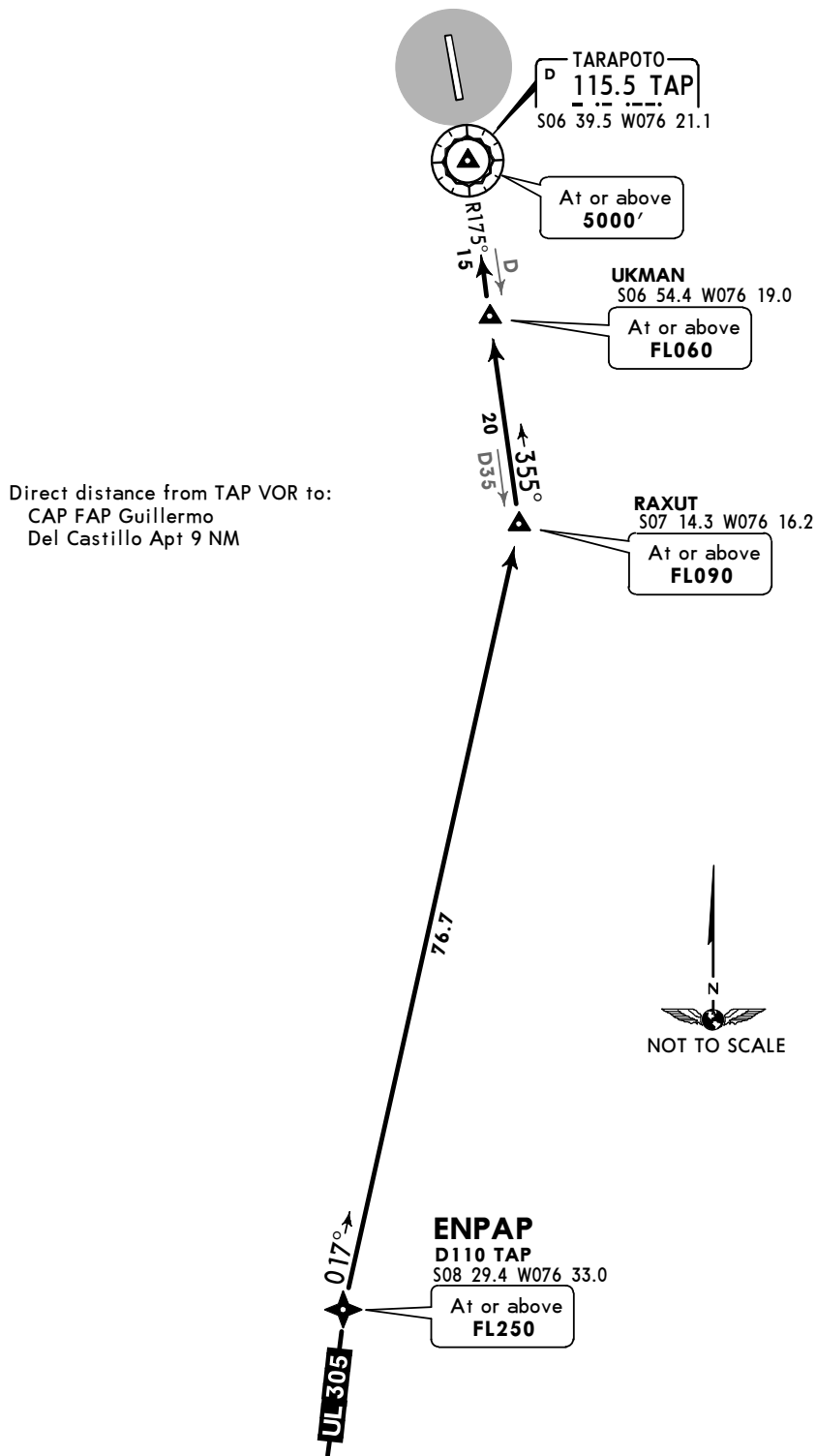
ENPAP 1A [ENPA1A], ENPAP 1B [ENPA1B]
ARRIVALS
(RWY 35)



STAR	ROUTING
ENPAP 1A	From ENPAP on TAP R-189 (heading 009°) to TAP VOR, cross KUGMI at or above FL100, D35.0 TAP at or above FL080, D15.0 TAP at or above FL060, TAP VOR at or above 5000'. Then according to ATC instructions.
ENPAP 1B	From ENPAP on TAP R-189 (heading 009°) to KUGMI at or above FL100, turn RIGHT 037° course to RAXUT at or above FL090, turn LEFT on TAP R-175 (heading 355°) to UKMAN at or above FL060. Then according to ATC instructions.

*ATIS 130.85	Apt Elev 868'	Alt Set: hPa Trans level: By ATC Trans alt: 5000' RNAV 5 required from ENPAP to RAXUT.
-----------------	------------------	--

ENPAP 1D ARRIVAL
 [ENPA 1D]
 (RWY 35)



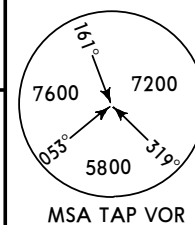
ROUTING

From ENPAP direct to RAXUT (heading 017°) cross RAXUT at or above FL090, turn LEFT on TAP R-175 (heading 355°) to UKMAN at or above FL060. Then continue according to ATC instructions.

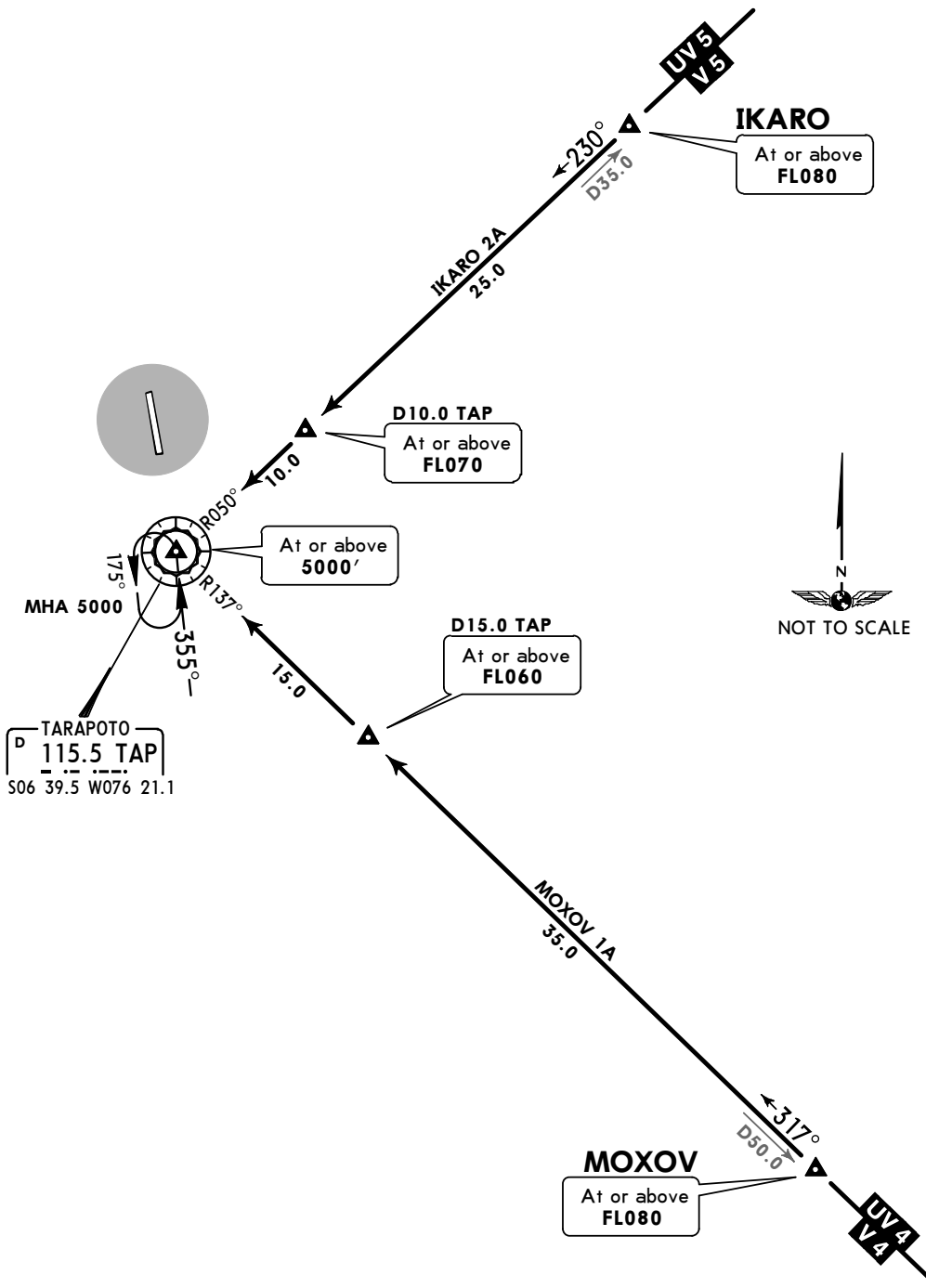
*ATIS
130.85

Apt Elev
868'

Alt Set: hPa
Trans level: By ATC Trans alt: 5000'



IKARO 2A [IKAR2A], MOXOV 1A [MOXO1A]
ARRIVALS
(RWY 35)



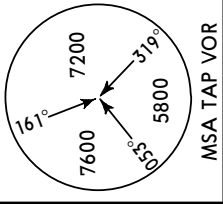
STAR	ROUTING
IKARO 2A	Cross IKARO at or above FL080, continue descent on TAP R-050 (heading 230°) to TAP VOR, cross D10.0 TAP at or above FL070, TAP VOR at or above 5000', proceed according to ATC instructions.
MOXOV 1A	Cross MOXOV at or above FL080, continue descent on TAP R-137 (heading 317°), cross D15.0 TAP at or above FL060 and continue to TAP VOR at or above 5000', or according to ATC instruction.

CHANGES: ATIS frequency.

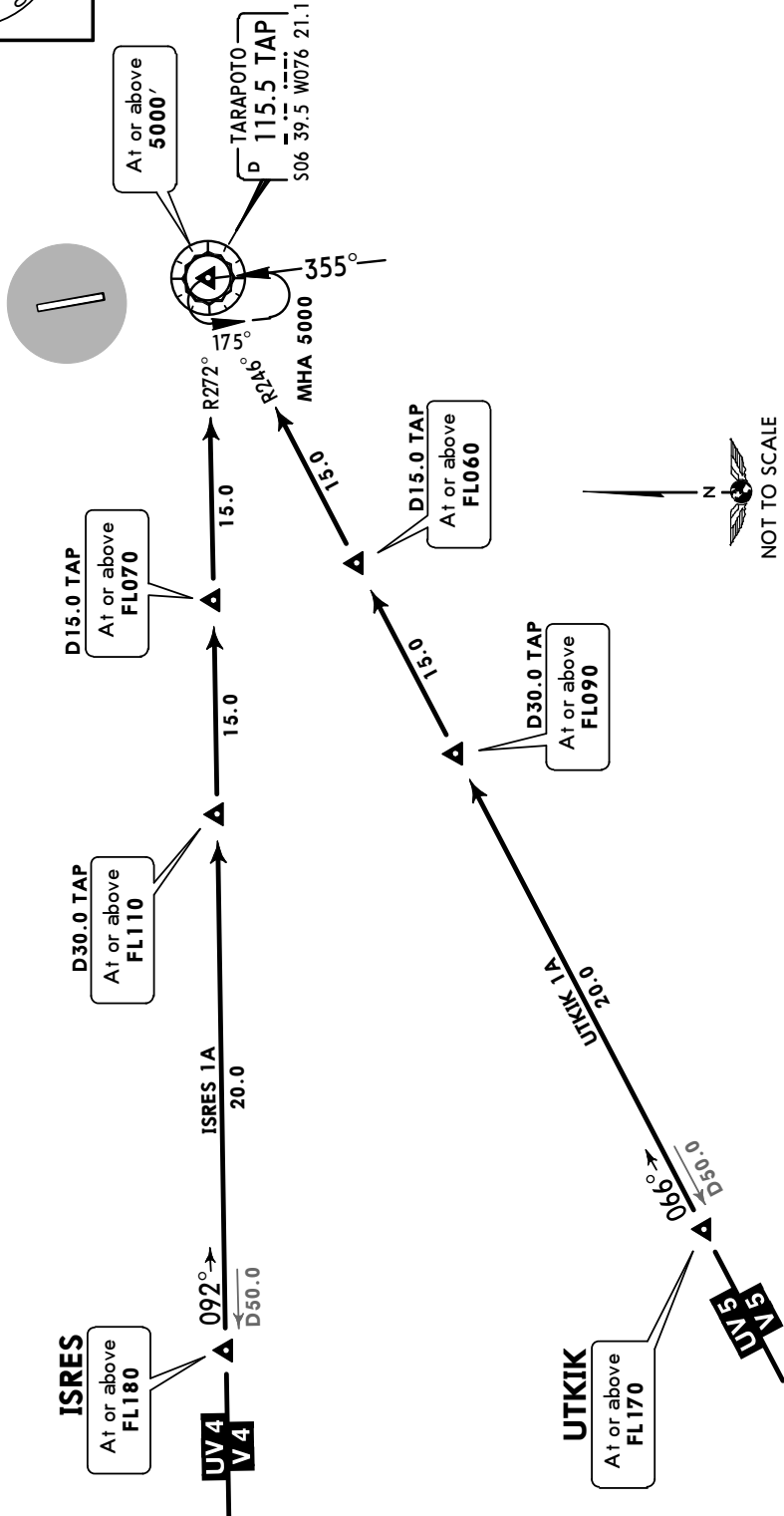
*ATIS
130.85

Apt Elev
868'

Alt Set: hPa Trans level: By ATC Trans alt: 5000'



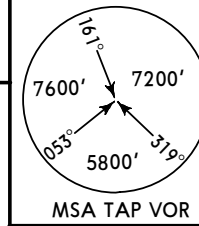
ISRES 1A [ISRE1A], UTKIK 1A [UTKI1A]
ARRIVALS
(RWY 35)



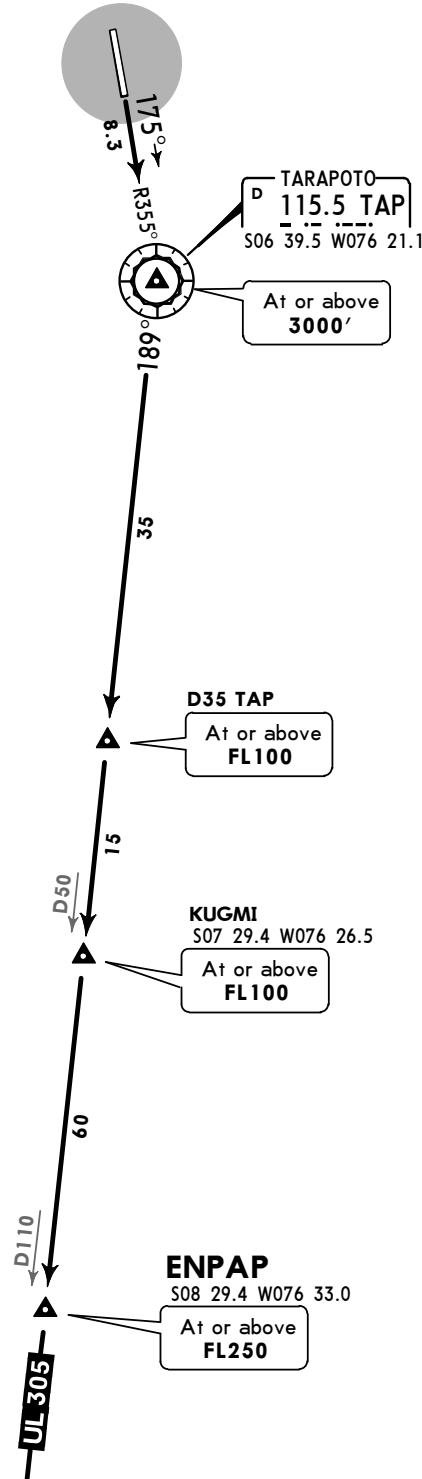
STAR	ROUTING
ISRES 1A	Cross ISRES at or above FL180, continue descent on TAP R-272 (heading 092°) to cross D30.0 TAP at or above FL110, D15.0 TAP at or above FL070, TAP VOR at or above 5000', then as instructed by ATC.
UTKIK 1A	Cross UTKIK at or above FL170, continue descent on TAP R-246 (heading 066°) to cross D30.0 TAP at or above FL090, D15.0 TAP at or above FL060, then as instructed by ATC.

Apt Elev
 868'

Trans level: By ATC Trans alt: 5000'



ENPAP 1F DEPARTURE
[ENPA1F]
 (RWY 17)

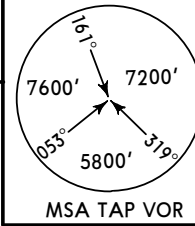


INITIAL CLIMB

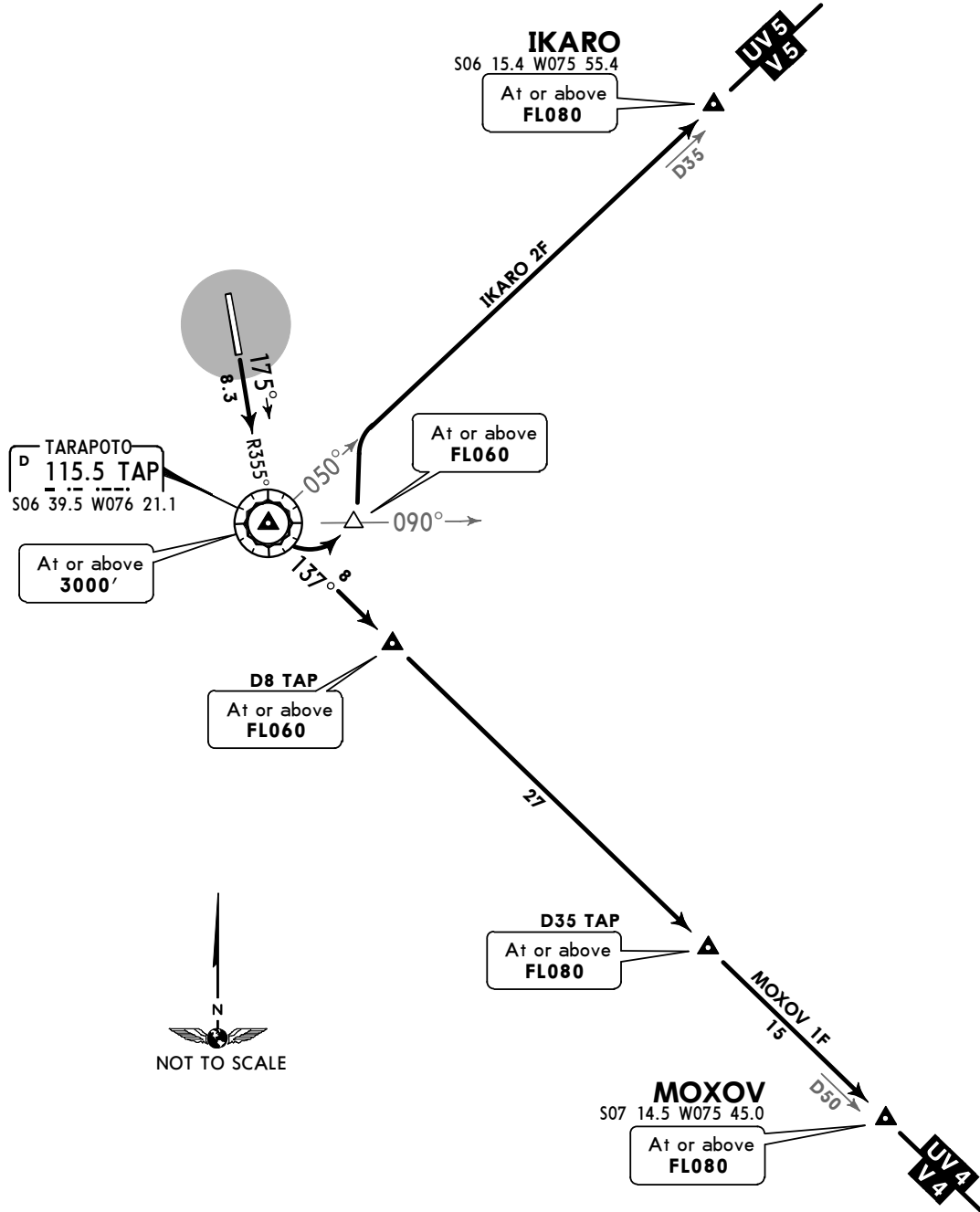
Climb on TAP R-355 (heading 175°) to cross TAP VOR at or above 3000', turn RIGHT and climb to ENPAP on TAP R-189 (heading 189°), cross D35 TAP at or above FL100, KUGMI at or above FL100, ENPAP at or above FL250, continue climb to authorized flight level.

Apt Elev
868'

Trans level: By ATC Trans alt: 5000'



IKARO 2F [IKAR2F], MOXOV 1F [MOXO1F]
DEPARTURES
(RWY 17)



INITIAL CLIMB

Climb on TAP R-355 (heading 175°) to cross TAP VOR at or above 3000'.

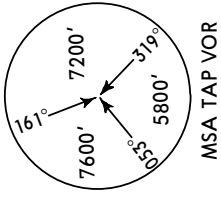
SID

ROUTING

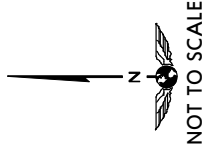
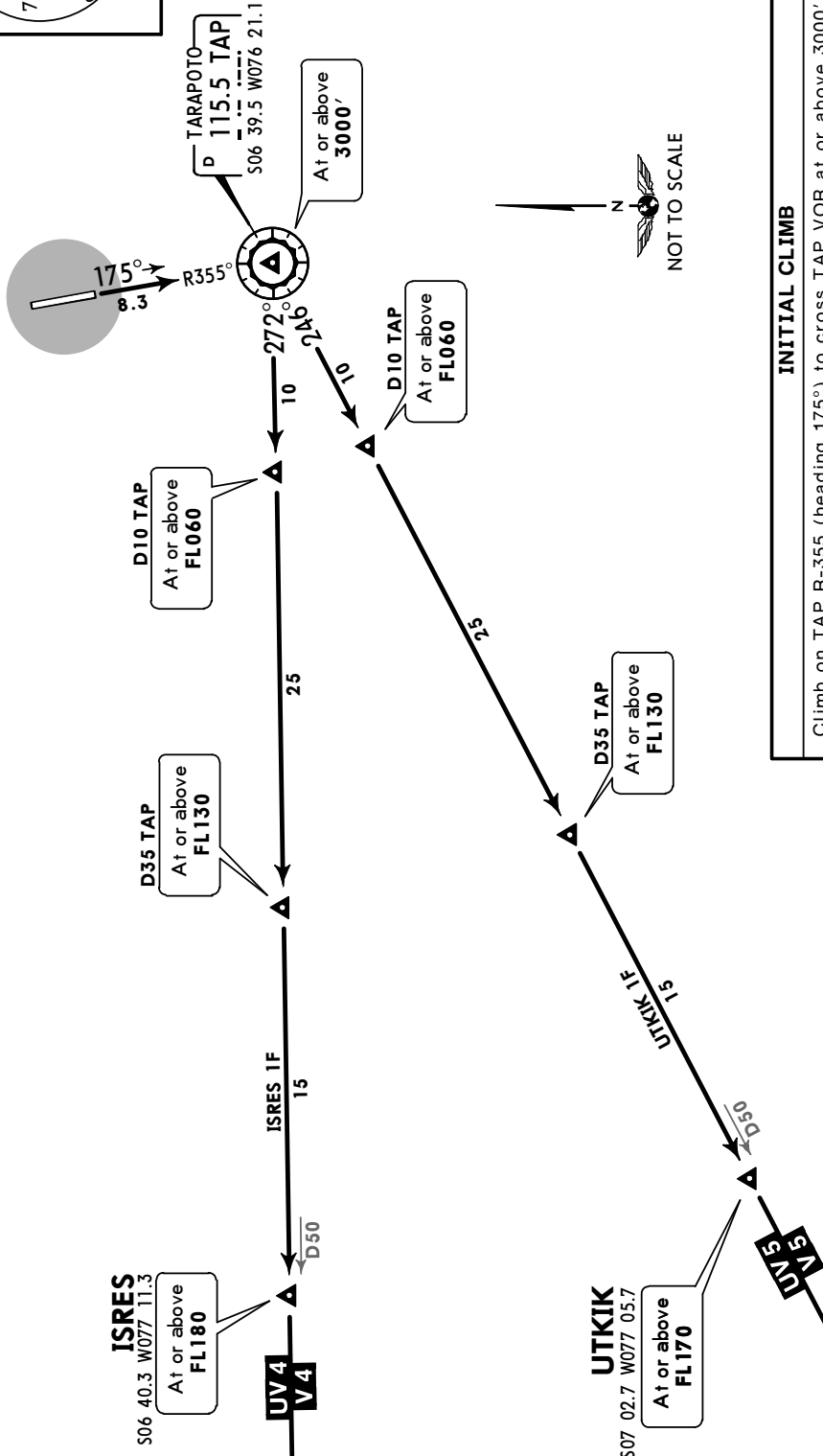
IKARO 2F	At TAP VOR, turn LEFT to intercept TAP R-050 (heading 050°) cross TAP R-090 at or above FL060, cross IKARO at or above FL080, continue climb to authorized flight level.
MOXOV 1F	At TAP VOR, turn LEFT to intercept TAP R-137 (heading 137°) cross D8 TAP at or above FL060, cross D35 TAP at or above FL080, cross MOXOV at or above FL080, continue climb to authorized flight level.

Apt Elev
868'

Trans level: By ATC Trans alt: 5000'



ISRES 1F [ISRE1F],
UTKIK 1F [UTKI1F]
DEPARTURES
(RWY 17)

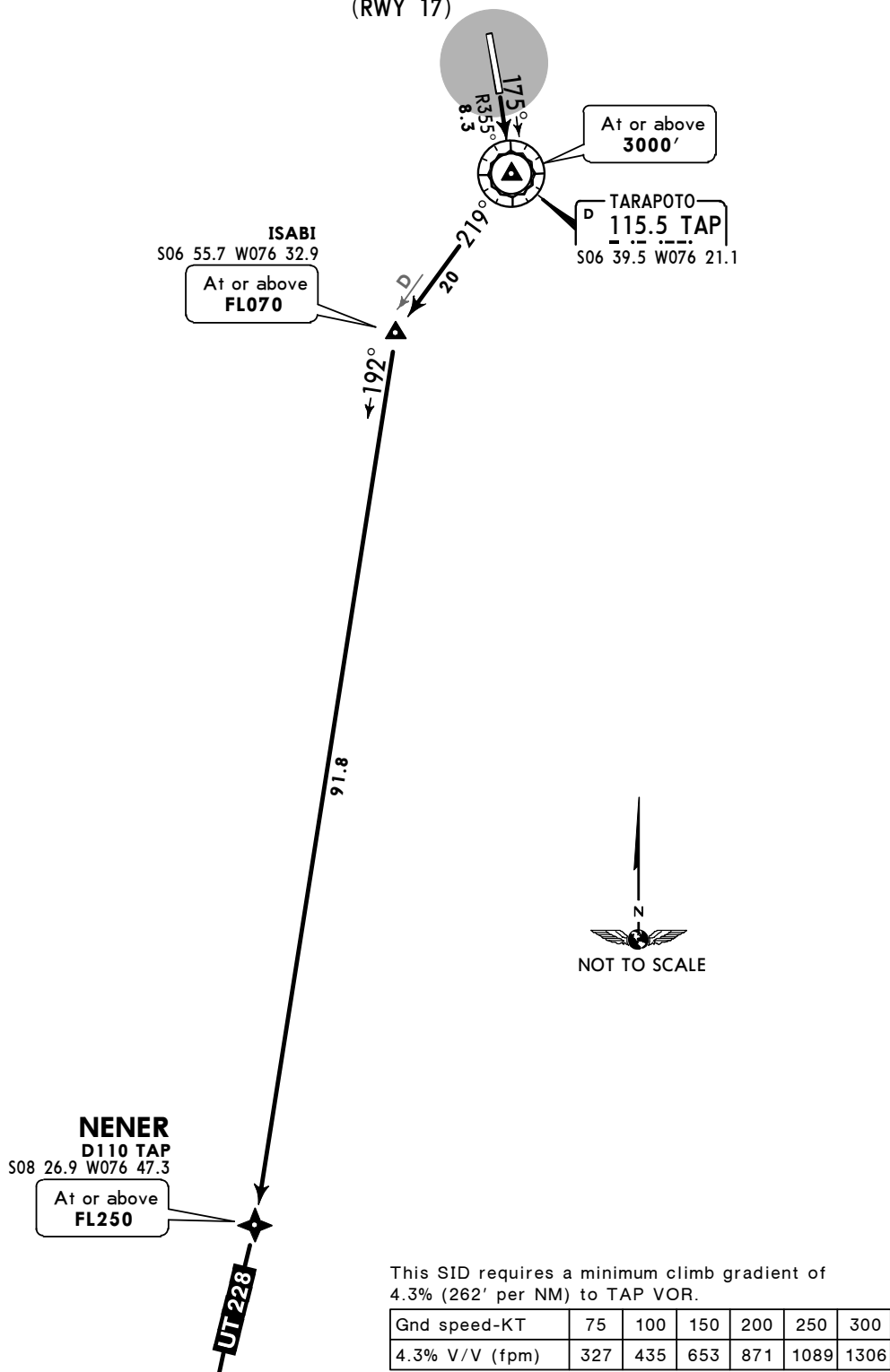


INITIAL CLIMB	
Climb on TAP R-355 (heading 175°) to cross TAP VOR at or above 3000'.	
ROUTING	
SID	
ISRES 1F	At TAP VOR, turn RIGHT to intercept TAP R-272 (heading 272°) to cross D10 TAP at or above FL060, D35 TAP at or above FL130, ISRES at or above FL180, continue climb to authorized flight level.
UTKIK 1F	At TAP VOR, turn RIGHT to intercept TAP R-246 (heading 246°) to cross D10 TAP at or above FL060, D35 TAP at or above FL130, UTKIK at or above FL170, continue climb to authorized flight level.

Apt Elev
868'

Trans level: By ATC Trans alt: 5000'
RNAV 5 required from ISABI to NENER.

NENER 1 DEPARTURE
[NENER1]
(RWY 17)

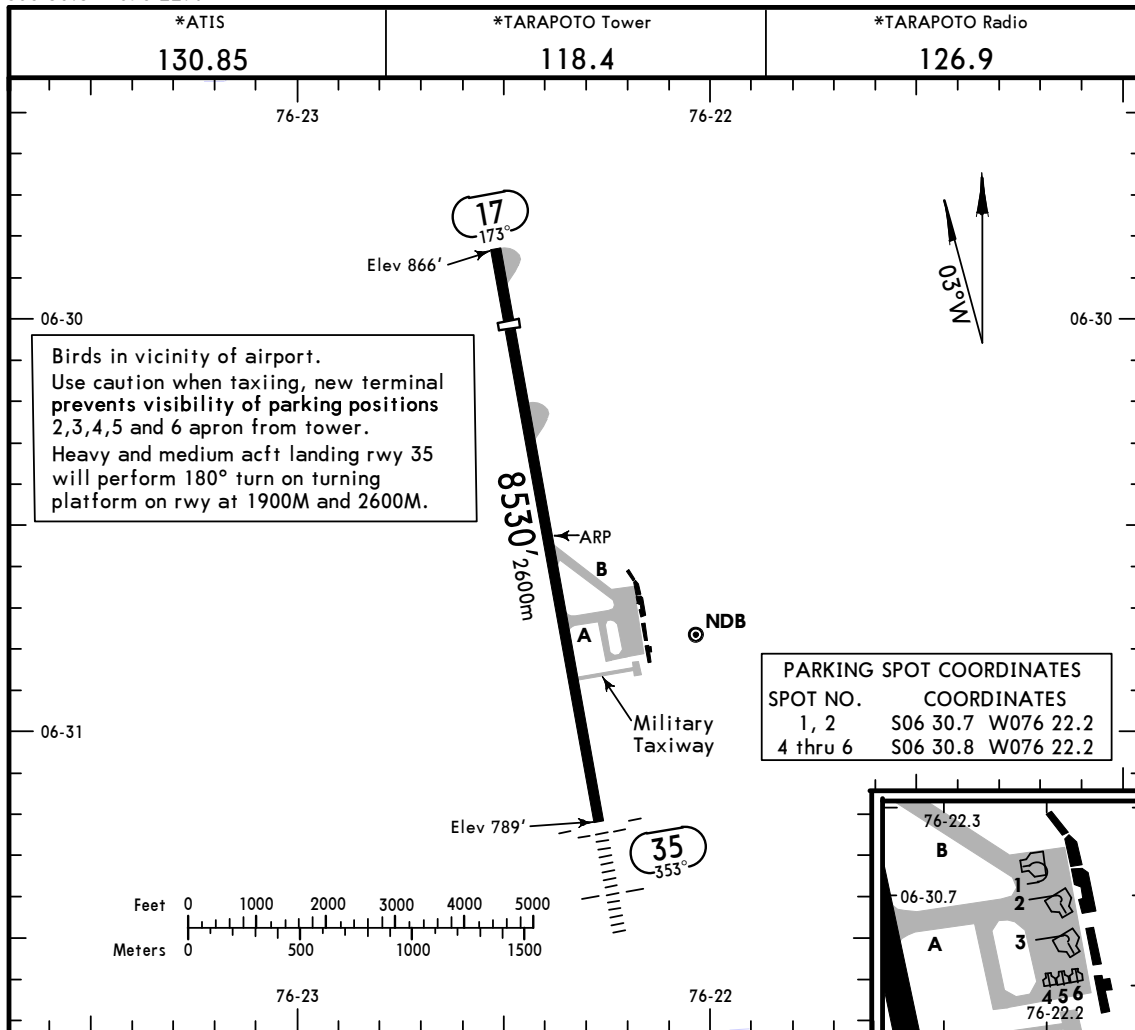


This SID requires a minimum climb gradient of 4.3% (262' per NM) to TAP VOR.

Gnd speed-KT	75	100	150	200	250	300
4.3% V/V (fpm)	327	435	653	871	1089	1306

INITIAL CLIMB

Climb on TAP R-355 (heading 175°) to cross TAP VOR at or above 3000', turn RIGHT to intercept TAP R-219 (heading 219°) cross ISABI (D20 TAP) at or above FL070, turn LEFT heading 192° direct to NENER, cross NENER at or above FL250.



ADDITIONAL RUNWAY INFORMATION

RWY		USABLE LENGTHS		TAKE-OFF	WIDTH
		LANDING BEYOND Threshold	Glide Slope		
17	RL ① PAPI-L (angle 3.5°)	7382' 2250m			148'
35	RL SALS PAPI-L (angle 3.0°)				45m

① PAPI available only for Daytime operations in VMC.

TAKE-OFF

All Rwy's

	Take-Off Alternate Apt. Filed	Take-Off Alternate Apt. Not Filed
1 Eng	1600m or Higher Available Landing Minimums	
2 Eng	1 hr alternate (1 Eng Inop) 1600m	Available Landing Minimums
3 or more Eng	2 hr alternate (1 Eng Inop) 800m	

SPST/TPP

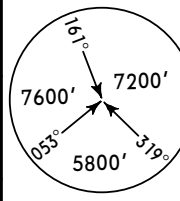
JEPPESEN CAT A, B & C

TARAPOTO, PERU

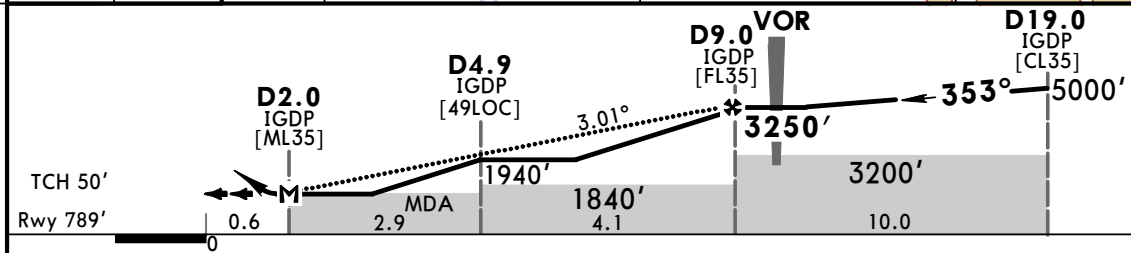
CAP FAP GUILLERMO DEL CASTILLO (11-1) 16 DEC 16

LOC Rwy 35

*ATIS 130.85		*TARAPOTO Tower 118.4		*TARAPOTO Radio 126.9	
LOC IGDP 109.7	Final Apch Crs 353°	Minimum Alt D9.0 IGDP 3250' (2461')	MDA(H) (CONDITIONAL) 1350' (561')	Apt Elev 868' Rwy 789'	
<p>MISSED APCH: Climb outbound on heading 353° to D0.5 IGDP, turn LEFT maintaining maximum 185 KT until intercepting TAP VOR R-329 inbound to TAP VOR then proceed on TAP VOR R-171° to D19.0 IGDP and hold. Do not turn until D0.5 IGDP.</p>					
Alt Set: hPa		Rwy Elev: 29 hPa	Trans level: By ATC	Trans alt: 5000'	
<p>1. IGDP DME required. 2. MAX: holding pattern 230 KT, circling 160 KT.</p>					



RECOMMENDED ALTITUDES	
IGDP DME	ALTITUDE
6.0	2260'
5.0	1940'
4.0	1620'
3.0	1300'



Gnd speed-Kts	70	90	100	120	140	160	SALS	PAPI	↑ on 353° hdg	D0.5 IGDP
Descent Angle	3.01°	373	479	532	639	745				

STRAIGHT-IN LANDING RWY 35				CIRCLE-TO-LAND			
Missed apch climb gradient mim 2.5%		Missed apch climb gradient mim 3.0%		Not Authorized East of Airport			
MDA(H) 1480' (691')		MDA(H) 1350' (561')					
ALS out		ALS out		Max Kts			
A	1.5 km	1.5 km		MDA(H) 1700' (832') - 1.6 km			
B	2.0 km	1.8 km		100 2000' (1132') - 2.0 km			
C	NOT APPLICABLE	NOT APPLICABLE		135 2600' (1732') - 4.0 km			
D	NOT APPLICABLE	NOT APPLICABLE		160 NOT APPLICABLE			

CHANGES: Rwy 35 elevation, MDH, hold bearings.

© JEPPESEN, 2015, 2016. ALL RIGHTS RESERVED.

SPST/TPP

16 DEC 16



TARAPOTO, PERU

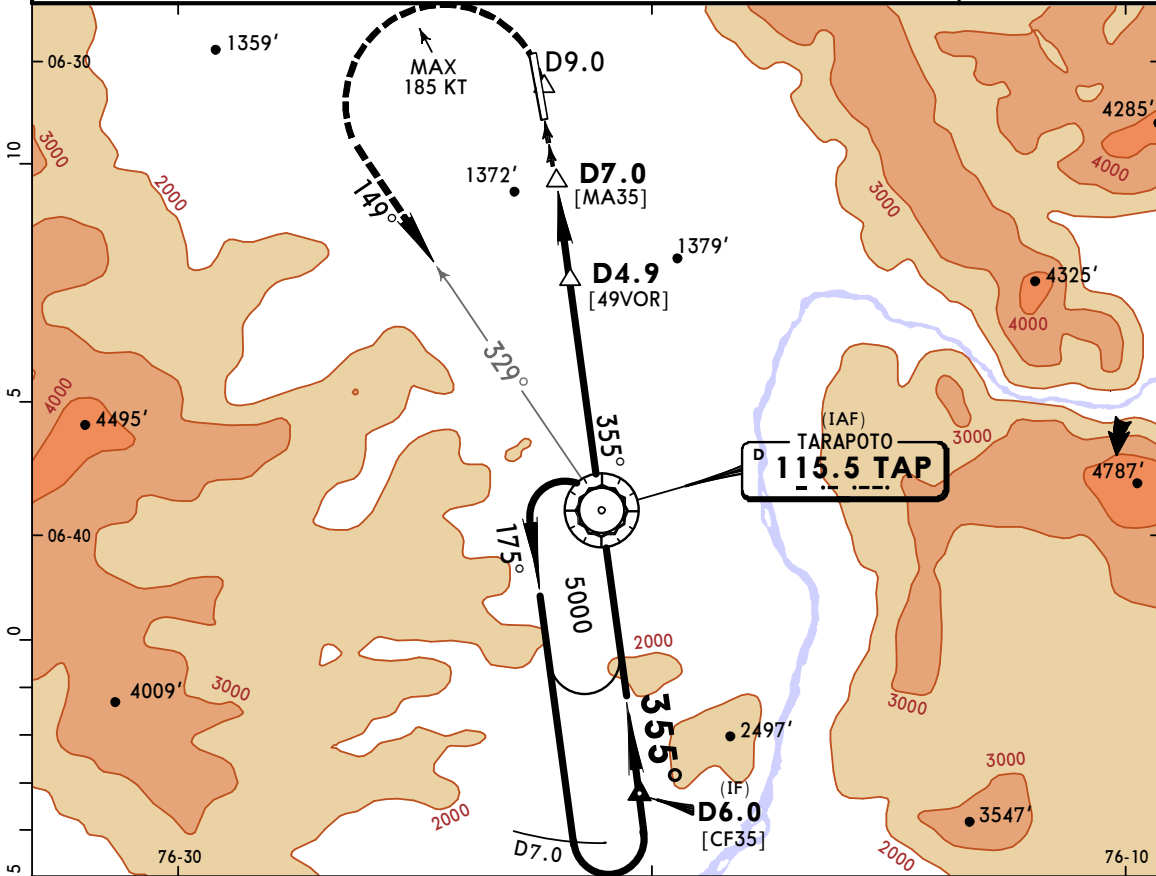
CAP FAP GUILLERMO DEL CASTILLO

(13-1)

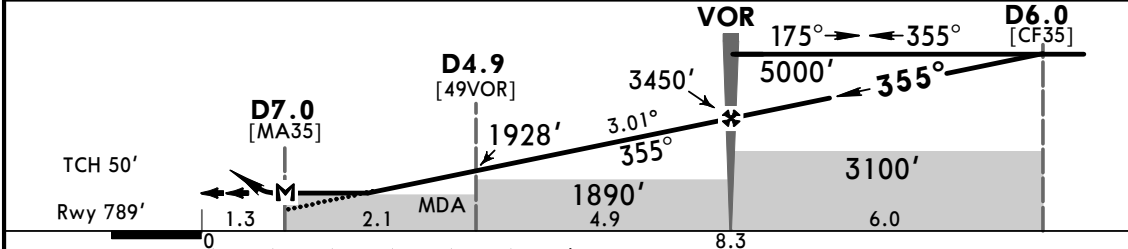
CAT A, B & C

VOR Y Rwy 35

*ATIS 130.85		*TARAPOTO Tower 118.4		*TARAPOTO Radio 126.9	
VOR TAP 115.5	Final Apch Crs 355°	Minimum Alt (CONDITIONAL) Refer to Profile	MDA(H) (CONDITIONAL) 1630' (841')	Apt Elev 868'	Rwy 789'
MISSED APCH: Climb outbound on TAP VOR R-355 to D9.0, turn LEFT to intercept and proceed inbound on TAP VOR R-329 to TAP VOR and hold at 5000'.					<p>MSA TAP VOR</p>
Alt Set: hPa		Rwy Elev: 29 hPa		Trans level: By ATC	
1. DME required.		2. MAX: holding pattern 230 KT, circling 160 KT.		Trans alt: 5000'	



TAP DME	5.0	4.0	3.0	VOR
ALTITUDE	1890'	2210'	2530'	3450'



Gnd speed-Kts	70	90	100	120	140	160
Descent Angle 3.01°	373	479	532	639	745	852

MAP at D7.0

SALS PAPI

TAP VOR 115.5 R-355

D9.0

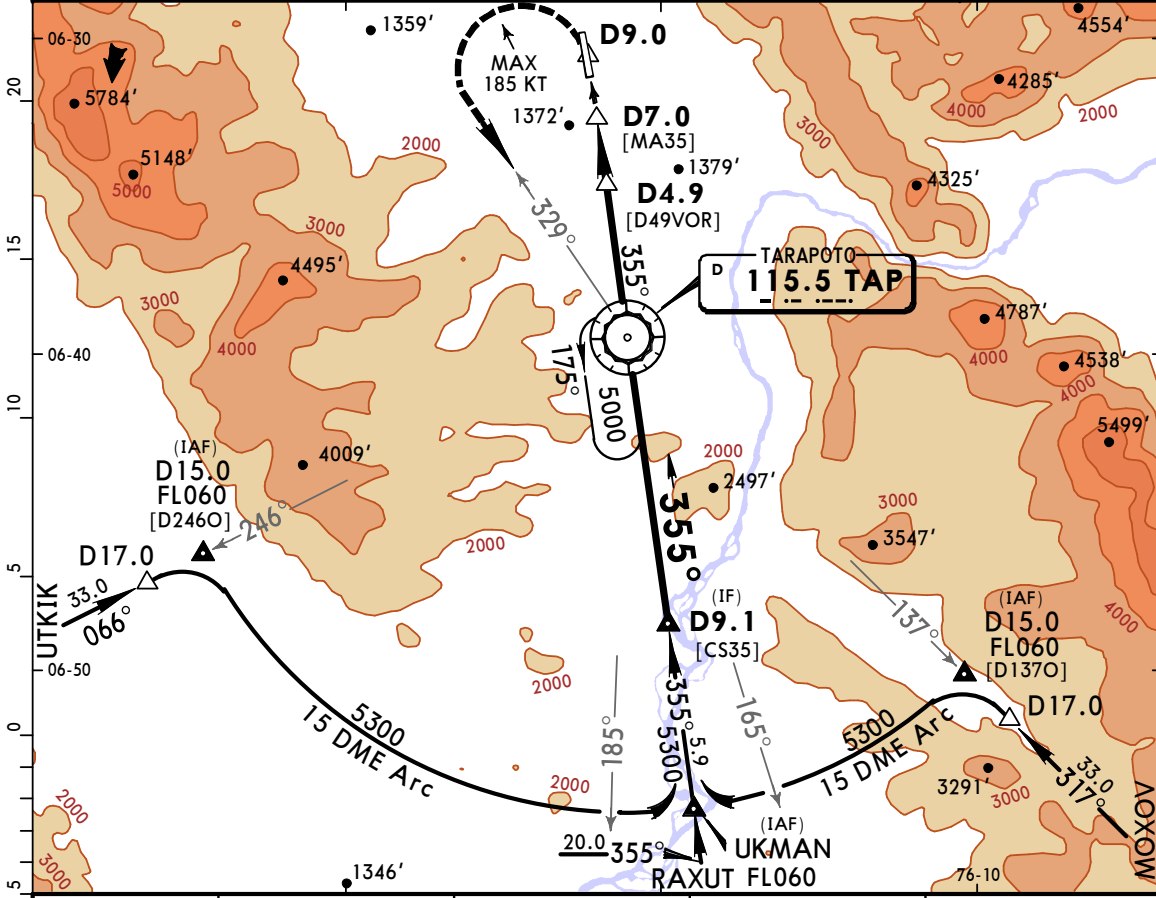
STRAIGHT-IN LANDING RWY 35		CIRCLE-TO-LAND	
Missed apch climb gradient mim 3.0%		Missed apch climb gradient mim 2.5%	
MDA(H) 1630' (841')		MDA(H) 1690' (901')	
ALS out	ALS out	Not Authorized East of Airport	
A	1.6 km	100	1700' (832') -1.6 km
B	2.0 km	135	2000' (1132') -2.0 km
C	2.4 km	160	2600' (1732') -4.0 km
D	NA	D	NA

PANS OPS

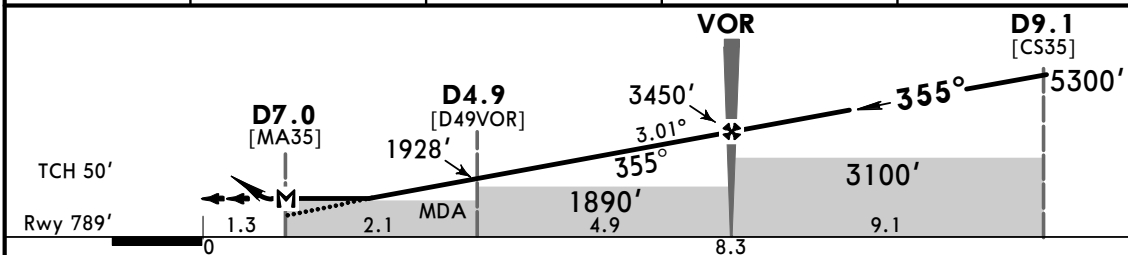
CHANGES: Rwy 35 elevation, MDH, descent angle, TAP NDB removed.

© JEPPESEN, 2011, 2016. ALL RIGHTS RESERVED.

*ATIS 130.85		*TARAPOTO Tower 118.4		*TARAPOTO Radio 126.9	
VOR TAP 115.5	Final Apch Crs 355°	Minimum Alt (CONDITIONAL) Refer to Profile	MDA(H) (CONDITIONAL) 1630' (841')	Apt Elev 868'	Rwy 789'
MISSED APCH: Climb outbound on TAP VOR R-355 to D9.0, turn LEFT to intercept and proceed inbound on TAP VOR R-329 to TAP VOR and hold at 5000'.					
Alt Set: hPa		Rwy Elev: 29 hPa	Trans level: By ATC	Trans alt: 5000'	
1. DME required.		2. MAX: holding pattern 230 KT, circling 160 KT.		MSA TAP VOR	



TAP DME	5.0	4.0	3.0	VOR
ALTITUDE	1890'	2210'	2530'	3450'



Gnd speed-Kts	70	90	100	120	140	160	SALS	TAP 115.5	D9.0
Descent Angle 3.01°	373	479	532	639	745	852			
MAP at D7.0							PAPI		

STRAIGHT-IN LANDING RWY 35			CIRCLE-TO-LAND		
Missed apch climb gradient mim 3.0%			Missed apch climb gradient mim 2.5%		
MDA(H) 1630' (841')			MDA(H) 1690' (901')		
ALS out			ALS out		
A	1.6 km	1.6 km	Max Kts	MDA(H)	
B	2.0 km	2.0 km	100	1700' (832') -1.6 km	
C	2.4 km	2.4 km	135	2000' (1132') -2.0 km	
D	NA	NA	160	2600' (1732') -4.0 km	
PANS OPS			D	NA	