

SPTU/PEM

JEPPESEN PUERTO MALDONADO, PERU

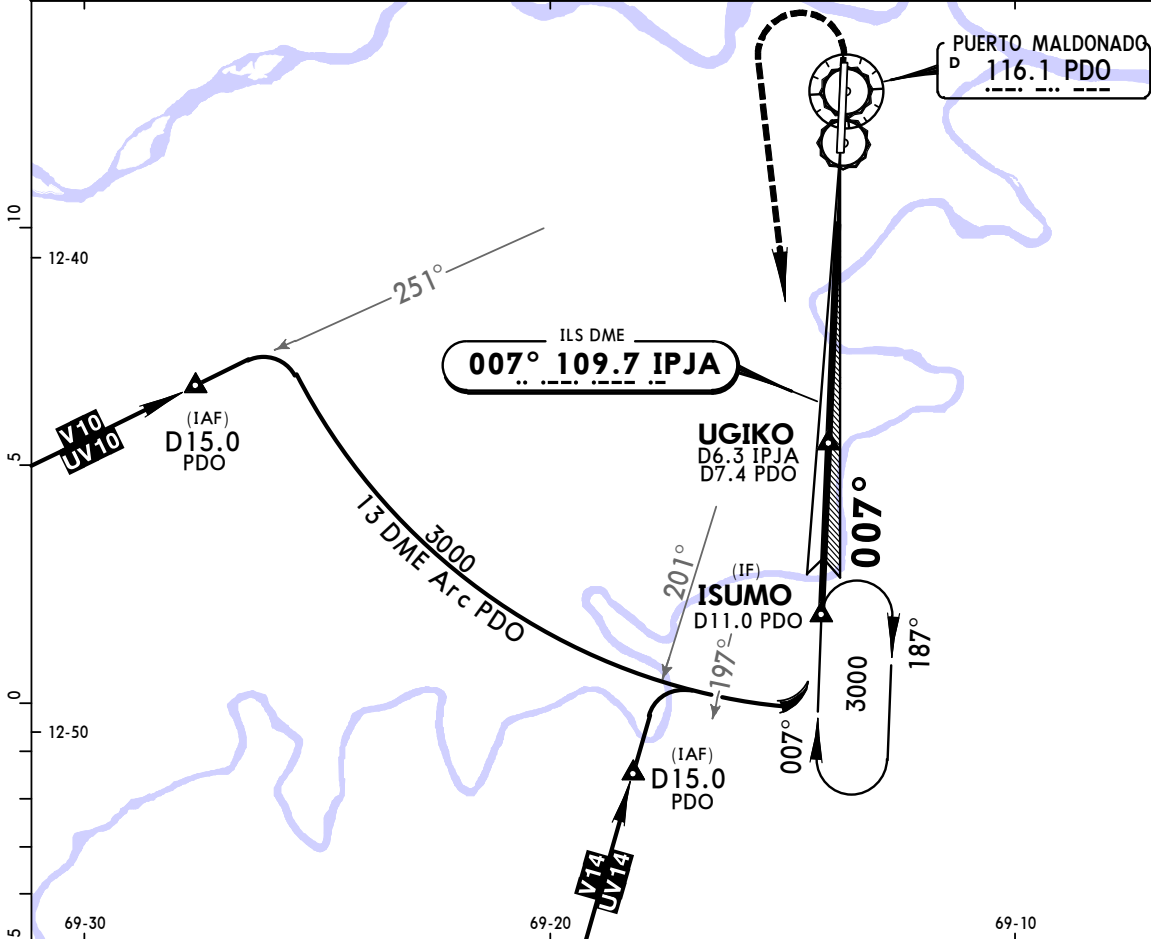
8 MAY 15 (11-1)

DESCENT ALPHA

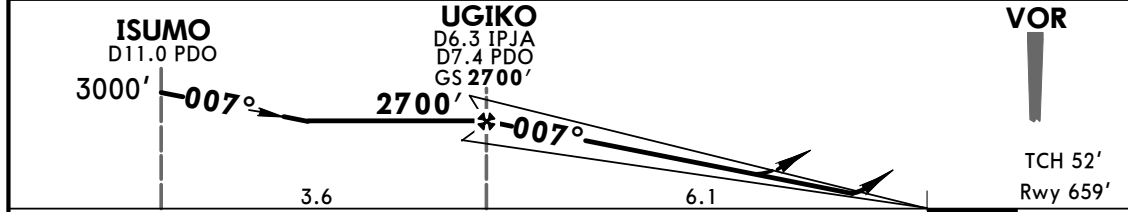
PADRE JOSE ALDAMIZ

VOR DME ILS DME Rwy 01

*PUERTO MALDONADO (FIS)			*PUERTO MALDONADO Tower		
126.9			118.5		
LOC IPJA 109.7	Final Apch Crs 007°	GS UGIKO 2700' (2041')	ILS DA(H) 920' (261')	Apt Elev 659' Rwy 659'	3000'
MISSED APCH: Climb to 1500', turn LEFT and return to ISUMO.					
Alt Set: hPa	Rwy Elev: 24 hPa	Trans level: By ATC	Trans alt: 4000'	MSA PDO VOR	



LOC (GS out)	IPJA DME	5.0	4.0	3.0	2.0
	ALTITUDE	2260'	1940'	1620'	1300'



Gnd speed-Kts	70	90	100	120	140	160	PAPI	1500'	ISUMO
GS	3.00°	372	478	531	637	743			
MAP upon reaching MDA									

STRAIGHT-IN LANDING RWY 01				CIRCLE-TO-LAND			
ILS DA(H) 920' (261')		LOC (GS out) MDA(H) 1000' (341')		Max Kts		MDA(H)	
A					100	1200' (541') -3 km	
B					135		
C	1200m	1600m		180			
D					205	1400' (741') -5 km	

CHANGES: None.

© JEPPESEN, 2014. ALL RIGHTS RESERVED.

SPTU/PEM

JEPPESEN PUERTO MALDONADO, PERU

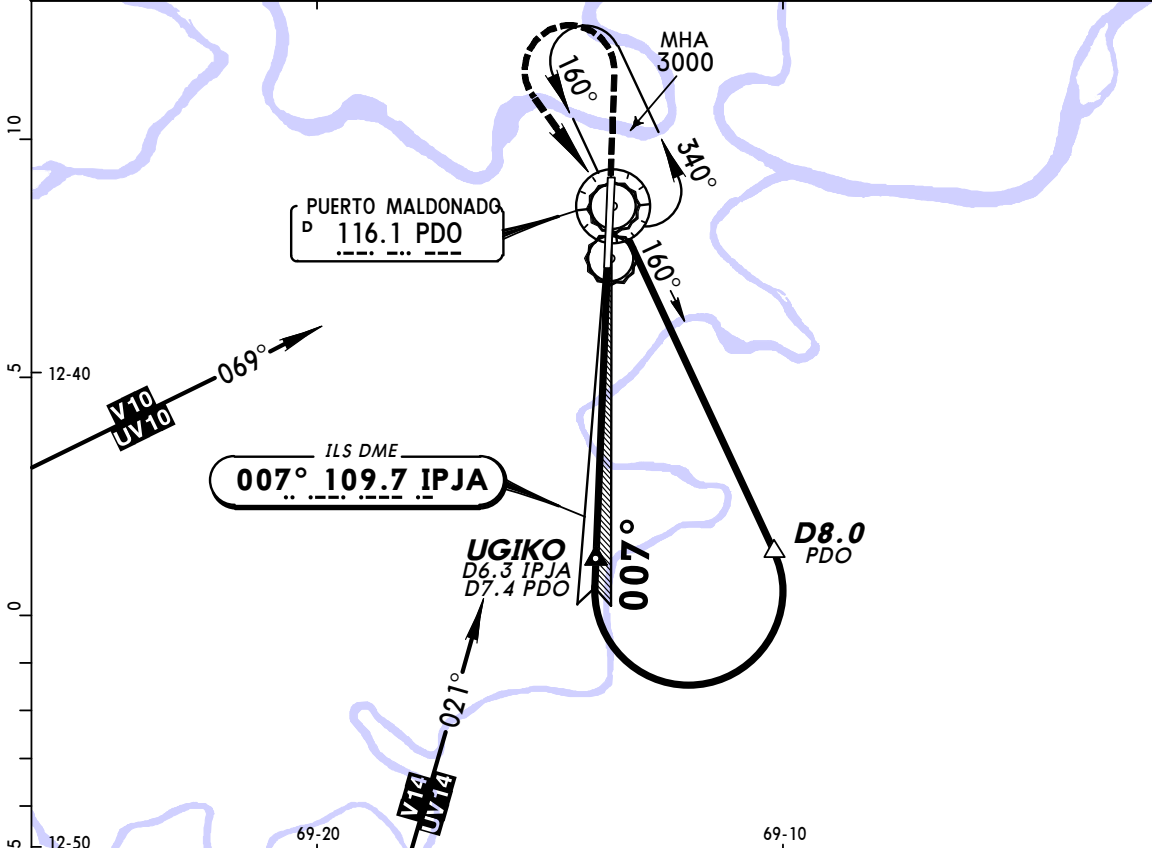
3 JAN 14 (11-2)

DESCENT BRAVO

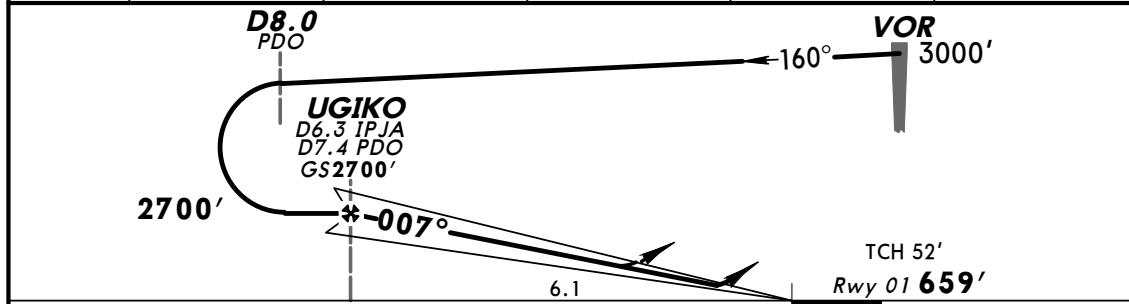
PADRE JOSE ALDAMIZ

VOR DME ILS DME Rwy 01

*PUERTO MALDONADO (FIS)				*PUERTO MALDONADO Tower	
126.9				118.5	
LOC IPJA 109.7	Final Apch Crs 007°	GS UGIKO 2700' (2041')	ILS DA(H) 920' (261')	Apt Elev 659'	3000'
MISSED APCH: Climb to 1500', turn LEFT and return to PDO VOR and hold.				Rwy 01 659'	
Alt Set: hPa	Rwy Elev: 24 hPa	Trans level: By ATC	Trans alt: 4000'	MSA PDO VOR	



LOC (GS out)	IPJA DME	5.0	4.0	3.0	2.0
	ALTITUDE	2260'	1940'	1620'	1300'



Gnd speed-Kts	70	90	100	120	140	160	PAPI	1500'	PDO
GS	3.00°	372	478	531	637	743			
MAP upon reaching MDA									

STRAIGHT-IN LANDING RWY 01				CIRCLE-TO-LAND			
ILS DA(H) 920' (261')		LOC (GS out) MDA(H) 1000' (341')		Max Kts		MDA(H)	
1200m		1600m		100		1200' (541') - 3 km	
				135			
				180		1400' (741') - 5 km	
				205			

CHANGES: New procedure.

© JEPPESEN, 2014. ALL RIGHTS RESERVED.

SPTU/PEM

PADRE JOSE ALDAMIZ

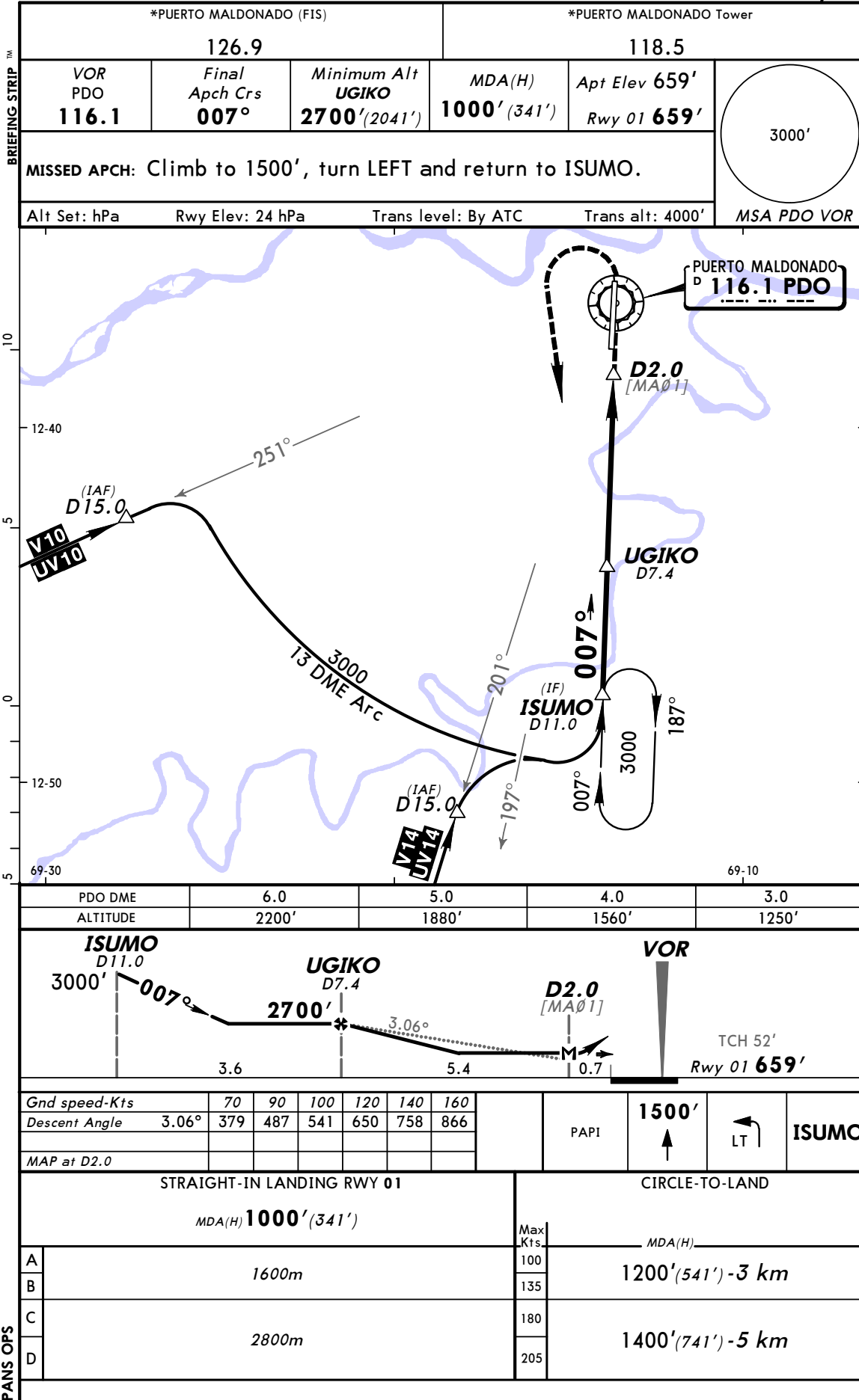
JEPPESEN

3 JAN 14

(13-1)

PUERTO MALDONADO, PERU

DESCENT CHARLIE VOR DME Rwy 01



SPTU/PEM

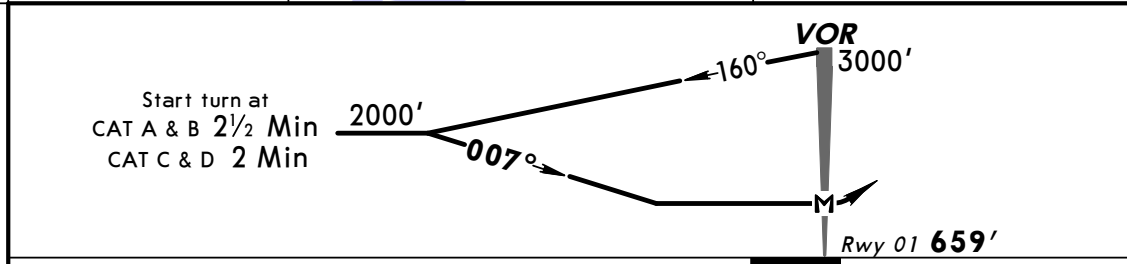
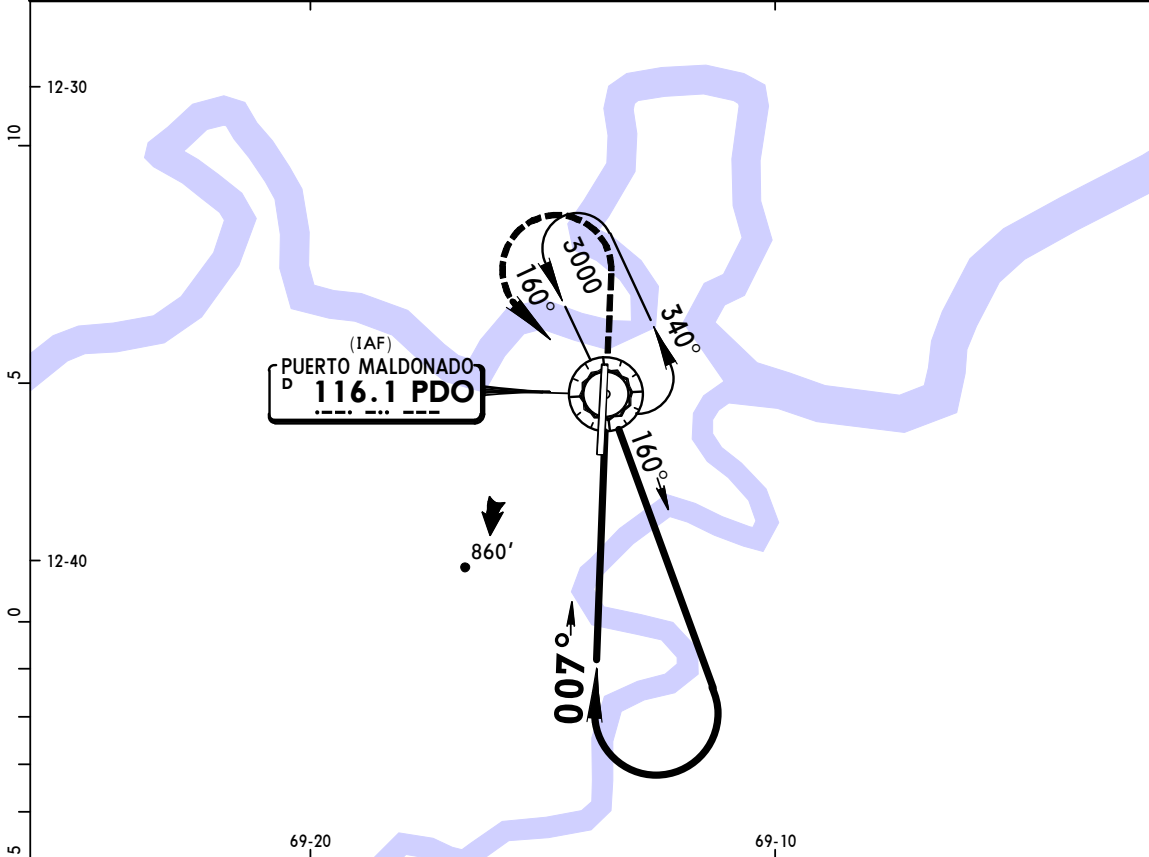
PADRE JOSE ALDAMIZ

JEPPESEN

14 OCT 11
Eff 20 Oct (13-2)

PUERTO MALDONADO, PERU
DESCENT DELTA VOR Rwy 01

*PUERTO MALDONADO (FIS) 126.9			*PUERTO MALDONADO Tower 118.5		
VOR PDO 116.1	Final Apch Crs 007°	No FAF	MDA(H) 1000' (341')	Apt Elev 659' Rwy 01 659'	3000'
MISSED APCH: Climb to 1500', turn LEFT and return to PDO VOR and hold.					
Alt Set: hPa	Rwy Elev: 24 hPa	Trans level: By ATC	Trans alt: 4000'	MSA PDO VOR	



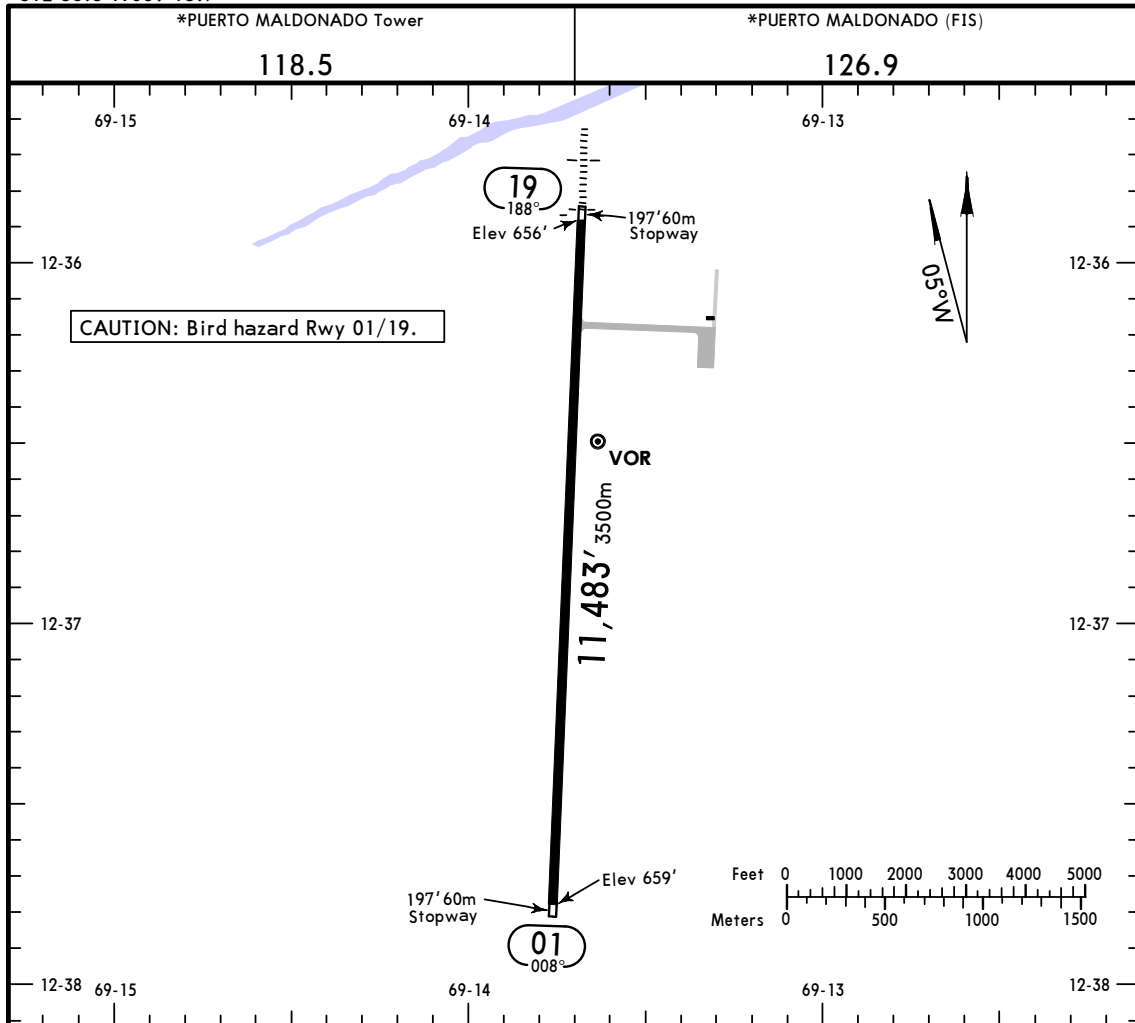
MAP at VOR	PAPI	1500'	LT	PDO 116.1
------------	------	-------	----	-----------

STRAIGHT-IN LANDING RWY 01		CIRCLE-TO-LAND	
MDA(H) 1000' (341')		MDA(H)	
A		100	
B	1600m	135	1200' (541') - 3.0 km
C		180	
D	2800m	205	1400' (741') - 5.0 km

PANS OPS

CHANGES: Tower frequency.

© JEPPESEN, 2001, 2011. ALL RIGHTS RESERVED.



ADDITIONAL RUNWAY INFORMATION

RWY	USABLE LENGTHS	LANDING BEYOND		TAKE-OFF	WIDTH
		Threshold	Glide Slope		
01	PAPI (angle 3.0°)		10,473' 3192m		148'
19	SALSF PAPI (angle 2.8°)				45m

TAKE-OFF

	All Rwys	
	Take-Off Alternate Apt. Filed	Take-Off Alternate Apt. Not Filed
1 Eng	1600m or Higher Available Landing Minimums	
2 Eng	1 hr alternate (1 Eng Inop) 1600m	Available Landing Minimums
3 or more Eng	2 hr alternate (1 Eng Inop) 800m	