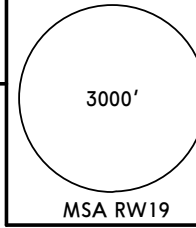
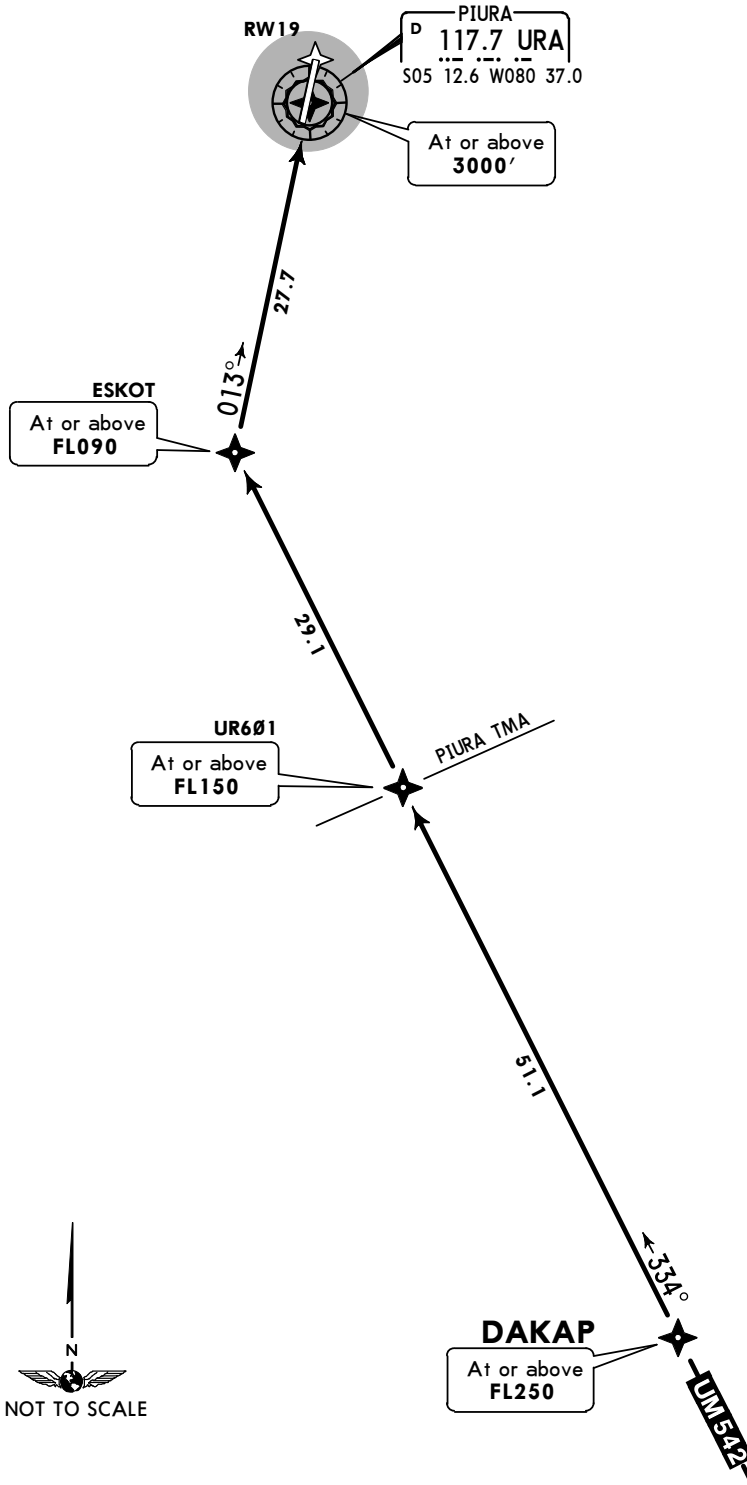


Apt Elev  
116'

Alt Set: hPa Trans level: By ATC Trans alt: 3000'  
1. RNAV 1 or RNP 1 approval required.  
2. GNSS required.



DAKAP 1A [DAKA1A]  
RNAV (GNSS) ARRIVAL  
(RWY 19)

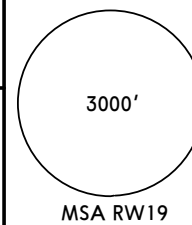


ROUTING

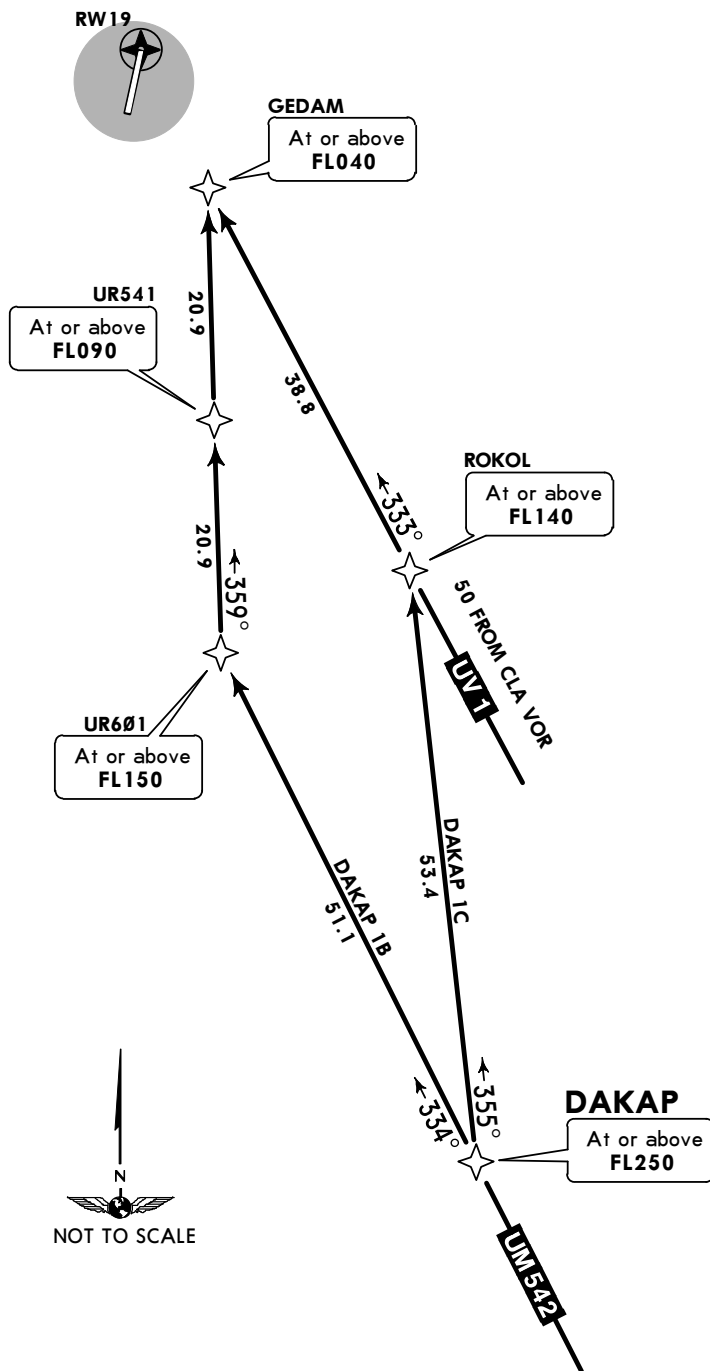
Descend on route UM-542 to cross DAKAP at or above FL250, continue via ESKOT to URA VOR in accordance with ATC instructions.

Apt Elev  
116'

Alt Set: hPa Trans level: By ATC Trans alt: 3000'



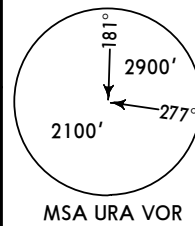
DAKAP 1B [DAKA1B], DAKAP 1C [DAKA1C]  
RNAV ARRIVALS



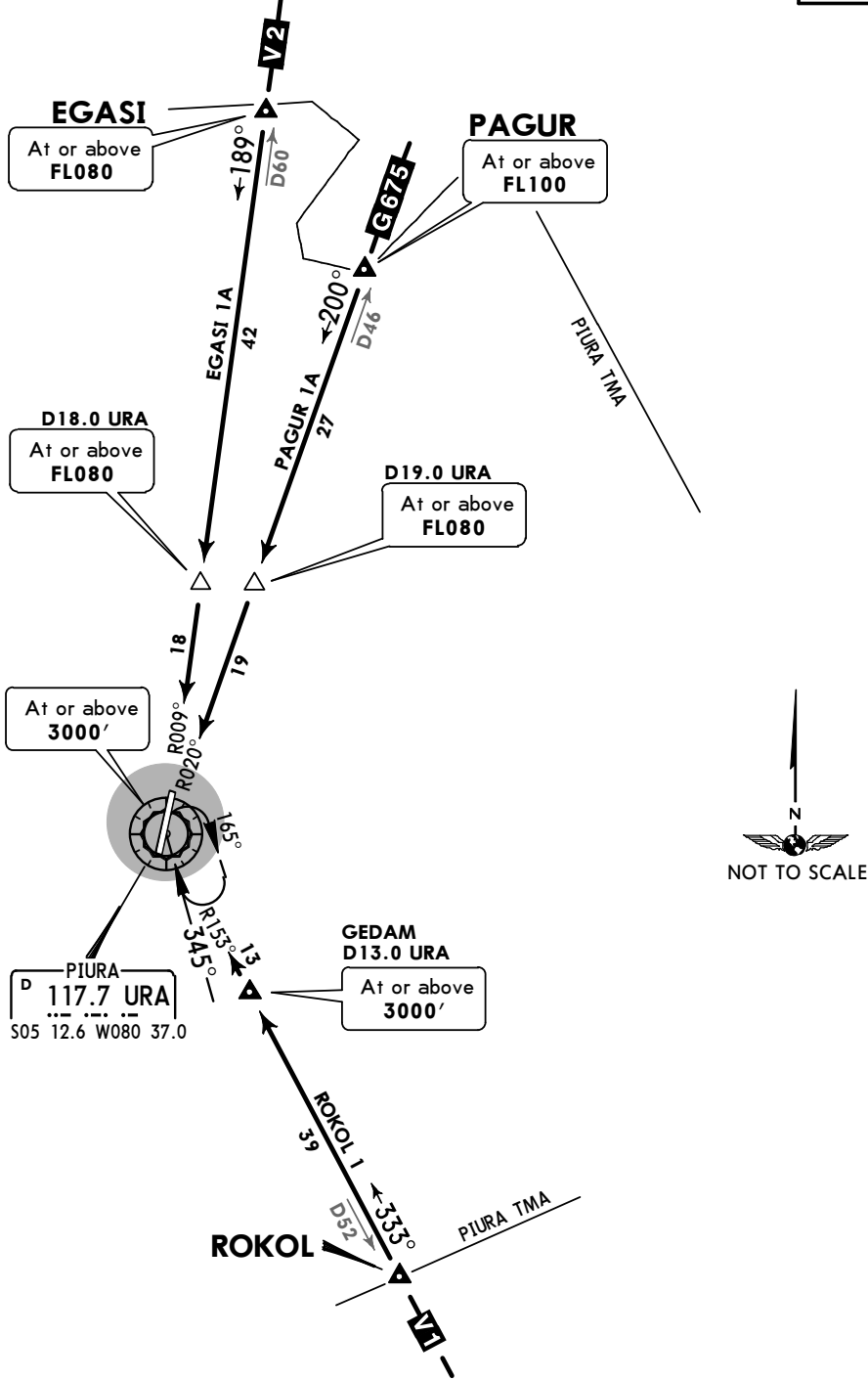
STAR	ROUTING
DAKAP 1B	Descend from route UM-542 to DAKAP, continue to UR601, turn RIGHT to UR541 and then to GEDAM.
DAKAP 1C	Descend from route UM-542 to DAKAP, turn RIGHT to ROKOL, turn LEFT to GEDAM.

Apt Elev  
116'

Alt Set: hPa Trans level: By ATC Trans alt: 3000'



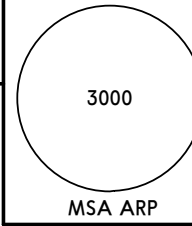
EGASI 1A [EGAS1A], PAGUR 1A [PAGU1A]  
ROKOL 1 [ROKOL1]  
ARRIVALS



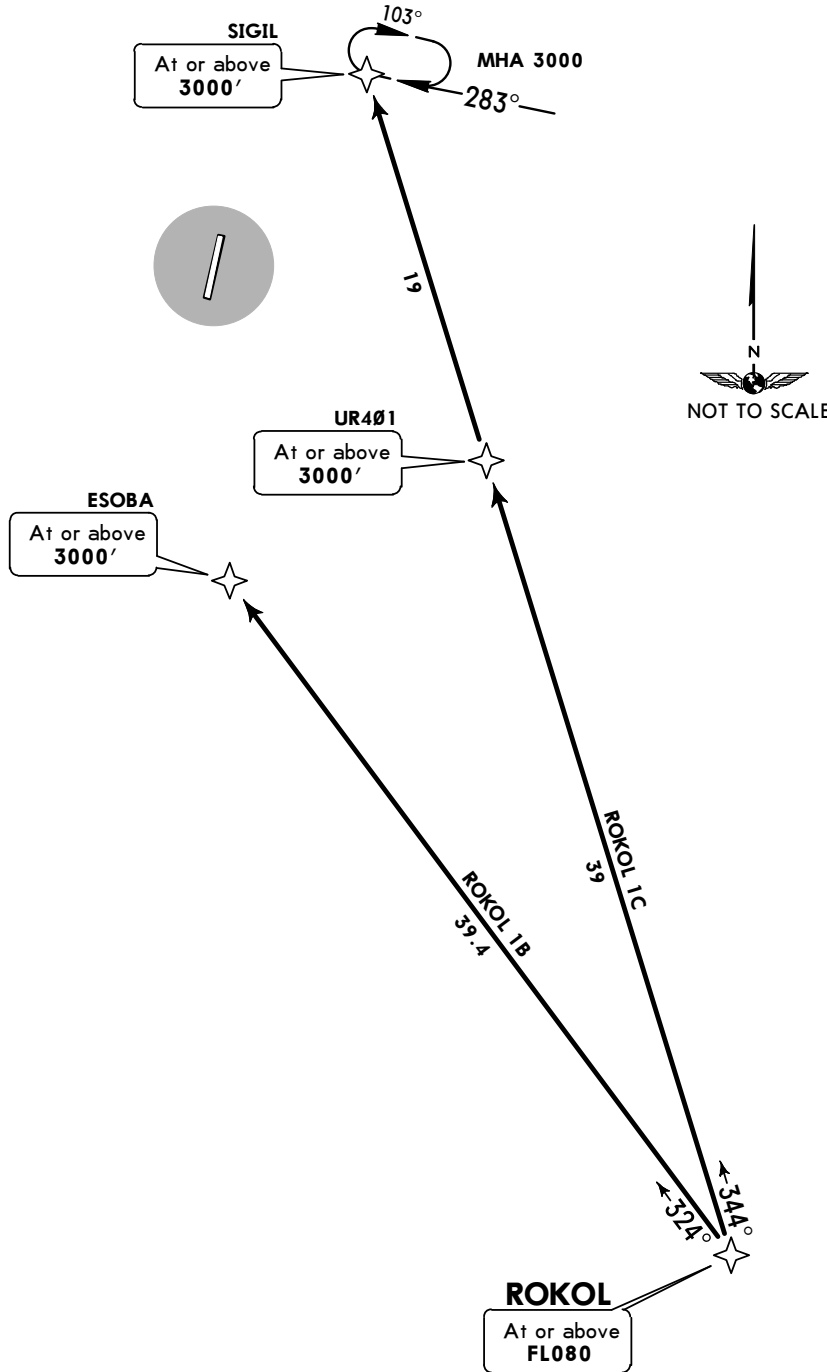
STAR	ROUTING
EGASI 1A	RWY 19: Descend on route V-2 via EGASI to cross D18.0 URA at or above FL080. Then continue to URA VOR according to ATC instructions.
PAGUR 1A	RWY 19: Descend on route G-675 to cross PAGUR at or above FL100, D19.0 URA at or above FL080. Then continue to URA VOR according to ATC instructions.
ROKOL 1	RWYS 01, 19: Descend on route V-1 via ROKOL to cross GEDAM at or above 3000' and proceed to URA VOR or according to procedure authorized by ATC.

Apt Elev  
116'

Alt Set: hPa Trans level: By ATC Trans alt: 3000'



**ROKOL 1B [ROK01B], ROKOL 1C [ROK01C]  
RNAV ARRIVALS**



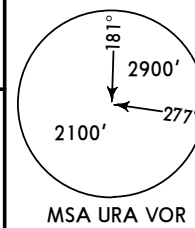
STAR	RWY	ROUTING
ROKOL 1B	01	After ROKOL, fly track 324° to ESOBA, at or above 3000'. Then according to ATC authorization.
ROKOL 1C	19	After ROKOL, fly track 344° to UR401, at or above 3000'. Then according to ATC authorization.

CHANGES: UR401 added to ROKOL 1C.

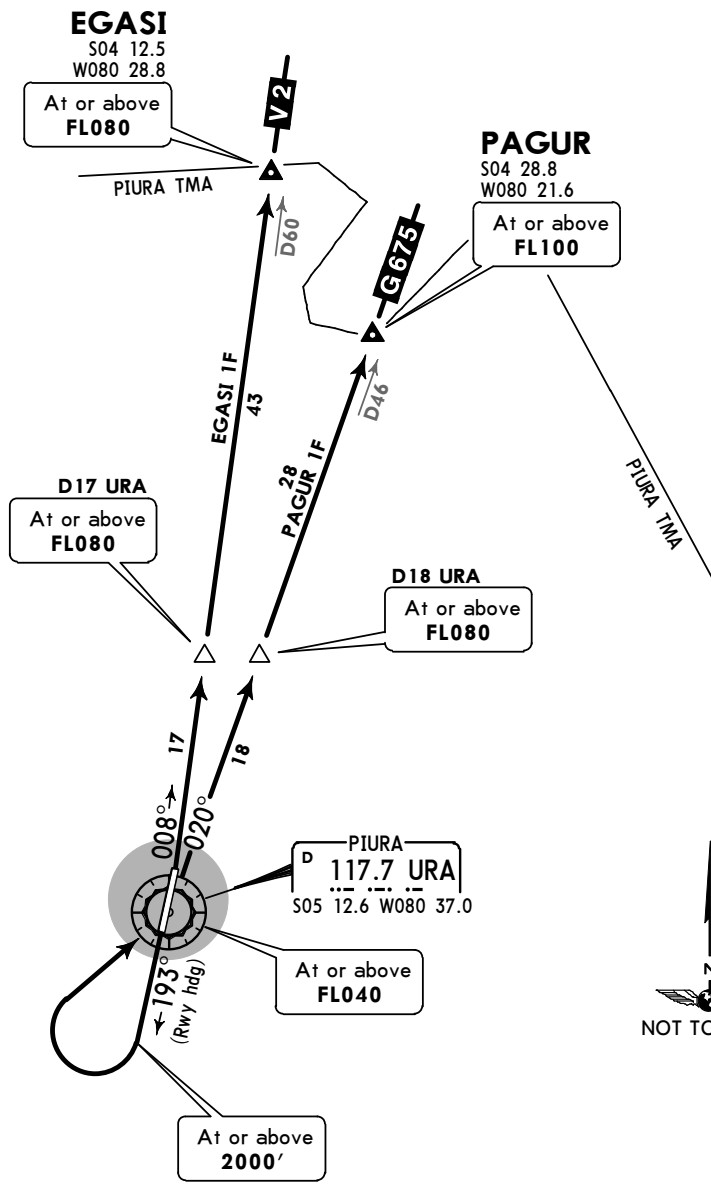
© JEPPESEN, 2010, 2017. ALL RIGHTS RESERVED.

Apt Elev  
116'

Trans level: By ATC Trans alt: 3000'



EGASI 1F [EGAS1F], PAGUR 1F [PAGU1F]  
DEPARTURES  
(RWY 19)



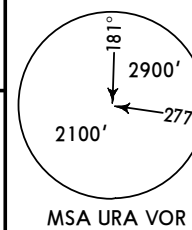
INITIAL CLIMB

Climb runway heading to 2000', turn RIGHT climbing to URA VOR.

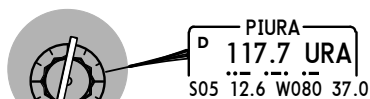
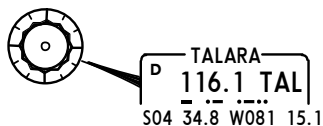
SID	ROUTING
EGASI 1F	At URA VOR climb on URA R-008 to D17 URA and continue to authorized flight level.
PAGUR 1F	At URA VOR climb on URA R-020 to D18 URA and continue to authorized flight level.

Apt Elev  
116'

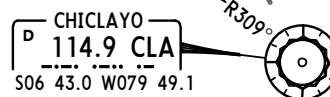
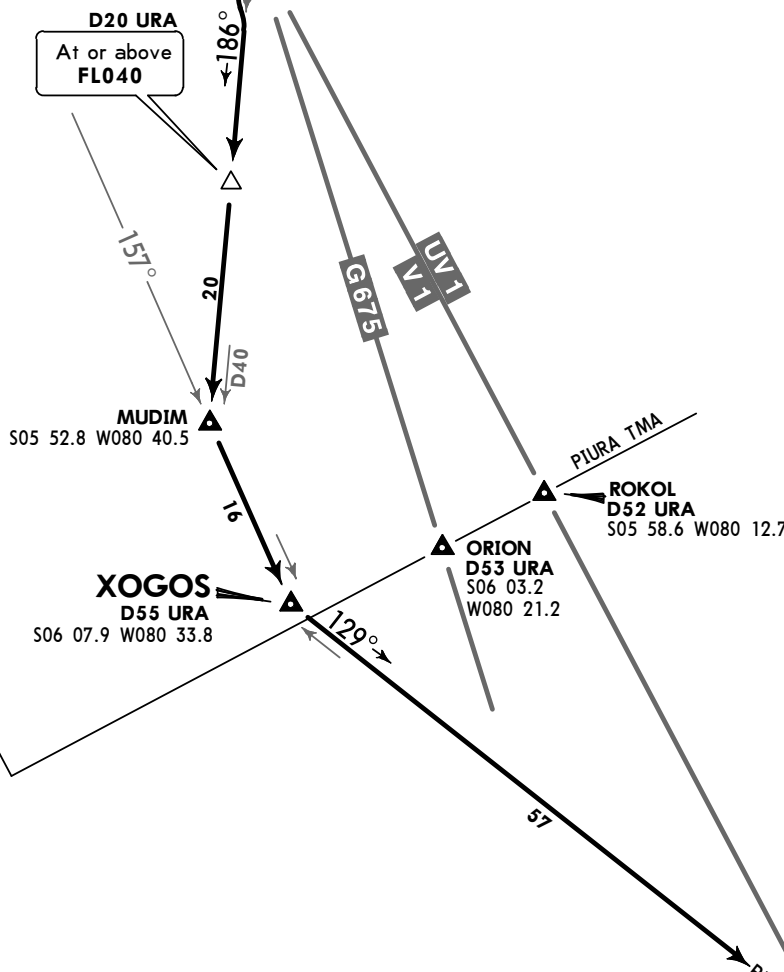
Trans level: By ATC Trans alt: 3000'



### XOGOS 1 DEPARTURE [XOGOS1] (RWY 19)

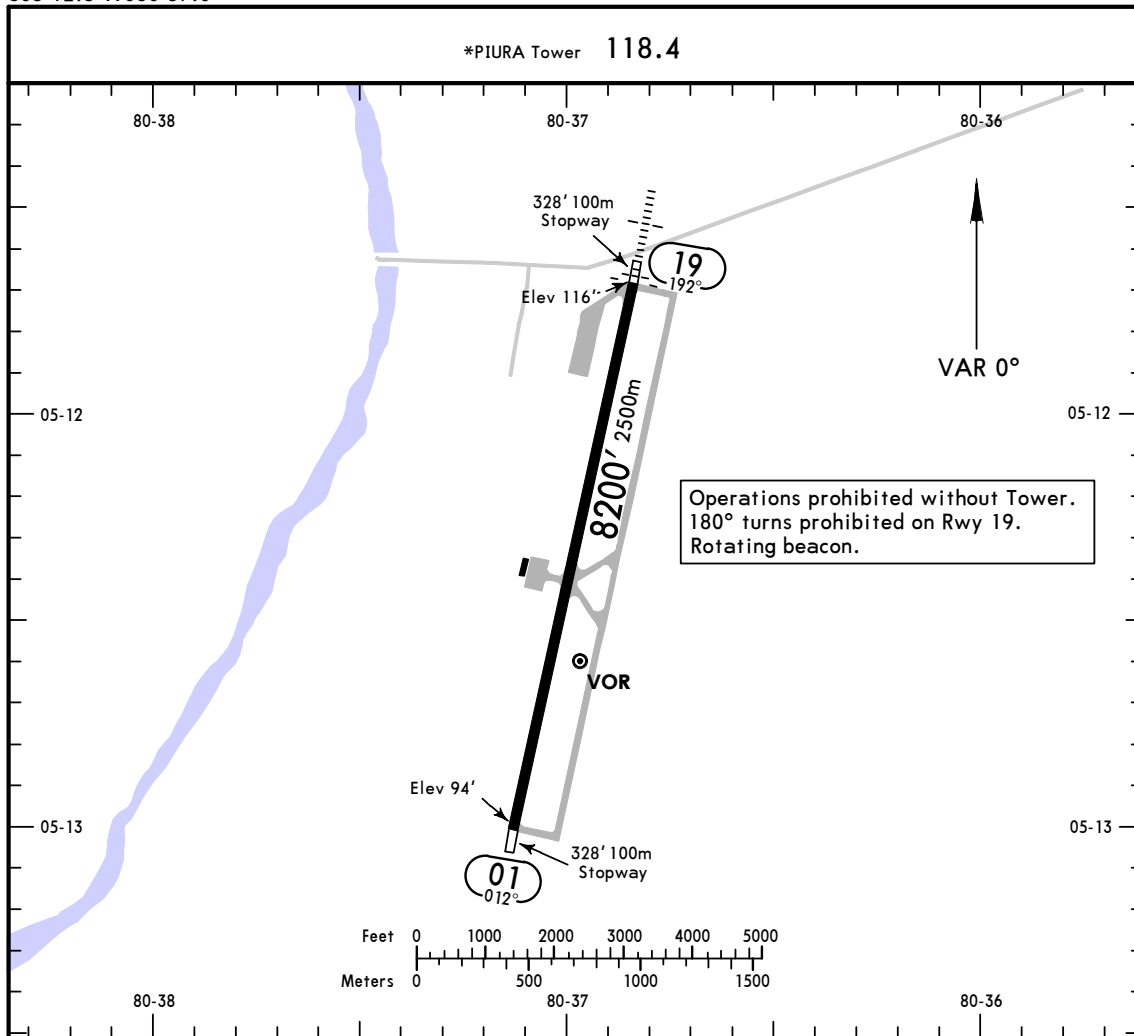


D20 URA  
At or above  
FL040



#### INITIAL CLIMB

Take-off runway 19 and intercept URA R-186 to D20 URA, then to MUDIM, turn LEFT to intercept TAL R-157 to XOGOS, and turn LEFT to CLA VOR climbing to authorized flight level.



ADDITIONAL RUNWAY INFORMATION

RWY	MIRL	PAPI (angle 3.0°)	USABLE LENGTHS		TAKE-OFF	WIDTH
			LANDING BEYOND Threshold	Glide Slope		
01	MIRL	PAPI (angle 3.0°)				148'
19	MIRL	SALS PAPI (angle 3.0°)				45m

TAKE-OFF

All Rwys

	Take-Off Alternate Apt. Filed	Take-Off Alternate Apt. Not Filed
1 Eng	1600m or Higher Available Landing Minimums	
2 Eng	1 hr alternate (1 Eng Inop) 1600m	Available Landing Minimums
3 or more Eng	2 hr alternate (1 Eng Inop) 800m	

SPUR/PIU  
CAPT GUILLERMO  
CONCHA IBERICO

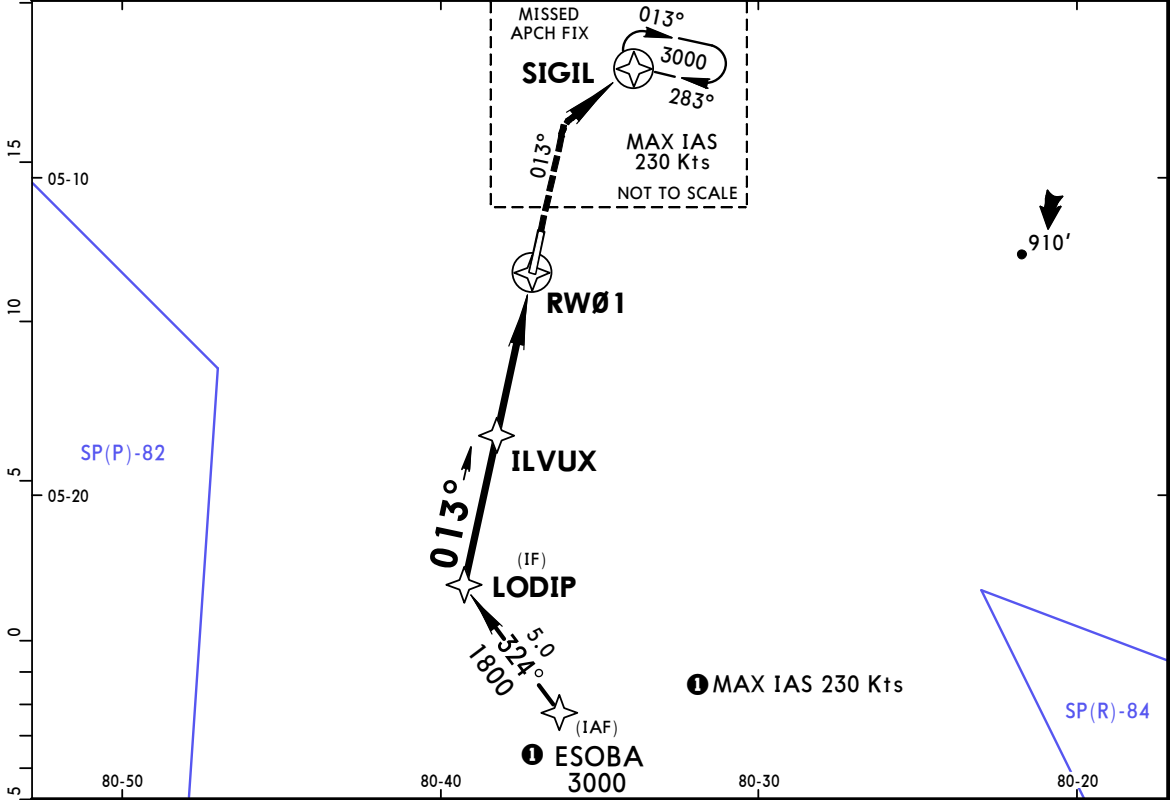


3 JUN 16 (12-1)

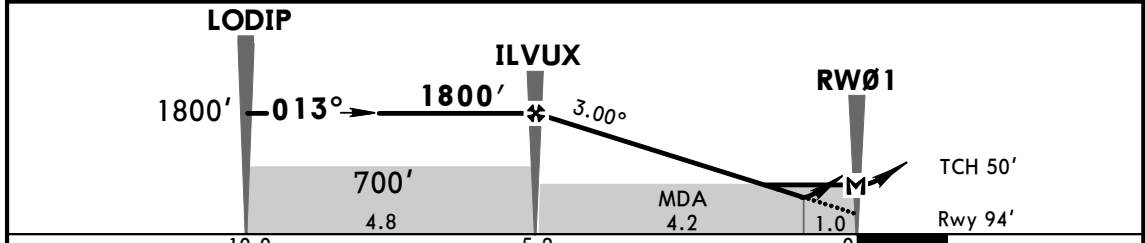
PIURA, PERU  
RNP Rwy 01  
(LNAV/VNAV, LNAV)

BRIEFING STRIP™

*PIURA Approach <b>118.4</b>			*PIURA Tower <b>118.4</b>		
RNAV	Final Apch Crs <b>013°</b>	Minimum Alt <b>ILVUX</b> 1800' (1706')	LNAV/VNAV DA(H) <b>450'</b> (356')	Apt Elev 116'	3000'
Rwy 94'					
<b>MISSED APCH: Climb to 1000' track 013°, turn RIGHT direct to SIGIL and hold, climbing to 3000'.</b>					MSA ARP
Alt Set: hPa Rwy Elev: 3 hPa Trans level: By ATC Trans alt: 3000'					
1. Baro-VNAV not authorized below 0°C (32°F), or when blast pads are raised.					



NM TO RW01	ILVUX	4.0	3.0	2.0	1.0
ALTITUDE	1800'	1420'	1100'	780'	460'



Gnd speed-Kts	70	90	100	120	140	160	PAPI	1000' on 013°
Descent Angle	3.00°	372	478	531	637	743		
MAP at RW01								

STRAIGHT-IN LANDING RWY 01			CIRCLE-TO-LAND		
LNAV/VNAV DA(H) <b>450'</b> (356')		LNAV MDA(H) <b>660'</b> (566')		Max Kts	
A				100	760' (644') - 2.8 km
B	1.2 km			135	
C		2.0 km		180	860' (744') - 4.6 km
D	1.6 km	2.8 km		205	

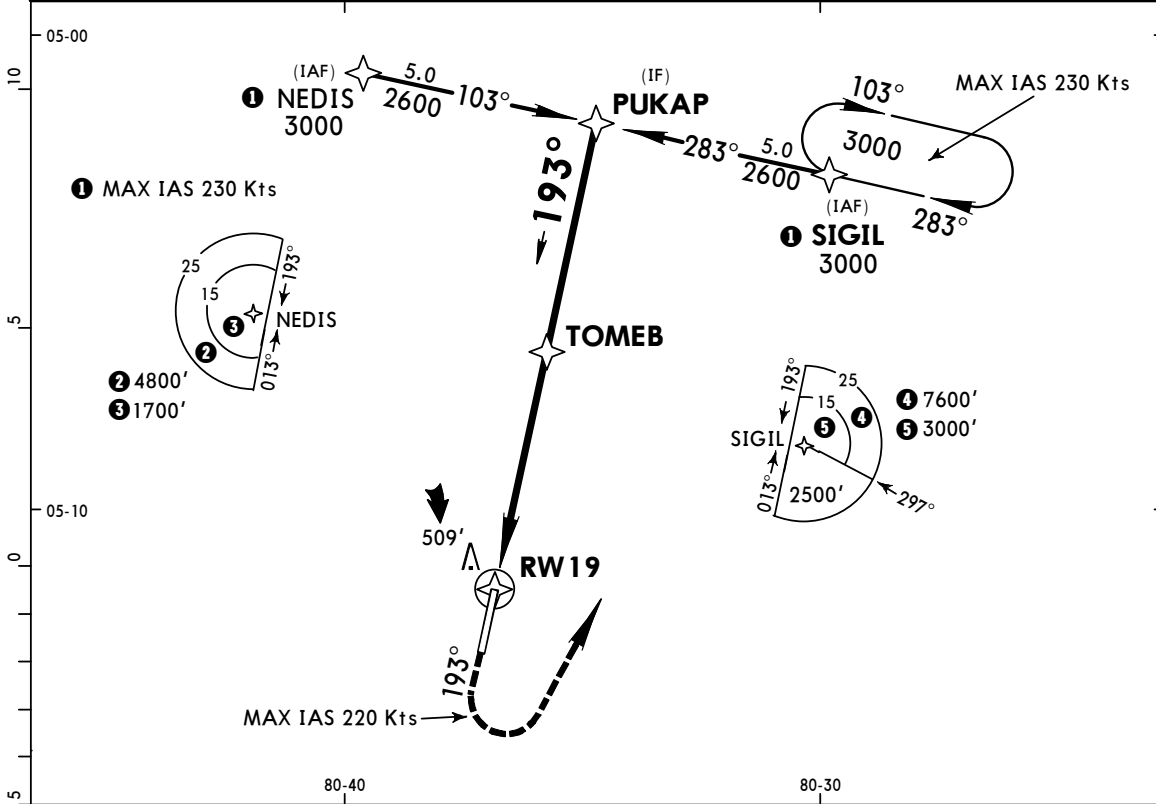
PANS OPS

CHANGES: Reindexed.

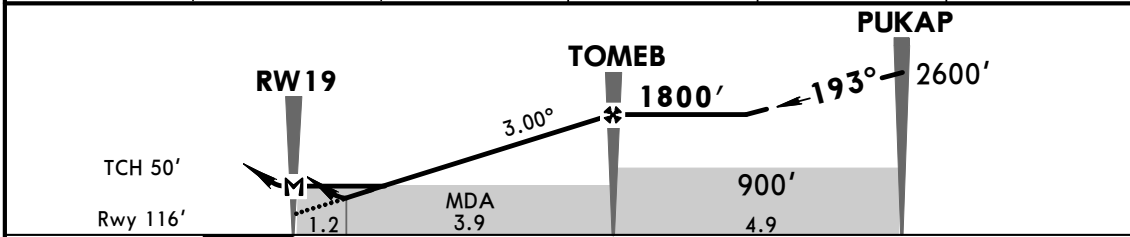
© JEPPESEN, 2010, 2016. ALL RIGHTS RESERVED.



*PIURA Approach <b>118.4</b>				*PIURA Tower <b>118.4</b>	
RNAV	Final Apch Crs <b>193°</b>	Minimum Alt <b>TOMEB</b> <b>1800'</b> (1684')	LNAV/VNAV DA(H) <b>540'</b> (424')	Apt Elev 116'	TAA 25 NM IAF
Rwy 116'					
<b>MISSED APCH:</b> Climb to 1000' track 193°, then turn LEFT direct to SIGIL hold, climbing to 3000'.					
Alt Set: hPa Rwy Elev: 4 hPa Trans level: By ATC Trans alt: 3000'					
1. Baro-VNAV not authorized below 0°C (32°F).					



NM TO RW19	1.0	2.0	3.0	4.0	TOMEB
ALTITUDE	490'	800'	1120'	1440'	1800'

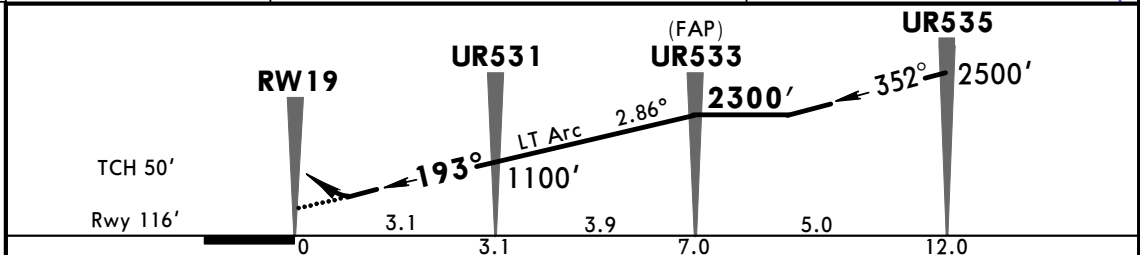
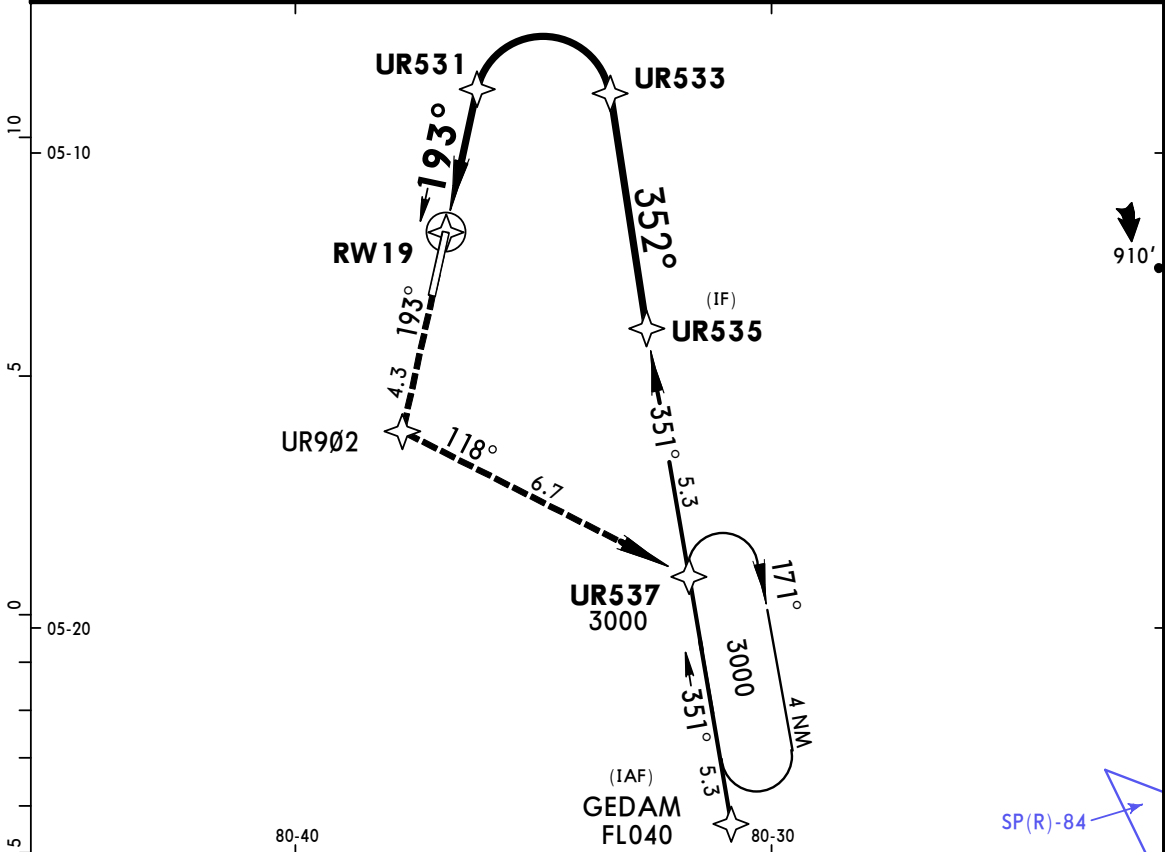


Gnd speed-Kts	70	90	100	120	140	160	PAPI SALS 1000' on 193°
Descent Angle 3.00°	372	478	531	637	743	849	
MAP at RW19							

STRAIGHT-IN LANDING RWY 19				CIRCLE-TO-LAND			
LNAV/VNAV DA(H) <b>540'</b> (424')		LNAV MDA(H) <b>550'</b> (434')		Max Kts. MDA(H)			
	ALS out		ALS out	100	760' (644') - 2.8 km		
A	1.6 km	1.6 km	1.6 km	135			
B	1.6 km		2.0 km	180	860' (744') - 4.6 km		
C		2.0 km	2.4 km	205			
D	2.0 km						

PANS OPS

*PIURA Approach <b>118.4</b>				*PIURA Tower <b>118.4</b>	
RNAV	Final Apch Crs <b>193°</b>	Minimum Alt <b>UR533</b> <b>2300'</b> (2184')	RNP 0.30 DA(H) <b>490'</b> (374')	Apt Elev 116'	3000'  MSA RW19
<b>MISSED APCH:</b> Climb to 3000' via the missed approach RNP track to UR537 and follow instructions from ATC.					
Alt Set: hPa    Rwy Elev: 4 hPa    Trans level: By ATC    Trans alt: 3000' <b>1. SPECIAL AIRCRAFT &amp; AIRCREW AUTHORIZATION REQUIRED. 2. RF required.</b> <b>3. For uncompensated Baro-VNAV systems, procedure not authorized below 10°C (50°F) or above 54°C (129°F).</b>					



Gnd speed-Kts	70	90	100	120	140	160	PAPI SALS	3000' ↑ via RNP track	UR537
Descent Angle	2.86°	354	455	506	607	708			
MAP at DA									

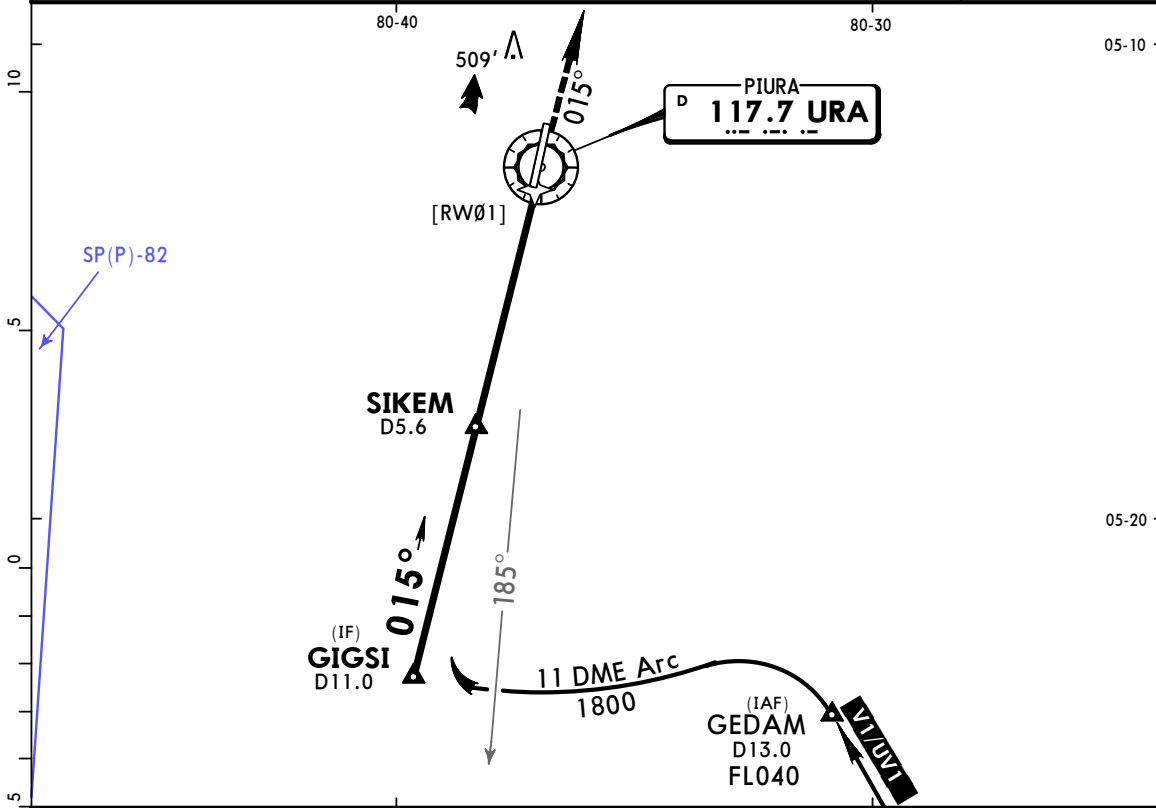
**1** STRAIGHT-IN LANDING RWY 19  
RNP 0.30  
DA(H) **490'** (374')

ALS out

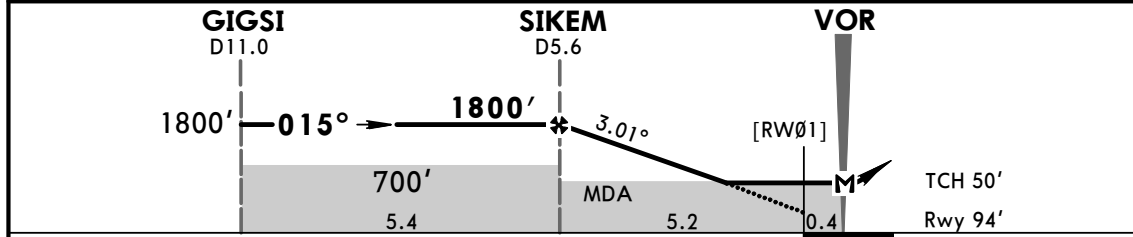
A	NOT APPLICABLE
B	NOT APPLICABLE
C	1600m
D	NOT APPLICABLE

**1** Circling not authorized.

*PIURA Approach <b>118.4</b>				*PIURA Tower <b>118.4</b>	
VOR URA <b>117.7</b>	Final Apch Crs <b>015°</b>	Minimum Alt (CONDITIONAL) Refer to Profile	MDA(H) <b>570'</b> (476')	Apt Elev 116'	Rwy 94'
<b>MISSED APCH:</b> Climb outbound on URA VOR R-015 to 1500', then proceed with ATC instructions.					
Alt Set: hPa		Rwy Elev: 3 hPa	Trans level: By ATC	Trans alt: 3000'	
<b>1. DME required.</b> 2. Max IAS for initial: 230 Kts.					MSA URA VOR



URA DME	KOLMI	4.0	3.0	2.0
ALTITUDE	1800'	1290'	970'	650'

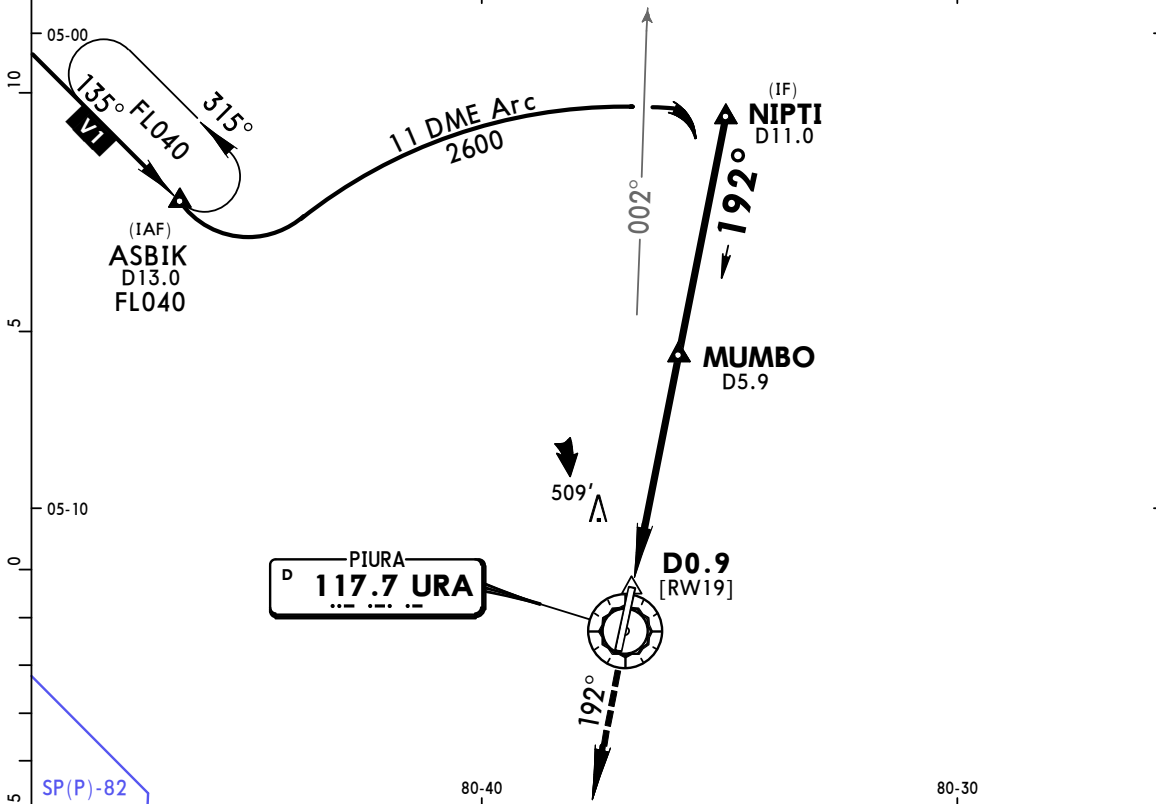


Gnd speed-Kts	70	90	100	120	140	160	PAPI	<b>1500'</b> ↑ URA on <b>117.7</b> <b>R-015</b>
Descent Angle	3.01°	373	479	532	639	745		
MAP at VOR								

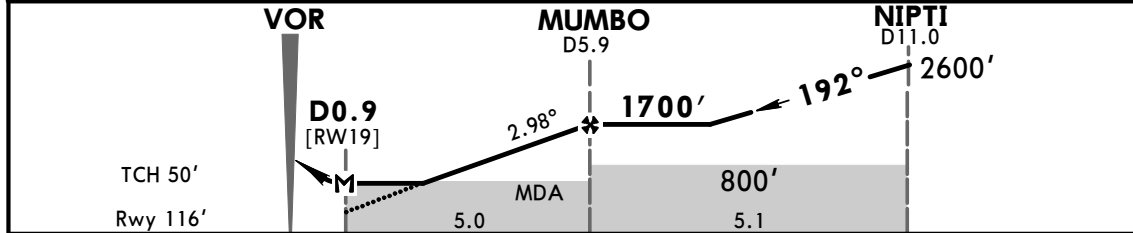
STRAIGHT-IN LANDING RWY 01				CIRCLE-TO-LAND			
MDA(H) <b>570'</b> (476')				MDA(H) _____			
A	2.4 km			Max Kts	760' (644') - 2.8 km		
B				100			
C	2.8 km			135			
D	3.6 km			180	860' (744') - 4.6 km		
				205			

PANS OPS

*PIURA Approach <b>118.4</b>				*PIURA Tower <b>118.4</b>	
VOR URA <b>117.7</b>	Final Apch Crs <b>192°</b>	Minimum Alt (CONDITIONAL) Refer to Profile	MDA(H) <b>620' (504')</b>	Apt Elev 116'	Rwy 116'
<b>MISSED APCH: Climb outbound on URA VOR R-192 to 2000', then proceed with ATC instructions.</b>					
Alt Set: hPa		Rwy Elev: 4 hPa	Trans level: By ATC	Trans alt: 3000'	
<b>1. DME required. 2. Max IAS for initial and holding: 230 Kts</b>					
					MSA URA VOR



URA DME	3.0	4.0	MUMBO
ALTITUDE	830'	1150'	1700'

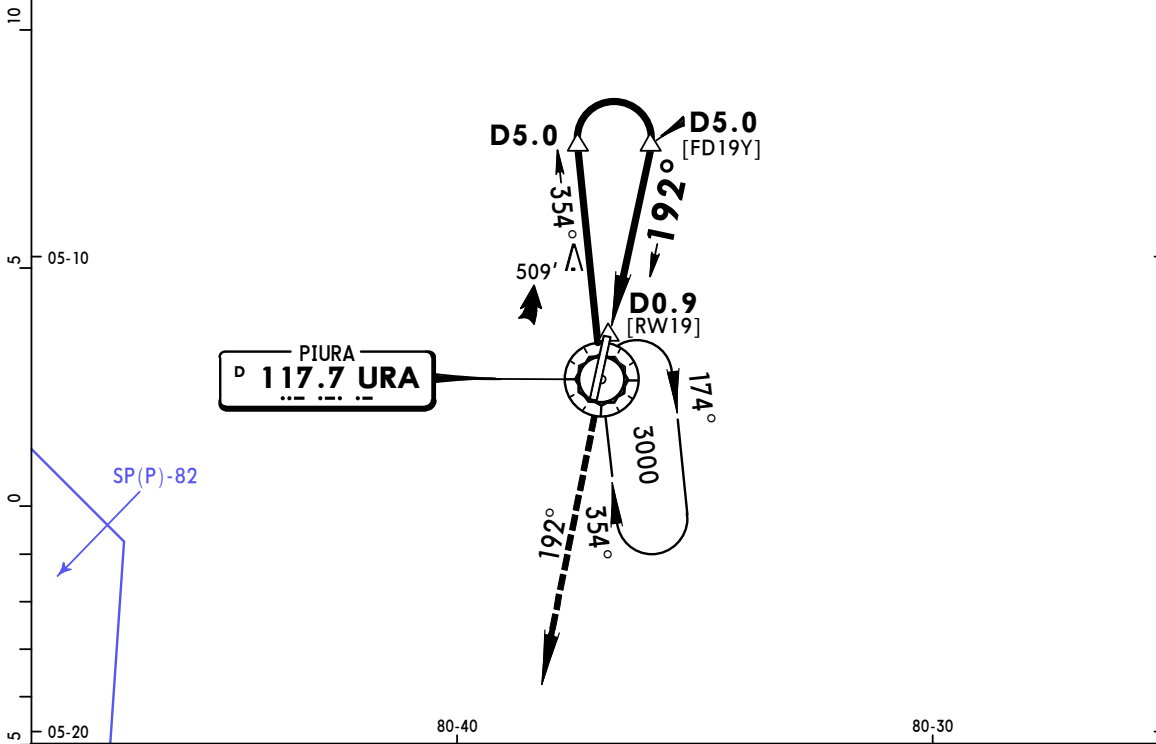


Gnd speed-Kts	70	90	100	120	140	160		
Descent Angle	2.98°	369	474	527	633	738		843
MAP at D0.9								

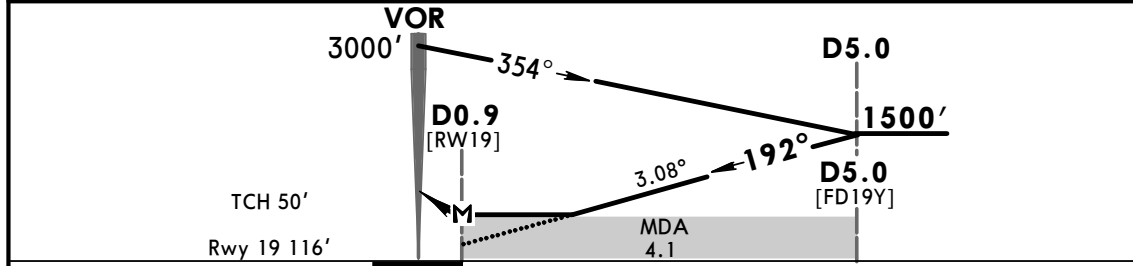
STRAIGHT-IN LANDING RWY 19				CIRCLE-TO-LAND			
MDA(H) <b>620' (504')</b>				MDA(H)			
		ALS out		Max Kts			
A	1.6 km	2.0 km	100	760' (644') - 2.8 km			
B			135				
C	2.0 km	2.4 km	180	860' (744') - 4.6 km			
D	2.8 km	3.2 km	205				

PANS OPS

*PIURA Approach <b>118.4</b>				*PIURA Tower <b>118.4</b>	
VOR URA <b>117.7</b>	Final Apch Crs <b>192°</b>	Minimum Alt <b>D5.0</b> 1500' (1384')	MDA(H) <b>640'</b> (524')	Apt Elev 116'	<p>MSA URA VOR</p>
<b>MISSED APCH: Climb outbound on URA VOR R-192 to 2000', then proceed with ATC instructions.</b>					
Alt Set: hPa	Rwy Elev: 4 hPa	Trans level: By ATC	Trans alt: 3000'		



URA DME	3.0	4.0
ALTITUDE	830'	1150'

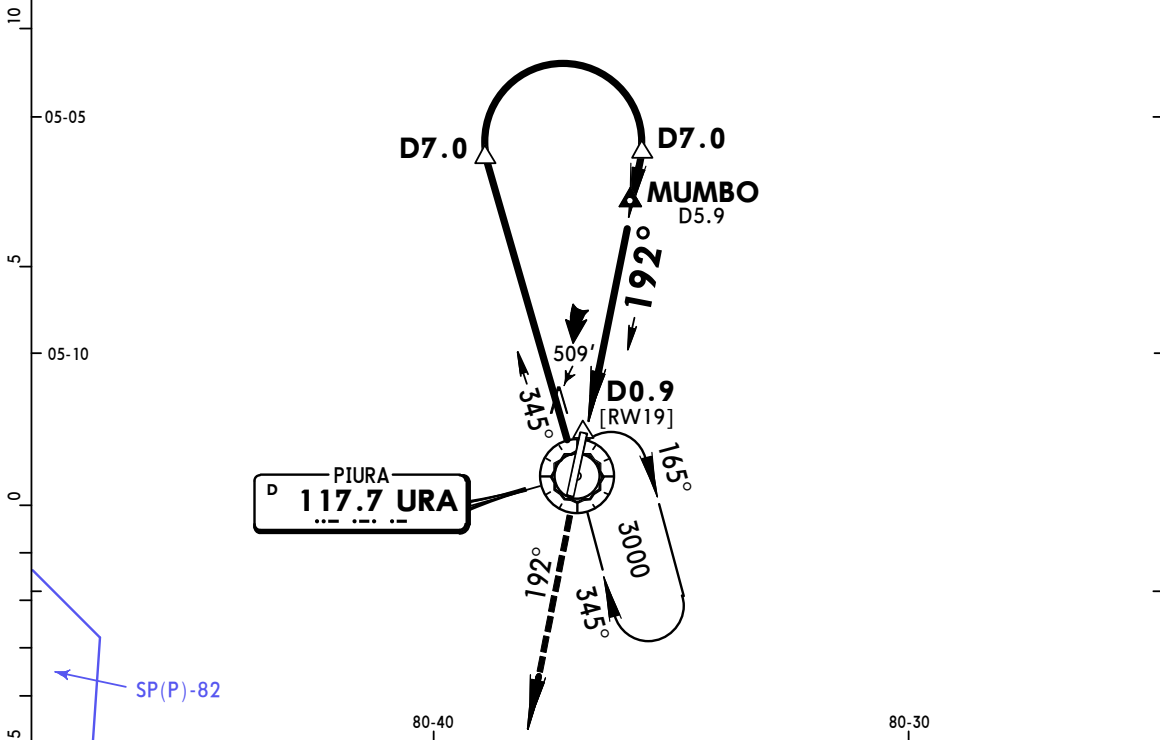


Gnd speed-Kts	70	90	100	120	140	160	
Descent Angle	3.08°	381	490	545	654	872	
MAP at D0.9							

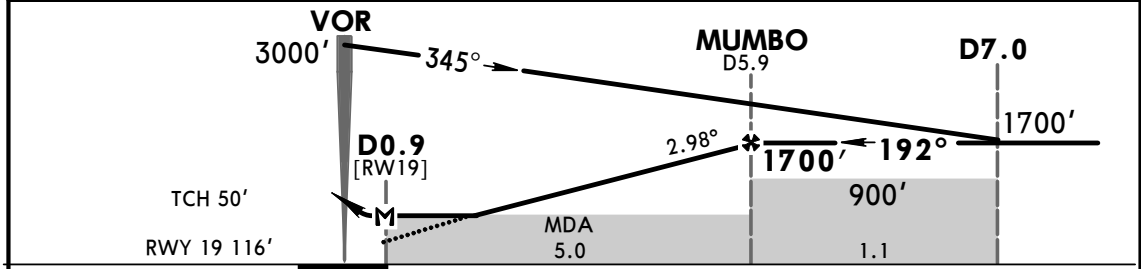
STRAIGHT-IN LANDING RWY 19			CIRCLE-TO-LAND	
MDA(H) <b>640'</b> (524')			MDA(H)	
ALS out			Max Kts	
A	1.6 km	2.0 km	100	760' (644') - 2.8 km
B			135	

PANS OPS

*PIURA Approach <b>118.4</b>				*PIURA Tower <b>118.4</b>	
VOR URA <b>117.7</b>	Final Apch Crs <b>192°</b>	Minimum Alt (CONDITIONAL) Refer to Profile	MDA(H) <b>620' (504')</b>	Apt Elev 116' Rwy 19 116'	
<b>MISSED APCH:</b> Climb outbound on URA VOR R-192 to 2000', then proceed with ATC instructions.					
Alt Set: hPa		Rwy Elev: 4 hPa	Trans level: By ATC	Trans alt: 3000'	
<b>1. DME required.</b> <b>2. Max IAS for holding: 230 Kts.</b>					



URA DME	3.0	4.0	MUMBO
ALTITUDE	830'	1150'	1700'



Gnd speed-Kts	70	90	100	120	140	160	PAPI SALS	2000' ↑ URA on 117.7 R-192	
Descent Angle	2.98°	369	474	527	633	738			843
MAP at D0.9									

STRAIGHT-IN LANDING RWY 19				CIRCLE-TO-LAND	
MDA(H) <b>620' (504')</b>					
	ALS out		Max Kts	MDA(H)	
C	2.0 km	2.4 km	180	860' (744') - 4.6 km	
D	2.8 km	3.2 km	205		