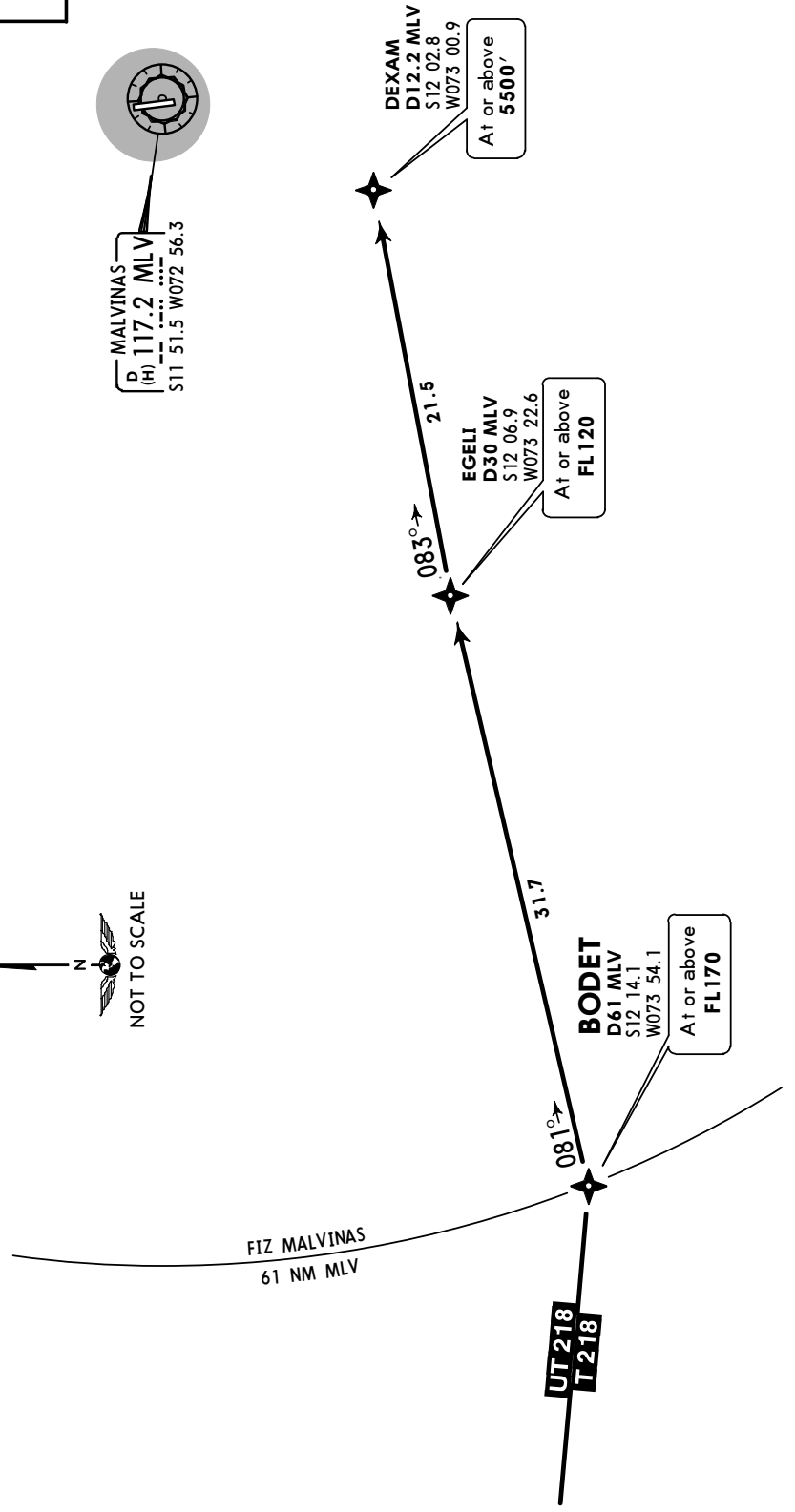
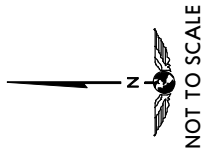
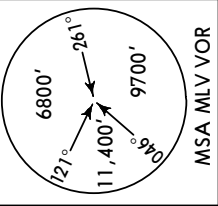


Apt Elev 1253'
Alt Set: hPa
Trans level: By ATC
GNSS required.
Trans alt: 10000'

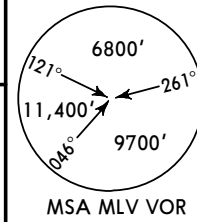
BODET 2 [BODET2] RNAV ARRIVAL
(RWY 35)



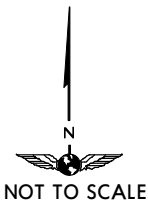
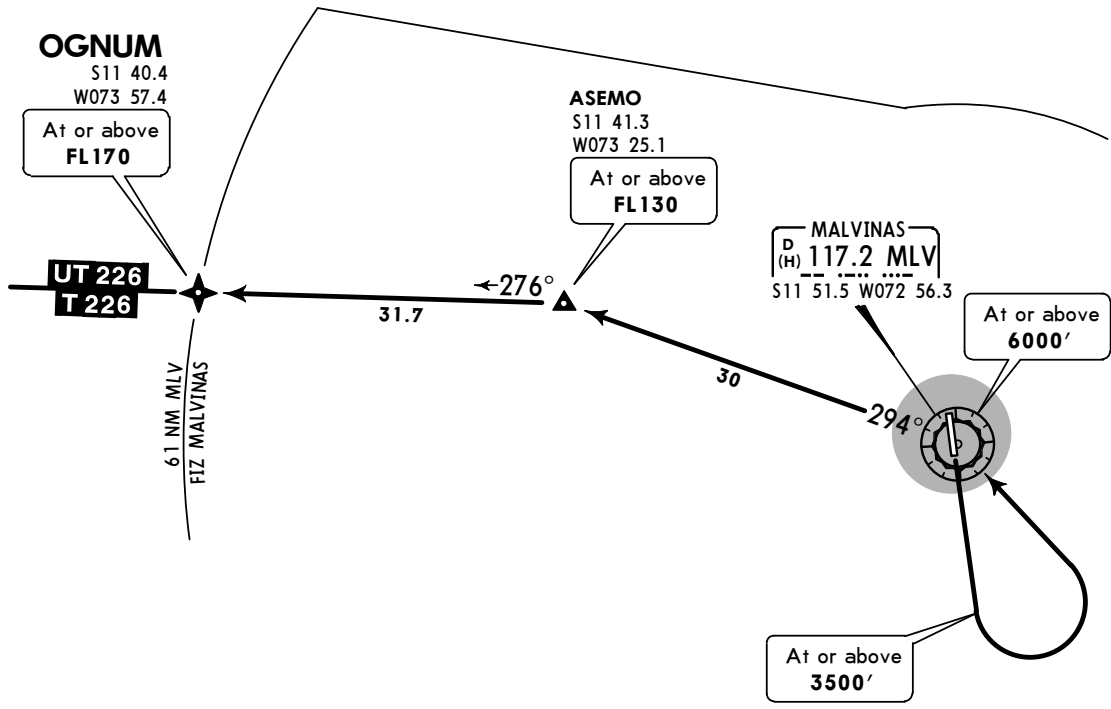
ROUTING
From UT-218/T-218 cross BODET, then turn LEFT to EGELI, continue to DEXAM. Continue in accordance with Malvinas AFIS.

Apt Elev
1253'

Trans level: By ATC Trans alt: 10000'
GNSS required.



OGNUM 1 DEPARTURE [OGNUM1]
(RWY 17)



INITIAL CLIMB

Climb on runway heading to at or above 3500'. Turn LEFT to MLV. At MLV continue on MLV R-294 to ASEMO, then continue on a 276° heading to OGNUM. Then continue climbing on airway UT-226/T-226.

SPWT



MISSED APCH CLIMB GRADIENT MIM 3.0%

LAS MALVINAS, PERU

LAS MALVINAS

6 NOV 15

11-1

Eff 12 Nov

CAT A, B & C

ILS Rwy 35

MALVINAS Radio (FIS)

MALVINAS Information (AFIS)

123.5

121.9

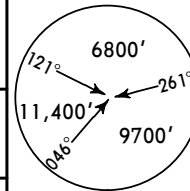
LOC IMLV
109.7

Final Apch Crs
357°

Minimum Alt
EKESI
2900' (1647')

ILS DA(H)
Refer to Minimums

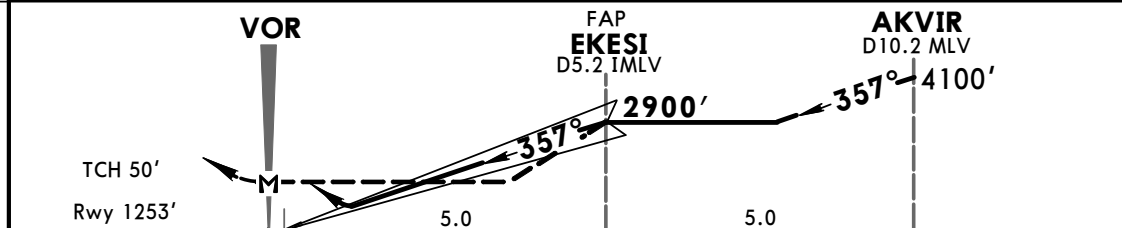
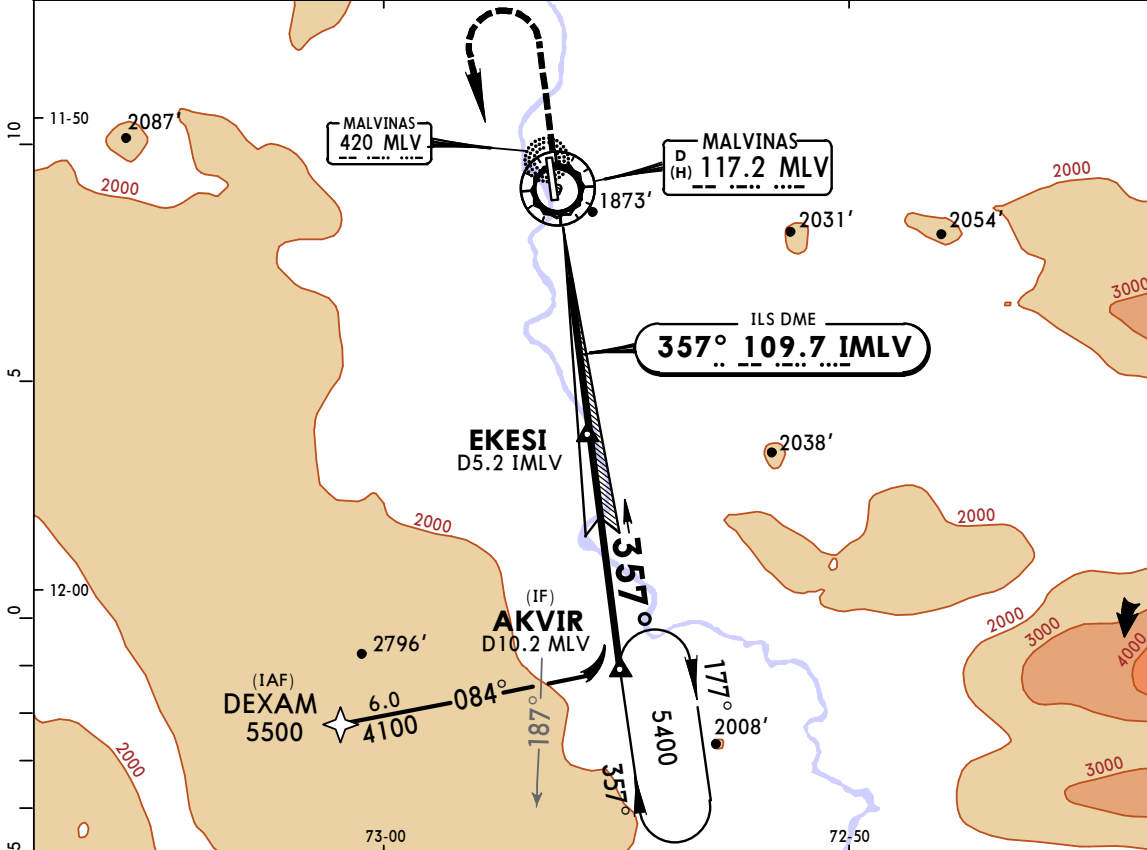
Apt Elev 1253'
Rwy 1253'



MISSED APCH: Climb on Rwy heading to 3000', then climbing LEFT turn to 5400' proceed to AKVIR. Inform ATC of intentions.

Alt Set: hPa Rwy Elev: 45 hPa Trans level: By ATC Trans Alt: 10000'
1. DME required. 2. IMLV DME required. 3. GNSS required on initial segment.

MSA MLV VOR



Gnd speed-Kts	70	90	100	120	140	160	SALS APAPI	3000'	Rwy hdg	5400'	AKVIR
GS	3.00°	372	478	531	637	849					
MAP at VOR											

STRAIGHT-IN LANDING RWY 35 Missed Apch Climb Gradient Mim 3.0%			
ILS A: 1700' (447') DA(H) B, C: 1670' (417')		LOC (GS out) MDA(H) 2120' (867')	
ALS out		ALS out	
A			
B	2000m	2400m	2000m
C			4000m
D	NOT APPLICABLE		NOT APPLICABLE

CHANGES: Procedure bearings, MSA, EKESI waypoint.

© JEPPESEN, 2014, 2015. ALL RIGHTS RESERVED.

SPWT

JEPPESEN

LAS MALVINAS, PERU

LAS MALVINAS

6 NOV 15
Eff 12 Nov

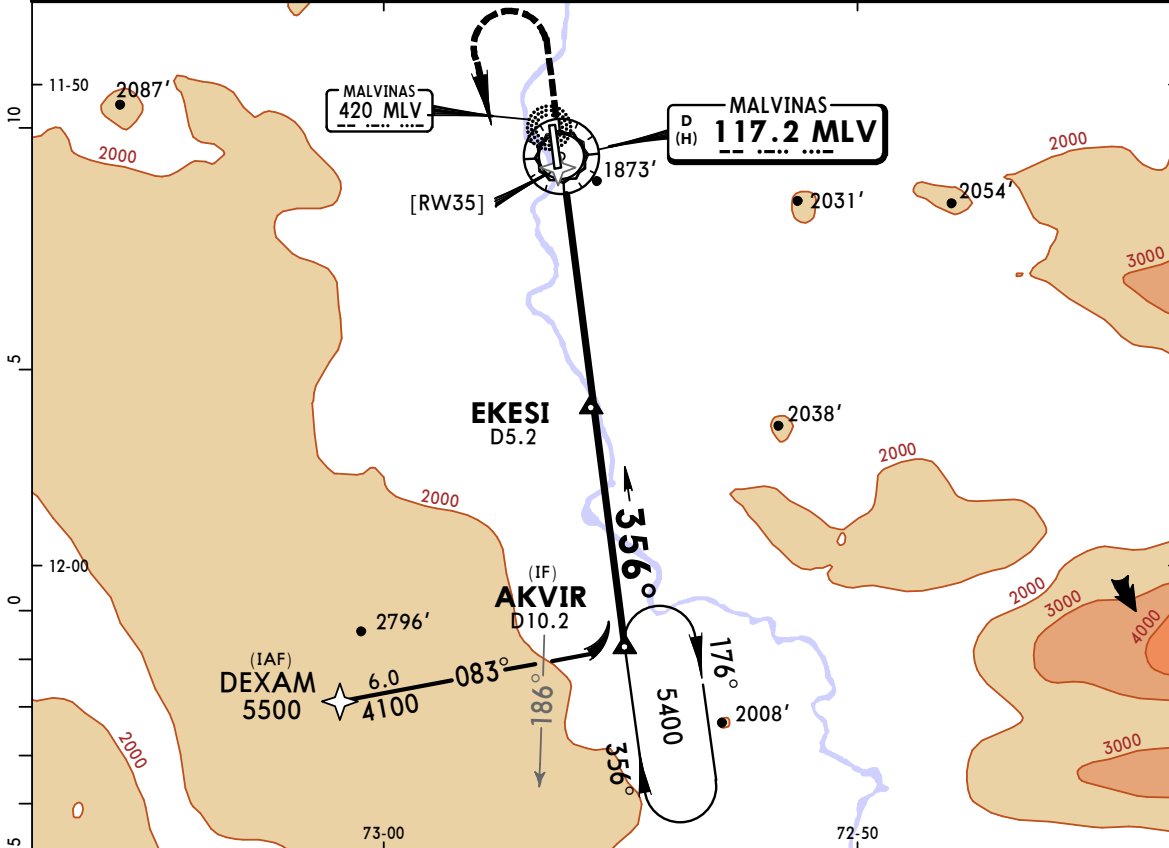
(13-1)

CAT A, B & C

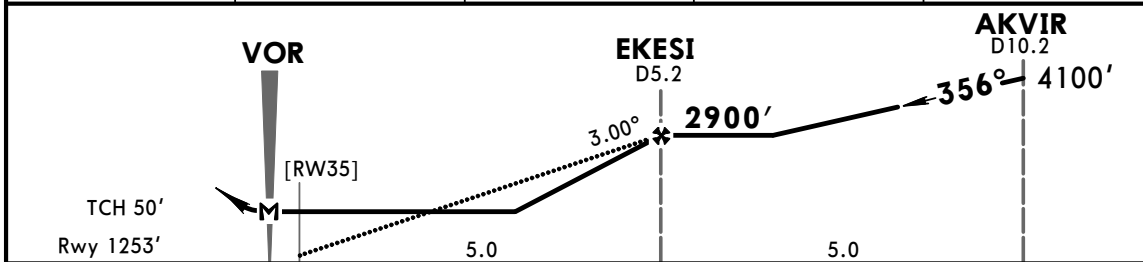
VOR Rwy 35

BRIEFING STRIP™

MALVINAS Radio (FIS) 123.5			MALVINAS Information (AFIS) 121.9		
VOR MLV 117.2	Final Apch Crs 356°	Minimum Alt EKESI 2900' (1647')	MDA(H) 2130' (877')	Apt Elev 1253'	
				Rwy 1253'	
MISSED APCH: Climb on Rwy heading to 3000', then turn LEFT and proceed to AKVIR with ATC instructions.					MSA MLV VOR
Alt Set: hPa		Rwy Elev: 45 hPa	Trans level: By ATC	Trans Alt: 10000'	
1. DME required. 2. GNSS required on initial segment.					



MLV DME	2.0	3.0	4.0	5.0
ALTITUDE	1870'	2190'	2510'	2830'



Gnd speed-Kts	70	90	100	120	140	160		3000' on Rwy hdg ↑		AKVIR
Descent Angle 3.00°	372	478	531	637	743	849				
MAP at VOR										

STRAIGHT-IN LANDING RWY 35				CIRCLE-TO-LAND			
MDA(H) 2130' (877')				Max Kts			
A	2000m			A	NOT PERMITTED		
B				B			
C	4000m			C			
D	NA			D			

PANS OPS

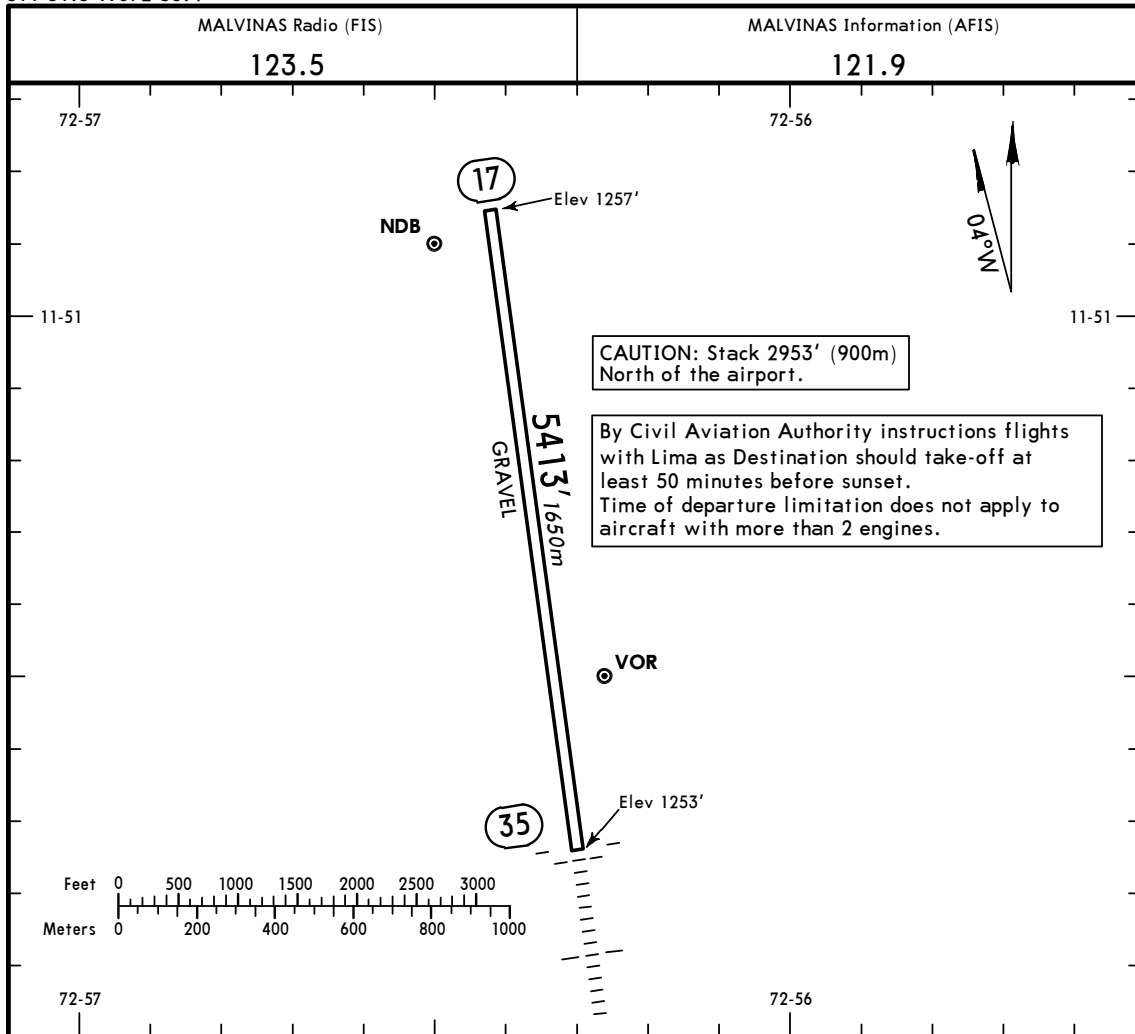
CHANGES: Procedure name, EKESI wpt, MSA.

© JEPPESEN, 2010, 2015. ALL RIGHTS RESERVED.

SPWT
 Apt Elev **1253'**
 S11 51.3 W072 56.4

JEPPESEN
 6 NOV 15 **(11-1)** **Eff 12 Nov**

LAS MALVINAS, PERU
LAS MALVINAS



ADDITIONAL RUNWAY INFORMATION

RWY		USABLE LENGTHS		TAKE-OFF	WIDTH
		LANDING	BEYOND		
		Threshold	Glide Slope		
17	RL				98'
35	RL SALS APAPI				30m

TAKE-OFF

	All Rwys	
	Take-Off Alternate Apt. Filed	Take-Off Alternate Apt. Not Filed
1 Eng	1600m or Higher Available Landing Minimums	
2 Eng	1 hr alternate (1 Eng Inop) 1600m	Available Landing Minimums
3 or more Eng	2 hr alternate (1 Eng Inop) 800m	