

Birds in vicinity of airport.
 Two-way radio required.
 In order to avoid damage to the asphalt layer, it is prohibited to make 180° turns on runway 17.
 Landing aircraft shall move to the end of the runway where they will make the turn to return to the intersection of the taxiways and then enter the apron.
 Aircraft should use minimum power to exit or maneuver on parking ramp.

ADDITIONAL RUNWAY INFORMATION

RWY	PAPI (angle 3.0°)	USABLE LENGTHS			WIDTH
		Threshold	Glide Slope	TAKE-OFF	
17 ① 35					148' 45m

① 150' shoulder each side of rwy.

TAKE-OFF

All Rwy's

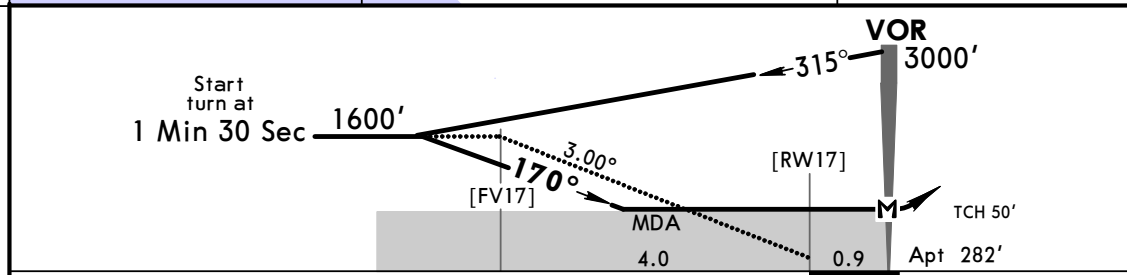
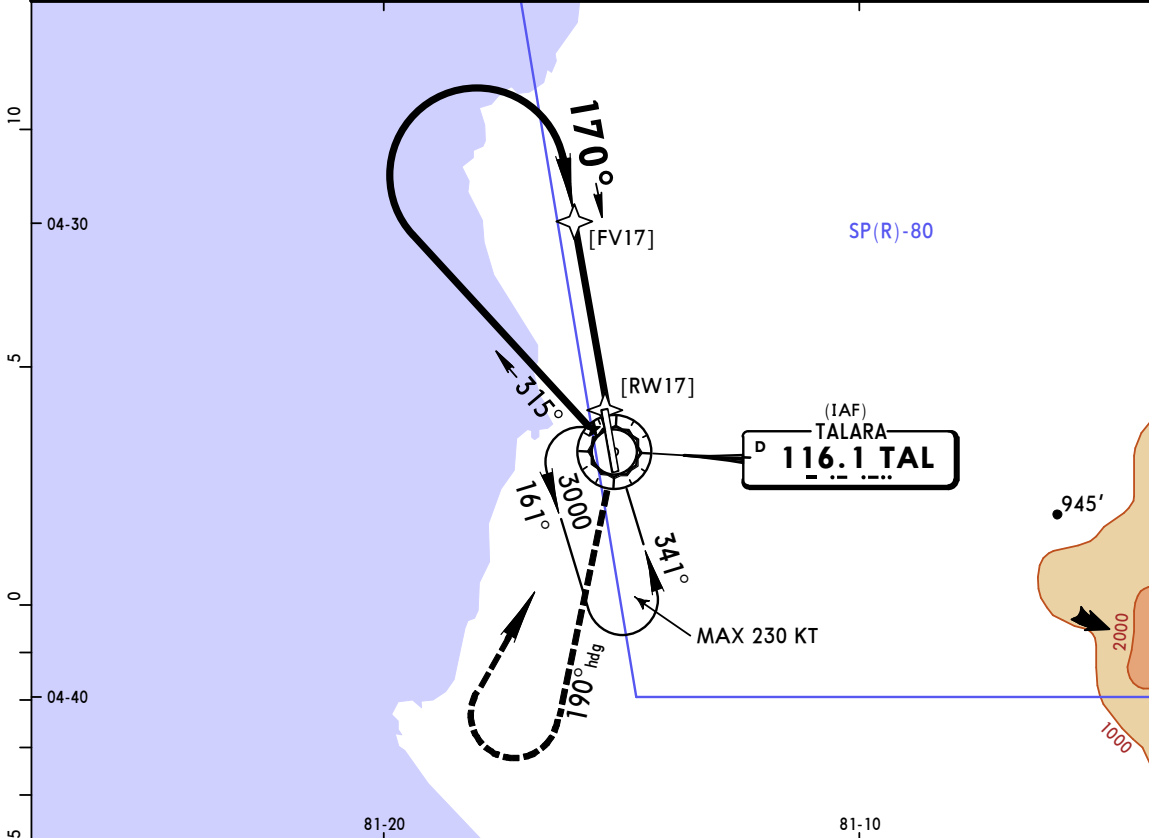
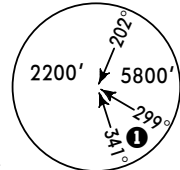
	Take-Off Alternate Apt. Filed	Take-Off Alternate Apt. Not Filed
1 Eng	1600m or Higher Available Landing Minimums	
2 Eng	1 hr alternate (1 Eng Inop) 1600m	Available Landing Minimums
3 or more Eng	2 hr alternate (1 Eng Inop) 800m	

SPYL/TYL
CAPITAN MONTES INTL

JEPPESEN
4 NOV 16 **(13-1)** Eff 10 Nov

TALARA, PERU
VOR Rwy 17
CAT C & D

BRIEFING STRIP™	*PIURA Approach 118.4		*PIURA Tower 118.4		*TALARA Radio (AFIS) 119.5	
	VOR TAL 116.1	Final Apch Crs 170°	No FAF	MDA(H) 780' (498')	Apt Elev 282'	
	MISSED APCH: Turn to heading 190° climbing to 2000', turn RIGHT to TAL VOR and hold.					
Alt Set: hPa Apt Elev: 10 hPa Trans level: By ATC Trans alt: 3000' 1. Final: MAX 185 KT, Circling: MAX 205 KT.						MSA TAL VOR 3900'



Gnd speed-Kts	70	90	100	120	140	160			
Descent angle	3.00°	372	478	531	637	743	849		
MAP at VOR									

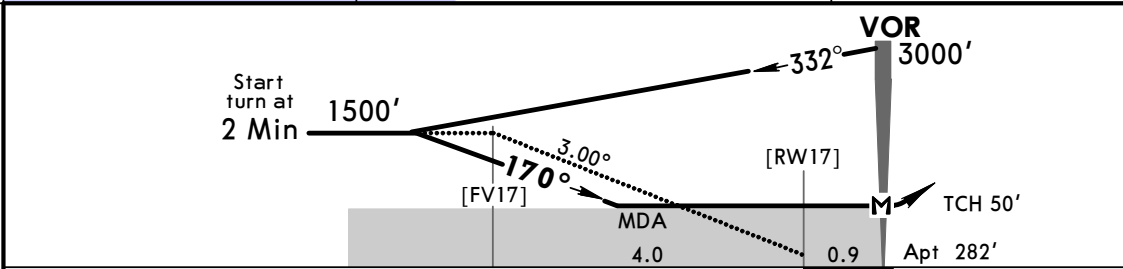
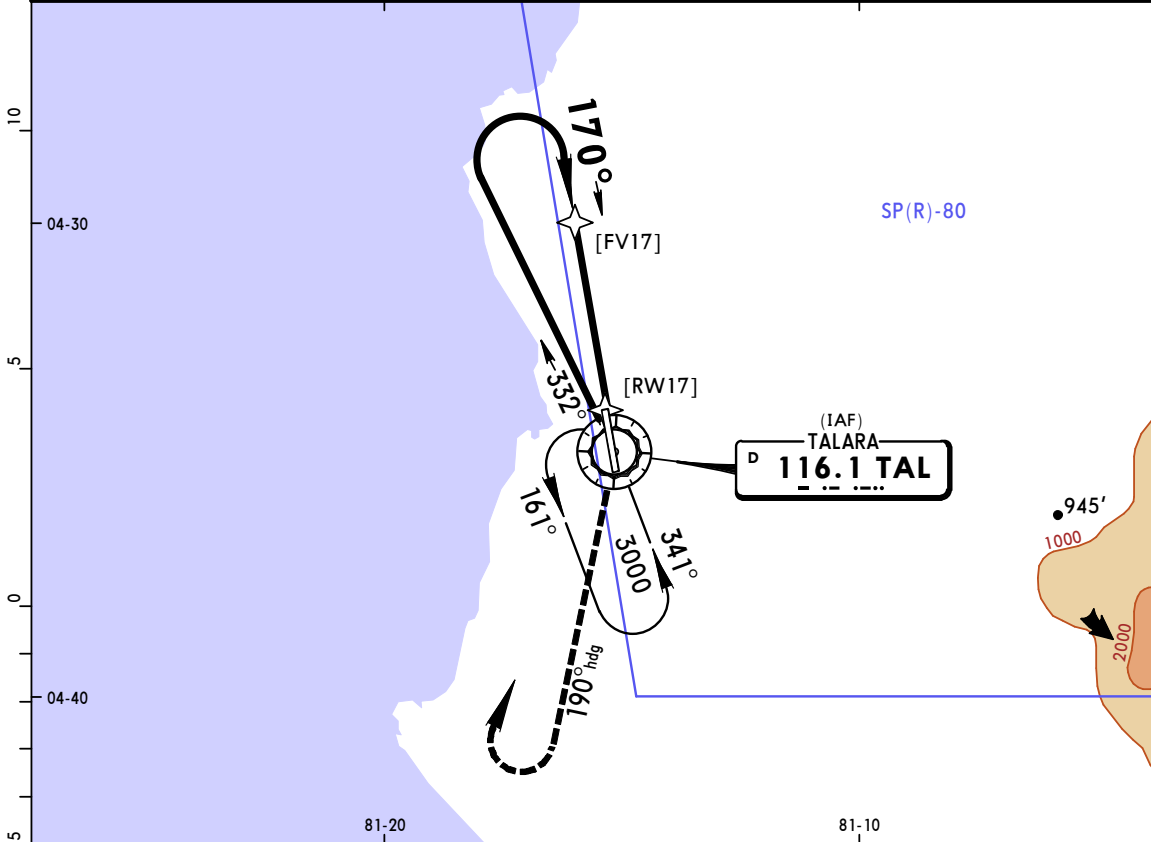
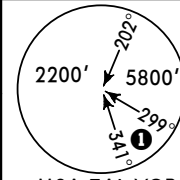
STRAIGHT-IN LANDING RWY17		CIRCLE-TO-LAND	
MDA(H) 780' (498')		Not Authorized East of Airport	
		Max Kts	MDA(H)
C	2.8 km	180	980' (698') - 3.6 km
D		205	

PANS OPS

CHANGES: Procedure.

© JEPPESEN, 2005, 2016. ALL RIGHTS RESERVED.

*PIURA Approach 118.4		*PIURA Tower 118.4		*TALARA Radio (AFIS) 119.5	
VOR TAL 116.1	Final Apch Crs 170°	No FAF	MDA(H) 780' (498')	Apt Elev 282'	
MISSED APCH: Turn to heading 190° climbing to 2000', turn RIGHT to TAL VOR and hold.					
Alt Set: hPa		Apt Elev: 10 hPa		Trans level: By ATC	
				Trans alt: 3000'	



Gnd speed-Kts	70	90	100	120	140	160			
Descent angle	3.00°	372	478	531	637	743	849		
MAP at VOR									

STRAIGHT-IN LANDING RWY17		CIRCLE-TO-LAND	
MDA(H) 780' (498')		Not Authorized East of Airport	
		MDA(H) _____	

PANS OPS	A	2.6 km	100	810' (528') - 2.6 km
	B		135	